

## **A survey of the uses of rental cycles at urban railway stations**

Policy Research Institute, MLIT Japan has conducted survey to find out how rental cycles are used for daily transport.

### **Study area:**

Four stations were picked up as survey area. Mikuni station and Nishinomiya-Kitaguchi station in Kansai area have ports of Hankyu Rental cycle equipped by Hankyu railways which is private railway own-and-operate company.

Kyodo station and Sakurajyosui station in Tokyo were also studied. Setagaya City which is most fundamental authority in Tokyo operates "Setagaya Community cycle" at these stations.

### **Results:**

#### **Who use rental cycles?**

Rental cycles surveyed in this study are mainly used for commuting. It is characteristic of rental cycle that many people use them for last 1 mile transport to their destination. 40%~70 %(differ from station which rental cycles are equipped) of rental cycle users utilize them as last 1 mile transport, while it is only a few percent among users of their own cycle.

Because of relatively reasonable fee, over 90% of rental cycle users are pay by the month. And it seems encourage frequent use of rental cycle. About 80% use it "daily", a little less than 20% use "3 or 4 times a week".

#### **Why use rental cycles?**

In this survey, respondents were asked the reason why they use rental cycles. Over 70% replied "convenient to use railways since cycle port are close to station". "Arrive their destination fast", "no need to maintain our own cycle", and "No need to find space to park their own cycles" are following that.

#### **What effects are brought by rental cycles?**

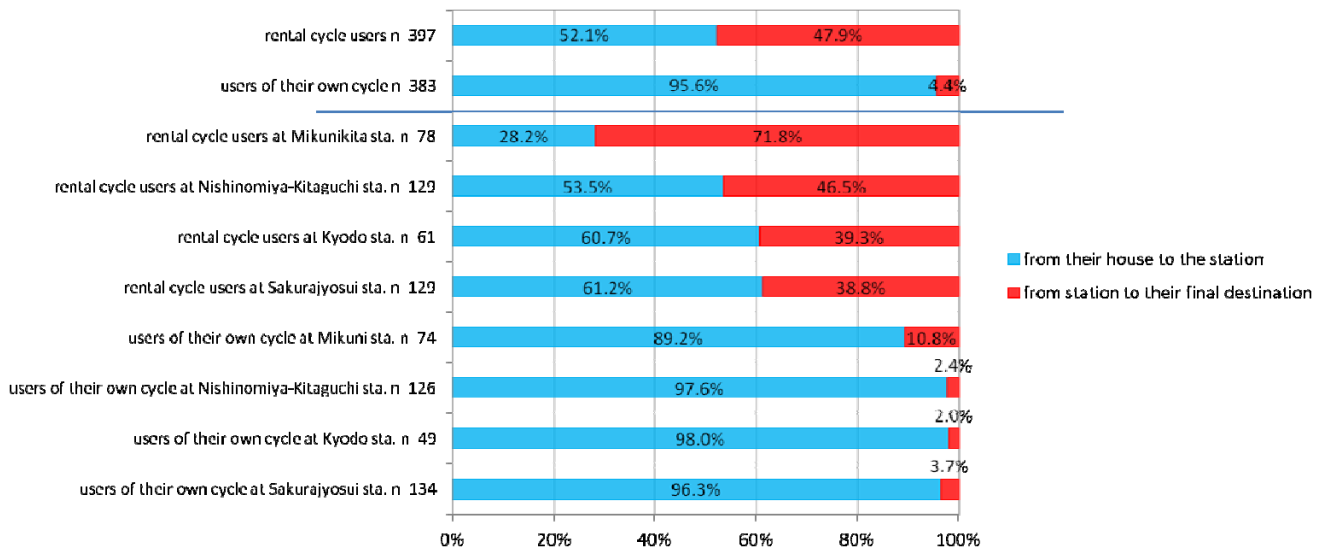
Improving transport to and from the stations effects on choice of station and transport mode. 10% of rental cycle users have transferred from other transport mode (walk, bus, private car etc.) to railways after they started to use rental cycles. And 20% of users who use railway both before and after using rental cycle changed the station they use.

More than 70% of rental cycle users feel they can move wider area by using rental cycle. 14% responded they started to use railway more frequently.

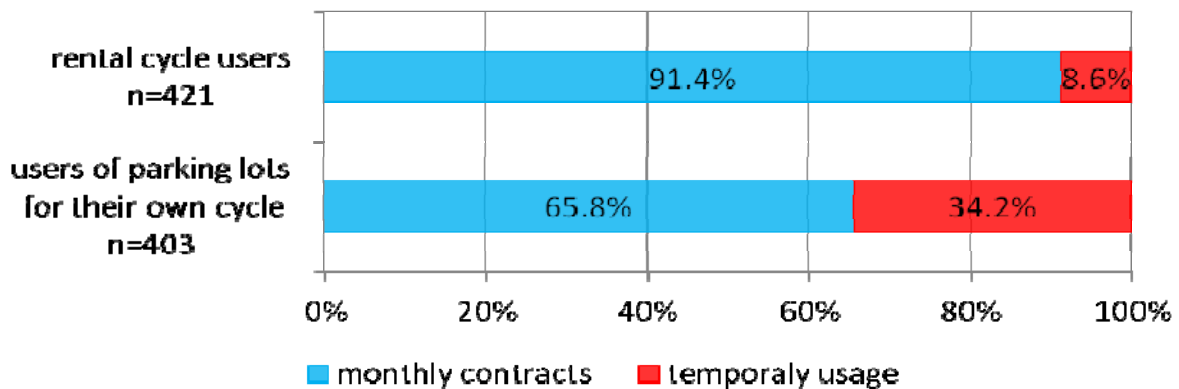
#### **What is the challenge?**

To increase usage of rental cycle, it is effective to offer information about rental cycle system. And it is also considered to be important to improve convenience by establishing more ports at stations and introducing IC card for registration.

**Fig.1. When do you use cycle ?**



**Fig.2. Do you use rental cycle or parking lot monthly or temporally?**



**Fig.3. How often do you use cycle in a week?**

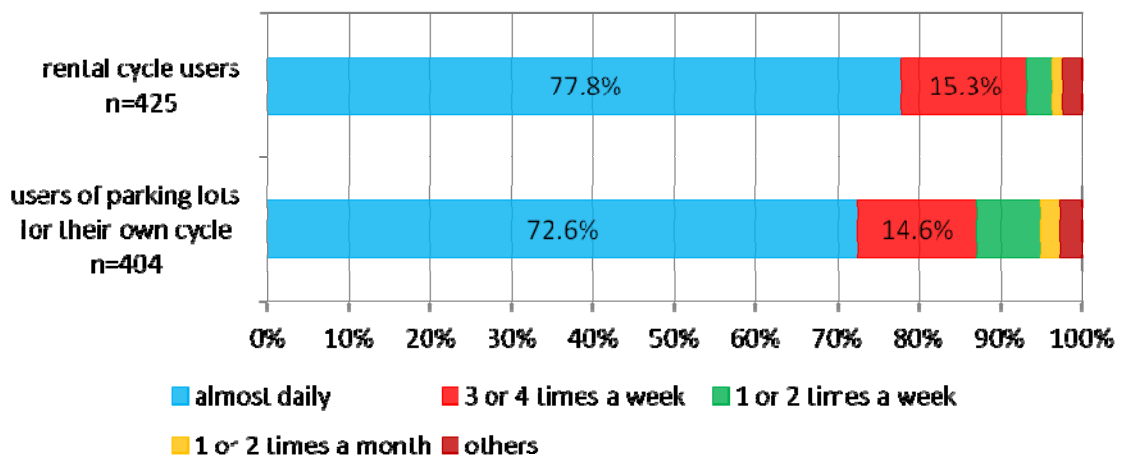
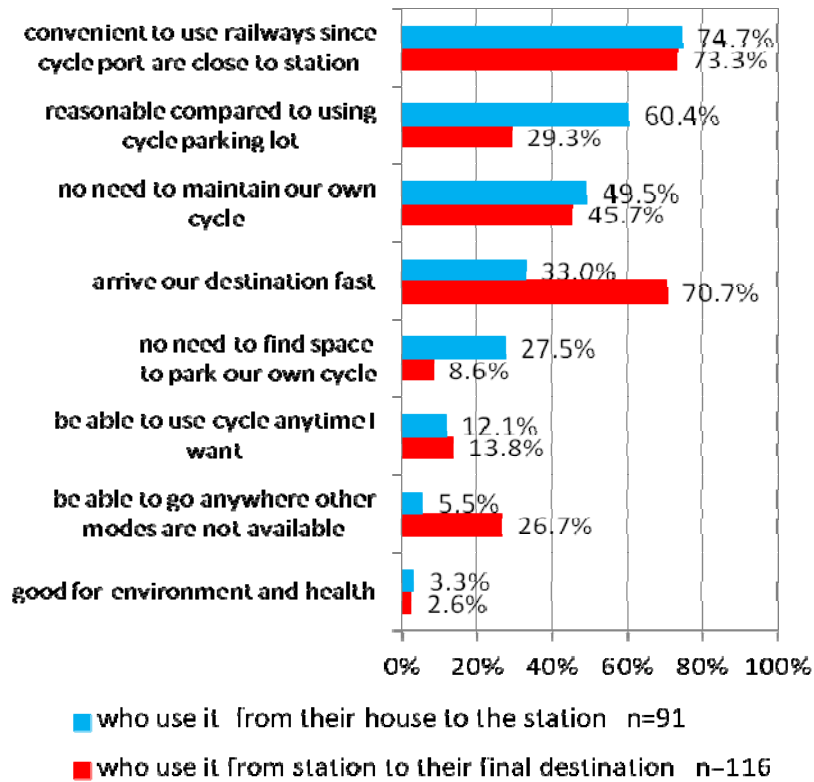


Fig.4. Why do you use rental cycle?

[Users of Hankyu Rental Cycle]



[Users of Setagaya Community Cycle]

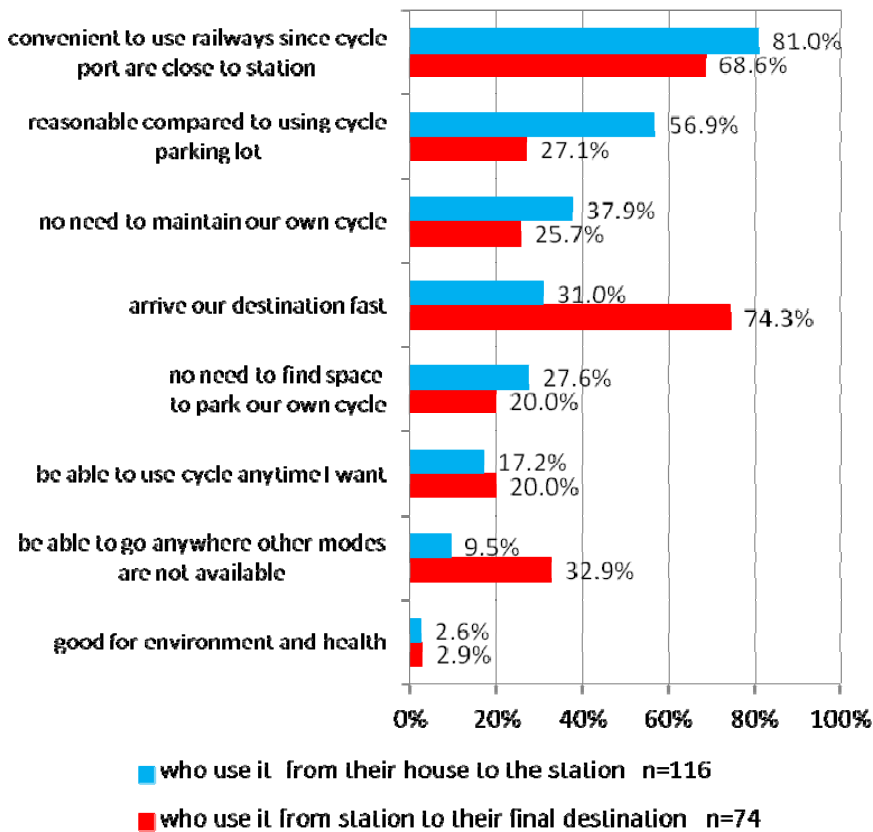


Fig.5. How have you been move to the station before starting to use rental cycle?

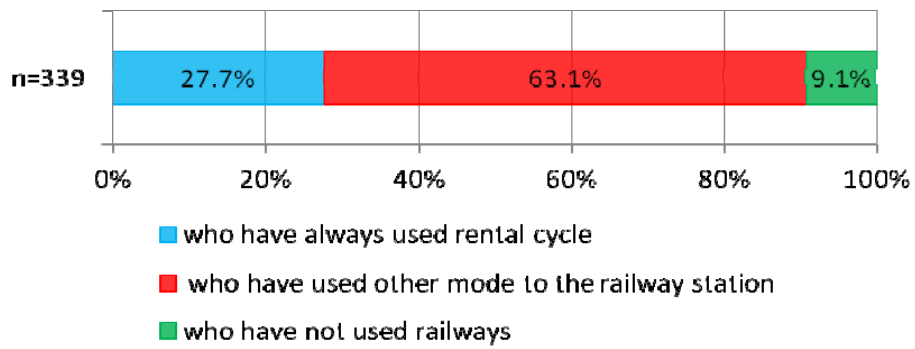


Fig.6. How have your transport behavior changed after starting to use rental cycle?

