



December 25, 2014

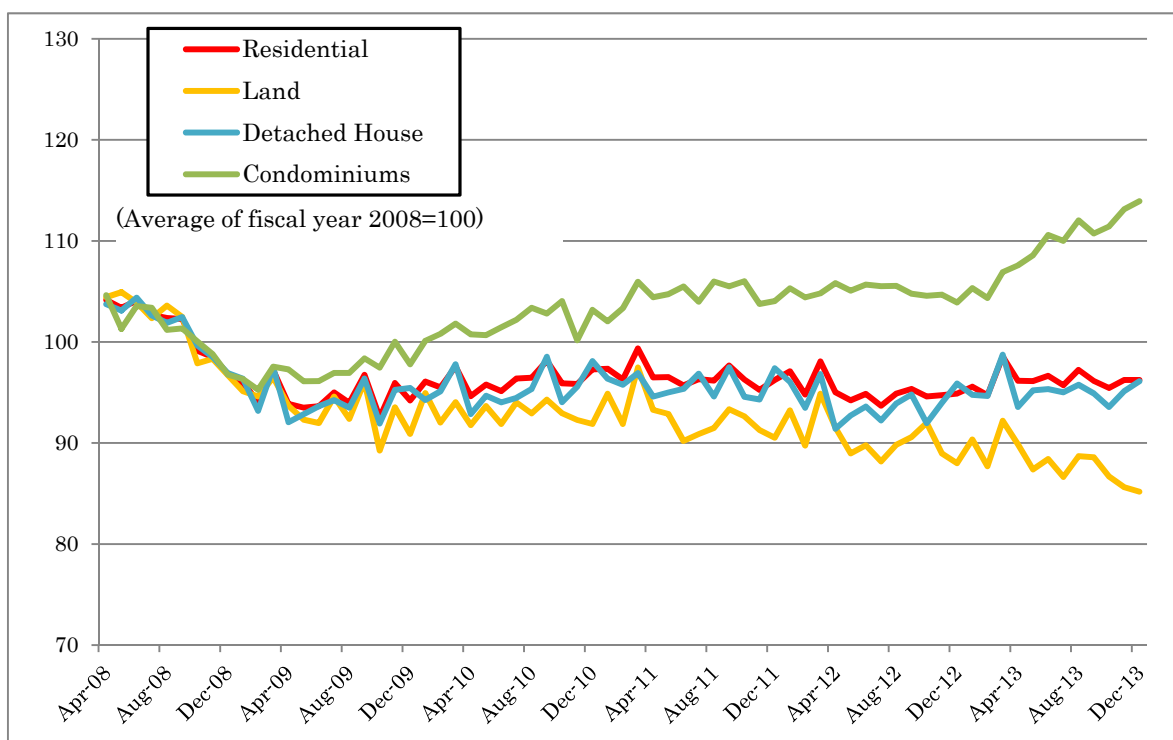
Japan Residential Property Price Index

(Revised Figures for October, November and December 2013)

Revised Figures of Japan Residential Property Price Index (JRPI) is based on the actual transaction data of residential property (approximately 300 thousand transactions every year) and additional information checking by on-site survey to provide indices by Region and Metropolitan Areas.

MLIT publishes JRPI (Revised Figures for October, November and December 2013) .

【Japan Residential Property Price Index (Revised Figures, All Japan)】



☆JRPI is published on the website of ‘Land and Property in Japan’ .

Land and Property in Japan Home ⇒ Land Price ⇒ Japan Residential Property Price Index

<http://tochi.mlit.go.jp/english/land-prices/property-price-index>

Media Enquiries:

Ms. TADA, Ms. EGAWA

Real Estate Market Division

Land Economy and Construction and Engineering Industry Bureau, MLIT

Phone: +81 (0)3 5253-8375

I. About Japan Residential Property Price Index (JRPI)

【Background】

The International Monetary Fund and other international organizations recommended the G20 countries to compile residential property price indices (RPPI) based on the international RPPI Handbook. (A coordinated team of international organizations worked together and edited the Handbook in May 2011.)

MLIT launches provisional compilation of the “Residential Property Price Index”, based on the actual transaction data of residential property (approximately 300 thousand transactions every year) to provide indices by Region and Metropolitan Areas in August 2012.

【Outline of Preliminary Figures and Revised Figures】

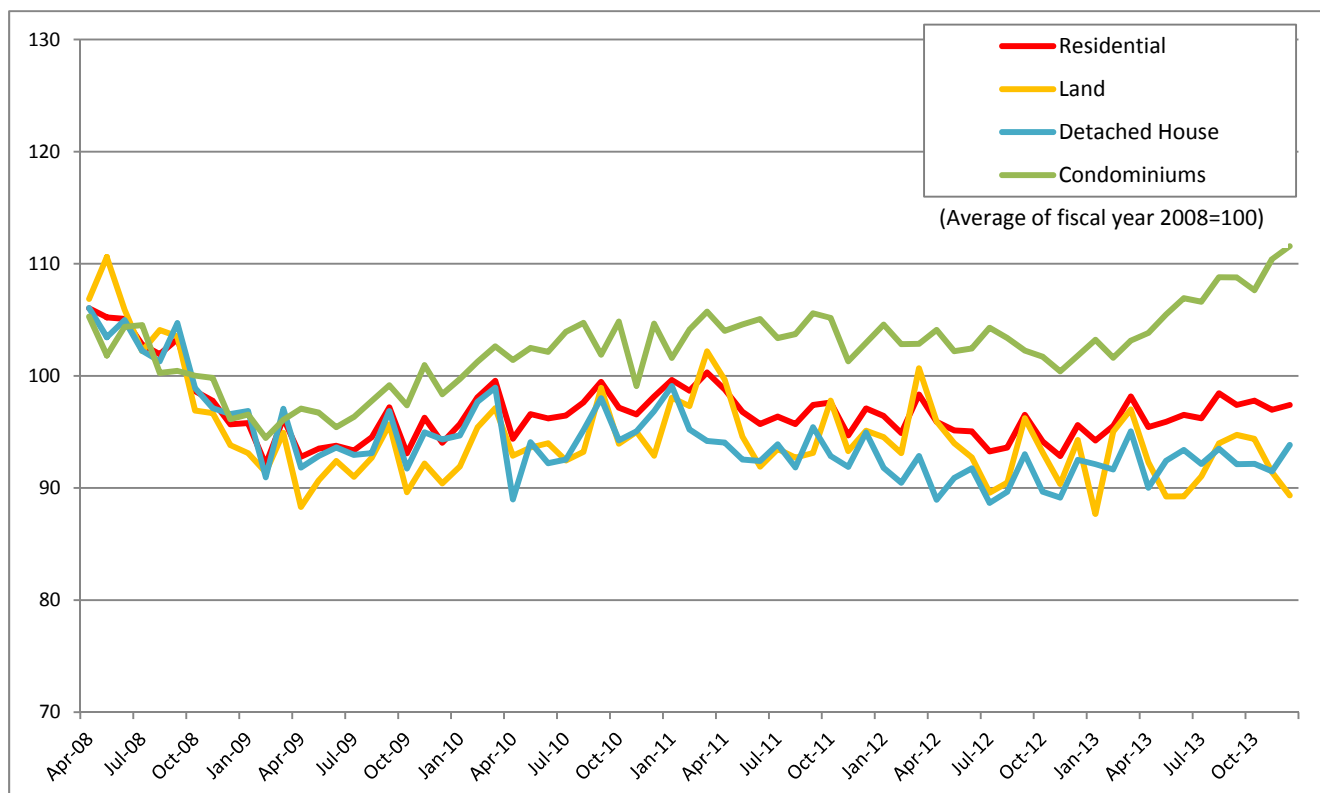
	Preliminary Figures	Revised Figures
Sort of Indexes	<ul style="list-style-type: none"> • Residential property <ul style="list-style-type: none"> • Land & detached house • Condominiums 	<ul style="list-style-type: none"> • Residential property <ul style="list-style-type: none"> • Land • detached house • Condominiums
Regions	<ul style="list-style-type: none"> • All Japan • Regions (Hokkaido, Tohoku, Kanto, Hokuriku, Chubu, Kinki, Chugoku, Shikoku, Kyushu-Okinawa, Total 9 regions) • Metropolitan Areas (Tokyo including suburbs, Tokyo, Nagoya, Kyoto-Osaka-Kobe) 	<ul style="list-style-type: none"> • All Japan • Regions (Hokkaido, Tohoku, Kanto, Hokuriku, Chubu, Kinki, Chugoku, Shikoku, Kyushu-Okinawa, Total 9 regions) • Metropolitan Areas (Tokyo including suburbs, Nagoya, Kyoto-Osaka-Kobe)
Term	<ul style="list-style-type: none"> • From April, 2008 (Tokyo: April, 1998) 	<ul style="list-style-type: none"> • From April, 2008
Base period	<ul style="list-style-type: none"> • Monthly indexation by average 2008 (F.Y.) equals to 100. 	<ul style="list-style-type: none"> • Monthly indexation by average 2008 (F.Y.) equals to 100.
Periodically	<ul style="list-style-type: none"> • Monthly 	<ul style="list-style-type: none"> • Monthly
Method of calculation	<ul style="list-style-type: none"> • Hedonic Approach 	<ul style="list-style-type: none"> • Hedonic Approach
Data	<ul style="list-style-type: none"> • Real estate transaction price 	<ul style="list-style-type: none"> • Real estate transaction price • additional information checking by on-site
Time lag	<ul style="list-style-type: none"> • About 3 months 	<ul style="list-style-type: none"> • About 1 year
Frequency	<ul style="list-style-type: none"> • Monthly 	<ul style="list-style-type: none"> • Quarterly

III. 【Schedule】

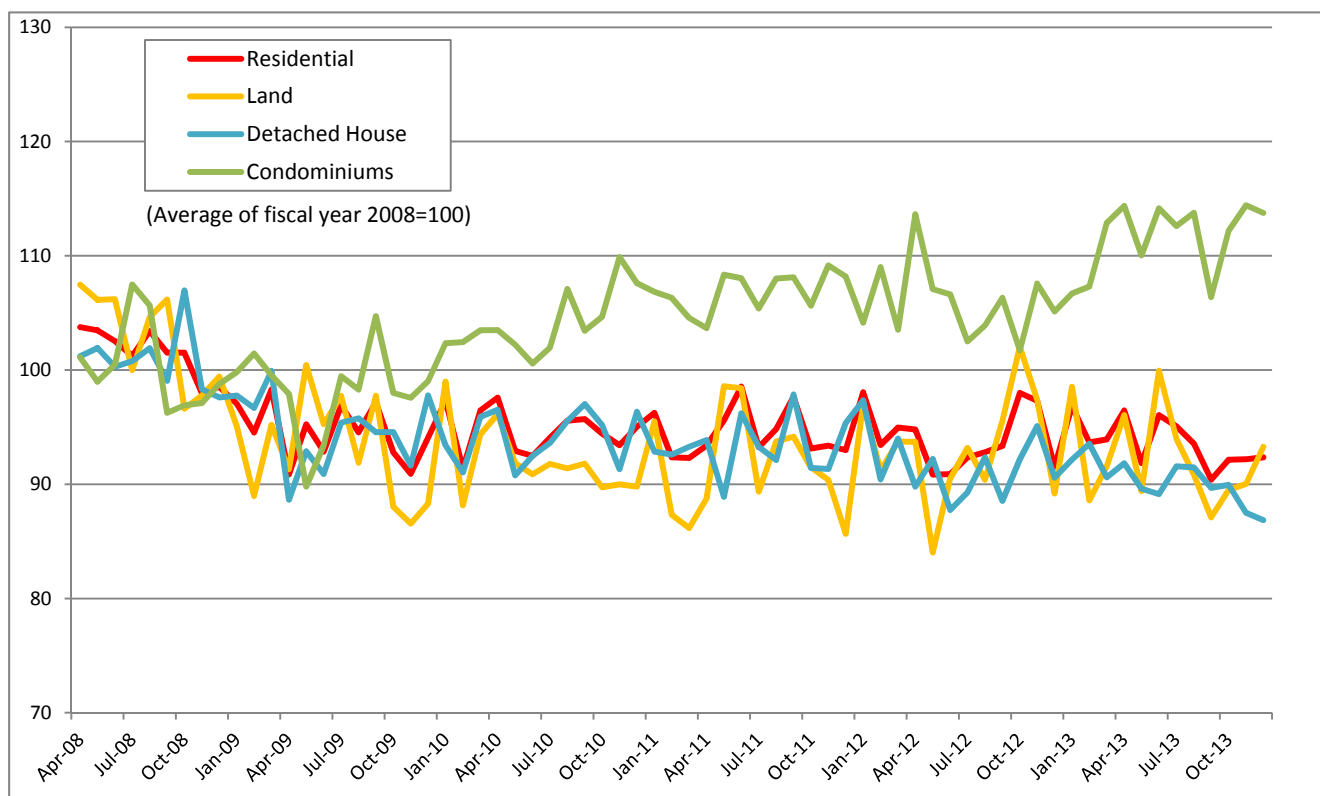
Publication Schedule	Preliminary Figures	Revised Figures
December 25, 2014	September, 2014	October, November and December, 2013
the last ten days of January, 2015	October, 2014	–
the last ten days of February, 2015	November, 2014	–

IV. Revised Figures for October, November and December 2013

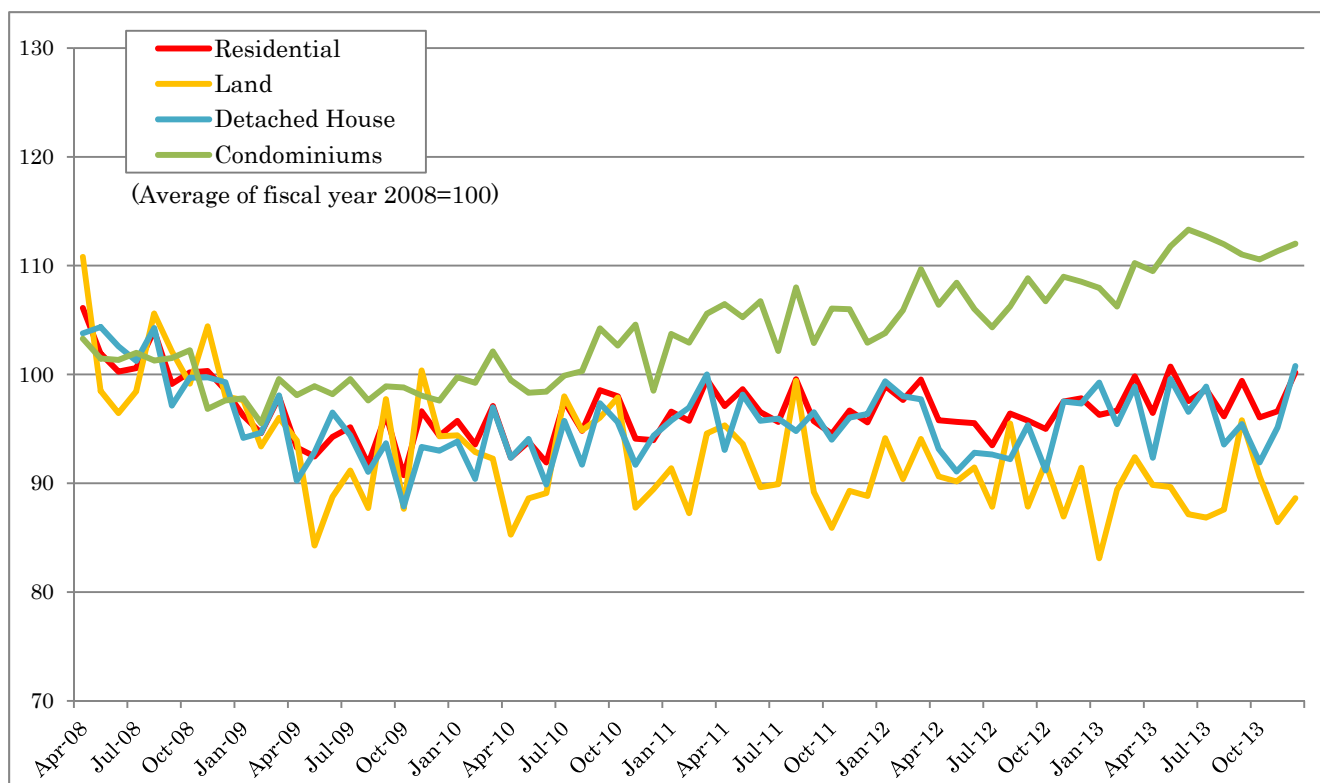
【Tokyo including suburbs】



【Nagoya】



【Kyoto-Osaka-Kobe】



※Tokyo including suburbs : Saitama・Chiba・Tokyo・Kanagawa Nagoya : Gifu・Aichi・Mie Kyoto-Osaka-Kobe : Kyoto・Osaka・Hyogo

	Residential				Land				Detached House				Condominiums			
	Residential Property Price Index (average of fiscal year 2008=100)	change compared to year-earlier month (%)	median index (average of fiscal year 2008=100)	Number of Samples used for calculation	Residential Property Price Index (average of fiscal year 2008=100)	change compared to year-earlier month (%)	median index (average of fiscal year 2008=100)	Number of Samples used for calculation	Residential Property Price Index (average of fiscal year 2008=100)	change compared to year-earlier month (%)	median index (average of fiscal year 2008=100)	Number of Samples used for calculation	Residential Property Price Index (average of fiscal year 2008=100)	change compared to year-earlier month (%)	median index (average of fiscal year 2008=100)	Number of Samples used for calculation
Apr-08	104.2		105.3	12957	104.4		105.7	4367	103.7		102.0	5120	104.6		102.0	3470
May-08	103.4		98.8	13171	104.9		104.4	5014	103.1		99.5	5146	101.3		97.3	3011
Jun-08	104.1		101.7	14517	103.9		100.1	5517	104.4		107.0	5713	103.5		100.2	3287
Jul-08	102.7		100.1	15369	102.4		100.7	5725	102.6		99.5	6112	103.4		100.2	3532
Aug-08	102.4		102.0	13743	103.6		104.6	5167	101.9		103.5	5473	101.2		100.2	3123
Sep-08	102.3		100.1	13949	102.5		100.1	5172	102.5		103.5	5518	101.3		97.3	3259
Oct-08	99.1		95.6	14614	97.9		95.7	5426	99.6		93.6	5769	100.0		99.1	3419
Nov-08	98.5		97.5	13072	98.3		95.7	4660	98.5		98.1	5376	98.8		98.4	3036
Dec-08	96.8		95.6	14643	96.7		95.8	5654	96.9		94.6	5644	96.8		99.3	3345
Jan-09	96.0		95.6	10146	95.1		95.7	3579	96.4		92.1	3951	96.3		100.2	2616
Feb-09	94.1		97.5	10671	94.6		95.7	3578	93.2		99.5	4268	95.3		94.3	2825
Mar-09	97.2		110.3	17277	96.5		105.8	5415	97.5		107.0	6878	97.6		111.4	4984
Apr-09	93.9	▲ 9.9	97.5	12965	93.7	▲ 10.3	99.0	4245	92.1	▲ 11.3	89.6	5142	97.3	▲ 7.0	98.5	3578
May-09	93.5	▲ 9.6	95.6	11792	92.3	▲ 12.0	99.2	4088	92.8	▲ 10.0	89.6	4589	96.1	▲ 5.1	99.1	3115
Jun-09	93.6	▲ 10.0	95.6	15535	92.0	▲ 11.5	96.3	5614	93.6	▲ 10.3	91.1	5983	96.1	▲ 7.2	101.7	3938
Jul-09	95.0	▲ 7.5	96.9	15408	94.6	▲ 7.6	100.1	5500	94.2	▲ 8.2	92.7	5939	96.9	▲ 6.2	100.2	3969
Aug-09	94.0	▲ 8.2	98.8	12504	92.4	▲ 10.8	98.2	4542	93.5	▲ 8.2	93.6	4690	96.9	▲ 4.2	103.9	3272
Sep-09	96.7	▲ 5.4	101.1	13762	96.1	▲ 6.3	104.4	5100	96.4	▲ 5.9	94.8	5167	98.4	▲ 2.9	105.0	3495
Oct-09	92.5	▲ 6.7	94.8	13655	89.3	▲ 8.8	91.4	5005	91.9	▲ 7.7	91.5	5009	97.5	▲ 2.6	99.1	3641
Nov-09	95.9	▲ 2.6	95.6	14217	93.5	▲ 4.9	97.0	5143	95.3	▲ 3.3	89.6	5219	100.0	1.2	100.2	3855
Dec-09	94.2	▲ 2.7	95.6	15230	90.9	▲ 6.0	95.7	5780	95.5	▲ 1.5	98.6	5653	97.8	1.1	99.6	3797
Jan-10	96.1	0.1	94.3	9919	94.9	▲ 0.2	102.7	3661	94.3	▲ 2.2	82.0	3459	100.1	3.9	102.3	2799
Feb-10	95.5	1.5	98.8	11999	92.0	▲ 2.7	95.7	4168	95.1	2.1	92.7	4391	100.8	5.8	103.2	3440
Mar-10	97.6	0.4	107.1	18165	94.0	▲ 2.5	104.3	6020	97.8	0.3	100.0	6705	101.8	4.4	109.1	5440
Apr-10	94.6	0.8	95.6	13949	91.8	▲ 2.0	101.2	4763	92.9	0.9	89.6	5161	100.8	3.6	97.2	4025
May-10	95.8	2.4	95.6	12342	93.7	1.5	99.7	4514	94.7	2.0	89.6	4489	100.7	4.7	97.3	3339
Jun-10	95.1	1.6	95.6	15016	91.9	▲ 0.1	95.7	5966	94.0	0.4	92.3	5148	101.5	5.5	101.4	3902
Jul-10	96.4	1.5	96.2	16087	94.0	▲ 0.6	97.3	5942	94.5	0.2	95.7	5687	102.2	5.4	101.7	4458
Aug-10	96.5	2.7	98.5	14148	92.9	0.6	98.3	5447	95.3	2.0	99.5	5126	103.4	6.7	101.4	3575
Sep-10	98.1	1.4	97.5	15386	94.3	▲ 1.9	95.4	5887	98.5	2.2	99.6	5537	102.8	4.5	105.5	3962
Oct-10	95.9	3.7	95.6	14379	92.9	4.1	95.7	5435	94.0	2.3	94.6	5343	104.1	6.8	94.3	3601
Nov-10	95.8	▲ 0.1	100.7	15481	92.3	▲ 1.3	98.3	5506	95.6	0.3	98.6	5668	100.2	0.2	106.1	4307
Dec-10	97.3	3.3	98.8	17169	91.9	1.1	95.7	6503	98.1	2.8	100.8	6365	103.2	5.5	101.4	4301
Jan-11	97.4	1.3	98.8	11013	94.9	▲ 0.1	99.2	4215	96.4	2.2	92.7	3764	102.0	1.9	106.8	3034
Feb-11	96.3	0.8	98.7	11550	91.9	▲ 0.2	98.2	4215	95.8	0.7	98.1	4198	103.3	2.5	99.6	3137
Mar-11	99.4	1.8	108.3	17193	97.5	3.7	104.4	5964	96.9	▲ 0.9	103.5	6280	105.9	4.1	115.0	4949
Apr-11	96.5	2.0	95.6	12478	93.3	1.6	95.7	4477	94.6	1.9	92.1	4817	104.4	3.6	98.8	3184
May-11	96.5	0.8	94.6	12419	92.9	▲ 0.8	95.7	4714	95.0	0.4	92.6	4721	104.7	4.0	95.5	2984
Jun-11	95.7	0.6	94.9	14668	90.2	▲ 1.8	91.4	5855	95.4	1.4	97.1	5449	105.5	4.0	97.3	3364
Jul-11	96.3	▲ 0.1	95.6	14160	90.9	▲ 3.3	93.5	5606	96.9	2.5	99.5	5333	104.0	1.8	94.3	3221
Aug-11	96.2	▲ 0.3	98.6	13463	91.5	▲ 1.5	98.3	5066	94.6	▲ 0.8	98.6	5175	106.0	2.5	95.5	3222
Sep-11	97.7	▲ 0.5	100.7	14737	93.3	▲ 1.0	95.7	5808	97.5	▲ 1.1	104.5	5614	105.5	2.6	101.7	3315
Oct-11	96.3	0.4	94.3	13255	92.6	▲ 0.3	90.5	5338	94.6	0.6	99.5	4969	106.0	1.9	94.3	2948
Nov-11	95.3	▲ 0.6	95.6	14155	91.3	▲ 1.1	93.8	5335	94.3	▲ 1.3	98.6	5611	103.8	3.6	96.7	3209
Dec-11	96.2	▲ 1.1	95.6	16564	90.5	▲ 1.5	92.2	6496	97.4	▲ 0.7	103.5	6373	104.1	0.8	97.3	3695
Jan-12	97.1	▲ 0.3	95.6	10042	93.2	▲ 1.7	98.9	3969	96.0	▲ 0.3	93.6	3619	105.3	3.2	97.3	2454
Feb-12	94.8	▲ 1.5	95.6	12387	89.7	▲ 2.3	93.2	4501	93.5	▲ 2.4	99.5	4765	104.4	1.0	95.5	3121
Mar-12	98.1	▲ 1.3	106.8	18790	94.9	▲ 2.7	100.2	6609	96.8	▲ 0.1	104.5	7084	104.8	▲ 1.1	110.3	5097
Apr-12	95.0	▲ 1.5	94.6	13436	91.5	▲ 1.9	91.6	4804	91.4	▲ 3.4	93.1	5092	105.8	1.3	97.3	3540
May-12	94.2	▲ 2.4	93.7	14139	89.0	▲ 4.2	93.7	5560	92.7	▲ 2.4	93.6	5283	105.1	0.3	97.3	3296
Jun-12	94.9	▲ 0.9	94.3	15264	89.8	▲ 0.5	91.4	5952	93.6	▲ 1.8	97.1	5857	105.7	0.2	95.2	3455
Jul-12	93.7	▲ 2.7	93.7	15965	88.2	▲ 3.0	91.4	6285	92.2	▲ 4.8	95.3	6062	105.5	1.5	94.3	3618
Aug-12	94.9	▲ 1.3	95.6	14791	89.8	▲ 1.8	91.4	5752	93.9	▲ 0.7	98.6	5745	105.6	▲ 0.4	99.9	3294
Sep-12	95.4	▲ 2.4	97.5	14450	90.6	▲ 3.0	93.8	5768	94.8	▲ 2.8	102.0	5380	104.8	▲ 0.7	99.1	3302
Oct-12	94.6	▲ 1.7	91.5	15160	92.0	▲ 0.7	89.9	6090	92.0	▲ 2.8	94.6	5599	104.6	▲ 1.4	93.2	3471
Nov-12	94.7	▲ 0.6	95.5	16112	89.0	▲ 2.5	90.0	6219	94.0	▲ 0.4	98.6	6081	104.7	0.9	97.3	3812
Dec-12	94.9	▲ 1.4	95.6	17481	88.0	▲ 2.8	88.6	6982	95.9	▲ 1.5	104.5	6699	103.9	▲ 0.1	100.2	3800
Jan-13	95.6	▲ 1.6	91.3	10892	90.4	▲ 3.1	92.0	4351	94.8	▲ 1.3	93.6	3812	105.3	0.0	92.0	2729
Feb-13	94.7	▲ 0.1	95.6	13349	87.7	▲ 2.3	87.0	4896	94.7	1.3	101.0	4960	104.3	▲ 0.1	94.3	3493
Mar-13	98.6	0.5	107.7	20643	92.2	▲ 2.8	97.5	6984	98.7	2.0	108.6	7966	106.9	2.0	109.1	5693
Apr-13	96.2	1.2	96.0	15724	89.9	▲ 1.8	91.4	5549	93.6	2.4	94.6	5835	107.6	1.7	102.6	4340
May-13	96.1	2.0	95.6	15611	87.4	▲ 1.8	87.0	5878	95.2	2.7	98.6	5809	108.6	3.3	99.6	3924
Jun-13	96.7	1.9	98.8	16738	88.4	▲ 1.5	91.4	6343	95.3	1.8	103.5	6376	110.6	4.7	103.2	4019
Jul-13	95.7	2.2	95.6	18102	86.6	▲ 1.7	87.7	7081	95.0	3.0	101.0	6729	110.0	4.2	99.8	4292
Aug-13	97.2	2.5	98.8	15999	88.7	▲ 1.3	87.0	6181	95.8	2.0	106.0	6130	112.0	6.1	100.5	3688
Sep-13	96.1	0.8	98.8	16057	88.6	▲ 2.2	91.4	6387	94.9	0.1	106.0	6114	110.7	5.7	102.6	3556
Oct-13	95.4	0.9	93.7	15769	86.7	▲ 5.4	87.0	6189	93.6	1.7	94.6	5900	111.4	6.6	100.2	3680
Nov-13	96.2	1.6	95.6	16007	85.6	▲ 2.3	87.7	5831	95.1	1.2	100.0	6331	113.1	8.1	97.3	3845
Dec-13	96.2	1.4	95.6	17571	85.2	▲ 0.7	87.0	6745	96.1	0.2	101.0	6863	113.9	9.6	99.1	3963

	Residential				Land				Detached House				Condominiums			
	Residential Property Price Index (average of fiscal year 2008=100)	change compared to year-earlier month (%)	median index (average of fiscal year 2008=100)	Number of Samples used for calculation	Residential Property Price Index (average of fiscal year 2008=100)	change compared to year-earlier month (%)	median index (average of fiscal year 2008=100)	Number of Samples used for calculation	Residential Property Price Index (average of fiscal year 2008=100)	change compared to year-earlier month (%)	median index (average of fiscal year 2008=100)	Number of Samples used for calculation	Residential Property Price Index (average of fiscal year 2008=100)	change compared to year-earlier month (%)	median index (average of fiscal year 2008=100)	Number of Samples used for calculation
Apr-08	100.5		101.7	624	103.9		103.1	229	98.0		92.9	244	101.4		105.2	151
May-08	99.4		96.4	631	101.0		98.6	288	96.8		89.9	241	104.3		94.5	102
Jun-08	99.7		98.3	755	94.5		95.1	348	102.5		103.7	292	101.9		107.4	115
Jul-08	101.7		97.9	798	100.0		95.7	374	104.0		103.7	287	98.2		94.5	137
Aug-08	102.7		95.2	696	103.2		95.3	328	101.8		99.4	247	103.9		102.0	121
Sep-08	101.4		102.7	757	97.7		98.6	317	104.1		97.2	309	101.3		97.7	131
Oct-08	99.5		100.8	822	94.7		93.4	331	103.2		106.3	342	98.4		97.8	149
Nov-08	103.8		97.2	755	105.4		114.8	357	102.9		108.4	280	102.3		114.4	118
Dec-08	100.8		97.2	717	102.9		97.8	335	100.7		102.8	255	97.1		98.8	127
Jan-09	95.0		101.3	411	97.0		97.0	148	93.1		95.0	173	97.1		80.5	90
Feb-09	94.8		94.2	441	94.1		87.4	170	96.1		97.0	161	93.1		91.3	110
Mar-09	100.6		117.2	705	105.7		123.3	256	96.7		103.7	274	101.2		116.0	175
Apr-09	100.0	▲ 0.5	104.4	649	100.8	▲ 3.0	90.4	216	101.0	3.0	103.7	270	97.0	▲ 4.4	107.4	163
May-09	94.9	▲ 4.5	93.7	620	100.7	▲ 0.2	96.0	256	93.4	▲ 3.5	86.4	243	90.2	▲ 13.5	121.3	121
Jun-09	98.4	▲ 1.3	91.1	759	100.1	6.0	96.3	343	98.1	▲ 4.3	86.4	269	96.1	▲ 5.7	102.0	147
Jul-09	100.8	▲ 0.9	100.8	771	111.0	10.9	103.5	333	95.1	▲ 8.5	91.6	287	96.4	▲ 1.8	99.9	151
Aug-09	98.9	▲ 3.7	97.2	614	100.6	▲ 2.5	95.2	289	99.4	▲ 2.3	92.9	214	94.6	▲ 8.9	107.4	111
Sep-09	102.2	0.7	103.2	662	102.0	4.4	95.9	271	104.4	0.3	99.4	266	96.1	▲ 5.2	114.9	125
Oct-09	95.4	▲ 4.1	93.5	821	93.9	▲ 0.9	96.4	404	94.8	▲ 8.2	101.5	286	100.8	2.5	107.4	131
Nov-09	96.9	▲ 6.6	98.4	705	95.1	▲ 9.8	96.1	301	97.3	▲ 5.4	84.7	247	99.6	▲ 2.6	104.2	157
Dec-09	97.2	▲ 3.6	96.2	676	94.0	▲ 8.6	96.5	279	97.6	▲ 3.2	86.4	265	101.7	4.8	105.2	132
Jan-10	93.8	▲ 1.2	95.9	369	98.1	1.2	97.8	149	90.1	▲ 3.3	91.0	129	93.9	▲ 3.2	89.1	91
Feb-10	96.9	2.3	95.9	403	87.4	▲ 7.1	90.1	156	101.4	5.4	111.5	150	98.5	5.8	92.8	97
Mar-10	99.3	▲ 1.3	108.1	761	102.8	▲ 2.7	110.4	283	97.3	0.6	102.0	303	100.0	▲ 1.2	106.0	175
Apr-10	99.4	▲ 0.6	103.8	676	103.6	2.9	103.5	243	98.4	▲ 2.6	103.7	271	96.3	▲ 0.7	86.3	162
May-10	98.9	4.2	98.9	632	95.7	▲ 5.0	102.5	261	101.3	8.5	103.7	241	98.6	9.3	92.9	130
Jun-10	95.5	▲ 3.0	92.3	702	94.4	▲ 5.8	98.6	307	94.2	▲ 3.9	86.4	248	100.6	4.6	91.3	147
Jul-10	95.5	▲ 5.2	93.5	827	96.8	▲ 12.7	90.4	363	94.0	▲ 1.1	88.6	295	96.8	0.4	95.6	169
Aug-10	95.8	▲ 3.2	92.7	734	91.4	▲ 9.1	93.7	326	95.9	▲ 3.5	86.8	289	104.0	10.0	107.4	119
Sep-10	95.4	▲ 6.6	91.1	843	90.9	▲ 10.8	89.5	386	96.4	▲ 7.7	95.0	301	100.2	4.3	120.8	156
Oct-10	99.4	4.3	99.8	824	96.4	2.7	85.9	349	100.0	5.6	100.7	300	102.6	1.8	110.6	175
Nov-10	100.0	3.1	103.2	756	101.6	6.9	98.9	306	98.7	1.5	87.6	296	100.2	0.6	99.3	154
Dec-10	99.8	2.6	97.2	758	92.0	▲ 2.2	82.2	316	103.3	5.8	103.3	322	101.4	▲ 0.2	100.4	120
Jan-11	94.5	0.7	97.2	473	89.2	▲ 9.1	82.2	213	98.2	9.0	103.7	171	97.7	4.0	102.0	89
Feb-11	97.1	0.1	94.7	456	96.3	10.2	83.9	183	98.0	▲ 3.3	88.6	168	97.1	▲ 1.5	94.5	105
Mar-11	98.9	▲ 0.4	104.5	771	100.8	▲ 1.9	113.6	297	94.9	▲ 2.4	103.7	291	104.1	4.1	117.3	183
Apr-11	95.0	▲ 4.4	88.7	677	89.9	▲ 13.2	91.5	282	94.7	▲ 3.8	86.4	256	105.4	9.4	98.8	139
May-11	98.0	▲ 1.0	97.2	679	96.8	1.2	99.4	298	95.7	▲ 5.6	88.1	237	105.1	6.6	92.9	144
Jun-11	101.3	6.1	97.2	736	100.1	6.1	90.4	325	100.7	6.9	95.0	262	104.2	3.6	107.4	149
Jul-11	100.8	5.5	99.3	787	99.1	2.3	103.5	374	100.6	7.0	97.8	278	105.0	8.5	105.2	135
Aug-11	101.2	5.7	95.5	642	101.0	10.5	96.3	278	98.2	2.4	80.4	260	109.8	5.5	104.2	104
Sep-11	97.2	1.8	91.1	865	92.1	1.2	89.2	408	98.0	1.7	95.0	337	106.7	6.5	122.4	120
Oct-11	101.1	1.7	87.6	840	95.2	▲ 1.3	93.7	409	104.7	4.7	95.0	308	106.0	3.3	96.6	123
Nov-11	97.9	▲ 2.0	97.2	820	96.6	▲ 5.0	90.2	358	94.9	▲ 3.9	97.6	335	110.4	10.2	107.4	127
Dec-11	100.7	0.9	97.2	801	98.4	7.0	106.8	366	101.5	▲ 1.7	98.5	302	107.1	5.6	89.1	133
Jan-12	94.2	▲ 0.3	81.7	422	85.8	▲ 3.8	82.2	202	94.3	▲ 3.9	82.1	139	110.7	13.3	91.3	81
Feb-12	93.3	▲ 3.9	87.1	529	82.7	▲ 14.1	78.9	193	94.2	▲ 3.9	95.0	225	106.4	9.6	94.5	111
Mar-12	105.5	6.7	106.9	782	109.5	8.6	105.2	315	102.3	7.8	109.7	307	106.3	2.1	96.1	160
Apr-12	103.7	9.1	94.7	640	94.8	5.5	87.1	237	105.8	11.7	90.7	257	110.7	5.0	96.6	146
May-12	98.6	0.7	85.0	726	93.3	▲ 3.6	81.3	348	97.1	1.6	86.4	260	113.0	7.6	107.4	118
Jun-12	99.4	▲ 1.8	87.5	800	94.8	▲ 5.3	88.9	374	97.6	▲ 3.1	77.4	288	114.7	10.1	117.6	138
Jul-12	101.1	0.3	90.5	832	91.1	▲ 8.1	90.4	408	104.9	4.3	86.4	287	112.0	6.7	110.6	137
Aug-12	104.0	2.8	93.5	831	101.7	0.7	97.8	366	101.2	3.1	86.4	317	115.7	5.4	105.2	148
Sep-12	100.2	3.1	89.9	783	88.1	▲ 4.4	98.6	353	102.7	4.8	85.5	314	123.5	15.7	108.5	116
Oct-12	99.3	▲ 1.8	87.4	870	96.2	1.1	85.5	377	96.7	▲ 7.7	84.7	339	112.9	6.6	91.3	154
Nov-12	97.5	▲ 0.5	85.0	891	88.2	▲ 8.7	87.3	453	100.4	5.7	82.1	301	111.4	0.9	116.0	137
Dec-12	98.9	▲ 1.8	83.7	786	89.6	▲ 8.9	82.2	372	104.0	2.5	86.8	284	107.1	0.1	85.9	130
Jan-13	97.7	3.8	85.0	429	95.0	10.8	97.6	194	93.7	▲ 0.7	81.2	126	108.4	▲ 2.1	84.8	109
Feb-13	99.3	6.4	85.3	510	88.9	7.5	74.2	247	102.2	8.5	108.0	180	116.6	9.6	99.9	83
Mar-13	108.1	2.5	109.3	838	98.4	▲ 10.1	103.5	344	109.8	7.3	109.8	306	118.7	11.7	123.5	188
Apr-13	105.0	1.3	102.0	684	98.1	3.5	101.1	266	104.4	▲ 1.3	89.6	270	114.3	3.3	117.0	148
May-13	101.6	3.0	85.0	708	94.3	1.1	95.3	357	99.1	2.0	86.4	239	121.3	7.4	95.9	112
Jun-13	107.8	8.5	97.2	834	97.5	2.8	98.6	370	108.1	10.8	91.2	338	127.0	10.7	107.3	126
Jul-13	99.4	▲ 1.7	85.0	923	91.6	0.6	85.7	442	98.8	▲ 5.8	77.8	334	123.3	10.1	103.1	147
Aug-13	105.4	1.3	94.7	859	95.1	▲ 6.5	92.0	381	103.1	1.8	93.3	325	129.0	11.5	98.8	153
Sep-13	102.6	2.4	94.7	843	90.9	3.3	87.8	383	104.1	1.3	86.4	338	125.3	1.4	106.3	122
Oct-13	99.1	▲ 0.2	87.4	929	87.0	▲ 9.6	82.2	437	96.4	▲ 0.3	86.0	356	129.2	14.4	106.3	136
Nov-13	103.0	5.7	95.9	903	86.9	▲ 1.5	95.3	396	103.1	2.7	90.7	339	127.7	14.6	117.6	168
Dec-13	101.3	2.5	91.1	794	87.4	▲ 2.4	85.0	353	103.1	▲ 0.9	84.7	299	121.9	13.8	104.7	142

	Residential				Land				Detached House				Condominiums			
	Residential Property Price Index (average of fiscal year 2008=100)	change compared to year-earlier month (%)	median index (average of fiscal year 2008=100)	Number of Samples used for calculation	Residential Property Price Index (average of fiscal year 2008=100)	change compared to year-earlier month (%)	median index (average of fiscal year 2008=100)	Number of Samples used for calculation	Residential Property Price Index (average of fiscal year 2008=100)	change compared to year-earlier month (%)	median index (average of fiscal year 2008=100)	Number of Samples used for calculation	Residential Property Price Index (average of fiscal year 2008=100)	change compared to year-earlier month (%)	median index (average of fiscal year 2008=100)	Number of Samples used for calculation
Apr-08	102.6		104.9	995	100.0		104.5	486	104.4		109.2	400	(104.1)		99.2	109
May-08	108.4		99.6	1121	113.2		103.1	606	104.6		93.6	436	(103.8)		104.5	79
Jun-08	102.6		100.1	1203	106.9		104.5	664	98.9		104.7	460	(100.9)		97.1	79
Jul-08	100.3		97.1	1312	95.9		96.2	673	102.8		103.7	550	(108.1)		97.1	89
Aug-08	102.6		104.6	1179	102.0		102.7	611	102.9		103.4	493	(105.2)		104.5	75
Sep-08	101.4		98.8	1224	100.1		95.7	659	98.8		107.0	484	(101.5)		104.5	81
Oct-08	98.1		97.6	1339	92.7		96.2	631	102.2		91.0	577	(99.2)		100.3	131
Nov-08	95.9		96.3	1136	93.8		91.7	566	96.7		96.4	479	(101.5)		99.2	91
Dec-08	98.1		99.4	1327	100.8		105.9	698	96.1		90.9	512	(94.4)		102.9	117
Jan-09	100.0		98.8	847	101.8		99.0	434	98.7		92.2	338	(97.6)		88.8	75
Feb-09	95.2		96.6	950	98.2		92.1	474	93.6		101.0	376	(91.1)		98.2	100
Mar-09	95.4		106.1	1284	94.7		108.6	601	96.4		106.9	551	(92.8)		103.7	132
Apr-09	91.9	▲ 10.5	98.8	1009	90.8	▲ 9.3	92.1	479	92.8	▲ 11.0	92.2	425	(92.0)	(▲11.6)	112.8	105
May-09	94.4	▲ 12.9	96.0	912	86.2	▲ 23.9	93.4	460	101.7	▲ 2.8	100.5	360	(94.6)	(▲8.9)	115.9	92
Jun-09	93.9	▲ 8.5	96.3	1242	93.5	▲ 12.5	92.2	584	93.5	▲ 5.5	91.0	558	(98.0)	(▲2.9)	105.1	100
Jul-09	96.6	▲ 3.7	98.8	1280	95.0	▲ 0.9	97.6	625	99.0	▲ 3.7	91.0	520	89.8	▲ 16.9	94.0	135
Aug-09	92.3	▲ 10.0	95.1	1021	83.9	▲ 17.7	90.0	529	99.9	▲ 2.9	104.7	396	91.1	▲ 13.4	88.8	96
Sep-09	95.0	▲ 6.3	98.8	1157	89.2	▲ 10.8	89.7	591	100.7	▲ 1.9	105.6	472	89.4	▲ 11.9	94.0	94
Oct-09	94.4	▲ 3.8	93.3	1134	90.1	▲ 2.7	89.3	571	96.4	▲ 5.7	103.0	474	100.9	1.6	102.4	89
Nov-09	99.0	3.2	95.8	1162	93.7	▲ 0.1	88.0	601	102.6	6.1	101.0	449	104.2	2.7	110.6	112
Dec-09	95.8	▲ 2.3	93.2	1286	89.2	▲ 11.4	90.3	709	102.0	6.1	106.1	472	96.3	2.0	85.7	105
Jan-10	93.9	▲ 6.1	93.0	791	92.5	▲ 9.1	95.5	404	94.7	▲ 4.1	90.9	312	96.9	▲ 0.7	81.5	75
Feb-10	93.9	▲ 1.4	96.2	866	85.6	▲ 12.9	88.7	445	98.9	5.7	108.3	334	107.3	17.8	99.2	87
Mar-10	94.7	▲ 0.7	105.9	1361	88.5	▲ 6.5	95.3	644	98.6	2.2	116.5	541	97.0	4.6	115.9	176
Apr-10	95.2	3.6	100.8	1040	89.7	▲ 1.2	96.2	505	100.4	8.2	102.0	424	91.9	▲ 0.1	90.9	111
May-10	94.8	0.4	95.7	1017	90.5	5.0	91.5	527	98.9	▲ 2.7	98.7	394	89.8	▲ 5.0	87.2	96
Jun-10	94.9	1.1	95.4	1226	93.1	▲ 0.5	96.2	683	97.9	4.7	109.2	424	87.1	▲ 11.2	80.4	119
Jul-10	96.5	▲ 0.0	93.0	1215	90.6	▲ 4.6	94.4	662	102.1	3.2	109.2	437	96.2	7.1	78.6	116
Aug-10	91.8	▲ 0.6	94.9	1103	89.8	7.0	93.2	609	92.8	▲ 7.2	102.9	396	96.9	6.4	91.1	98
Sep-10	95.7	0.8	94.9	1230	87.4	▲ 2.1	91.7	705	102.2	1.6	110.6	417	105.9	18.4	109.7	108
Oct-10	94.2	▲ 0.1	96.5	1146	91.4	1.5	93.5	617	95.6	▲ 0.8	107.4	423	100.2	▲ 0.6	89.8	106
Nov-10	94.1	▲ 4.9	98.2	1235	86.5	▲ 7.7	89.3	656	100.6	▲ 1.9	109.2	462	92.9	▲ 10.8	108.6	117
Dec-10	95.3	▲ 0.5	100.1	1356	90.5	1.4	101.2	751	98.6	▲ 3.3	113.1	500	104.1	8.2	110.7	105
Jan-11	90.0	▲ 4.2	93.0	607	89.2	▲ 3.6	96.2	345	89.8	▲ 5.1	88.3	199	94.3	▲ 2.7	89.8	63
Feb-11	95.8	2.0	87.2	503	85.2	▲ 0.4	90.7	288	102.8	3.9	89.2	159	105.0	▲ 2.2	88.3	56
Mar-11	94.5	▲ 0.2	96.9	810	87.0	▲ 1.8	90.3	455	96.9	▲ 1.8	109.2	284	(115.2)	(18.7)	128.5	71
Apr-11	99.2	4.3	104.6	873	90.1	0.4	94.2	415	103.1	2.6	109.2	362	(107.1)	(16.6)	104.5	96
May-11	97.9	3.3	98.8	1008	92.8	2.6	89.3	507	100.3	1.4	106.5	407	(104.2)	(16.0)	92.4	94
Jun-11	97.2	2.4	93.0	1140	91.0	▲ 2.2	88.0	613	100.5	2.6	100.1	448	(108.8)	(25.0)	110.8	79
Jul-11	97.7	1.2	93.0	1103	93.6	3.2	96.2	629	100.8	▲ 1.3	100.1	385	(102.7)	(6.8)	88.8	89
Aug-11	100.1	9.0	100.0	1065	91.2	1.6	94.3	573	107.2	15.6	107.9	417	(109.4)	(12.9)	93.0	75
Sep-11	96.0	0.3	97.6	1213	90.8	3.9	96.2	715	100.3	▲ 1.9	109.2	415	(109.8)	(3.7)	96.1	83
Oct-11	98.0	4.0	87.2	1051	90.8	▲ 0.6	87.6	631	103.2	8.0	100.1	346	(115.5)	(15.3)	86.3	74
Nov-11	97.6	3.7	91.1	1104	91.9	6.2	94.6	612	99.2	▲ 1.3	96.5	392	(113.5)	(22.2)	120.1	100
Dec-11	100.0	4.9	94.6	1339	91.4	1.1	94.2	775	106.9	8.4	100.9	454	(115.8)	(11.1)	88.8	110
Jan-12	100.9	12.2	97.5	719	88.8	▲ 0.4	96.0	423	110.6	23.1	104.7	232	(118.1)	(25.2)	116.5	64
Feb-12	98.5	2.9	101.7	901	93.8	10.1	96.2	491	101.7	▲ 1.1	121.1	311	(106.0)	(0.9)	93.0	99
Mar-12	101.7	7.5	107.2	1364	95.2	9.5	103.1	722	104.4	7.8	118.3	479	(112.9)	(▲2.0)	120.1	163
Apr-12	98.5	▲ 0.7	97.6	1054	88.0	▲ 2.3	96.2	551	103.1	0.0	109.2	407	(121.0)	(12.9)	92.4	96
May-12	101.1	3.3	98.8	1230	90.7	▲ 2.3	96.2	686	107.2	6.9	118.3	434	(121.8)	(16.9)	101.7	110
Jun-12	102.7	5.7	97.6	1350	91.2	0.2	94.8	811	109.9	9.4	107.4	437	(128.0)	(17.6)	117.5	102
Jul-12	102.8	5.2	94.3	1451	90.5	▲ 3.3	91.1	854	111.6	10.7	116.5	497	(123.3)	(20.0)	102.4	100
Aug-12	101.0	0.9	104.6	1260	91.4	0.3	96.2	709	108.6	1.3	120.3	469	(117.2)	(7.1)	119.1	82
Sep-12	100.5	4.7	98.2	1258	92.7	2.1	99.0	735	103.6	3.3	118.3	409	123.9	12.8	95.6	114
Oct-12	98.2	0.2	93.0	1405	91.4	0.6	91.9	812	98.1	▲ 5.0	107.4	501	137.4	18.9	133.2	92
Nov-12	98.9	1.3	93.0	1516	86.0	▲ 6.4	89.3	860	103.9	4.7	109.2	534	133.6	17.6	109.2	122
Dec-12	102.7	2.7	96.2	1634	92.8	1.5	91.1	950	108.6	1.6	118.3	561	123.5	6.7	109.7	123
Jan-13	104.0	3.1	100.3	896	100.6	13.4	96.2	523	103.8	▲ 6.2	113.8	288	124.6	5.5	114.9	85
Feb-13	106.2	7.8	92.4	1093	97.7	4.1	86.6	696	111.0	9.2	118.3	327	130.4	23.0	115.4	70
Mar-13	112.6	10.7	110.4	1526	104.1	9.3	100.3	874	118.2	13.2	136.5	498	123.6	9.5	133.2	154
Apr-13	110.8	12.5	95.3	1398	101.9	15.8	82.5	807	111.7	8.4	125.6	457	136.7	13.0	130.5	134
May-13	110.1	8.9	96.5	1381	98.5	8.6	86.6	812	113.1	5.5	116.5	444	141.8	16.5	143.1	125
Jun-13	104.9	2.1	97.7	1485	96.7	6.0	94.1	919	106.9	▲ 2.8	131.1	445	137.2	7.2	114.9	121
Jul-13	102.3	▲ 0.4	97.4	1693	90.8	0.4	92.1	1022	107.9	▲ 3.3	120.7	546	133.0	7.9	123.3	125
Aug-13	104.5	3.5	96.5	1433	92.0	0.7	92.6	877	109.6	0.9	125.6	464	148.5	26.7	124.3	92
Sep-13	104.0	3.5	95.6	1478	94.2	1.6	90.7	917	107.4	3.7	125.6	468	144.7	16.8	120.1	93
Oct-13	106.7	8.6	98.8	1472	94.2	3.1	91.8	875	111.4	13.7	119.3	486	150.4	9.5	126.4	111
Nov-13	106.2	7.4	102.3	1460	94.7	10.2	89.3	794	107.4	3.3	123.1	552	146.5	9.7	139.4	114
Dec-13	103.0	0.3	96.5	1727	91.6	▲ 1.4	86.0	1041	107.3	▲ 1.2	118.3	584	148.7	20.4	146.2	102

※Due to number of samples being insufficient, numbers with parenthesis are "only advisory".

	Residential				Land				Detached House				Condominiums			
	Residential Property Price Index (average of fiscal year 2008=100)	change compared to year-earlier month (%)	median index (average of fiscal year 2008=100)	Number of Samples used for calculation	Residential Property Price Index (average of fiscal year 2008=100)	change compared to year-earlier month (%)	median index (average of fiscal year 2008=100)	Number of Samples used for calculation	Residential Property Price Index (average of fiscal year 2008=100)	change compared to year-earlier month (%)	median index (average of fiscal year 2008=100)	Number of Samples used for calculation	Residential Property Price Index (average of fiscal year 2008=100)	change compared to year-earlier month (%)	median index (average of fiscal year 2008=100)	Number of Samples used for calculation
Apr-08	105.1		102.0	5171	105.3		106.2	1335	104.9		103.4	1931	105.4		102.3	1905
May-08	103.8		100.7	5086	106.5		109.6	1490	103.2		97.5	1907	101.6		97.6	1689
Jun-08	105.1		102.0	5679	105.1		92.9	1632	105.3		103.8	2195	104.4		101.3	1852
Jul-08	103.8		102.0	6004	104.5		106.2	1703	102.8		100.3	2320	104.7		101.3	1981
Aug-08	101.3		102.8	5177	102.7		110.4	1455	100.7		100.8	1986	100.4		101.8	1736
Sep-08	103.5		100.7	5491	104.1		101.6	1536	104.5		104.0	2084	100.7		97.6	1871
Oct-08	98.6		96.8	5514	97.5		90.8	1621	98.6		99.3	2015	99.9		100.4	1878
Nov-08	98.2		98.5	5012	98.3		95.6	1323	97.4		97.5	1992	99.4		99.5	1697
Dec-08	96.4		95.5	5466	95.1		92.9	1583	97.1		95.7	2002	96.5		97.6	1881
Jan-09	94.8		95.5	3898	90.3		87.8	1037	96.7		97.5	1379	95.9		99.2	1482
Feb-09	93.0		96.4	4285	94.1		99.8	1037	91.7		95.8	1661	94.2		92.0	1587
Mar-09	96.9		107.1	7344	96.5		106.2	1745	97.2		104.5	2746	96.9		109.2	2853
Apr-09	93.6	▲ 11.0	95.1	5080	90.4	▲ 14.1	103.0	1263	92.5	▲ 11.8	89.8	1851	97.2	▲ 7.8	97.6	1966
May-09	93.7	▲ 9.7	97.4	4850	92.1	▲ 13.5	106.2	1356	93.2	▲ 9.7	92.3	1768	95.8	▲ 5.7	96.7	1726
Jun-09	92.8	▲ 11.6	96.7	6418	90.5	▲ 13.9	100.4	1822	93.0	▲ 11.7	94.0	2322	95.1	▲ 8.9	97.6	2274
Jul-09	94.5	▲ 9.0	96.8	6289	93.9	▲ 10.2	106.2	1800	93.8	▲ 8.8	96.5	2250	96.3	▲ 8.0	97.2	2239
Aug-09	94.1	▲ 7.1	97.1	5023	91.8	▲ 10.7	102.2	1440	93.9	▲ 6.8	92.3	1707	96.6	▲ 3.8	101.3	1876
Sep-09	96.9	▲ 6.4	100.7	5553	96.6	▲ 7.2	111.0	1589	96.2	▲ 7.9	97.5	1929	98.0	▲ 2.7	102.3	2035
Oct-09	92.1	▲ 6.7	93.4	5576	88.0	▲ 9.8	99.8	1546	91.3	▲ 7.4	88.8	1883	96.4	▲ 3.5	95.3	2147
Nov-09	96.7	▲ 1.5	94.3	5627	92.6	▲ 5.8	100.9	1581	96.5	▲ 0.9	90.5	1875	100.6	1.2	97.6	2171
Dec-09	93.9	▲ 2.5	96.4	6040	90.6	▲ 4.8	96.6	1835	94.6	▲ 2.6	100.3	2035	97.6	1.1	97.6	2170
Jan-10	95.5	0.7	90.3	4003	93.0	3.0	98.1	1154	93.3	▲ 3.5	82.2	1267	99.9	4.2	99.7	1582
Feb-10	97.1	4.4	94.3	5049	93.7	▲ 0.3	99.8	1381	97.2	6.0	90.6	1670	100.8	7.1	99.0	1998
Mar-10	98.5	1.7	102.8	7545	95.1	▲ 1.4	106.2	1955	98.6	1.5	101.0	2519	102.0	5.2	106.9	3071
Apr-10	94.6	1.1	90.0	5573	92.9	2.8	97.2	1469	89.9	▲ 2.8	84.8	1862	101.3	4.1	93.0	2242
May-10	96.7	3.2	92.1	4899	94.7	2.8	100.9	1393	94.4	1.3	87.8	1640	101.8	6.2	96.7	1866
Jun-10	95.7	3.1	94.3	5911	92.3	1.9	97.7	1781	92.7	▲ 0.3	88.8	1924	102.2	7.4	101.8	2206
Jul-10	96.4	2.0	96.8	6450	93.9	0.0	95.6	1866	92.6	▲ 1.2	93.3	2119	102.9	6.9	102.3	2465
Aug-10	97.6	3.8	98.5	5553	92.1	0.3	95.6	1659	96.9	3.2	98.1	1936	104.0	7.7	102.3	1958
Sep-10	98.6	1.8	99.4	6008	95.4	▲ 1.3	102.1	1722	98.3	2.2	97.5	2070	102.4	4.5	102.3	2216
Oct-10	96.2	4.5	96.4	5538	92.6	5.3	99.3	1599	93.4	2.3	93.3	2023	104.5	8.4	97.6	1916
Nov-10	96.5	▲ 0.3	100.7	6268	94.8	2.4	99.8	1630	95.7	▲ 0.8	95.1	2119	98.4	▲ 2.1	108.3	2519
Dec-10	98.9	5.3	99.0	6744	93.1	2.7	94.5	1915	99.2	4.9	101.0	2418	103.9	6.5	100.9	2411
Jan-11	98.9	3.6	100.7	4531	97.1	4.5	106.2	1284	98.2	5.2	92.6	1475	101.3	1.5	107.8	1772
Feb-11	98.0	0.8	98.5	4671	94.4	0.7	106.4	1277	96.2	▲ 1.0	96.8	1623	103.7	2.9	99.0	1771
Mar-11	100.5	2.0	107.1	6974	100.8	6.0	111.5	1758	96.3	▲ 2.3	100.3	2466	105.4	3.3	110.6	2750
Apr-11	97.6	3.2	97.7	4727	96.4	3.8	103.0	1335	93.8	4.3	95.8	1702	104.0	2.7	97.6	1690
May-11	96.0	▲ 0.8	96.4	4544	91.4	▲ 3.4	104.4	1233	93.9	▲ 0.5	92.3	1724	103.7	1.9	95.3	1587
Jun-11	95.6	▲ 0.2	97.3	5440	89.5	▲ 3.0	95.6	1667	94.3	1.8	96.8	1992	104.8	2.6	96.7	1781
Jul-11	96.0	▲ 0.5	97.7	5277	91.2	▲ 2.9	97.2	1530	94.6	2.1	97.5	2004	103.8	0.8	93.0	1743
Aug-11	95.5	▲ 2.2	99.8	5033	90.9	▲ 1.3	104.1	1425	92.5	▲ 4.5	97.5	1915	104.2	0.1	99.5	1693
Sep-11	98.1	▲ 0.5	101.5	5654	93.4	▲ 2.1	100.8	1639	97.2	▲ 1.2	100.3	2166	105.4	2.9	99.9	1849
Oct-11	96.8	0.7	96.4	4928	94.9	2.5	98.2	1437	93.1	▲ 0.3	97.5	1894	105.4	0.8	93.0	1597
Nov-11	94.5	▲ 2.0	98.5	5392	91.6	▲ 3.4	100.9	1499	92.7	▲ 3.2	99.6	2172	101.3	3.0	92.3	1721
Dec-11	96.2	▲ 2.7	101.1	6329	91.9	▲ 1.2	96.6	1867	95.4	▲ 3.8	100.3	2399	103.2	▲ 0.7	99.9	2063
Jan-12	96.7	▲ 2.2	94.3	3897	93.6	▲ 3.7	106.2	1176	93.3	▲ 5.0	89.8	1362	105.2	3.8	93.0	1359
Feb-12	94.9	▲ 3.2	97.1	4921	91.2	▲ 3.4	95.6	1319	91.6	▲ 4.8	93.3	1889	103.3	▲ 0.4	93.0	1713
Mar-12	97.4	▲ 3.1	102.8	7618	95.4	▲ 5.4	105.1	1979	94.5	▲ 1.9	96.5	2733	103.3	▲ 2.0	109.7	2906
Apr-12	94.2	▲ 3.5	93.4	5099	91.1	▲ 5.6	92.9	1338	88.3	▲ 5.8	92.6	1835	104.3	0.4	95.5	1926
May-12	93.5	▲ 2.6	94.3	5322	89.2	▲ 2.4	99.8	1554	90.9	▲ 3.2	91.6	1958	102.3	▲ 1.3	96.7	1810
Jun-12	95.0	▲ 0.6	96.0	5821	90.7	1.3	94.5	1644	92.8	▲ 1.7	93.3	2267	103.4	▲ 1.3	93.0	1910
Jul-12	92.0	▲ 4.1	94.3	6157	85.3	▲ 6.4	90.3	1791	88.6	▲ 6.3	91.6	2358	104.4	0.6	97.6	2008
Aug-12	93.6	▲ 2.0	96.9	5498	86.4	▲ 5.0	92.9	1518	91.8	▲ 0.8	95.8	2135	104.2	0.0	97.6	1845
Sep-12	94.9	▲ 3.3	100.7	5690	90.2	▲ 3.5	98.2	1629	93.8	▲ 3.5	96.8	2158	102.3	▲ 3.0	99.9	1903
Oct-12	93.5	▲ 3.4	94.9	5570	90.8	▲ 4.3	95.6	1615	90.1	▲ 3.3	94.0	2115	102.2	▲ 3.1	92.5	1840
Nov-12	93.2	▲ 1.5	94.3	6191	88.3	▲ 3.6	92.9	1717	91.2	▲ 1.6	93.3	2354	100.9	▲ 0.5	93.6	2120
Dec-12	94.0	▲ 2.3	98.1	6685	87.0	▲ 5.3	86.9	1881	94.0	▲ 1.5	97.9	2601	101.4	▲ 1.7	97.6	2203
Jan-13	94.4	▲ 2.5	91.3	4184	87.6	▲ 6.4	94.5	1231	92.8	▲ 0.5	90.5	1462	103.4	▲ 1.7	88.3	1491
Feb-13	93.6	▲ 1.3	94.3	5312	85.6	▲ 6.1	90.3	1304	93.0	1.5	96.8	1994	101.9	▲ 1.4	90.1	2014
Mar-13	97.6	0.2	104.0	8522	92.2	▲ 3.3	99.8	2041	96.9	2.5	102.0	3209	103.7	0.4	104.5	3272
Apr-13	94.4	0.2	97.3	6214	87.0	▲ 4.5	95.6	1567	90.9	2.9	94.0	2219	104.5	0.1	99.0	2428
May-13	95.3	1.9	94.3	6253	85.8	▲ 3.8	87.6	1670	93.2	2.5	91.6	2335	105.8	3.5	96.7	2248
Jun-13	95.5	0.6	98.5	6679	85.5	▲ 5.8	90.3	1812	93.9	1.2	99.3	2565	107.0	3.4	97.6	2302
Jul-13	94.9	3.1	98.1	6850	85.6	0.3	89.1	1884	92.5	4.3	97.5	2531	106.7	2.2	97.6	2435
Aug-13	97.6	4.3	99.4	6217	88.9	2.8	92.4	1701	94.9	3.4	100.3	2362	109.0	4.6	98.5	2154
Sep-13	95.7	0.9	102.0	6165	88.8	▲ 1.5	99.0	1736	92.5	▲ 1.4	100.3	2411	108.6	6.2	99.0	2018
Oct-13	95.2	1.8	94.7	5878	85.9	▲ 5.4	89.2	1605	91.1	1.1	94.0	2179	108.7	6.4	97.6	2094
Nov-13	96.0	3.1	98.1	6128	85.4	▲ 3.3	88.4	1603	93.4	2.4	97.2	2436	110.4	9.5	95.4	2089
Dec-13	96.3	2.4	94.3	6662	84.8	▲ 2.6	87.1	1774	94.7	0.8	96.9	2620	111.4	9.9	93.0	2268

	Residential				Land				Detached House				Condominiums			
	Residential Property Price Index (average of fiscal year 2008=100)	change compared to year-earlier month (%)	median index (average of fiscal year 2008=100)	Number of Samples used for calculation	Residential Property Price Index (average of fiscal year 2008=100)	change compared to year-earlier month (%)	median index (average of fiscal year 2008=100)	Number of Samples used for calculation	Residential Property Price Index (average of fiscal year 2008=100)	change compared to year-earlier month (%)	median index (average of fiscal year 2008=100)	Number of Samples used for calculation	Residential Property Price Index (average of fiscal year 2008=100)	change compared to year-earlier month (%)	median index (average of fiscal year 2008=100)	Number of Samples used for calculation
Apr-08	99.4		97.1	298	106.2		104.5	171	92.1		73.5	111	(91.6)		110.9	16
May-08	104.4		106.1	311	108.2		114.2	196	100.2		95.6	97	(93.9)		87.4	18
Jun-08	107.4		104.5	382	102.3		105.0	251	114.0		109.5	104	(113.4)		105.6	27
Jul-08	101.3		104.0	410	103.1		104.4	257	98.9		90.0	136	(99.2)		128.7	17
Aug-08	104.8		104.5	360	106.0		103.4	227	104.3		118.4	113	(93.3)		96.3	20
Sep-08	99.1		99.5	310	98.1		97.4	192	103.3		106.4	103	(105.2)		174.8	15
Oct-08	102.6		104.5	385	98.9		94.1	245	107.1		110.3	125	(107.3)		56.8	15
Nov-08	99.9		99.3	309	98.2		100.4	185	102.0		112.2	102	(100.5)		63.2	22
Dec-08	95.0		90.0	391	98.0		94.7	254	90.3		77.6	118	(93.6)		151.8	19
Jan-09	100.3		99.1	254	102.8		97.6	147	96.6		100.2	96	(103.6)		100.6	11
Feb-09	94.8		94.6	236	92.2		90.2	138	96.9		95.9	86	(98.9)		74.1	12
Mar-09	91.9		96.8	398	86.0		94.0	237	98.4		110.5	141	(99.5)		49.7	20
Apr-09	99.3	▲ 0.1	104.5	301	95.7	▲ 9.9	95.7	167	103.9	12.8	96.8	112	(100.7)	(9.9)	128.7	22
May-09	93.7	▲ 10.3	104.3	261	97.6	▲ 9.8	98.4	140	88.4	▲ 11.8	102.1	104	(104.4)	(11.2)	146.4	17
Jun-09	90.2	▲ 16.0	94.0	362	90.0	▲ 12.1	95.9	226	87.7	▲ 23.1	83.6	113	(102.2)	(▲ 9.9)	155.3	23
Jul-09	93.9	▲ 7.3	92.0	351	96.8	▲ 6.1	93.4	216	90.2	▲ 8.8	85.5	112	(91.8)	(▲ 7.4)	100.3	23
Aug-09	92.6	▲ 11.6	98.2	267	88.7	▲ 16.3	87.9	152	96.1	▲ 7.9	94.8	94	(93.9)	(0.6)	168.6	21
Sep-09	95.4	▲ 3.7	91.9	292	93.1	▲ 5.1	88.7	185	97.0	▲ 2.1	102.9	83	(103.6)	(▲ 1.6)	124.2	24
Oct-09	95.5	▲ 6.9	97.8	307	99.2	0.3	93.4	177	92.8	▲ 13.4	91.7	103	(90.0)	(▲ 16.1)	91.9	27
Nov-09	92.1	▲ 7.8	92.5	313	93.0	▲ 5.3	97.2	191	90.6	▲ 11.1	84.3	102	(95.2)	(▲ 5.2)	66.3	20
Dec-09	93.2	▲ 1.9	90.8	341	88.8	▲ 9.5	87.5	223	97.6	8.2	85.1	100	(102.9)	(9.9)	176.2	18
Jan-10	90.7	▲ 9.5	85.5	218	91.4	▲ 11.1	86.7	139	90.6	▲ 6.3	89.2	68	(83.2)	(▲ 19.7)	45.3	11
Feb-10	83.8	▲ 11.6	88.8	245	85.5	▲ 7.3	91.6	137	80.7	▲ 16.7	77.4	94	(94.4)	(▲ 4.5)	79.3	14
Mar-10	93.0	1.2	91.9	361	86.3	0.4	90.4	219	96.3	▲ 2.1	101.4	116	(114.3)	(15.0)	93.2	26
Apr-10	89.3	▲ 10.1	93.0	321	84.8	▲ 11.4	81.7	183	93.5	▲ 10.1	103.3	110	(85.5)	(▲ 15.0)	114.5	28
May-10	85.7	▲ 8.5	97.9	284	83.4	▲ 14.6	93.4	172	88.9	0.5	93.5	102	(77.6)	(▲ 25.7)	122.0	10
Jun-10	91.5	1.4	95.1	363	91.6	1.8	99.2	235	90.9	3.6	92.8	103	(93.7)	(▲ 8.3)	124.2	25
Jul-10	90.6	▲ 3.6	94.0	397	89.1	▲ 8.0	92.4	246	92.1	2.1	107.7	118	(92.4)	(0.6)	88.8	33
Aug-10	90.7	▲ 2.1	95.1	347	92.5	4.4	86.3	216	84.7	▲ 11.8	106.8	105	(102.3)	(9.0)	168.2	26
Sep-10	87.5	▲ 8.3	88.7	373	79.5	▲ 14.6	81.7	226	90.5	▲ 6.8	96.7	119	(104.7)	(1.1)	133.1	28
Oct-10	88.3	▲ 7.6	99.5	352	89.8	▲ 9.5	90.0	218	84.7	▲ 8.7	99.0	111	(94.3)	(4.7)	147.3	23
Nov-10	90.5	▲ 1.7	90.9	313	88.2	▲ 5.1	91.6	187	92.7	2.3	99.8	102	(92.2)	(▲ 3.1)	78.5	24
Dec-10	86.6	▲ 7.0	91.4	437	84.5	▲ 4.8	92.0	279	89.5	▲ 8.3	92.8	127	(91.4)	(▲ 11.2)	97.6	31
Jan-11	95.0	4.7	92.6	260	92.2	0.9	94.1	165	96.1	6.1	95.1	76	(107.3)	(29.0)	131.3	19
Feb-11	88.2	5.3	99.3	249	84.9	▲ 0.7	84.3	144	90.1	11.7	92.8	87	(97.8)	(3.6)	108.3	18
Mar-11	87.9	▲ 5.5	96.9	360	86.9	0.7	95.1	211	87.9	▲ 8.7	86.3	126	(94.6)	(▲ 17.3)	119.8	23
Apr-11	86.2	▲ 3.5	86.1	274	78.4	▲ 7.5	79.4	151	84.7	▲ 9.4	87.0	108	(123.1)	(43.9)	97.6	15
May-11	85.3	▲ 0.5	87.8	304	78.4	▲ 6.0	85.4	190	90.0	1.3	87.9	102	(121.2)	(56.2)	117.1	12
Jun-11	85.6	▲ 6.5	87.7	335	78.3	▲ 14.5	82.0	213	91.1	0.2	95.2	103	(102.8)	(9.6)	87.0	19
Jul-11	93.9	3.7	93.0	353	89.8	0.8	92.1	233	93.6	1.7	99.0	101	(129.8)	(40.4)	117.8	19
Aug-11	81.6	▲ 10.0	83.6	333	77.8	▲ 15.9	86.9	209	84.3	▲ 0.5	81.2	106	(100.7)	(▲ 1.6)	54.8	18
Sep-11	85.6	▲ 2.2	86.7	335	84.7	6.5	88.7	207	85.4	▲ 5.6	83.2	112	(98.0)	(▲ 6.4)	95.4	16
Oct-11	88.0	▲ 0.4	87.8	324	86.2	▲ 4.0	82.3	212	88.5	4.5	82.7	96	(99.9)	(6.0)	110.9	16
Nov-11	85.4	▲ 5.6	85.7	307	77.4	▲ 12.3	82.0	190	89.0	▲ 4.1	99.8	99	(111.7)	(21.1)	114.9	18
Dec-11	82.1	▲ 5.2	82.5	411	76.9	▲ 9.0	84.5	239	86.8	▲ 3.0	78.5	140	(88.4)	(▲ 3.3)	52.4	32
Jan-12	84.6	▲ 11.0	85.7	221	81.1	▲ 12.1	84.0	139	83.8	▲ 12.7	75.8	69	(115.2)	(7.4)	92.0	13
Feb-12	79.0	▲ 10.5	88.3	242	74.4	▲ 12.4	75.9	136	80.1	▲ 11.1	85.1	87	(95.9)	(▲ 1.9)	115.4	19
Mar-12	88.0	0.0	108.7	448	77.8	▲ 10.5	85.4	260	92.3	5.0	111.4	126	(98.5)	(4.1)	216.9	62
Apr-12	80.8	▲ 6.3	88.8	323	72.3	▲ 7.8	81.7	189	86.6	2.3	92.8	109	(103.4)	(▲ 16.0)	98.5	25
May-12	82.2	▲ 3.6	92.0	337	77.4	▲ 1.2	87.8	208	84.1	▲ 6.5	90.5	113	(107.0)	(▲ 11.8)	97.6	16
Jun-12	81.3	▲ 5.0	87.0	363	75.9	▲ 3.1	86.7	233	88.9	▲ 2.4	95.2	113	(99.3)	(▲ 3.3)	104.7	17
Jul-12	77.1	▲ 17.9	83.6	365	71.5	▲ 20.3	81.7	238	81.6	▲ 12.8	84.1	118	(105.3)	(▲ 18.8)	106.5	9
Aug-12	85.0	4.1	88.5	371	75.7	▲ 2.7	81.7	229	90.8	7.7	98.6	126	(117.9)	(17.1)	82.1	16
Sep-12	87.3	2.0	83.0	299	79.4	▲ 6.2	82.5	190	92.9	8.7	92.8	92	(97.8)	(▲ 0.2)	113.6	17
Oct-12	79.3	▲ 9.8	86.7	411	79.0	▲ 8.4	87.7	233	76.3	▲ 13.8	84.3	145	(94.4)	(▲ 5.5)	106.5	33
Nov-12	81.5	▲ 4.6	83.6	366	72.2	▲ 6.7	77.7	236	89.9	1.1	85.1	107	(99.9)	(▲ 10.6)	110.9	23
Dec-12	78.5	▲ 4.4	81.2	409	71.9	▲ 6.5	79.8	257	78.3	▲ 9.9	76.6	130	(116.1)	(31.3)	146.2	22
Jan-13	88.5	4.6	94.0	238	80.3	▲ 0.9	87.5	161	99.5	18.7	111.4	69	(107.7)	(▲ 6.5)	88.7	8
Feb-13	79.8	1.1	80.1	259	74.5	0.1	81.7	164	80.3	0.3	78.9	81	(118.1)	(23.2)	65.2	14
Mar-13	92.6	5.3	94.6	420	80.2	3.1	88.7	238	93.2	1.0	97.8	132	(117.4)	(19.2)	232.8	50
Apr-13	86.6	7.3	90.9	315	82.8	14.6	85.0	190	86.6	▲ 0.0	89.4	108	(120.9)	(16.9)	106.5	17
May-13	83.6	1.7	86.4	356	78.8	1.8	85.8	233	86.1	2.3	93.2	106	(118.4)	(10.7)	66.6	17
Jun-13	84.6	4.0	81.3	364	76.7	1.0	77.7	220	86.4	▲ 2.8	86.8	120	(135.0)	(35.9)	85.6	24
Jul-13	88.2	14.4	85.7	451	76.9	7.6	86.5	288	95.8	17.5	106.0	147	(149.7)	(42.2)	64.8	16
Aug-13	85.8	1.0	92.0	352	75.1	▲ 0.8	89.2	217	86.8	▲ 4.4	94.8	114	(138.8)	(17.7)	128.7	21
Sep-13	83.8	▲ 4.0	93.0	376	78.4	▲ 1.3	89.9	241	87.1	▲ 6.2	105.2	118	(114.6)	(17.2)	126.9	17
Oct-13	91.1	14.8	92.1	373	87.5	10.8	87.9	234	87.1	14.0	84.7	110	(121.3)	(28.5)	135.8	29
Nov-13	88.3	8.4	90.7	351	79.5	10.1	80.5	207	90.7	0.8	96.4	121	(132.4)	(32.5)	88.7	23
Dec-13	80.4	2.4	81.5	399	75.9	5.6	78.3	239	80.1	2.3	91.3	141	(131.8)	(13.6)	67.1	19

※Due to number of samples being insufficient, numbers with parenthesis are "only advisory".

	Residential				Land				Detached House				Condominiums			
	Residential Property Price Index (average of fiscal year 2008=100)	change compared to year-earlier month (%)	median index (average of fiscal year 2008=100)	Number of Samples used for calculation	Residential Property Price Index (average of fiscal year 2008=100)	change compared to year-earlier month (%)	median index (average of fiscal year 2008=100)	Number of Samples used for calculation	Residential Property Price Index (average of fiscal year 2008=100)	change compared to year-earlier month (%)	median index (average of fiscal year 2008=100)	Number of Samples used for calculation	Residential Property Price Index (average of fiscal year 2008=100)	change compared to year-earlier month (%)	median index (average of fiscal year 2008=100)	Number of Samples used for calculation
Apr-08	102.1		100.6	1537	103.4		96.0	671	100.7		97.9	606	103.0		105.1	260
May-08	102.9		98.9	1647	103.9		103.2	791	102.9		101.1	642	97.5		90.4	214
Jun-08	105.4		104.2	1753	107.5		103.5	836	104.6		107.3	690	99.9		105.5	227
Jul-08	101.3		101.0	1812	100.1		100.2	872	101.6		101.0	706	104.8		108.6	234
Aug-08	102.5		103.3	1803	104.2		107.2	907	100.6		111.9	669	103.5		99.5	227
Sep-08	101.3		102.2	1671	101.7		100.0	783	101.5		106.3	687	96.9		88.9	201
Oct-08	102.0		99.8	1780	99.5		99.5	900	105.1		102.6	674	100.4		101.7	206
Nov-08	98.7		98.9	1579	98.5		97.7	738	99.3		102.6	632	96.5		90.4	209
Dec-08	96.7		97.7	1780	97.3		99.6	917	95.5		88.1	652	98.7		103.2	211
Jan-09	96.1		95.6	1270	95.5		96.0	571	95.6		94.7	504	100.3		96.5	195
Feb-09	94.3		95.6	1259	90.9		96.0	592	96.0		93.3	485	99.4		96.8	182
Mar-09	97.3		102.2	1917	97.3		101.1	786	96.7		93.3	775	98.9		113.3	356
Apr-09	92.9	▲ 9.1	98.9	1447	93.4	▲ 9.7	99.8	643	91.7	▲ 9.0	87.0	572	96.5	▲ 6.3	99.1	232
May-09	92.7	▲ 10.0	95.6	1291	96.8	▲ 6.8	99.8	570	89.6	▲ 13.0	90.4	535	91.2	▲ 6.4	94.2	186
Jun-09	93.9	▲ 10.8	94.9	1742	95.0	▲ 11.6	99.3	855	92.7	▲ 11.3	90.9	651	95.0	▲ 4.9	94.2	236
Jul-09	95.3	▲ 5.9	95.6	1708	94.4	▲ 5.7	96.5	796	95.0	▲ 6.5	91.5	641	99.2	▲ 5.3	105.2	271
Aug-09	94.5	▲ 7.8	100.6	1460	95.0	▲ 8.8	98.7	687	92.5	▲ 8.0	93.3	581	101.6	▲ 1.9	113.0	192
Sep-09	98.8	▲ 2.4	99.7	1623	99.8	▲ 1.9	103.7	827	96.0	▲ 5.4	94.4	588	106.2	9.6	106.3	208
Oct-09	92.2	▲ 9.6	92.6	1473	89.6	▲ 10.0	92.1	730	91.9	▲ 12.5	91.2	524	101.0	0.6	101.0	219
Nov-09	92.2	▲ 6.6	95.6	1692	89.4	▲ 9.2	93.7	803	93.0	▲ 6.4	93.6	641	98.1	1.6	104.0	248
Dec-09	94.2	▲ 2.5	94.9	1763	89.1	▲ 8.5	92.2	878	97.9	2.6	95.9	663	99.2	0.5	89.6	222
Jan-10	99.1	3.2	97.6	1171	100.2	4.9	103.7	559	96.8	1.3	83.0	400	102.2	1.9	103.7	212
Feb-10	92.1	▲ 2.4	93.6	1346	90.1	▲ 0.9	96.7	623	91.7	▲ 4.5	88.6	522	101.0	1.5	98.0	201
Mar-10	94.9	▲ 2.4	102.2	2175	91.6	▲ 5.9	98.8	973	95.9	▲ 0.8	93.3	828	103.8	5.0	105.5	374
Apr-10	95.8	3.2	98.9	1725	94.7	1.4	101.6	783	95.1	3.7	91.9	635	101.3	5.0	105.5	307
May-10	95.3	2.8	95.6	1449	96.4	▲ 0.4	101.1	730	92.9	3.7	88.6	498	99.1	8.6	98.0	221
Jun-10	92.8	▲ 1.3	92.3	1681	90.5	▲ 4.8	94.4	939	93.8	1.2	85.3	548	101.5	6.8	105.5	194
Jul-10	96.4	1.1	100.1	1852	95.0	0.6	99.8	892	96.2	1.3	97.9	675	101.9	2.8	109.3	285
Aug-10	96.1	1.7	98.9	1661	93.2	▲ 1.9	95.6	827	96.1	3.8	97.5	600	106.5	4.8	103.2	234
Sep-10	98.2	▲ 0.6	97.6	1851	94.5	▲ 5.3	92.4	909	100.8	5.0	97.9	680	101.8	▲ 4.1	103.9	262
Oct-10	95.9	4.0	94.3	1714	93.5	4.4	96.0	873	96.4	4.9	96.8	602	103.4	2.3	98.7	239
Nov-10	94.7	2.7	97.6	1847	90.4	1.1	93.8	926	95.9	3.1	101.1	656	105.8	7.9	105.5	265
Dec-10	95.3	1.1	95.6	2145	91.6	2.9	93.1	1129	96.5	▲ 1.5	97.9	735	105.4	6.2	104.0	281
Jan-11	95.0	▲ 4.1	97.6	1348	94.5	▲ 5.7	100.2	704	92.2	▲ 4.7	93.3	445	105.9	3.7	107.0	199
Feb-11	91.4	▲ 0.7	89.8	1544	89.8	▲ 0.4	90.6	755	91.4	▲ 0.3	82.8	574	97.7	▲ 3.3	94.9	215
Mar-11	94.7	▲ 0.2	94.3	2186	91.0	▲ 0.6	95.2	1048	95.5	▲ 0.4	97.0	775	105.1	1.2	104.0	363
Apr-11	91.9	▲ 4.1	92.3	1577	88.9	▲ 6.1	90.4	750	91.3	▲ 3.9	86.3	607	104.1	2.8	111.9	220
May-11	96.6	1.4	97.6	1606	98.9	2.6	97.3	821	90.2	▲ 2.9	93.2	576	111.0	12.1	111.5	209
Jun-11	95.5	2.9	96.9	1895	92.3	2.1	94.1	972	96.1	2.5	97.9	693	107.5	5.9	94.6	230
Jul-11	97.0	0.6	97.6	1807	92.1	▲ 3.1	95.4	938	99.9	3.9	101.7	626	104.8	2.8	99.5	243
Aug-11	95.2	▲ 1.0	102.9	1720	92.4	▲ 0.9	96.2	811	94.8	▲ 1.3	101.7	667	106.2	▲ 0.3	108.8	242
Sep-11	97.5	▲ 0.8	98.9	1822	93.9	▲ 0.6	99.0	935	98.5	▲ 2.4	101.7	675	107.8	5.9	98.1	212
Oct-11	95.2	▲ 0.7	95.6	1654	94.1	0.6	96.7	857	94.2	▲ 2.3	93.3	609	105.2	1.8	96.2	188
Nov-11	94.0	▲ 0.7	95.6	1766	91.1	0.7	96.0	834	93.7	▲ 2.3	91.6	700	106.9	1.0	101.0	232
Dec-11	93.4	▲ 2.0	97.3	2165	88.5	▲ 3.4	90.6	1046	95.9	▲ 0.6	92.3	857	105.3	▲ 0.1	101.7	262
Jan-12	96.7	1.8	97.6	1243	94.3	▲ 0.3	95.2	618	97.5	5.7	86.3	457	103.6	▲ 2.2	102.9	168
Feb-12	92.2	0.9	91.9	1637	87.6	▲ 2.4	88.4	788	92.3	1.0	98.5	628	108.5	11.1	98.0	221
Mar-12	95.6	0.9	100.2	2247	92.6	1.7	95.9	1056	96.5	1.0	102.6	893	103.9	▲ 1.1	102.5	298
Apr-12	92.4	0.6	94.6	1682	88.4	▲ 0.6	92.1	802	91.9	0.6	88.1	648	108.0	3.7	104.0	232
May-12	92.7	▲ 4.1	92.3	1732	88.2	▲ 10.8	92.1	888	94.2	4.4	96.5	647	105.8	▲ 4.7	94.9	197
Jun-12	90.7	▲ 5.0	94.6	1933	88.9	▲ 3.7	92.9	927	89.7	▲ 6.6	93.2	784	104.2	▲ 3.1	94.1	222
Jul-12	92.5	▲ 4.6	96.9	1942	91.7	▲ 0.4	98.3	912	91.4	▲ 8.5	91.9	773	100.8	▲ 3.8	97.2	257
Aug-12	93.5	▲ 1.8	96.0	1981	89.3	▲ 3.3	93.7	1020	95.3	0.5	104.6	760	105.6	▲ 0.6	94.2	201
Sep-12	92.7	▲ 4.9	98.2	1863	92.1	▲ 1.9	97.1	973	91.0	▲ 7.6	93.3	684	104.3	▲ 3.2	100.2	206
Oct-12	94.8	▲ 0.5	95.6	1831	92.1	▲ 2.1	94.7	977	95.8	1.7	93.3	620	103.8	▲ 1.3	96.5	234
Nov-12	94.5	0.5	96.9	1945	91.9	1.0	97.3	978	94.1	0.4	97.0	743	108.8	1.7	96.3	224
Dec-12	91.2	▲ 2.4	97.2	2239	86.3	▲ 2.6	92.1	1108	93.2	▲ 2.9	93.3	893	104.8	▲ 0.5	105.5	238
Jan-13	95.7	▲ 1.1	93.9	1341	95.9	1.7	94.5	690	92.6	▲ 5.0	92.3	471	107.6	3.8	94.2	180
Feb-13	92.0	▲ 0.3	95.6	1627	88.3	0.7	91.4	765	92.8	0.5	97.0	628	103.7	▲ 4.5	97.6	234
Mar-13	92.4	▲ 3.3	101.4	2482	88.1	▲ 4.8	96.0	1083	91.3	▲ 5.4	101.7	1014	112.5	8.2	105.5	385
Apr-13	92.8	0.4	92.3	1797	88.7	0.4	91.3	851	91.0	▲ 0.9	92.3	682	113.3	4.9	98.7	264
May-13	89.4	▲ 3.6	98.9	1849	84.8	▲ 3.8	92.1	907	89.7	▲ 4.8	93.3	708	108.1	2.2	113.0	234
Jun-13	93.4	3.0	97.5	2070	90.6	1.9	92.1	993	91.8	2.3	99.8	837	113.0	8.5	107.1	240
Jul-13	91.8	▲ 0.7	97.6	2301	88.3	▲ 3.8	91.4	1117	91.2	▲ 0.2	100.2	910	110.3	9.3	103.6	274
Aug-13	90.0	▲ 3.7	98.2	1991	85.0	▲ 4.8	92.1	987	89.9	▲ 5.7	101.7	788	114.7	8.7	99.8	216
Sep-13	88.7	▲ 4.3	98.9	1970	82.7	▲ 10.3	93.7	1036	91.0	0.0	102.6	707	105.6	1.2	105.5	227
Oct-13	90.0	▲ 5.0	93.0	1981	83.6	▲ 9.2	93.2	1022	92.5	▲ 3.4	93.3	721	108.4	4.4	98.0	238
Nov-13	87.9	▲ 6.9	92.4	1904	80.1	▲ 12.8	89.8	880	87.9	▲ 6.6	97.9	755	113.8	4.7	99.6	269
Dec-13	87.4	▲ 4.1	92.3	2207	83.4	▲ 3.3	88.3	1086	86.3	▲ 7.4	93.3	865	112.9	7.7	96.5	256

	Residential				Land				Detached House				Condominiums			
	Residential Property Price Index (average of fiscal year 2008=100)	change compared to year-earlier month (%)	median index (average of fiscal year 2008=100)	Number of Samples used for calculation	Residential Property Price Index (average of fiscal year 2008=100)	change compared to year-earlier month (%)	median index (average of fiscal year 2008=100)	Number of Samples used for calculation	Residential Property Price Index (average of fiscal year 2008=100)	change compared to year-earlier month (%)	median index (average of fiscal year 2008=100)	Number of Samples used for calculation	Residential Property Price Index (average of fiscal year 2008=100)	change compared to year-earlier month (%)	median index (average of fiscal year 2008=100)	Number of Samples used for calculation
Apr-08	104.1		102.4	2348	105.6		114.0	607	103.1		95.0	1018	103.6		100.9	723
May-08	102.6		99.4	2262	101.3		97.7	662	103.9		99.9	969	101.8		100.2	631
Jun-08	100.6		98.3	2489	98.9		97.7	699	101.6		103.2	1099	101.4		97.5	691
Jul-08	101.3		99.7	2612	97.8		97.2	688	103.4		104.7	1182	101.5		96.5	742
Aug-08	104.0		105.3	2401	105.0		100.8	627	104.3		109.5	1106	101.8		102.3	668
Sep-08	100.4		99.4	2370	100.7		101.5	674	99.9		99.4	1052	102.2		99.5	644
Oct-08	99.4		98.4	2378	99.8		102.6	619	98.3		94.4	1044	101.2		96.2	715
Nov-08	100.3		99.4	2230	102.1		99.9	574	100.9		99.9	1019	96.3		97.5	637
Dec-08	97.1		99.4	2657	96.7		96.4	737	97.2		100.8	1214	97.7		99.5	706
Jan-09	96.5		96.5	1789	98.9		98.2	456	94.6		89.3	772	97.1		106.2	561
Feb-09	95.2		97.7	1865	96.4		95.1	444	94.2		98.4	807	96.0		97.5	614
Mar-09	98.3		104.1	3143	96.8		98.9	742	98.5		105.6	1360	99.3		106.2	1041
Apr-09	94.5	▲ 9.2	93.6	2480	98.7	▲ 6.6	101.6	586	90.1	▲ 12.6	88.6	1104	97.8	▲ 5.6	97.5	790
May-09	93.8	▲ 8.6	90.7	2079	90.5	▲ 10.7	91.2	527	92.8	▲ 10.7	85.4	878	99.2	▲ 2.5	98.8	674
Jun-09	95.1	▲ 5.5	92.2	2742	91.9	▲ 7.1	92.5	775	96.0	▲ 5.5	88.2	1149	98.1	▲ 3.2	94.1	818
Jul-09	94.8	▲ 6.4	93.6	2728	92.4	▲ 5.5	94.8	689	93.9	▲ 9.1	90.2	1180	98.7	▲ 2.7	97.5	859
Aug-09	92.0	▲ 11.6	93.6	2231	90.5	▲ 13.8	91.5	592	89.9	▲ 13.8	91.2	950	97.6	▲ 4.2	100.9	689
Sep-09	96.0	▲ 4.4	98.3	2490	96.4	▲ 4.3	97.7	717	94.7	▲ 5.2	93.3	1048	98.2	▲ 3.9	105.9	725
Oct-09	91.3	▲ 8.1	93.6	2349	88.4	▲ 11.3	95.1	614	89.0	▲ 9.4	94.3	988	98.7	▲ 2.5	99.5	747
Nov-09	95.9	▲ 4.4	93.6	2614	98.8	▲ 3.3	96.9	675	92.5	▲ 8.3	91.2	1074	98.3	2.1	101.3	865
Dec-09	93.7	▲ 3.6	98.8	2713	91.0	▲ 5.9	94.5	711	94.4	▲ 2.8	99.9	1173	97.7	▲ 0.0	100.9	829
Jan-10	96.1	▲ 0.4	92.4	1807	95.6	▲ 3.3	97.7	490	94.1	▲ 0.5	80.6	716	99.8	2.8	104.2	601
Feb-10	93.5	▲ 1.9	93.6	2192	93.3	▲ 3.2	95.8	545	90.4	▲ 4.0	86.4	910	98.8	3.0	100.9	737
Mar-10	97.3	▲ 1.0	99.4	3253	93.8	▲ 3.1	94.8	768	97.1	▲ 1.4	98.4	1358	101.3	2.0	106.2	1127
Apr-10	93.1	▲ 1.5	91.8	2505	89.1	▲ 9.6	92.5	617	92.3	2.4	91.2	1066	99.0	1.2	96.5	822
May-10	93.6	▲ 0.2	93.6	2233	89.9	▲ 0.7	94.5	588	93.6	0.9	91.2	942	97.7	▲ 1.5	92.8	703
Jun-10	92.4	▲ 2.8	92.4	2763	89.8	▲ 2.3	88.6	823	91.2	▲ 5.1	91.2	1083	98.3	0.2	99.5	857
Jul-10	95.7	1.0	93.6	2796	94.8	2.6	91.2	719	94.2	0.3	91.2	1166	99.4	0.7	94.1	911
Aug-10	94.3	2.6	98.3	2510	95.8	5.9	100.2	693	91.0	1.2	97.3	1029	99.1	1.6	98.2	788
Sep-10	98.0	2.1	98.8	2735	95.6	▲ 0.8	91.2	757	97.2	2.6	100.8	1139	103.4	5.3	103.8	839
Oct-10	96.2	5.4	92.4	2614	96.4	8.9	97.7	691	93.1	4.6	91.9	1110	102.4	3.7	90.8	813
Nov-10	93.3	▲ 2.7	97.7	2716	88.6	▲ 10.4	95.4	694	90.5	▲ 2.1	99.9	1161	104.1	5.9	95.5	861
Dec-10	93.0	▲ 0.7	93.6	3132	88.5	▲ 2.8	94.1	850	93.2	▲ 1.3	98.4	1334	98.5	0.8	96.2	948
Jan-11	95.4	▲ 0.8	93.6	2015	92.4	▲ 3.4	97.7	568	93.0	▲ 1.3	87.1	788	103.0	3.2	100.9	659
Feb-11	94.8	1.5	96.5	2223	89.9	▲ 3.6	94.5	627	94.5	4.5	96.0	895	101.6	2.8	99.5	701
Mar-11	98.6	1.4	102.4	3394	93.1	▲ 0.7	103.7	918	99.2	2.1	98.4	1346	105.6	4.2	110.9	1130
Apr-11	95.0	2.1	93.6	2302	92.0	3.2	91.2	606	92.1	▲ 0.2	93.1	996	105.1	6.1	100.9	700
May-11	97.3	3.9	92.5	2302	93.0	3.5	89.6	696	96.7	3.2	91.2	955	104.0	6.5	100.9	651
Jun-11	95.6	3.5	92.4	2741	89.9	0.2	90.0	849	95.1	4.3	93.6	1127	104.7	6.5	95.5	765
Jul-11	94.6	▲ 1.2	98.3	2584	87.2	▲ 8.0	91.2	760	96.0	1.9	102.3	1132	101.1	1.7	94.6	692
Aug-11	96.9	2.7	93.6	2518	92.4	▲ 3.5	97.7	735	94.5	3.9	97.0	1014	107.5	8.5	97.8	769
Sep-11	96.4	▲ 1.6	100.6	2629	92.4	▲ 3.3	96.6	766	96.4	▲ 0.8	99.9	1127	102.5	▲ 0.9	100.9	736
Oct-11	93.7	▲ 2.7	93.6	2302	86.4	▲ 10.3	91.2	693	92.9	▲ 0.2	97.1	940	105.1	2.6	96.2	669
Nov-11	95.7	2.6	95.3	2612	89.5	1.0	91.8	767	94.8	4.7	92.7	1146	105.5	1.3	100.9	699
Dec-11	94.6	1.8	96.5	2872	87.2	▲ 1.4	90.9	860	95.8	2.8	102.3	1257	102.9	4.5	98.2	755
Jan-12	98.1	2.8	98.3	1849	94.8	2.6	100.9	522	97.7	5.1	94.3	776	103.1	0.0	100.9	551
Feb-12	96.0	1.2	93.6	2236	89.7	▲ 0.3	93.8	641	95.7	1.3	91.0	924	104.9	3.3	99.5	671
Mar-12	98.7	0.1	104.1	3474	95.8	2.9	104.2	947	95.7	▲ 3.5	96.1	1479	108.3	2.6	109.6	1048
Apr-12	95.2	0.2	93.6	2486	93.5	1.7	91.2	650	90.5	▲ 1.8	90.2	1059	106.2	1.1	97.5	777
May-12	94.3	▲ 3.1	87.7	2531	89.9	▲ 3.4	90.5	765	89.6	▲ 7.3	85.7	1010	107.6	3.5	100.9	756
Jun-12	93.0	▲ 2.7	91.0	2622	88.4	▲ 1.7	91.8	800	90.3	▲ 5.0	85.0	1092	105.2	0.5	96.2	730
Jul-12	94.1	▲ 0.5	92.4	2681	91.0	4.3	97.7	784	92.3	▲ 3.9	90.2	1145	103.6	2.5	91.4	752
Aug-12	95.2	▲ 1.8	96.5	2543	96.2	4.1	96.7	746	90.2	▲ 4.6	95.0	1071	104.9	▲ 2.4	100.2	726
Sep-12	94.9	▲ 1.6	93.6	2474	89.3	▲ 3.3	91.2	813	93.8	▲ 2.7	91.2	1014	107.1	4.5	99.4	647
Oct-12	95.4	1.9	92.4	2647	95.6	10.6	98.1	785	90.3	▲ 2.8	91.2	1074	105.2	0.1	91.4	788
Nov-12	96.7	1.1	93.7	2807	91.4	2.2	92.5	799	94.9	0.2	95.0	1177	107.0	1.4	97.5	831
Dec-12	96.5	1.9	99.4	2966	90.9	4.3	96.1	954	95.8	▲ 0.0	106.6	1249	107.7	4.7	100.9	763
Jan-13	96.4	▲ 1.7	90.1	2025	89.1	▲ 6.1	92.8	601	96.7	▲ 1.1	84.5	811	106.2	3.0	99.5	613
Feb-13	95.6	▲ 0.4	93.5	2362	90.7	1.1	91.2	640	93.6	▲ 2.2	91.2	971	105.3	0.4	96.2	751
Mar-13	99.0	0.4	102.4	3700	92.1	▲ 3.9	93.2	937	98.1	2.5	100.1	1586	109.5	1.1	107.6	1177
Apr-13	96.1	0.9	93.6	2843	92.3	▲ 1.3	97.7	718	90.8	0.4	85.4	1172	109.1	2.7	100.9	953
May-13	98.0	4.0	92.4	2645	87.1	▲ 3.1	85.3	684	96.9	8.1	91.6	1090	110.2	2.4	99.5	871
Jun-13	96.6	3.9	97.1	2844	89.6	1.3	93.3	790	94.3	4.5	91.2	1215	111.7	6.2	106.9	839
Jul-13	95.6	1.6	93.6	3046	84.4	▲ 7.2	91.2	921	95.2	3.2	93.4	1228	112.3	8.4	104.2	897
Aug-13	95.4	0.2	99.4	2691	88.8	▲ 7.7	96.7	790	92.2	2.2	100.8	1160	111.3	6.0	107.6	741
Sep-13	96.5	1.7	96.5	2704	91.5	2.5	96.6	816	93.2	▲ 0.7	96.0	1154	110.2	2.9	97.8	734
Oct-13	93.5	▲ 2.0	93.6	2644	87.6	▲ 8.3	97.7	725	90.0	▲ 0.4	86.4	1194	109.2	3.8	98.2	725
Nov-13	94.8	▲ 2.0	93.6	2824	84.8	▲ 7.3	84.7	779	93.7	▲ 1.3	94.1	1231	110.3	3.1	99.5	814
Dec-13	98.6	2.2	97.1	2990	87.6	▲ 3.6	91.2	862	99.1	3.5	100.8	1317	111.6	3.6	99.5	811

	Residential				Land				Detached House				Condominiums			
	Residential Property Price Index (average of fiscal year 2008=100)	change compared to year-earlier month (%)	median index (average of fiscal year 2008=100)	Number of Samples used for calculation	Residential Property Price Index (average of fiscal year 2008=100)	change compared to year-earlier month (%)	median index (average of fiscal year 2008=100)	Number of Samples used for calculation	Residential Property Price Index (average of fiscal year 2008=100)	change compared to year-earlier month (%)	median index (average of fiscal year 2008=100)	Number of Samples used for calculation	Residential Property Price Index (average of fiscal year 2008=100)	change compared to year-earlier month (%)	median index (average of fiscal year 2008=100)	Number of Samples used for calculation
Apr-08	103.9		110.2	596	105.4		114.9	276	103.4		104.4	270	(99.7)		103.8	50
May-08	104.8		97.1	649	106.1		99.5	301	103.9		89.7	298	(104.2)		101.4	50
Jun-08	106.8		109.1	664	109.2		106.0	338	106.1		112.1	272	(101.2)		112.1	54
Jul-08	99.3		100.0	765	102.1		99.5	377	97.9		100.9	335	(95.5)		84.1	53
Aug-08	107.1		103.4	711	104.8		99.5	349	109.3		104.6	303	(104.7)		106.3	59
Sep-08	103.1		99.9	657	105.9		105.7	336	99.9		109.9	273	(106.7)		83.8	48
Oct-08	94.4		94.5	696	89.8		93.3	358	98.2		97.5	288	(95.3)		112.5	50
Nov-08	95.6		92.5	644	97.8		83.6	297	93.1		92.6	299	(99.1)		101.2	48
Dec-08	97.3		97.5	789	93.5		103.0	450	101.2		97.1	293	(96.9)		98.1	46
Jan-09	99.2		98.0	531	100.7		99.6	272	98.5		97.1	219	(90.2)		82.4	40
Feb-09	90.9		87.9	506	90.3		90.4	257	89.0		89.5	210	(108.8)		106.3	39
Mar-09	97.5		110.0	766	94.2		105.0	341	99.9		104.6	340	(97.7)		108.0	85
Apr-09	93.7	▲ 9.8	94.2	651	95.5	▲ 9.4	96.8	312	91.0	▲ 11.9	97.1	276	(97.1)	(▲ 2.6)	80.8	63
May-09	93.7	▲ 10.6	92.5	525	96.4	▲ 9.2	91.7	263	90.4	▲ 13.0	97.1	196	(97.3)	(▲ 6.6)	104.7	66
Jun-09	100.0	▲ 6.5	102.0	688	105.3	▲ 3.6	108.3	329	95.0	▲ 10.4	97.1	295	(102.4)	(1.2)	109.4	64
Jul-09	98.7	▲ 0.7	93.3	675	103.2	1.1	99.5	322	96.3	▲ 1.6	94.9	297	(93.1)	(▲ 2.5)	97.7	56
Aug-09	95.9	▲ 10.4	101.7	569	95.2	▲ 9.2	99.2	264	97.9	▲ 10.4	97.6	252	(88.3)	(▲ 15.6)	94.8	53
Sep-09	92.5	▲ 10.2	94.8	654	86.8	▲ 18.1	91.5	316	95.8	▲ 3.7	105.3	280	(94.3)	(▲ 11.6)	98.9	58
Oct-09	95.8	1.4	92.5	618	93.5	4.1	85.8	317	97.4	▲ 0.8	89.7	245	(96.8)	(1.6)	120.3	56
Nov-09	95.9	0.3	99.9	658	96.7	▲ 1.1	89.5	317	94.2	1.2	97.1	282	(101.4)	(2.4)	119.5	59
Dec-09	97.1	▲ 0.2	97.1	772	100.5	7.5	103.2	391	95.0	▲ 6.1	94.5	316	(89.8)	(▲ 7.4)	82.4	65
Jan-10	105.0	5.9	106.2	472	109.0	8.2	107.1	237	98.8	0.4	103.8	184	(113.4)	(25.8)	122.0	51
Feb-10	98.8	8.7	102.4	584	92.0	1.8	95.6	292	100.9	13.3	102.1	232	(112.7)	(3.5)	125.5	60
Mar-10	96.5	▲ 1.0	103.6	839	91.8	▲ 2.6	99.5	405	97.7	▲ 2.2	109.1	342	(106.5)	(8.9)	106.3	92
Apr-10	96.1	2.5	99.9	620	89.5	▲ 6.4	99.5	312	99.7	9.5	104.1	245	(108.4)	(11.6)	112.9	63
May-10	96.8	3.4	98.5	560	97.5	1.2	97.8	281	95.1	5.1	97.1	217	(101.1)	(3.9)	112.2	62
Jun-10	102.4	2.5	107.0	715	98.9	▲ 6.0	103.7	363	105.3	10.9	105.7	266	(104.7)	(2.3)	110.5	86
Jul-10	99.4	0.7	107.5	853	92.9	▲ 10.0	94.2	410	99.2	3.0	104.2	274	(108.9)	(17.0)	152.5	169
Aug-10	96.7	0.8	94.7	654	89.1	▲ 6.4	93.9	361	101.7	3.9	107.1	224	(107.6)	(21.8)	119.5	69
Sep-10	100.1	8.3	97.1	707	102.1	17.7	97.4	361	97.4	1.7	99.0	264	(106.1)	(12.4)	118.7	82
Oct-10	97.0	1.3	97.3	655	93.7	0.2	96.5	332	95.1	▲ 2.4	100.9	253	(113.5)	(17.2)	113.8	70
Nov-10	99.6	3.8	101.7	748	94.6	▲ 2.2	103.0	360	100.6	6.8	101.6	309	(113.4)	(11.8)	104.7	79
Dec-10	100.8	3.9	97.1	844	96.9	▲ 3.6	94.3	466	103.9	9.4	112.1	311	(103.9)	(15.7)	111.3	67
Jan-11	95.2	▲ 9.4	93.5	557	93.6	▲ 14.1	97.3	309	96.6	▲ 2.3	89.7	207	(98.0)	(▲ 13.6)	108.8	41
Feb-11	99.0	0.2	93.4	588	88.8	▲ 3.4	88.4	299	103.3	2.4	102.0	230	(113.1)	(0.3)	99.7	59
Mar-11	100.4	4.1	100.7	830	101.1	10.2	104.8	413	99.0	1.3	101.0	333	(104.5)	(▲ 1.9)	102.2	84
Apr-11	102.6	6.8	97.2	668	101.4	13.3	92.9	329	103.2	3.5	104.9	262	(104.0)	(▲ 4.0)	96.4	77
May-11	99.8	3.1	101.0	633	99.9	2.4	106.1	333	98.4	3.5	93.4	229	(104.9)	(3.8)	103.9	71
Jun-11	100.4	▲ 2.0	90.6	776	92.8	▲ 6.2	88.4	420	106.4	1.1	99.7	279	(111.2)	(6.1)	80.8	77
Jul-11	99.5	0.1	87.9	709	94.2	1.4	86.2	387	102.9	3.7	108.3	257	(107.9)	(▲ 0.9)	80.8	65
Aug-11	100.1	3.6	92.6	596	96.2	8.0	88.5	301	100.9	▲ 0.9	100.9	243	(113.3)	(5.3)	106.3	52
Sep-11	102.4	2.2	96.2	643	100.0	▲ 2.0	99.5	360	104.2	7.0	104.6	221	(107.6)	(1.4)	99.7	62
Oct-11	101.9	5.0	95.7	616	96.1	2.6	93.9	336	104.7	10.1	109.8	226	(114.8)	(1.1)	97.6	54
Nov-11	97.2	▲ 2.4	97.5	645	92.3	▲ 2.4	99.3	308	100.5	▲ 0.1	100.9	264	(111.8)	(▲ 1.5)	111.3	73
Dec-11	102.6	1.7	92.5	837	89.6	▲ 7.6	87.1	463	111.7	7.5	118.0	311	(106.1)	(2.1)	97.3	63
Jan-12	99.1	4.1	96.2	515	94.3	0.7	101.5	290	103.5	7.1	98.6	189	(106.4)	(8.6)	108.4	36
Feb-12	93.6	▲ 5.4	92.5	591	85.4	▲ 3.9	96.4	288	99.0	▲ 4.2	89.7	238	(102.7)	(▲ 9.1)	98.9	65
Mar-12	97.6	▲ 2.8	101.7	842	90.7	▲ 10.3	103.4	430	104.2	5.3	110.6	335	(104.6)	(0.1)	107.2	77
Apr-12	100.3	▲ 2.2	90.6	661	96.0	▲ 5.3	89.5	322	100.5	▲ 2.6	95.6	279	(116.1)	(11.6)	101.0	60
May-12	96.4	▲ 3.5	87.9	667	95.2	▲ 4.7	93.9	361	94.4	▲ 4.1	93.4	260	(112.4)	(7.1)	110.5	46
Jun-12	99.9	▲ 0.4	95.3	703	91.7	▲ 1.2	93.6	364	103.7	▲ 2.6	108.4	277	(118.0)	(6.2)	102.5	62
Jul-12	96.0	▲ 3.5	89.9	786	88.8	▲ 5.7	90.9	440	98.9	▲ 3.9	100.9	281	(118.5)	(9.8)	98.9	65
Aug-12	99.3	▲ 0.8	92.5	690	93.6	▲ 2.7	93.4	360	101.1	0.2	109.5	276	(121.4)	(7.2)	101.8	54
Sep-12	100.4	▲ 2.0	93.4	609	88.9	▲ 11.1	88.4	321	107.8	3.4	109.7	234	(112.9)	(5.0)	120.3	54
Oct-12	99.0	▲ 2.8	87.9	735	95.0	▲ 1.2	90.4	404	101.3	▲ 3.2	97.1	281	(109.7)	(▲ 4.4)	105.1	50
Nov-12	97.9	0.7	89.9	720	92.3	▲ 0.0	92.1	383	97.9	▲ 2.5	95.6	283	(130.1)	(16.5)	108.0	54
Dec-12	96.4	▲ 6.1	85.9	876	88.1	▲ 1.6	87.4	489	100.9	▲ 9.7	92.6	333	(119.0)	(12.1)	102.6	54
Jan-13	98.5	▲ 0.6	83.9	554	92.4	▲ 2.0	90.8	317	103.2	▲ 0.2	85.9	191	(115.9)	(8.9)	85.7	46
Feb-13	90.9	▲ 2.8	87.9	617	83.7	▲ 1.9	82.9	321	93.6	▲ 5.4	110.6	242	(109.9)	(7.0)	86.6	54
Mar-13	100.6	3.0	109.1	990	88.4	▲ 2.5	105.0	475	108.6	4.2	111.3	410	(113.3)	(8.3)	111.3	105
Apr-13	100.1	▲ 0.2	95.3	731	92.4	▲ 3.8	98.0	376	103.3	2.7	100.9	277	(120.4)	(3.7)	107.2	78
May-13	97.5	1.2	92.5	708	90.2	▲ 5.2	88.4	377	100.5	6.5	103.1	271	(122.4)	(8.9)	90.7	60
Jun-13	98.0	▲ 2.0	91.6	759	92.7	1.1	91.5	437	98.0	▲ 5.5	97.9	258	(121.2)	(2.7)	115.4	64
Jul-13	97.5	1.6	92.5	879	86.9	▲ 2.2	92.2	482	104.3	5.5	104.6	331	(123.3)	(4.0)	118.1	66
Aug-13	98.9	▲ 0.4	91.2	745	83.5	▲ 10.8	87.9	406	110.0	8.8	115.8	285	(128.9)	(6.1)	122.8	54
Sep-13	99.7	▲ 0.7	93.6	734	85.4	▲ 4.0	93.4	383	109.1	1.2	110.6	291	(111.9)	(▲ 0.9)	115.4	60
Oct-13	96.1	▲ 3.0	89.9	765	85.8	▲ 9.7	89.0	417	101.6	0.2	99.0	286	(117.0)	(6.6)	115.4	62
Nov-13	101.8	4.0	92.7	727	85.8	▲ 7.1	88.4	356	107.7	9.9	115.8	297	(127.3)	(▲ 2.2)	112.9	74
Dec-13	93.1	▲ 3.4	92.5	824	75.9	▲ 13.9	89.5	423	99.8	▲ 1.1	108.3	338	(127.4)	(7.1)	119.5	63

※Due to number of samples being insufficient, numbers with parenthesis are "only advisory".

	Residential				Land				Detached House				Condominiums			
	Residential Property Price Index (average of fiscal year 2008=100)	change compared to year-earlier month (%)	median index (average of fiscal year 2008=100)	Number of Samples used for calculation	Residential Property Price Index (average of fiscal year 2008=100)	change compared to year-earlier month (%)	median index (average of fiscal year 2008=100)	Number of Samples used for calculation	Residential Property Price Index (average of fiscal year 2008=100)	change compared to year-earlier month (%)	median index (average of fiscal year 2008=100)	Number of Samples used for calculation	Residential Property Price Index (average of fiscal year 2008=100)	change compared to year-earlier month (%)	median index (average of fiscal year 2008=100)	Number of Samples used for calculation
Apr-08	99.8		96.7	318	101.4		95.6	157	99.6		97.8	134	(91.5)		105.3	27
May-08	99.8		94.4	353	102.2		95.0	198	96.4		90.4	131	(108.2)		106.4	24
Jun-08	104.9		107.8	345	103.2		106.2	187	107.2		115.8	134	(99.9)		111.2	24
Jul-08	101.2		104.9	411	105.2		113.6	223	95.6		91.4	160	(105.1)		106.7	28
Aug-08	106.8		108.6	361	107.2		109.4	187	104.7		94.7	144	(115.9)		116.7	30
Sep-08	101.5		94.4	293	101.1		96.7	158	101.6		92.7	117	(104.9)		79.7	18
Oct-08	102.9		94.0	378	102.3		91.4	184	103.5		92.7	172	(102.7)		88.4	22
Nov-08	94.3		96.3	357	97.4		100.8	192	91.0		97.2	142	(86.0)		91.6	23
Dec-08	90.8		94.4	352	90.6		95.3	189	91.6		89.4	135	(87.3)		99.8	28
Jan-09	94.7		104.5	270	85.3		94.1	143	101.8		108.1	111	(93.9)		121.3	16
Feb-09	108.3		109.4	249	109.3		106.2	111	107.6		117.0	118	(109.8)		90.6	20
Mar-09	97.3		94.4	389	94.8		95.6	187	99.3		112.6	172	(94.8)		82.4	30
Apr-09	96.6	▲ 3.2	94.4	303	103.4	2.0	100.5	162	89.1	▲ 10.6	84.2	112	(87.5)	(▲ 4.3)	73.2	29
May-09	94.0	▲ 5.8	94.4	285	97.6	▲ 4.5	105.2	138	89.2	▲ 7.5	77.2	120	(100.0)	(▲ 7.6)	114.4	27
Jun-09	91.4	▲ 12.9	91.3	382	82.9	▲ 19.6	83.4	208	96.0	▲ 10.5	96.6	135	(102.3)	(2.3)	119.0	39
Jul-09	93.6	▲ 7.5	89.0	364	97.2	▲ 7.6	95.6	194	90.4	▲ 5.4	85.0	143	(91.3)	(▲ 13.1)	74.9	27
Aug-09	86.1	▲ 19.4	90.2	296	90.0	▲ 16.1	85.9	150	79.8	▲ 23.8	85.7	120	(94.6)	(▲ 18.4)	98.4	26
Sep-09	94.4	▲ 7.0	94.4	310	95.4	▲ 5.7	97.3	167	94.0	▲ 7.5	98.9	119	(89.4)	(▲ 14.7)	115.8	24
Oct-09	94.0	▲ 8.6	94.4	317	91.6	▲ 10.5	88.9	183	97.1	▲ 6.2	92.7	111	(96.1)	(▲ 6.5)	84.2	23
Nov-09	89.9	▲ 4.7	94.4	308	81.4	▲ 16.4	85.3	164	96.9	6.5	96.6	120	(90.8)	(5.6)	124.8	24
Dec-09	98.5	8.4	98.2	421	93.4	3.1	94.3	218	103.1	12.5	106.5	169	(96.8)	(10.8)	114.0	34
Jan-10	89.2	▲ 5.8	87.8	276	85.3	0.0	89.0	140	90.5	▲ 11.1	91.1	110	(100.4)	(7.0)	104.4	26
Feb-10	89.3	▲ 17.6	94.4	305	83.4	▲ 23.7	97.2	166	95.2	▲ 11.5	93.3	111	(92.5)	(▲ 15.7)	133.2	28
Mar-10	91.9	▲ 5.5	97.5	406	90.5	▲ 4.5	101.9	195	93.9	▲ 5.4	95.0	172	(86.3)	(▲ 9.0)	89.7	39
Apr-10	92.9	▲ 3.9	94.4	335	85.4	▲ 17.4	91.9	174	97.5	9.4	104.6	114	(98.2)	(12.2)	112.6	47
May-10	90.1	▲ 4.1	95.2	260	88.4	▲ 9.4	93.5	124	89.1	▲ 0.1	92.7	105	(102.1)	(2.1)	94.3	31
Jun-10	97.7	6.9	97.8	360	90.8	9.6	95.6	204	103.6	7.9	106.7	124	(102.2)	(▲ 0.1)	111.2	32
Jul-10	91.6	▲ 2.1	94.4	411	83.7	▲ 13.9	96.7	236	99.7	10.2	101.0	141	(100.5)	(10.0)	83.8	34
Aug-10	91.2	5.9	94.4	331	96.7	7.5	101.3	180	82.4	3.2	92.7	120	(96.3)	(1.8)	94.3	31
Sep-10	93.2	▲ 1.3	93.5	375	87.4	▲ 8.4	94.6	211	98.4	4.6	96.7	140	(96.4)	(7.8)	83.4	24
Oct-10	89.5	▲ 4.8	91.0	351	89.6	▲ 2.1	95.7	204	89.5	▲ 7.9	91.1	119	(88.9)	(▲ 7.5)	74.6	28
Nov-10	92.4	2.9	99.2	355	88.0	8.1	105.0	208	99.2	1.3	105.4	118	(90.8)	(0.0)	95.5	29
Dec-10	90.4	▲ 8.2	94.4	373	81.6	▲ 12.6	92.3	222	100.9	▲ 2.1	98.9	119	(95.3)	(▲ 1.5)	89.3	32
Jan-11	89.9	0.8	88.8	304	82.5	▲ 3.2	90.7	168	96.9	7.2	90.4	107	(87.0)	(▲ 13.3)	68.2	29
Feb-11	83.3	▲ 6.7	86.9	314	77.6	▲ 7.0	90.1	182	88.2	▲ 7.3	82.7	109	(107.8)	(16.6)	91.6	23
Mar-11	88.8	▲ 3.4	94.4	393	89.2	▲ 1.5	89.9	201	86.3	▲ 8.2	97.9	153	(101.9)	(18.1)	105.3	39
Apr-11	95.5	2.8	89.7	315	86.5	1.3	85.4	178	107.6	10.5	98.3	114	(85.9)	(▲ 12.5)	105.3	23
May-11	87.9	▲ 2.5	87.5	321	82.4	▲ 6.8	86.1	192	91.1	2.2	85.0	108	(103.4)	(1.2)	119.0	21
Jun-11	89.2	▲ 8.7	91.3	371	87.6	▲ 3.6	94.6	219	89.9	▲ 13.2	86.5	122	(95.0)	(▲ 7.0)	112.2	30
Jul-11	87.9	▲ 4.1	94.4	350	79.6	▲ 4.9	94.6	205	92.9	▲ 6.8	102.3	120	(107.8)	(7.3)	143.7	25
Aug-11	89.2	▲ 2.1	94.4	330	85.1	▲ 12.0	90.3	186	92.8	12.7	106.6	119	(98.7)	(2.5)	83.3	25
Sep-11	88.4	▲ 5.1	87.5	339	88.5	1.2	90.1	211	87.5	▲ 11.1	95.0	110	(96.2)	(▲ 0.2)	68.1	18
Oct-11	93.6	4.6	94.4	335	88.4	▲ 1.4	98.8	183	96.7	8.0	102.7	124	(114.7)	(29.1)	106.4	28
Nov-11	94.1	1.8	94.4	370	89.0	1.1	95.3	214	97.5	▲ 0.7	95.0	127	(109.4)	(20.6)	100.7	29
Dec-11	89.9	▲ 0.5	92.5	442	82.4	1.0	95.0	257	96.7	▲ 4.2	107.6	142	(99.3)	(4.2)	77.8	43
Jan-12	93.6	4.1	88.4	263	91.3	10.7	95.6	147	94.3	▲ 2.7	88.8	87	(100.8)	(15.8)	73.2	29
Feb-12	90.3	8.3	89.6	296	92.0	18.6	93.1	156	86.5	▲ 1.9	92.2	113	(104.0)	(▲ 3.6)	98.9	27
Mar-12	91.1	2.5	96.6	423	78.4	▲ 12.0	85.0	205	95.9	11.2	100.4	151	(103.7)	(1.8)	167.5	67
Apr-12	92.8	▲ 2.8	86.9	329	92.6	7.0	89.2	185	90.7	▲ 15.8	85.0	111	(103.4)	(20.4)	87.0	33
May-12	90.9	3.4	85.0	368	86.7	5.2	91.7	212	92.9	2.0	77.2	124	(109.1)	(5.6)	87.0	32
Jun-12	88.7	▲ 0.6	87.8	386	81.8	▲ 6.6	88.9	221	91.8	2.1	104.7	136	(115.1)	(21.1)	100.7	29
Jul-12	86.6	▲ 1.5	87.3	388	76.0	▲ 4.6	85.0	235	91.8	▲ 1.2	100.5	117	(116.0)	(7.6)	90.6	36
Aug-12	91.6	2.7	88.7	355	82.1	▲ 3.5	87.7	206	99.0	6.7	98.9	127	(109.4)	(10.9)	120.9	22
Sep-12	82.4	▲ 6.8	84.7	324	78.3	▲ 11.6	86.2	207	87.9	0.4	92.7	97	(96.0)	(▲ 0.1)	95.7	20
Oct-12	86.8	▲ 7.2	86.6	358	82.5	▲ 6.7	85.0	215	89.8	▲ 7.1	91.5	108	(98.6)	(▲ 14.1)	87.0	35
Nov-12	93.6	▲ 0.5	94.4	346	84.3	▲ 5.3	91.2	187	100.7	3.3	98.9	127	(102.8)	(▲ 6.1)	87.0	32
Dec-12	89.7	▲ 0.3	91.4	416	77.7	▲ 5.7	89.0	241	99.2	2.6	108.1	137	(102.9)	(3.6)	80.1	38
Jan-13	83.8	▲ 10.5	73.7	266	80.3	▲ 12.1	76.5	157	81.1	▲ 14.1	76.5	79	(114.0)	(13.1)	72.8	30
Feb-13	87.4	▲ 3.2	84.1	337	79.9	▲ 13.2	89.2	189	91.3	5.6	86.9	117	(112.9)	(8.6)	78.7	31
Mar-13	86.0	▲ 5.5	89.5	461	74.1	▲ 5.5	88.6	272	96.0	0.0	92.3	144	(112.0)	(8.0)	121.8	45
Apr-13	89.4	▲ 3.7	85.1	408	83.3	▲ 10.1	91.4	222	91.0	0.4	77.2	153	(115.4)	(11.5)	97.0	33
May-13	88.7	▲ 2.4	83.7	396	78.7	▲ 9.2	83.1	228	93.2	0.3	92.7	134	(116.1)	(6.4)	96.1	34
Jun-13	87.7	▲ 1.1	89.5	352	79.4	▲ 3.0	91.5	216	92.1	0.4	82.0	106	(113.1)	(▲ 1.8)	94.7	30
Jul-13	93.2	7.6	89.7	407	79.8	5.0	95.0	239	104.2	13.5	105.5	136	(117.5)	(1.3)	78.3	32
Aug-13	87.5	▲ 4.5	81.7	359	78.2	▲ 4.7	85.2	220	95.2	▲ 3.9	92.7	121	(117.8)	(7.6)	89.3	18
Sep-13	89.1	8.1	92.6	337	75.3	▲ 3.8	89.2	190	97.6	11.1	91.9	120	(112.1)	16.7	76.0	27
Oct-13	89.5	3.1	85.7	367	80.4	▲ 2.5	90.5	218	95.9	6.8	83.4	123	(116.1)	(17.8)	91.9	26
Nov-13	89.8	▲ 4.1	89.7	337	81.4	▲ 3.4	90.3	193	95.5	▲ 5.2	88.1	110	(121.1)	(17.8)	87.0	34
Dec-13	90.7	1.2	92.6	421	77.7	0.0	88.1	238	100.7	1.5	101.2	152	(116.1)	(12.9)	118.1	31

※Due to number of samples being insufficient, numbers with parenthesis are only advisory.

	Residential				Land				Detached House				Condominiums			
	Residential Property Price Index (average of fiscal year 2008=100)	change compared to year-earlier month (%)	median index (average of fiscal year 2008=100)	Number of Samples used for calculation	Residential Property Price Index (average of fiscal year 2008=100)	change compared to year-earlier month (%)	median index (average of fiscal year 2008=100)	Number of Samples used for calculation	Residential Property Price Index (average of fiscal year 2008=100)	change compared to year-earlier month (%)	median index (average of fiscal year 2008=100)	Number of Samples used for calculation	Residential Property Price Index (average of fiscal year 2008=100)	change compared to year-earlier month (%)	median index (average of fiscal year 2008=100)	Number of Samples used for calculation
Apr-08	103.8		105.6	1070	100.0		106.7	435	107.0		101.6	406	103.1		98.2	229
May-08	100.9		106.5	1111	99.1		109.7	482	103.9		106.0	425	96.8		100.1	204
Jun-08	103.4		104.5	1247	100.9		100.2	562	105.2		113.3	467	104.1		101.7	218
Jul-08	102.6		100.1	1245	102.1		101.1	558	106.0		102.3	436	92.1		100.8	251
Aug-08	101.5		100.1	1055	104.6		103.8	476	98.7		102.3	412	103.4		91.9	167
Sep-08	100.9		98.3	1176	98.5		92.3	517	98.3		98.7	409	108.7		110.7	250
Oct-08	98.2		97.4	1322	101.1		98.2	537	95.9		91.9	532	98.2		96.4	253
Nov-08	97.1		100.5	1050	89.9		92.3	428	101.4		102.3	431	100.2		98.2	191
Dec-08	98.8		95.5	1164	102.9		98.5	491	94.9		91.4	463	96.9		104.0	210
Jan-09	98.6		94.0	876	103.1		99.9	371	96.0		94.4	359	94.9		87.5	146
Feb-09	97.4		95.5	880	100.1		96.6	355	93.7		87.7	364	102.9		107.1	161
Mar-09	97.8		102.0	1331	97.7		100.5	520	97.6		108.2	519	98.8		103.5	292
Apr-09	92.9	▲ 10.5	91.0	1045	93.7	▲ 6.3	86.5	417	89.7	▲ 16.1	91.4	420	100.2	▲ 2.8	95.9	208
May-09	90.4	▲ 10.4	90.9	969	85.7	▲ 13.5	88.8	378	92.3	▲ 11.2	87.7	385	94.6	▲ 2.2	98.2	206
Jun-09	91.9	▲ 11.1	89.2	1200	87.8	▲ 12.9	83.1	472	91.3	▲ 13.2	91.4	491	100.8	▲ 3.1	105.3	237
Jul-09	94.4	▲ 8.0	94.0	1242	90.9	▲ 10.9	87.7	525	93.9	▲ 11.4	102.2	509	103.8	12.7	95.9	208
Aug-09	98.1	▲ 3.3	95.5	1023	99.9	▲ 4.4	94.8	439	95.4	▲ 3.3	98.7	376	101.1	▲ 2.2	99.5	208
Sep-09	95.9	▲ 5.0	96.5	1021	90.8	▲ 7.8	89.4	437	96.8	▲ 3.0	95.0	382	103.3	▲ 5.0	111.5	202
Oct-09	95.8	▲ 2.4	91.0	1060	90.0	▲ 11.0	92.3	463	96.1	0.2	93.6	395	105.8	7.8	95.0	202
Nov-09	95.2	▲ 2.0	93.3	1138	94.7	5.3	94.5	510	93.8	▲ 7.4	95.0	429	100.3	0.1	96.4	199
Dec-09	94.1	▲ 4.7	93.3	1218	91.4	▲ 11.2	85.1	536	93.6	▲ 1.4	99.5	460	100.9	4.2	98.2	222
Jan-10	96.2	▲ 2.4	90.1	812	91.0	▲ 11.7	92.3	389	98.0	2.0	95.0	273	103.1	8.7	86.1	150
Feb-10	93.7	▲ 3.9	91.0	1009	85.2	▲ 14.9	78.5	423	94.0	0.4	108.2	368	104.8	1.9	97.1	218
Mar-10	97.6	▲ 0.2	107.3	1464	96.3	▲ 1.5	103.2	578	97.0	▲ 0.5	110.7	526	100.8	2.0	123.6	360
Apr-10	96.1	3.5	96.5	1154	86.7	▲ 7.5	86.5	477	99.4	10.8	103.1	434	104.5	4.2	96.4	243
May-10	96.6	6.9	91.0	1008	90.1	5.2	91.2	438	99.1	7.4	96.5	350	103.4	9.4	90.6	220
Jun-10	97.8	6.4	91.0	1295	91.1	3.7	86.9	631	99.6	9.1	108.5	428	107.8	6.9	95.9	236
Jul-10	99.0	5.0	95.5	1286	99.3	9.2	98.8	548	97.8	4.2	96.1	462	101.3	▲ 2.4	105.7	276
Aug-10	99.3	1.2	98.3	1255	95.4	▲ 4.6	98.1	576	98.6	3.3	102.3	427	108.1	6.9	104.0	252
Sep-10	99.7	4.0	95.5	1264	92.1	1.4	95.3	610	103.1	6.6	95.0	407	107.8	4.4	108.6	247
Oct-10	94.4	▲ 1.5	86.4	1185	86.7	▲ 3.7	86.5	552	96.6	0.5	102.3	402	106.6	0.8	80.3	231
Nov-10	99.1	4.1	96.5	1243	90.0	▲ 4.9	93.4	539	102.0	8.7	102.3	445	111.2	10.8	107.1	259
Dec-10	101.4	7.8	103.3	1380	96.8	5.9	103.8	575	101.8	8.8	106.0	499	108.7	7.7	109.8	306
Jan-11	99.3	3.1	91.0	918	93.1	2.3	92.3	459	99.1	1.2	95.0	296	114.1	10.6	111.5	163
Feb-11	98.5	5.1	91.0	1002	93.1	9.3	92.3	460	98.3	4.6	95.0	353	111.6	6.5	93.7	189
Mar-11	104.8	7.4	101.3	1475	101.5	5.4	100.8	663	101.9	5.0	103.8	506	117.1	16.2	120.5	306
Apr-11	97.0	0.9	95.5	1065	86.5	▲ 0.2	90.0	431	100.0	0.6	107.8	410	106.7	2.2	98.2	224
May-11	99.8	3.3	96.0	1022	89.4	▲ 0.8	96.8	444	102.5	3.4	102.3	383	113.9	10.1	93.7	195
Jun-11	95.1	▲ 2.8	91.0	1234	88.9	▲ 2.5	92.3	577	92.6	▲ 7.1	101.6	423	116.0	7.6	102.6	234
Jul-11	102.1	3.0	91.0	1190	91.2	▲ 8.2	95.4	550	105.9	8.2	109.6	430	115.2	13.7	78.5	210
Aug-11	99.4	0.1	94.2	1226	91.2	▲ 4.3	92.3	548	98.4	▲ 0.2	106.0	434	120.3	11.2	84.8	244
Sep-11	101.5	1.8	100.1	1237	97.3	5.7	105.7	567	100.5	▲ 2.5	108.2	451	115.4	7.1	98.2	219
Oct-11	97.0	2.8	91.0	1205	91.2	5.2	92.2	580	96.9	0.3	102.3	426	115.1	7.9	92.8	199
Nov-11	101.6	2.5	93.7	1139	93.8	4.1	98.1	553	103.6	1.6	104.5	376	116.4	4.6	94.3	210
Dec-11	102.7	1.3	100.1	1368	91.9	▲ 5.0	91.1	623	107.3	5.4	119.1	511	117.4	7.9	101.6	234
Jan-12	98.8	▲ 0.5	86.1	913	93.2	0.1	96.1	452	99.3	0.2	88.8	308	113.0	▲ 0.9	80.3	153
Feb-12	97.9	▲ 0.5	95.5	1034	88.4	▲ 5.0	89.6	489	101.0	2.8	109.6	350	114.0	2.1	98.2	195
Mar-12	105.6	0.7	103.7	1592	97.2	▲ 4.3	92.3	695	109.2	7.2	114.8	581	114.5	▲ 2.2	96.4	316
Apr-12	99.2	2.3	92.9	1162	97.8	13.0	98.1	530	94.8	▲ 5.2	98.7	387	112.5	5.4	98.2	245
May-12	97.4	▲ 2.4	95.5	1226	82.5	▲ 7.7	92.3	538	99.9	▲ 2.6	104.5	477	120.5	5.8	96.4	211
Jun-12	100.6	5.8	91.0	1286	92.0	3.5	89.0	578	98.8	6.7	100.9	463	123.5	6.5	91.9	245
Jul-12	101.8	▲ 0.2	95.5	1363	93.5	2.5	98.1	623	103.5	▲ 2.3	102.9	486	118.1	2.5	95.0	254
Aug-12	99.4	▲ 0.0	92.8	1262	93.2	2.2	98.1	598	101.0	2.6	102.3	464	114.5	▲ 4.8	89.2	200
Sep-12	102.0	0.4	101.9	1150	99.7	2.4	100.4	547	98.7	▲ 1.8	112.9	378	117.1	1.5	111.5	225
Oct-12	98.4	1.5	91.0	1333	92.2	1.2	98.1	672	97.0	0.0	99.4	416	119.2	3.6	89.2	245
Nov-12	99.3	▲ 2.2	93.3	1330	88.6	▲ 5.5	89.9	606	98.9	▲ 4.5	108.2	455	123.2	5.9	98.2	269
Dec-12	100.0	▲ 2.6	99.9	1470	91.2	▲ 0.8	96.2	730	104.0	▲ 3.1	109.6	511	117.0	▲ 0.3	93.7	229
Jan-13	98.4	▲ 0.3	86.4	959	89.7	▲ 3.7	88.0	477	100.7	1.4	95.1	315	117.1	3.6	79.4	167
Feb-13	102.7	4.9	91.0	1232	90.8	2.7	92.3	570	105.3	4.2	103.4	420	123.6	8.4	88.3	242
Mar-13	106.0	0.4	104.6	1704	97.6	0.4	95.0	720	107.1	▲ 1.9	112.6	667	126.7	10.6	107.1	317
Apr-13	103.6	4.4	98.1	1334	93.8	▲ 4.1	102.5	552	104.3	10.1	102.3	497	119.6	6.3	96.4	285
May-13	100.9	3.5	95.5	1315	92.9	12.6	96.9	610	101.9	2.0	100.9	482	120.1	▲ 0.3	92.8	223
Jun-13	104.2	3.6	100.1	1351	90.7	▲ 1.4	98.1	586	102.6	3.8	104.5	492	133.6	8.2	111.5	273
Jul-13	103.9	2.0	99.3	1552	92.2	▲ 1.4	95.1	686	104.6	1.2	112.1	566	132.3	12.1	83.9	300
Aug-13	105.5	6.1	108.6	1352	97.5	4.7	98.1	602	104.1	3.1	122.8	511	131.4	14.8	96.4	239
Sep-13	103.4	1.4	91.9	1450	93.1	▲ 6.5	91.5	685	104.5	5.9	108.2	507	128.1	9.4	102.6	258
Oct-13	102.8	4.5	97.4	1360	89.4	▲ 3.0	92.3	656	105.2	8.5	109.6	445	131.8	10.6	95.5	259
Nov-13	103.9	4.6	95.5	1373	92.0	3.7	98.4	623	105.2	6.3	97.9	490	130.8	6.1	93.7	260
Dec-13	102.8	2.7	96.8	1547	87.9	▲ 3.6	92.3	729	103.3	▲ 0.7	109.6	547	138.1	18.0	102.6	271

3-1 Tokyo including suburbs

	Residential				Land				Detached House				Condominiums			
	Residential Property Price Index (average of fiscal year 2008=100)	change compared to year-earlier month (%)	median index (average of fiscal year 2008=100)	Number of Samples used for calculation	Residential Property Price Index (average of fiscal year 2008=100)	change compared to year-earlier month (%)	median index (average of fiscal year 2008=100)	Number of Samples used for calculation	Residential Property Price Index (average of fiscal year 2008=100)	change compared to year-earlier month (%)	median index (average of fiscal year 2008=100)	Number of Samples used for calculation	Residential Property Price Index (average of fiscal year 2008=100)	change compared to year-earlier month (%)	median index (average of fiscal year 2008=100)	Number of Samples used for calculation
Apr-08	106.0		100.9	4540	106.9		101.1	1037	106.0		101.3	1631	105.3		101.8	1872
May-08	105.2		100.4	4428	110.6		111.5	1141	103.4		97.5	1639	101.8		97.0	1648
Jun-08	105.1		101.7	4936	105.9		99.1	1261	105.0		103.8	1867	104.4		101.7	1808
Jul-08	102.8		100.9	5225	102.2		102.7	1324	102.2		98.7	1953	104.5		100.7	1948
Aug-08	101.9		103.6	4539	104.1		105.1	1124	101.3		101.3	1708	100.3		101.7	1707
Sep-08	103.3		100.9	4778	103.5		103.2	1159	104.7		102.9	1782	100.4		98.0	1837
Oct-08	98.6		97.8	4775	96.9		94.9	1223	98.9		99.7	1716	100.0		100.7	1836
Nov-08	97.8		99.7	4333	96.7		98.5	1009	97.1		99.7	1664	99.8		99.6	1660
Dec-08	95.7		97.0	4732	93.8		94.9	1223	96.6		98.1	1665	96.1		97.5	1844
Jan-09	95.8		95.8	3422	93.1		86.7	810	96.9		98.1	1160	96.5		99.4	1452
Feb-09	92.1		95.6	3766	91.4		99.1	808	90.9		95.8	1412	94.5		92.4	1546
Mar-09	96.2		105.6	6583	94.9		103.2	1378	97.1		102.9	2417	96.1		109.5	2788
Apr-09	92.8	▲ 12.5	93.9	4476	88.3	▲ 17.4	94.9	1011	91.8	▲ 13.4	90.2	1563	97.1	▲ 7.8	98.7	1902
May-09	93.5	▲ 11.1	97.0	4267	90.7	▲ 18.0	100.4	1099	92.8	▲ 10.2	94.3	1490	96.7	▲ 5.0	97.0	1678
Jun-09	93.8	▲ 10.8	95.8	5632	92.4	▲ 12.8	94.9	1453	93.6	▲ 10.8	95.0	1971	95.4	▲ 8.6	98.0	2208
Jul-09	93.3	▲ 9.2	95.1	5590	91.0	▲ 11.0	97.0	1457	93.0	▲ 9.1	94.3	1944	96.3	▲ 7.9	97.0	2189
Aug-09	94.5	▲ 7.3	97.0	4435	92.7	▲ 10.9	101.1	1150	93.1	▲ 8.1	93.4	1456	97.8	▲ 2.5	101.7	1829
Sep-09	97.2	▲ 5.9	97.8	4930	95.7	▲ 7.6	99.2	1300	96.9	▲ 7.5	97.5	1643	99.2	▲ 1.3	103.3	1987
Oct-09	93.1	▲ 5.6	92.9	4920	89.6	▲ 7.5	97.3	1234	91.7	▲ 7.2	88.7	1598	97.4	▲ 2.6	96.6	2088
Nov-09	96.3	▲ 1.6	93.9	5007	92.2	▲ 4.7	94.9	1295	95.0	▲ 2.2	91.8	1600	101.0	1.1	97.3	2112
Dec-09	94.0	▲ 1.7	97.0	5336	90.4	▲ 3.6	94.9	1461	94.3	▲ 2.3	98.1	1761	98.4	2.3	99.4	2114
Jan-10	95.7	▲ 0.1	90.0	3479	91.9	▲ 1.3	92.9	905	94.7	▲ 2.2	84.8	1045	99.7	3.3	99.8	1529
Feb-10	98.1	6.5	93.9	4451	95.4	4.4	102.4	1082	97.7	7.4	91.8	1425	101.3	7.2	100.3	1944
Mar-10	99.6	3.5	100.5	6794	97.1	2.3	99.5	1607	98.9	1.9	99.1	2172	102.6	6.8	106.7	3015
Apr-10	94.4	1.7	90.0	4945	92.9	5.2	95.8	1173	89.0	▲ 3.1	85.2	1585	101.4	4.5	93.6	2187
May-10	96.6	3.3	90.7	4317	93.6	3.2	95.2	1105	94.1	1.3	90.7	1391	102.5	6.0	97.1	1821
Jun-10	96.2	2.6	93.5	5241	94.0	1.7	92.5	1446	92.2	▲ 1.5	90.2	1629	102.1	7.0	101.7	2166
Jul-10	96.5	3.3	96.0	5750	92.5	1.6	94.9	1501	92.5	▲ 0.4	93.4	1821	103.9	7.9	102.4	2428
Aug-10	97.6	3.3	97.8	4901	93.2	0.6	96.2	1305	95.2	2.2	95.9	1678	104.7	7.1	102.1	1918
Sep-10	99.5	2.3	99.0	5193	98.9	3.4	103.2	1342	98.0	1.2	99.5	1714	101.9	2.7	101.7	2137
Oct-10	97.2	4.4	95.8	4836	94.0	4.8	98.2	1259	94.2	2.7	94.3	1715	104.8	7.7	98.5	1862
Nov-10	96.6	0.3	97.8	5602	95.0	3.1	92.4	1308	95.1	0.1	95.0	1815	99.1	▲ 1.9	108.8	2479
Dec-10	98.2	4.4	97.8	5872	92.9	2.7	92.9	1503	96.9	2.7	101.3	2054	104.6	6.4	99.8	2315
Jan-11	99.6	4.1	100.9	4075	98.0	6.7	99.5	1068	99.1	4.6	94.8	1268	101.6	1.9	108.6	1739
Feb-11	98.7	0.6	97.0	4275	97.3	2.0	102.4	1065	95.2	▲ 2.5	95.0	1456	104.1	2.8	99.1	1754
Mar-11	100.3	0.8	104.0	6383	102.2	5.2	102.9	1493	94.2	▲ 4.8	97.5	2206	105.7	3.0	110.9	2684
Apr-11	98.8	4.7	97.0	4221	99.7	7.3	99.9	1087	94.1	5.7	95.0	1476	104.0	2.6	97.0	1658
May-11	96.8	0.2	95.8	4046	94.6	1.0	98.2	1022	92.5	▲ 1.6	91.8	1468	104.6	2.0	96.6	1556
Jun-11	95.7	▲ 0.5	95.0	4852	91.9	▲ 2.2	91.6	1349	92.4	0.2	96.6	1750	105.1	2.9	97.0	1753
Jul-11	96.4	▲ 0.1	97.8	4708	93.5	1.1	94.9	1240	93.9	1.5	95.6	1767	103.4	▲ 0.5	92.4	1701
Aug-11	95.7	▲ 2.0	97.8	4526	92.7	▲ 0.6	96.7	1191	91.8	▲ 3.5	96.7	1672	103.7	▲ 1.0	99.4	1663
Sep-11	97.4	▲ 2.1	99.0	5070	93.1	▲ 5.9	96.2	1343	95.4	▲ 2.6	97.5	1915	105.6	3.6	99.4	1812
Oct-11	97.6	0.5	95.0	4391	97.8	4.1	92.9	1149	92.8	▲ 1.5	97.2	1670	105.2	0.3	93.8	1572
Nov-11	94.7	▲ 1.9	97.8	4820	93.3	▲ 1.8	94.9	1236	91.9	▲ 3.3	98.8	1895	101.3	2.2	92.4	1689
Dec-11	97.1	▲ 1.1	99.7	5643	95.1	2.4	97.2	1496	95.0	▲ 2.0	99.7	2121	102.9	▲ 1.6	100.7	2026
Jan-12	96.4	▲ 3.2	92.7	3461	94.5	▲ 3.6	99.1	946	91.8	▲ 7.4	88.6	1182	104.6	2.9	92.4	1333
Feb-12	94.9	▲ 3.8	96.2	4353	93.1	▲ 4.3	99.1	1028	90.5	▲ 5.0	91.8	1648	102.8	▲ 1.2	94.7	1677
Mar-12	98.3	▲ 2.0	101.7	6777	100.7	▲ 1.5	100.7	1582	92.8	▲ 1.4	94.3	2355	102.9	▲ 2.7	110.4	2840
Apr-12	95.9	▲ 2.9	93.1	4524	95.9	▲ 3.8	90.8	1055	88.9	▲ 5.4	93.4	1592	104.1	0.1	97.0	1877
May-12	95.1	▲ 1.7	94.6	4696	94.0	▲ 0.6	97.6	1242	90.9	▲ 1.8	91.8	1687	102.2	▲ 2.3	96.6	1767
Jun-12	95.0	▲ 0.7	94.6	5107	92.7	0.9	93.2	1300	91.8	▲ 0.7	92.8	1934	102.4	▲ 2.5	93.3	1873
Jul-12	93.3	▲ 3.2	95.0	5364	89.6	▲ 4.2	90.8	1384	88.7	▲ 5.6	91.8	2013	104.3	0.9	97.0	1967
Aug-12	93.6	▲ 2.2	97.4	4801	90.5	▲ 2.4	97.9	1158	89.6	▲ 2.4	95.0	1829	103.4	▲ 0.3	97.0	1814
Sep-12	96.5	▲ 0.9	99.7	4956	96.2	3.3	103.2	1255	93.0	▲ 2.5	95.0	1841	102.3	▲ 3.2	101.2	1860
Oct-12	94.2	▲ 3.5	97.0	4831	93.2	▲ 4.7	99.1	1247	89.7	▲ 3.4	95.0	1786	101.7	▲ 3.3	92.4	1798
Nov-12	92.9	▲ 1.9	93.9	5445	90.4	▲ 3.2	90.0	1340	89.1	▲ 3.0	91.2	2035	100.4	▲ 0.9	94.7	2070
Dec-12	95.6	▲ 1.5	97.8	5840	94.3	▲ 0.9	88.8	1444	92.5	▲ 2.6	97.5	2246	101.8	▲ 1.1	99.4	2150
Jan-13	94.2	▲ 2.3	91.9	3694	87.7	▲ 7.3	94.9	977	92.1	0.4	90.2	1268	103.2	▲ 1.3	89.2	1449
Feb-13	95.5	0.7	93.9	4727	95.0	2.1	94.9	1027	91.7	1.3	94.3	1725	101.6	▲ 1.2	90.1	1975
Mar-13	98.2	▲ 0.2	101.7	7611	97.0	▲ 3.6	98.2	1590	95.0	2.4	99.7	2819	103.1	0.3	105.4	3202
Apr-13	95.4	▲ 0.5	97.0	5497	92.3	▲ 3.8	94.1	1215	90.0	1.2	92.8	1922	103.8	▲ 0.3	99.4	2360
May-13	95.9	0.8	93.9	5496	89.2	▲ 5.1	90.2	1277	92.4	1.7	91.2	2014	105.5	3.2	97.0	2205
Jun-13	96.5	1.5	97.8	5886	89.2	▲ 3.7	94.1	1412	93.4	1.8	98.1	2211	106.9	4.4	98.9	2263
Jul-13	96.2	3.2	97.8	6018	91.0	1.6	90.8	1436	92.1	3.9	96.6	2196	106.6	2.2	99.4	2386
Aug-13	98.5	5.2	99.0	5417	94.0	3.9	94.9	1271	93.5	4.3	99.7	2046	108.8	5.2	100.3	2100
Sep-13	97.4	0.9	100.9	5419	94.7	▲ 1.5	98.9	1356	92.1	▲ 0.9	97.5	2083	108.8	6.4	99.4	1980
Oct-13	97.8	3.9	96.8	5099	94.4	1.3	94.9	1190	92.1	2.8	94.3	1866	107.6	5.8	97.0	2043
Nov-13	97.0	4.4	97.0	5386	91.4	1.2	89.8	1247	91.5	2.6	95.3	2099	110.4	10.0	97.0	2040
Dec-13	97.4	1.9	96.2	5791	89.3	▲ 5.2	86.7	1363	93.8	1.4	95.9	2209	111.6	9.6	94.7	2219

	Residential				Land				Detached House				Condominiums			
	Residential Property Price Index (average of fiscal year 2008=100)	change compared to year-earlier month (%)	median index (average of fiscal year 2008=100)	Number of Samples used for calculation	Residential Property Price Index (average of fiscal year 2008=100)	change compared to year-earlier month (%)	median index (average of fiscal year 2008=100)	Number of Samples used for calculation	Residential Property Price Index (average of fiscal year 2008=100)	change compared to year-earlier month (%)	median index (average of fiscal year 2008=100)	Number of Samples used for calculation	Residential Property Price Index (average of fiscal year 2008=100)	change compared to year-earlier month (%)	median index (average of fiscal year 2008=100)	Number of Samples used for calculation
Apr-08	103.8		100.1	963	107.5		99.4	369	101.2		96.8	406	101.1		103.4	188
May-08	103.5		95.8	1021	106.1		105.5	437	101.9		95.8	418	99.0		88.9	166
Jun-08	102.5		106.1	1114	106.2		102.7	462	100.3		105.6	472	100.5		107.0	180
Jul-08	101.2		100.1	1155	100.0		99.1	517	100.8		102.3	459	107.5		111.2	179
Aug-08	103.4		105.4	1160	104.6		105.5	528	101.9		109.7	463	105.6		96.4	169
Sep-08	101.5		101.6	1043	106.2		102.9	452	99.1		104.2	436	96.3		86.7	155
Oct-08	101.5		102.7	1118	96.6		93.4	499	107.0		109.7	453	96.9		100.1	166
Nov-08	98.0		100.1	1034	97.8		100.5	437	98.3		99.4	426	97.1		89.7	171
Dec-08	98.5		95.8	1034	99.4		95.3	506	97.6		94.1	378	98.8		103.8	150
Jan-09	97.1		95.2	806	95.1		98.9	326	97.8		98.2	321	99.8		94.9	159
Feb-09	94.5		97.0	797	89.0		96.3	337	96.7		90.0	321	101.4		103.0	139
Mar-09	98.3		100.2	1259	95.2		100.5	451	99.9		94.1	508	99.5		114.9	300
Apr-09	90.9	▲ 12.4	94.0	936	91.3	▲ 15.0	100.5	378	88.6	▲ 12.4	85.9	362	97.9	▲ 3.2	97.5	196
May-09	95.2	▲ 8.0	95.5	844	100.4	▲ 5.4	100.5	333	92.9	▲ 8.9	92.5	364	89.8	▲ 9.3	94.9	147
Jun-09	92.9	▲ 9.4	94.0	1159	95.3	▲ 10.3	102.3	509	90.9	▲ 9.4	85.3	456	93.4	▲ 7.0	94.9	194
Jul-09	96.9	▲ 4.3	92.8	1116	97.7	▲ 2.2	96.8	460	95.4	▲ 5.3	89.2	423	99.5	▲ 7.5	103.5	233
Aug-09	94.6	▲ 8.6	99.7	956	91.9	▲ 12.2	100.5	408	95.8	▲ 6.0	94.1	390	98.3	▲ 7.0	103.4	158
Sep-09	97.2	▲ 4.3	100.1	1038	97.8	▲ 7.9	104.2	487	94.6	▲ 4.5	96.8	392	104.7	8.8	113.4	159
Oct-09	92.8	▲ 8.6	95.2	939	88.0	▲ 8.9	92.8	419	94.6	▲ 11.6	94.1	341	98.0	1.1	102.3	179
Nov-09	90.9	▲ 7.2	91.0	1088	86.6	▲ 11.5	89.3	455	91.7	▲ 6.8	94.1	430	97.6	0.5	103.8	203
Dec-09	94.1	▲ 4.5	91.5	1146	88.3	▲ 11.2	94.1	520	97.8	0.2	93.1	442	99.0	0.3	85.4	184
Jan-10	97.3	0.3	94.8	788	99.0	4.1	107.9	347	93.4	▲ 4.5	84.0	262	102.3	2.5	102.3	179
Feb-10	91.4	▲ 3.3	92.1	906	88.1	▲ 0.9	101.6	380	91.0	▲ 5.8	86.1	356	102.4	1.0	95.6	170
Mar-10	96.5	▲ 1.9	100.1	1480	94.4	▲ 0.9	104.2	599	95.9	▲ 4.0	90.0	562	103.5	4.0	103.8	319
Apr-10	97.6	7.4	97.0	1179	96.1	5.3	106.9	485	96.5	8.9	87.2	437	103.5	5.7	103.8	257
May-10	92.9	▲ 2.4	91.2	934	91.9	▲ 8.5	100.9	424	90.8	▲ 2.3	93.5	328	102.2	13.8	98.2	182
Jun-10	92.5	▲ 0.4	91.6	1084	90.9	▲ 4.6	102.2	566	92.5	1.7	85.1	358	100.6	7.7	103.8	160
Jul-10	94.1	▲ 2.9	97.0	1249	91.8	▲ 6.1	103.7	539	93.6	▲ 1.9	99.9	476	102.0	2.5	107.5	234
Aug-10	95.6	1.1	97.0	1098	91.4	▲ 0.5	96.8	487	95.5	▲ 0.2	94.1	417	107.1	9.0	100.6	194
Sep-10	95.7	▲ 1.5	95.5	1146	91.8	▲ 6.1	95.3	491	97.0	2.6	97.4	457	103.4	▲ 1.2	99.7	198
Oct-10	94.4	1.8	96.7	1111	89.7	1.9	97.1	498	95.2	0.6	94.1	411	104.7	6.8	97.1	202
Nov-10	93.4	2.8	97.0	1191	90.0	4.0	96.8	513	91.3	▲ 0.4	98.2	457	109.9	12.6	102.3	221
Dec-10	95.0	1.0	94.8	1374	89.8	1.7	100.5	670	96.4	▲ 1.5	98.2	482	107.6	8.7	100.4	222
Jan-11	96.2	▲ 1.1	94.0	883	95.5	▲ 3.5	107.9	416	92.9	▲ 0.6	87.4	290	106.8	4.4	106.7	177
Feb-11	92.4	1.1	91.0	989	87.3	▲ 0.9	91.9	441	92.6	1.7	85.9	375	106.3	3.8	98.6	173
Mar-11	92.3	▲ 4.3	91.0	1365	86.2	▲ 8.7	91.6	547	93.3	▲ 2.7	90.0	522	104.6	1.0	102.3	296
Apr-11	93.4	▲ 4.3	92.8	1030	88.8	▲ 7.7	93.0	446	93.9	▲ 2.7	89.2	401	103.7	0.2	114.2	183
May-11	95.6	2.9	97.0	1053	98.6	7.3	101.2	485	88.9	▲ 2.1	92.1	392	108.3	6.0	103.0	176
Jun-11	98.5	6.5	94.5	1223	98.4	8.3	100.5	569	96.2	4.0	94.1	457	108.0	7.4	93.4	197
Jul-11	93.2	▲ 0.9	95.6	1142	89.4	▲ 2.6	102.7	539	93.3	▲ 0.4	96.4	400	105.4	3.4	96.3	203
Aug-11	94.8	▲ 0.8	102.0	1143	93.7	2.6	98.3	472	92.1	▲ 3.6	101.5	468	108.0	0.9	103.8	203
Sep-11	97.7	2.0	97.0	1178	94.2	2.6	97.0	554	97.9	0.9	100.5	443	108.1	4.5	96.4	181
Oct-11	93.1	▲ 1.4	92.6	1098	91.5	1.9	97.9	520	91.4	▲ 4.0	90.0	418	105.6	0.9	96.0	160
Nov-11	93.4	▲ 0.0	94.1	1132	90.4	0.4	95.3	481	91.3	0.0	85.1	465	109.2	▲ 0.7	102.2	186
Dec-11	93.0	▲ 2.2	95.5	1414	85.7	▲ 4.6	94.2	606	95.4	▲ 1.0	86.1	588	108.2	0.5	100.1	220
Jan-12	98.1	1.9	95.5	810	97.0	1.6	102.9	369	97.3	4.8	81.0	300	104.1	▲ 2.5	96.4	141
Feb-12	93.4	1.2	91.0	1051	91.2	4.5	89.3	455	90.4	▲ 2.3	95.2	414	109.0	2.5	100.3	182
Mar-12	95.0	2.9	98.8	1516	93.7	8.8	100.5	628	94.0	0.8	97.0	635	103.5	▲ 1.0	96.4	253
Apr-12	94.8	1.5	94.3	1106	93.7	5.6	93.4	476	89.8	▲ 4.3	85.9	444	113.6	9.6	102.3	186
May-12	90.8	▲ 5.0	91.0	1107	84.0	▲ 14.8	89.3	502	92.2	3.7	93.1	440	107.1	▲ 1.2	93.4	165
Jun-12	90.9	▲ 7.8	94.1	1243	90.5	▲ 8.0	96.8	533	87.8	▲ 8.8	90.0	523	106.6	▲ 1.3	92.7	187
Jul-12	92.4	▲ 0.9	94.5	1289	93.2	4.3	101.5	558	89.3	▲ 4.3	90.0	514	102.5	▲ 2.7	95.6	217
Aug-12	92.8	▲ 2.1	95.8	1207	90.4	▲ 3.6	92.5	542	92.4	0.3	94.1	499	103.9	▲ 3.8	92.9	166
Sep-12	93.4	▲ 4.4	96.4	1202	95.6	1.5	97.5	602	88.5	▲ 9.5	96.6	437	106.3	▲ 1.7	98.3	163
Oct-12	98.0	5.2	95.8	1170	102.0	11.5	100.8	578	92.2	0.8	97.6	408	101.7	▲ 3.7	88.9	184
Nov-12	97.3	4.2	100.1	1269	97.4	7.8	104.4	575	95.1	4.1	96.8	512	107.6	▲ 1.4	88.9	182
Dec-12	91.5	▲ 1.6	97.0	1418	89.2	4.1	96.8	633	90.6	▲ 5.0	94.1	592	105.1	▲ 2.8	103.8	193
Jan-13	96.8	▲ 1.2	93.5	880	98.5	1.6	99.7	416	92.2	▲ 5.3	93.1	314	106.7	2.5	90.0	150
Feb-13	93.7	0.2	100.1	1037	88.6	▲ 2.9	93.0	418	93.5	3.5	102.9	419	107.3	▲ 1.6	96.6	200
Mar-13	93.9	▲ 1.1	101.8	1614	91.6	▲ 2.3	100.5	600	90.6	▲ 3.6	98.2	699	112.9	9.0	105.3	315
Apr-13	96.5	1.8	94.0	1199	96.1	2.5	95.5	521	91.8	2.3	93.3	457	114.4	0.6	96.4	221
May-13	91.8	1.1	100.6	1225	89.4	6.4	99.3	529	89.6	▲ 2.8	93.3	505	110.0	2.8	111.2	191
Jun-13	96.1	5.7	101.9	1355	99.9	10.4	100.7	564	89.1	1.6	97.4	585	114.2	7.1	107.9	206
Jul-13	95.1	2.9	96.9	1545	94.0	0.9	92.3	686	91.6	2.6	97.0	620	112.6	9.9	102.3	239
Aug-13	93.6	0.8	100.1	1301	90.8	0.5	97.4	588	91.5	▲ 1.0	102.3	533	113.8	9.5	98.2	180
Sep-13	90.4	▲ 3.2	100.1	1291	87.1	▲ 8.8	96.7	615	89.7	1.3	100.1	494	106.4	0.0	98.2	182
Oct-13	92.1	▲ 6.0	95.8	1248	89.5	▲ 12.3	96.8	566	89.9	▲ 2.4	94.1	486	112.2	10.3	99.0	196
Nov-13	92.2	▲ 5.3	95.2	1218	90.0	▲ 7.5	90.7	478	87.5	▲ 8.0	93.9	506	114.4	6.4	96.9	234
Dec-13	92.4	0.9	94.0	1394	93.3	4.6	96.8	613	86.8	▲ 4.1	93.3	573	113.8	8.2	97.5	208

	Residential				Land				Detached House				Condominiums			
	Residential Property Price Index (average of fiscal year 2008=100)	change compared to year-earlier month (%)	median index (average of fiscal year 2008=100)	Number of Samples used for calculation	Residential Property Price Index (average of fiscal year 2008=100)	change compared to year-earlier month (%)	median index (average of fiscal year 2008=100)	Number of Samples used for calculation	Residential Property Price Index (average of fiscal year 2008=100)	change compared to year-earlier month (%)	median index (average of fiscal year 2008=100)	Number of Samples used for calculation	Residential Property Price Index (average of fiscal year 2008=100)	change compared to year-earlier month (%)	median index (average of fiscal year 2008=100)	Number of Samples used for calculation
Apr-08	106.1		104.2	1982	110.8		126.8	447	103.8		95.5	860	103.3		99.7	675
May-08	101.9		99.0	1878	98.5		95.3	475	104.4		99.1	816	101.5		99.7	587
Jun-08	100.3		99.2	2042	96.4		92.4	508	102.6		106.2	890	101.3		98.4	644
Jul-08	100.6		99.7	2194	98.4		98.2	508	101.2		104.6	989	102.0		96.4	697
Aug-08	104.0		104.7	2005	105.6		101.1	441	104.3		104.6	934	101.3		101.4	630
Sep-08	99.1		98.1	1978	102.1		102.8	490	97.1		99.3	876	101.5		99.7	612
Oct-08	100.2		97.5	1960	99.2		101.0	464	99.7		93.7	835	102.2		98.4	661
Nov-08	100.3		99.7	1879	104.4		101.4	429	99.7		96.4	861	96.8		98.4	589
Dec-08	98.6		99.7	2186	98.0		94.1	529	99.3		103.7	1006	97.6		99.7	651
Jan-09	96.2		98.6	1481	97.6		98.2	345	94.2		90.9	613	97.8		106.3	523
Feb-09	94.6		97.0	1541	93.4		91.8	322	94.6		99.8	644	95.5		96.4	575
Mar-09	97.9		102.6	2678	96.0		97.0	560	98.1		106.3	1155	99.6		105.7	963
Apr-09	93.3	▲ 12.1	94.2	2071	93.9	▲ 15.2	109.7	429	90.2	▲ 13.0	89.9	908	98.1	▲ 5.0	97.0	734
May-09	92.5	▲ 9.3	88.6	1724	84.3	▲ 14.4	82.3	370	92.9	▲ 11.0	85.0	719	98.9	▲ 2.5	99.7	635
Jun-09	94.3	▲ 6.0	91.4	2282	88.8	▲ 8.0	92.4	570	96.5	▲ 5.9	89.1	938	98.2	▲ 3.1	94.0	774
Jul-09	95.2	▲ 5.4	94.2	2294	91.2	▲ 7.4	98.2	506	94.4	▲ 6.8	90.0	985	99.6	▲ 2.4	98.4	803
Aug-09	91.8	▲ 11.8	94.2	1847	87.7	▲ 16.9	90.7	428	91.1	▲ 12.7	90.9	779	97.6	▲ 3.6	99.7	640
Sep-09	96.3	▲ 2.9	98.6	2064	97.7	▲ 4.3	102.8	524	93.7	▲ 3.6	95.5	866	98.9	▲ 2.6	105.6	674
Oct-09	90.7	▲ 9.4	96.4	1977	87.7	▲ 11.6	94.1	457	87.9	▲ 11.9	90.9	820	98.8	▲ 3.3	102.2	700
Nov-09	96.6	▲ 3.7	94.2	2153	100.4	▲ 3.9	94.4	474	93.3	▲ 6.4	90.9	878	98.0	1.3	99.7	801
Dec-09	94.4	▲ 4.3	98.6	2310	94.3	▲ 3.7	95.8	533	93.0	▲ 6.3	99.1	1014	97.6	▲ 0.0	99.7	763
Jan-10	95.7	▲ 0.5	91.4	1528	94.4	▲ 3.3	95.3	373	93.8	▲ 0.4	80.2	591	99.8	2.0	103.5	564
Feb-10	93.6	▲ 1.1	93.1	1865	92.9	▲ 0.5	93.6	423	90.4	▲ 4.5	81.9	755	99.2	3.9	103.0	687
Mar-10	97.1	▲ 0.9	99.7	2747	92.3	▲ 3.9	93.6	576	97.0	▲ 1.1	94.6	1124	102.1	2.6	106.3	1047
Apr-10	92.4	▲ 1.0	91.4	2094	85.3	▲ 9.2	90.1	453	92.3	2.3	94.3	876	99.5	1.4	96.4	765
May-10	93.8	1.5	91.4	1873	88.6	5.1	95.3	430	94.1	1.3	90.9	789	98.3	▲ 0.6	92.4	654
Jun-10	91.9	▲ 2.5	91.4	2297	89.1	0.4	86.6	607	89.9	▲ 6.8	91.8	881	98.4	0.3	99.7	809
Jul-10	97.5	2.5	93.1	2323	98.0	7.5	93.9	523	95.7	1.4	90.0	948	99.9	0.3	93.0	852
Aug-10	94.8	3.3	98.6	2110	94.9	8.1	105.1	527	91.7	0.7	95.5	859	100.3	2.8	98.7	724
Sep-10	98.5	2.4	99.2	2270	96.0	▲ 1.7	96.6	521	97.3	3.9	100.0	962	104.2	5.4	105.0	787
Oct-10	98.0	8.0	92.6	2204	97.9	11.7	101.1	523	95.6	8.8	91.8	921	102.7	3.9	89.9	760
Nov-10	94.1	▲ 2.6	96.3	2288	87.8	▲ 12.6	92.8	513	91.7	▲ 1.8	99.1	965	104.6	6.7	96.4	810
Dec-10	94.0	▲ 0.4	94.2	2610	89.5	▲ 5.2	93.0	600	94.4	1.5	99.3	1122	98.5	0.9	95.5	888
Jan-11	96.6	0.9	93.1	1695	91.4	▲ 3.2	101.3	426	95.8	2.1	86.4	662	103.7	4.0	99.7	607
Feb-11	95.7	2.3	95.8	1857	87.3	▲ 6.1	91.0	475	97.0	7.3	99.1	738	102.9	3.7	99.7	644
Mar-11	99.5	2.5	99.7	2835	94.6	2.5	104.0	682	100.0	3.1	95.5	1117	105.6	3.4	109.8	1036
Apr-11	97.1	5.1	95.8	1920	95.3	11.8	87.8	426	93.1	0.8	90.9	843	106.5	7.0	101.7	651
May-11	98.6	5.1	93.6	1927	93.6	5.7	86.6	525	98.1	4.3	90.9	797	105.3	7.1	102.4	605
Jun-11	96.5	5.0	93.1	2305	89.6	0.6	89.2	637	95.7	6.5	93.2	957	106.7	8.4	96.4	711
Jul-11	95.6	▲ 1.9	99.7	2143	89.9	▲ 8.2	91.2	554	95.9	0.2	104.1	951	102.2	2.3	95.5	638
Aug-11	99.6	5.0	94.2	2097	99.4	4.8	98.2	525	94.8	3.4	99.1	852	108.0	7.7	96.6	720
Sep-11	95.7	▲ 2.9	99.2	2204	89.2	▲ 7.1	95.3	593	96.5	▲ 0.8	99.1	930	102.9	▲ 1.3	97.7	681
Oct-11	94.5	▲ 3.5	93.1	1938	85.9	▲ 12.2	90.1	517	94.0	▲ 1.7	98.2	789	106.1	3.3	95.6	632
Nov-11	96.7	2.8	94.2	2162	89.3	1.8	93.0	556	96.0	4.7	92.0	950	106.0	1.4	101.1	656
Dec-11	95.6	1.7	97.2	2402	88.8	▲ 0.7	89.0	638	96.4	2.1	99.1	1052	102.9	4.5	97.7	712
Jan-12	98.9	2.4	99.2	1557	94.1	3.0	106.8	384	99.4	3.8	90.9	651	103.8	0.1	101.6	522
Feb-12	97.7	2.0	94.2	1897	90.4	3.6	93.9	501	98.0	1.1	94.6	765	105.9	2.9	99.7	631
Mar-12	99.5	▲ 0.0	104.2	2922	94.1	▲ 0.5	105.6	731	97.7	▲ 2.3	99.1	1213	109.7	3.9	110.7	978
Apr-12	95.8	▲ 1.3	93.5	2093	90.6	▲ 4.9	87.1	485	93.2	0.1	90.9	890	106.4	▲ 0.1	98.4	718
May-12	95.6	▲ 3.0	89.7	2097	90.2	▲ 3.7	89.5	572	91.1	▲ 7.2	85.9	817	108.4	3.0	99.7	708
Jun-12	95.5	▲ 1.1	91.4	2220	91.5	2.0	92.4	611	92.8	▲ 3.1	86.4	909	106.0	▲ 0.7	95.7	700
Jul-12	93.5	▲ 2.2	91.4	2255	87.8	▲ 2.3	95.3	566	92.7	▲ 3.4	88.7	980	104.3	2.1	91.7	709
Aug-12	96.4	▲ 3.2	96.4	2130	95.5	▲ 3.9	97.1	552	92.2	▲ 2.7	94.6	899	106.2	▲ 1.6	101.0	679
Sep-12	95.8	0.1	93.6	2078	87.9	▲ 1.5	89.5	616	95.3	▲ 1.2	90.0	859	108.8	5.8	100.7	603
Oct-12	95.0	0.5	92.0	2189	91.9	7.0	92.4	561	91.2	▲ 3.0	91.8	892	106.7	0.6	91.7	736
Nov-12	97.5	0.9	94.4	2347	87.0	▲ 2.6	92.5	572	97.5	1.5	95.5	995	109.0	2.8	97.7	780
Dec-12	97.8	2.3	99.7	2459	91.4	2.9	97.0	695	97.3	1.0	104.6	1038	108.5	5.4	99.7	726
Jan-13	96.3	▲ 2.7	91.4	1681	83.1	▲ 11.7	88.8	428	99.2	▲ 1.0	85.0	670	108.0	4.0	98.4	583
Feb-13	96.7	▲ 1.0	94.2	1967	89.4	▲ 1.1	92.7	458	95.4	▲ 2.6	93.2	814	106.2	0.3	96.4	695
Mar-13	99.8	0.3	100.6	3160	92.4	▲ 1.8	95.3	695	98.9	1.2	96.8	1353	110.2	0.5	106.3	1112
Apr-13	96.5	0.7	91.4	2408	89.8	▲ 0.9	96.2	552	92.3	▲ 0.9	83.2	954	109.5	2.9	102.1	902
May-13	100.7	5.3	93.1	2208	89.7	▲ 0.6	83.7	512	99.6	9.3	93.2	893	111.8	3.1	99.7	803
Jun-13	97.6	2.1	95.3	2381	87.2	▲ 4.7	91.2	586	96.6	4.1	90.0	996	113.3	6.9	105.7	799
Jul-13	98.6	5.5	94.2	2520	86.8	▲ 1.1	86.6	671	98.9	6.7	95.5	1001	112.7	8.0	104.2	848
Aug-13	96.2	▲ 0.3	99.7	2230	87.6	▲ 8.3	92.4	586	93.6	1.5	103.7	970	112.0	5.4	108.0	674
Sep-13	99.4	3.8	98.6	2214	95.8	9.0	94.4	591	95.4	0.1	95.5	936	111.0	2.0	98.4	687
Oct-13	96.1	1.1	93.1	2188	90.6	▲ 1.4	98.2	523	91.9	0.8	85.5	984	110.6	3.6	99.7	681
Nov-13	96.6	▲ 0.9	93.1	2370	86.4	▲ 0.6	85.6	572	95.2	▲ 2.4	90.9	1028	111.3	2.2	99.0	770
Dec-13	100.2	2.4	95.8	2471	88.6	▲ 3.1	86.6	612	100.8	3.5	100.0	1095	112.0	3.2	98.4	764