

# Strengthening food supply capabilities

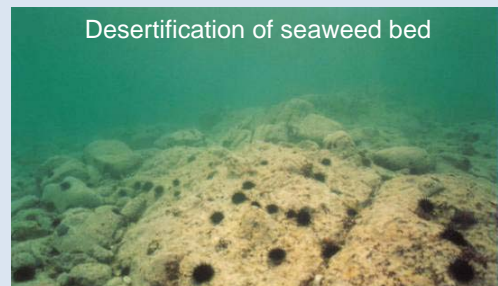
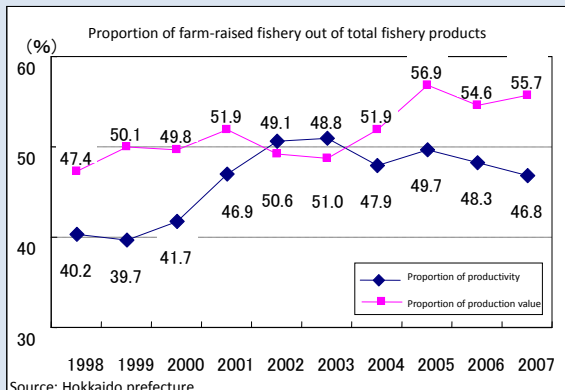
Creating foster environment in the marine area, promoting high sanitary management at the fishing port

We are promoting to ensure the growing environment for the rich fishery and plant at the seaweed bed and tidelands, to develop the large-scale fishery for improving productivity of the fishery resources with measures of recovery and the fishery resources management.

And we are promoting the high sanitary management and upgrading the fishery distributing function for enhancing the availability of marine products at the fishing port as a base of production and distribution.

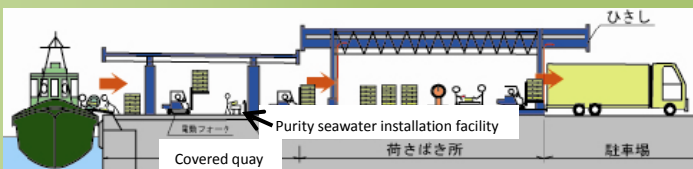
## Creating the foster environment at the marine area which growing the fishery resources

It is maintaining productivity of the target fishery at current level by acting the resource control, preservation and creating the seaweed bed and tidelands, developing the large-scale fishery, improving the fishing port.



## Promotion of making a strong production center to supply the safety and high quality fisheries

Ex: The fishing port where introduced measure of high sanitary management (construction of covered quay, purity seawater installation facility)



- Project effect at Kumaishi fishing port (Alaska Pollack)
- Establish a very good reputation with quality from distributor
- Upward trend of average price



Promoting high sanitary management

