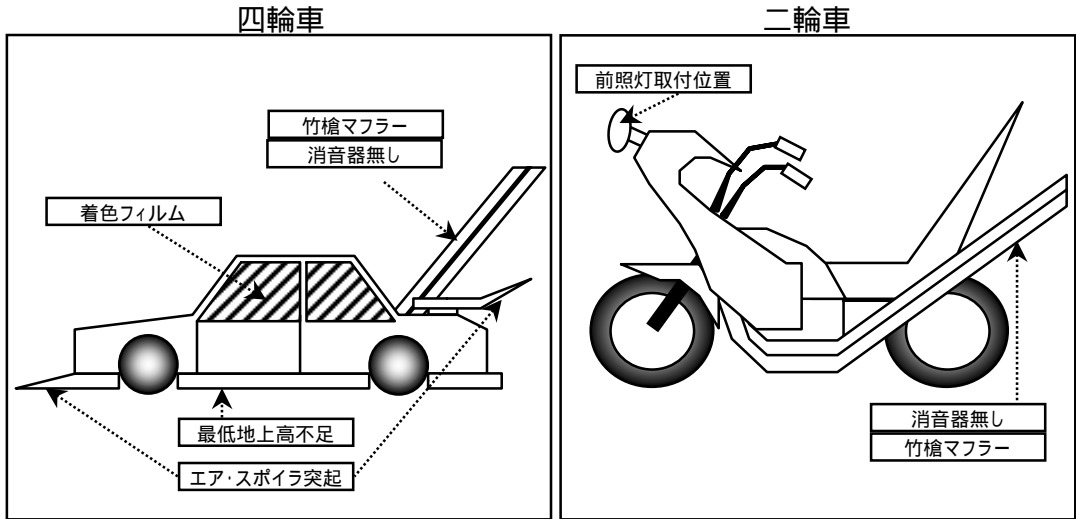


初日の出暴走の不正改造車両の例



主な暴走ルート

The map shows the Kanto region in Japan, with major roads and cities marked. Large black arrows indicate the primary routes for illegal driving (暴走ルート):

- From the north (Gunma Prefecture) towards the center (Saitama Prefecture).
- From the east (Chiba Prefecture) towards the center (Saitama Prefecture).
- From the south (Chiba Prefecture) towards the center (Saitama Prefecture).
- From the south (Chiba Prefecture) towards the west (Gifu Prefecture).

Key locations and roads shown include: 宇都宮 (Utsunomiya), 前橋 (Maebashi), 浦和 (Urawa), 東京 (Tokyo), 山梨 (Yamanashi), 富士山 (Mount Fuji), 横浜 (Yokohama), 名古屋 (Nagoya), 岐阜 (Gifu), 石川 (Ishikawa), 長野 (Nagano), 群馬 (Gunma), 埼玉 (Saitama), 千葉 (Chiba), 茨城 (Ibaraki), 栃木 (Tochigi), 群馬県 (Gunma Prefecture), 埼玉県 (Saitama Prefecture), 東京都 (Tokyo), 山梨県 (Yamanashi Prefecture), 静岡県 (Shizuoka Prefecture), 岐阜県 (Gifu Prefecture), 石川県 (Ishikawa Prefecture), 長野県 (Nagano Prefecture), 東京都 (Tokyo), 千葉県 (Chiba Prefecture), 茨城県 (Ibaraki Prefecture), 栃木県 (Tochigi Prefecture), 群馬県 (Gunma Prefecture), 埼玉県 (Saitama Prefecture), 東京都 (Tokyo), 山梨県 (Yamanashi Prefecture), 静岡県 (Shizuoka Prefecture), 岐阜県 (Gifu Prefecture), 石川県 (Ishikawa Prefecture), 長野県 (Nagano Prefecture).