

# Off Tohoku Pacific coast earthquake Southern Sendai Bay coast

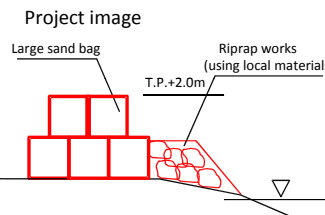
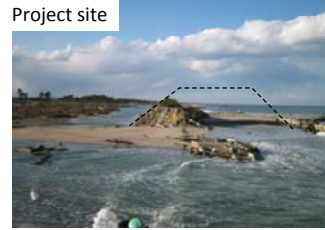
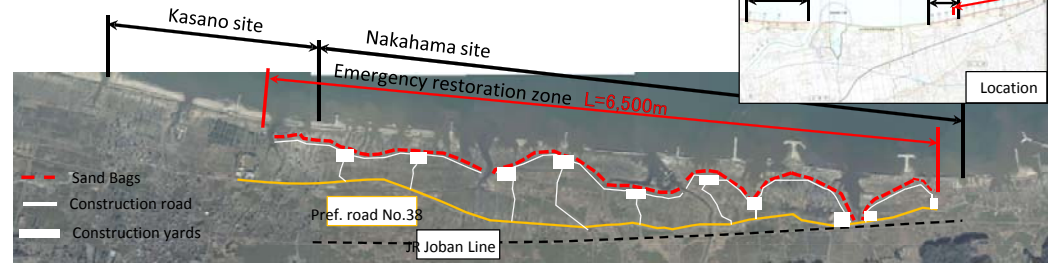
Photo taken on 12 March 2011 After disaster



Before disaster



## 【Project plan: Nakahama site】



**Project plan**

- Construction should start from high-priority zones in which livable houses and important facilities are still left.
- Project should also be coordinated with prefectures after discussions with relevant bodies

**<Emergency storm-surge measures>**

Storm-surge barrier and inland water drainage

- By flood season: closure works up to storm-surge height with large sand bags
- By typhoon season: reinforcement of the structure with local materials

**<Stage construction>**

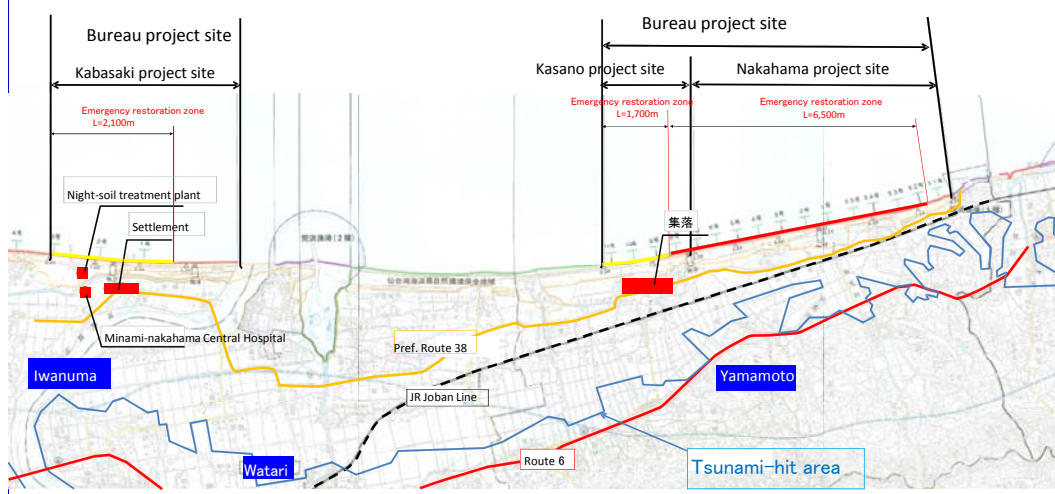
Protection of hinterland from storm surges/high waves before full restoration

After typhoon season: temporary levees to block high waves of recent record

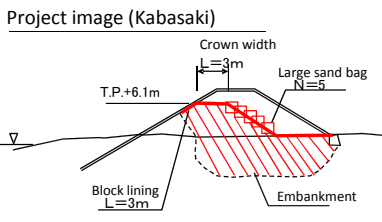
**<Full restoration project>**

Full restoration should start after coordination with local community-rebuilding plans and setting protection levels.

## Restoration plan for coastal levees (southern Sendai Bay coast)



## 【Project plan: Kabasaki & Kasano site】



-The basic concept of the plan is the same with the Nakahama plan.

-Wave barriers urgently needs to be restored up to the height that protects the area from high waves, because important public facilities for local community restoration is in the flooded area.