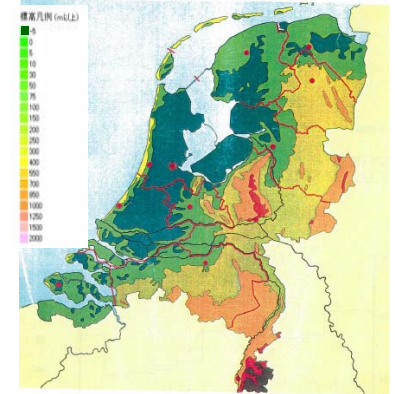
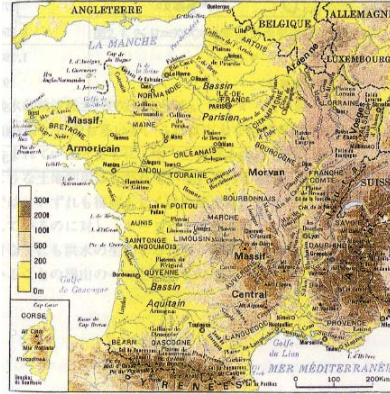
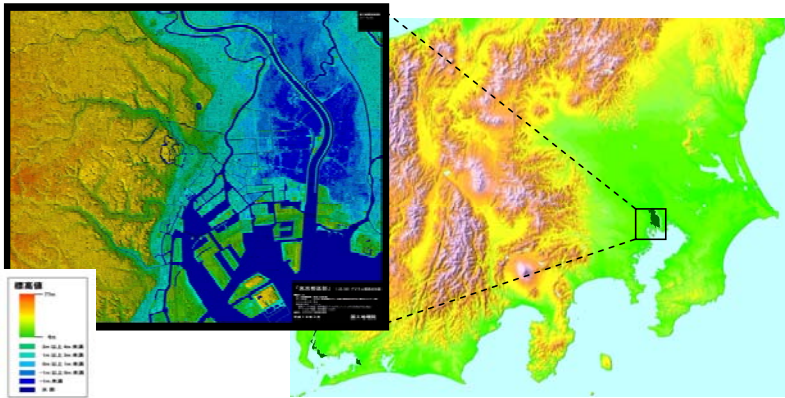




# Japan, France and the Netherlands

## 1. Present conditions in Japan



		Japan	France	The Netherlands
Geographical characteristics		<ul style="list-style-type: none"> <li>Area: <b>378,000km<sup>2</sup></b></li> <li>Many short steep rivers.</li> <li>Sediment problems because of poor soil</li> <li>Flood plain area is located by alluvial fan and riverside</li> </ul>	<ul style="list-style-type: none"> <li>Area: <b>547,000km<sup>2</sup></b></li> <li>Almost nation land is Gently rolling plain and hill</li> <li>South Pyrenees and East Alps are precipitous mountains</li> </ul>	<ul style="list-style-type: none"> <li>Area: <b>42,000km<sup>2</sup></b></li> <li>Rhine River, Maas River, Schelde River as mild slope international river</li> <li>Delta and low area</li> </ul>
Profile of representative river	Name of River	<b>Tone River</b>	<b>Seine River</b>	<b>Rhine River</b>
	Basin Area	About 17,000km <sup>2</sup>	About 78,000km <sup>2</sup>	About 185,000km <sup>2</sup>
	length of river	322km	776km	1,320km
	Average bed slope	About <b>1/175</b>	About <b>1/1,650</b>	About <b>1/2,600</b>
	largest flow discharge	<b>17,000m<sup>3</sup>/s</b> (1947)	<b>2,400m<sup>3</sup>/s</b> (1910)	<b>13,000m<sup>3</sup>/s</b> (1926)
Climate characteristics	annual mean rainfall	<b>1,718mm</b>	About <b>1,000mm</b>	About <b>800mm</b>
	100 year daily precipitation	<b>376mm</b> (Tokyo)	About <b>79.4mm</b> (Montsouris)	<b>80mm</b> (de Valdo)
	100 year hourly precipitation	94mm (Tokyo)	About 47.4mm (Montsouris)	40mm ( de Valdo )