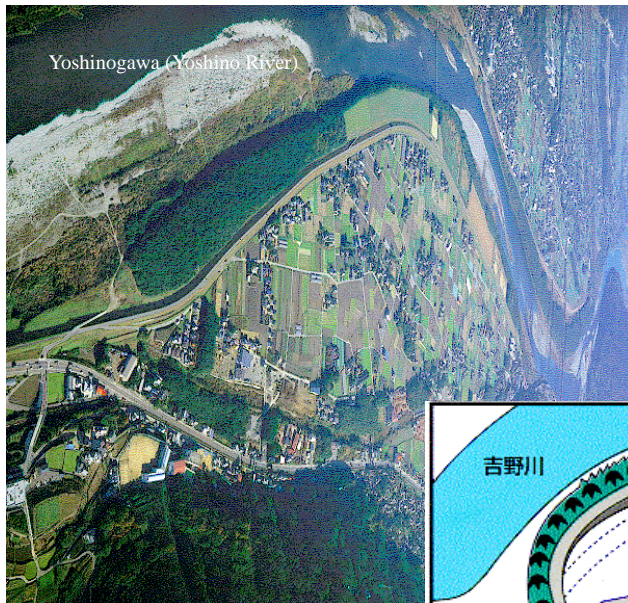


Traditional technique : Kakiyosetei ring dike with flood protection forest

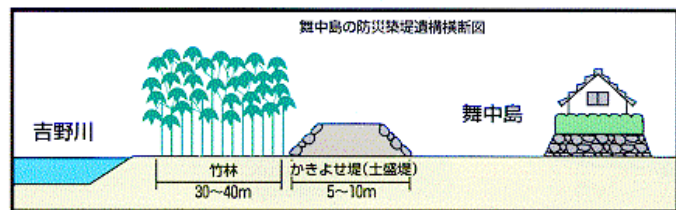
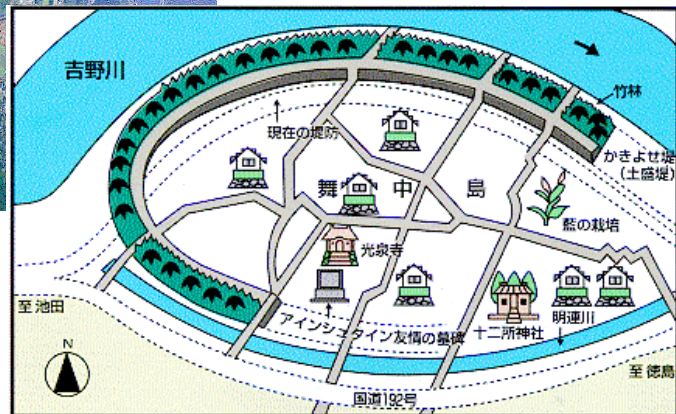
Category : Ring dike with flood protection forest Side : unknown

River : Yoshinogawa (Yoshino River)

Site : Anabuki-cho (Tokushima Pref.)



Kakiyosetei ring dike and the Mainakashima area



Concept of kakiyosetei with flood protection forest

Source: The Story of Shikoku Saburo: Visiting the Yoshinogawa (Yoshino River) Flood Sites (in Japanese), March 1997, Tokushima Work Office, Ministry of Construction

Description:

As is characteristic of ring dikes built for protection from flooding of rapid rivers, the downstream side of this kakiyosetei (literally meaning a scraped-up earth dike) ring dike is open so as to improve drainage. The earth dike is surrounded by a bamboo forest for flood protection, and the houses in the ring-diked area have been built on raised foundations. Thus, the flood protection measures in this area are triply redundant.