

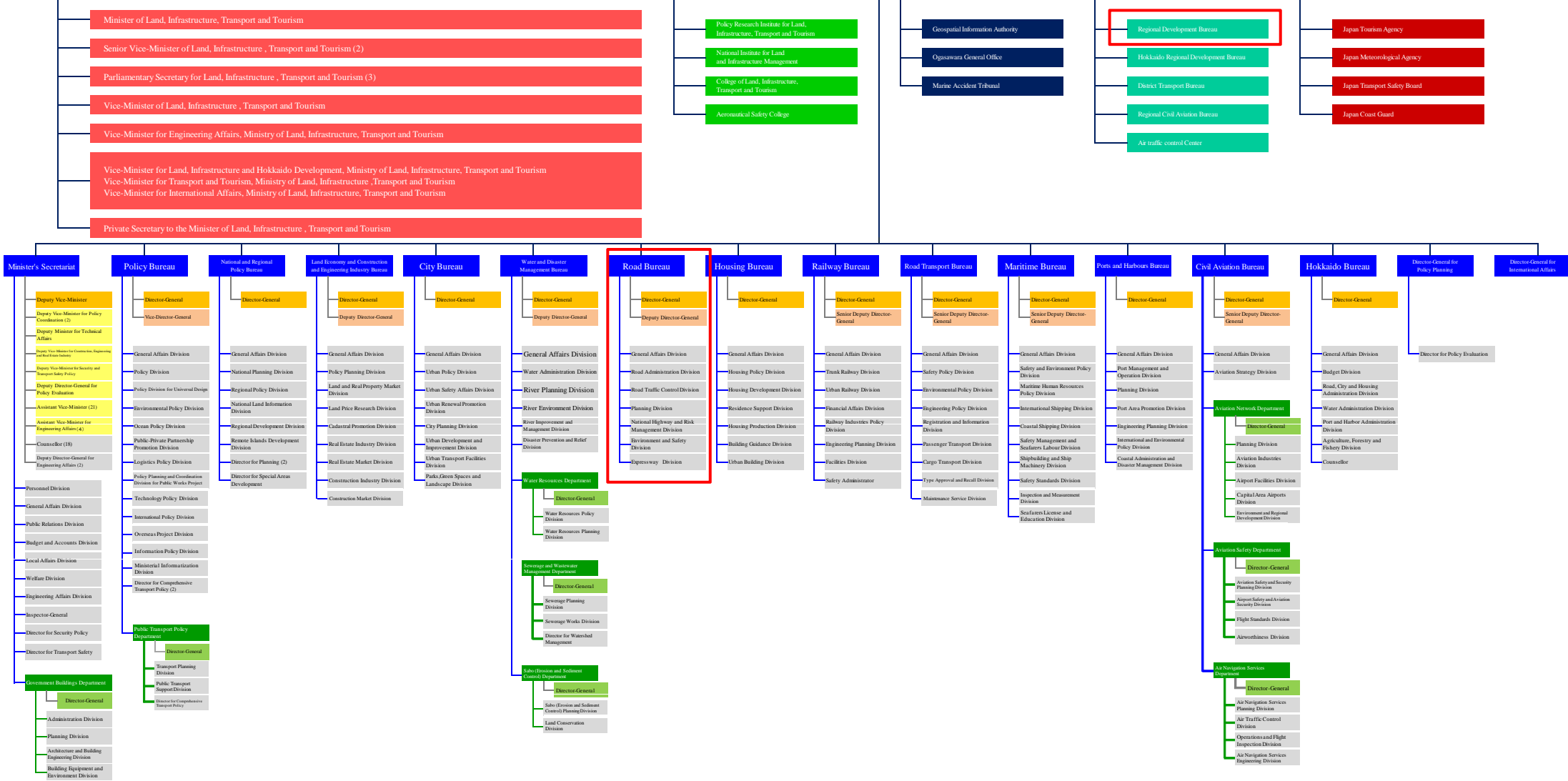
1. Organization Chart of MLIT

Number of staff

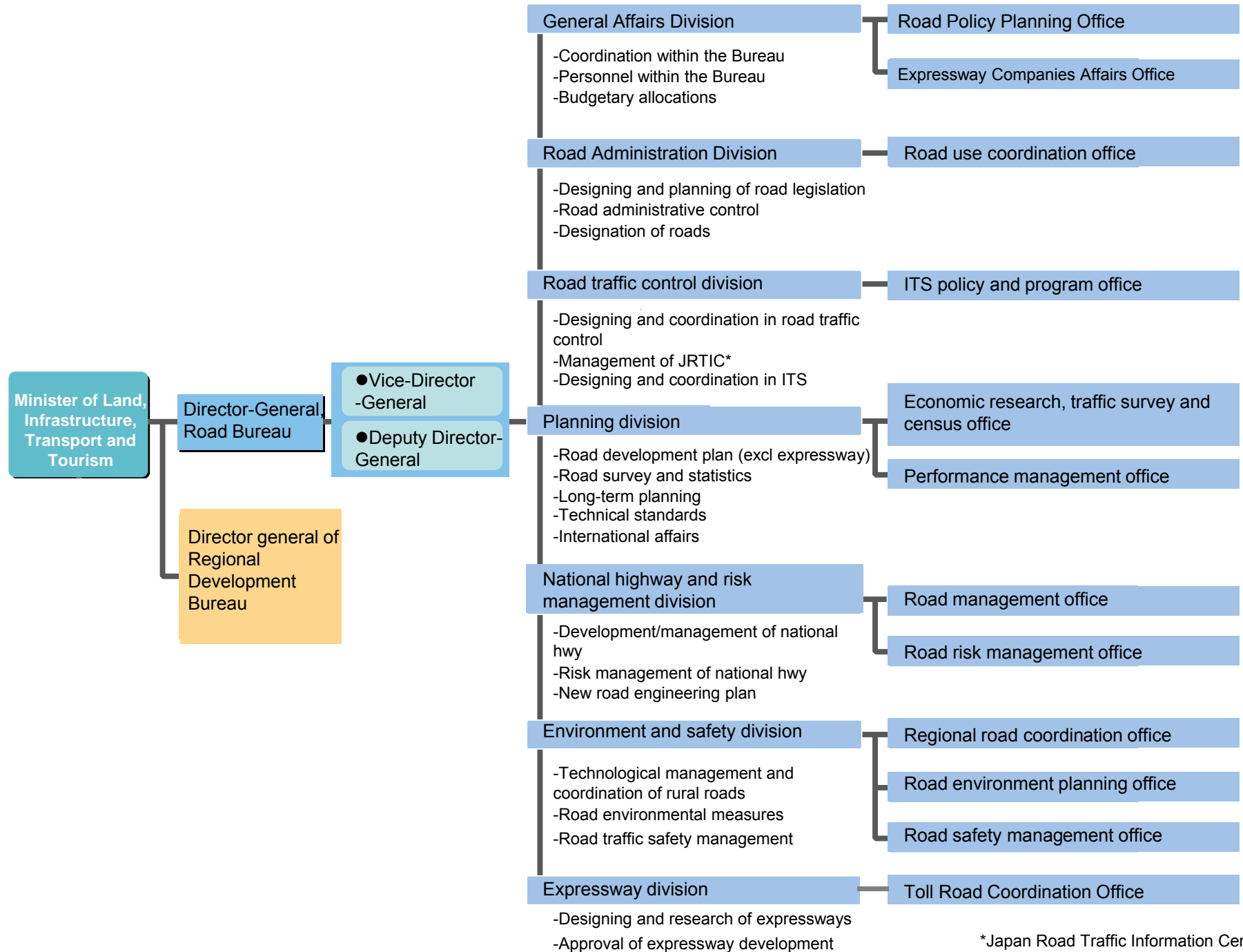
MLIT: about 60,000
of which Road Bureau: about 240
Regional Development Bureau: about 20,000

The Organization of the Ministry of Land, Infrastructure, Transport and Tourism (As of July 1, 2011)

Ministry of Land, Infrastructure, Transport and Tourism

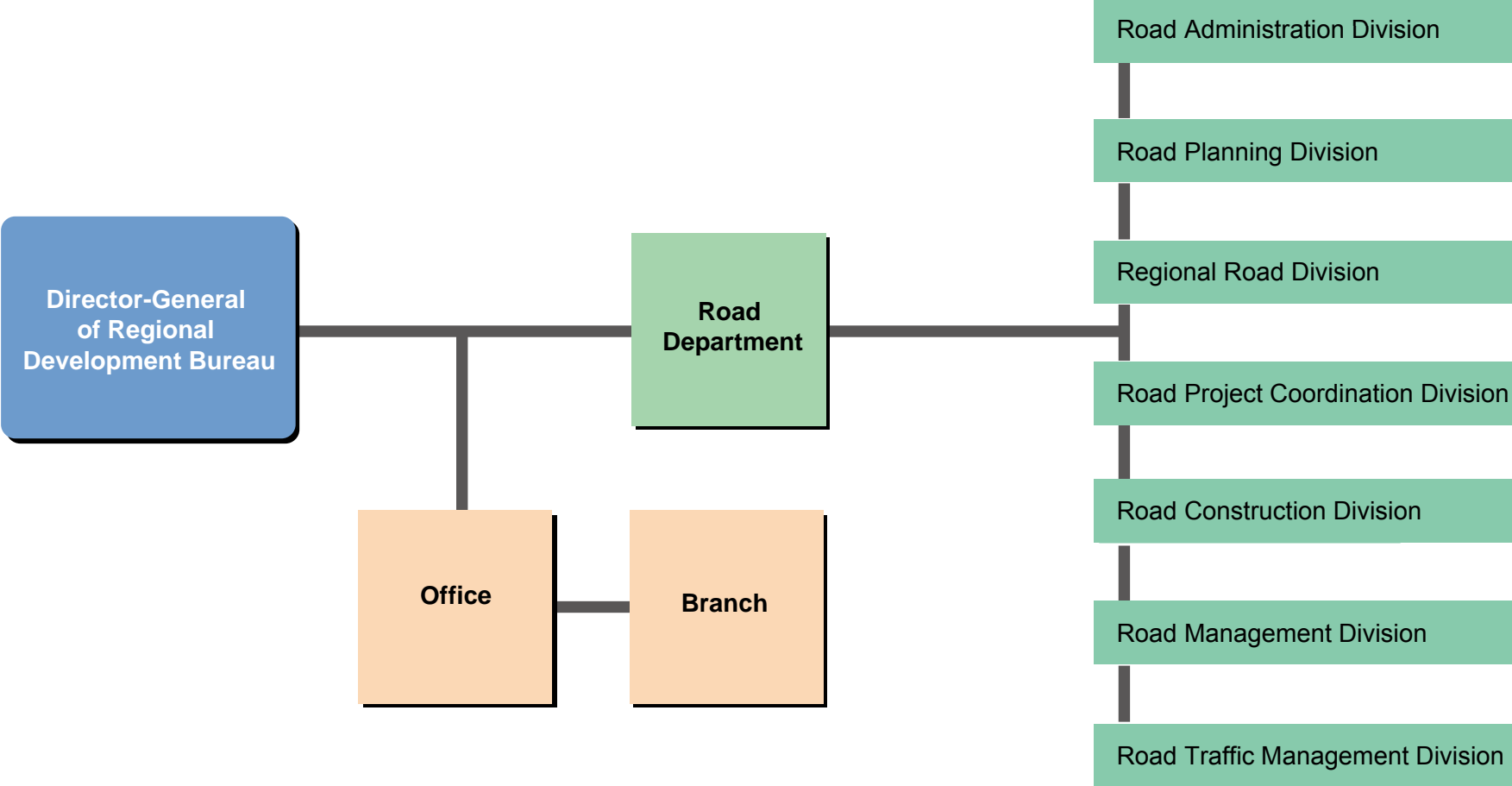


2. Organization Chart of Road Bureau



*Japan Road Traffic Information Center

3. Organization Chart of A Regional Development Bureau (Road Department)



Note: In addition to Road Department, a Regional Development Bureau has River Department and Port and Airport Department.