

PANAMA'S LOGISTICS POTENTIAL

Synergy between expanded Canal and local logistics center

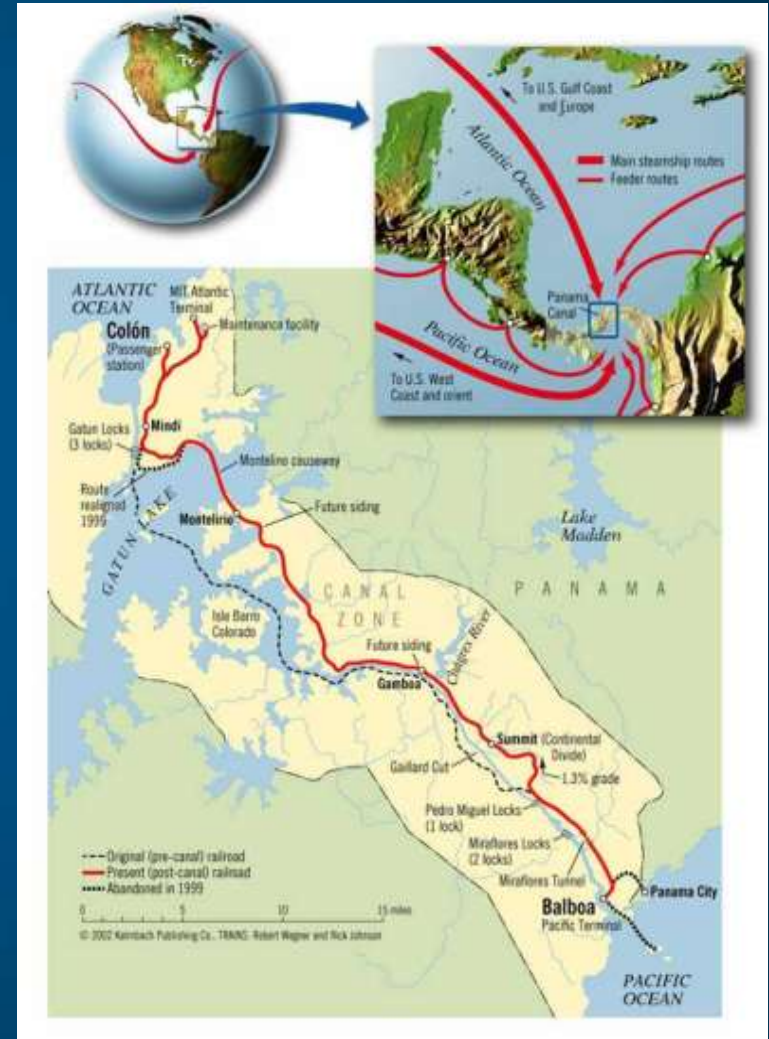


The Panama Canal: It's all about connectivity and value added services



Panama Maritime Cluster Today

- Panama is the Latin-American country with the highest container port throughput registered in 2013.
- Four renowned international port operators run the country's main container ports under concession contracts; Hutchinson and PSA in the Pacific; and SSA Marine, Evergreen and Hutchinson in the Atlantic.
- Panama offers a unique connectivity to world maritime trade, a canal that links two oceans and ports, an interoceanic railroad, ancillary services for ships and ports, and a shipyard for oceangoing ships, that add value to the route and places Panama as the main transshipment hub in the region.



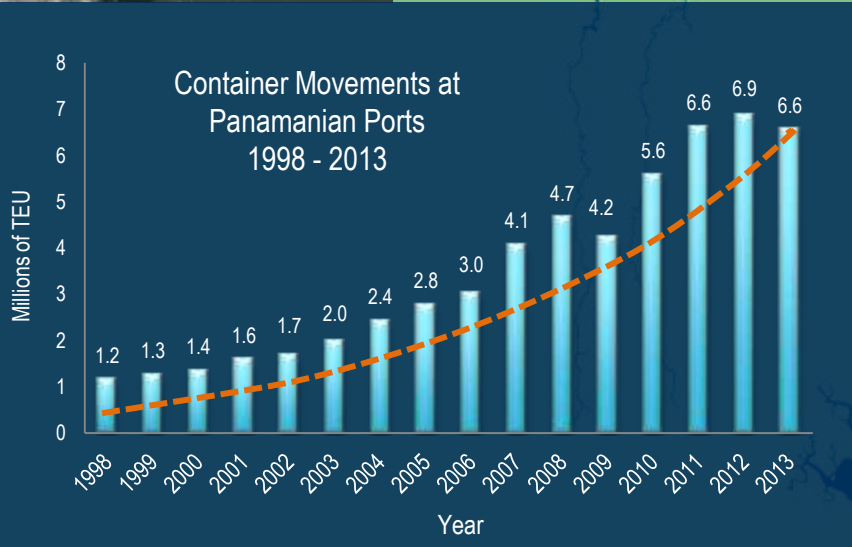


CARIBBEAN SEA



PACIFIC OCEAN

PANAMA: 80 KM OCEAN TO OCEAN





Manzanillo Logistic Park

Car Carrier Terminal WWL

Bunker Terminal Atlantic



Colon Free Zone

Bunker Terminal Pacific

Panama Pacific Special Economic Zone



PACIFIC OCEAN

PANAMA: 80 KM OCEAN TO OCEAN



Ancillary Activities Under Analysis

PANAMA: 80 KM OCEAN TO OCEAN

CARIBBEAN SEA

RoRo Terminal



Container Barge Services



LNG Terminal



Top-Off Operations



Logistics Park Services



Vessel Repairs

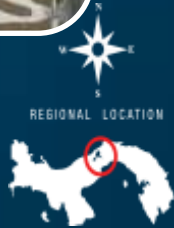


New Container Terminal at Corozal



Bunkering

PACIFIC OCEAN



REGIONAL LOCATION

New Container Terminal at Corozal



Port Development in Panama

New Ports

2,000,000
TEUs

Panama Canal Colon Port

1,500,000
TEUs

Panama Ports Company
Cristobal

1,600,000
TEUs

Colon Container Terminal

2,200,000
TEUs

Manzanillo International Terminal

450,000
TEUs

PSA

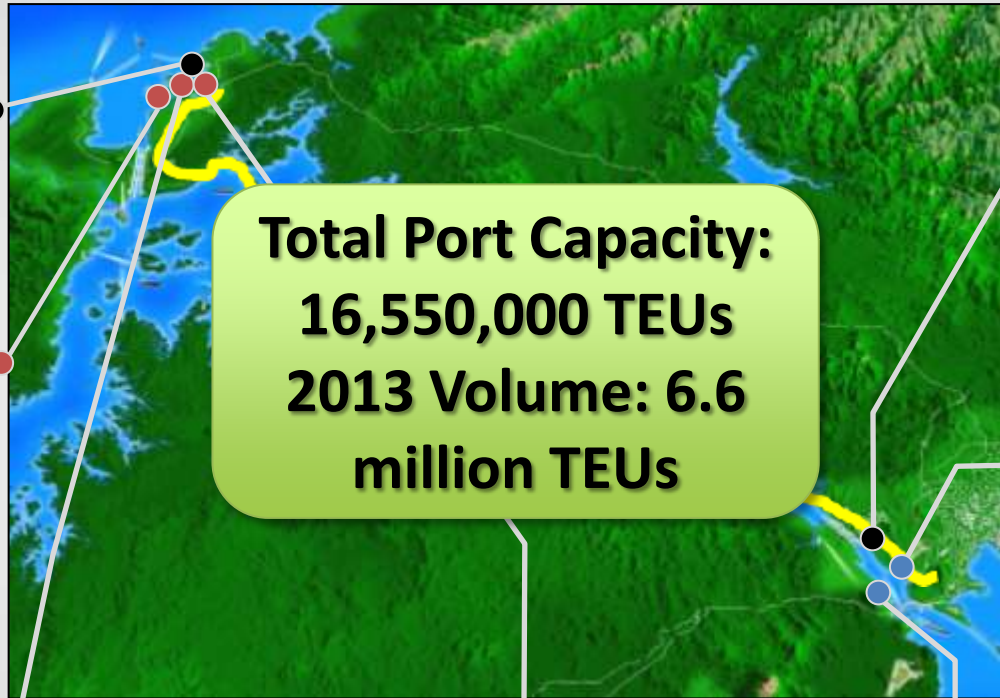
5,200,000
TEUs

Corozal Port

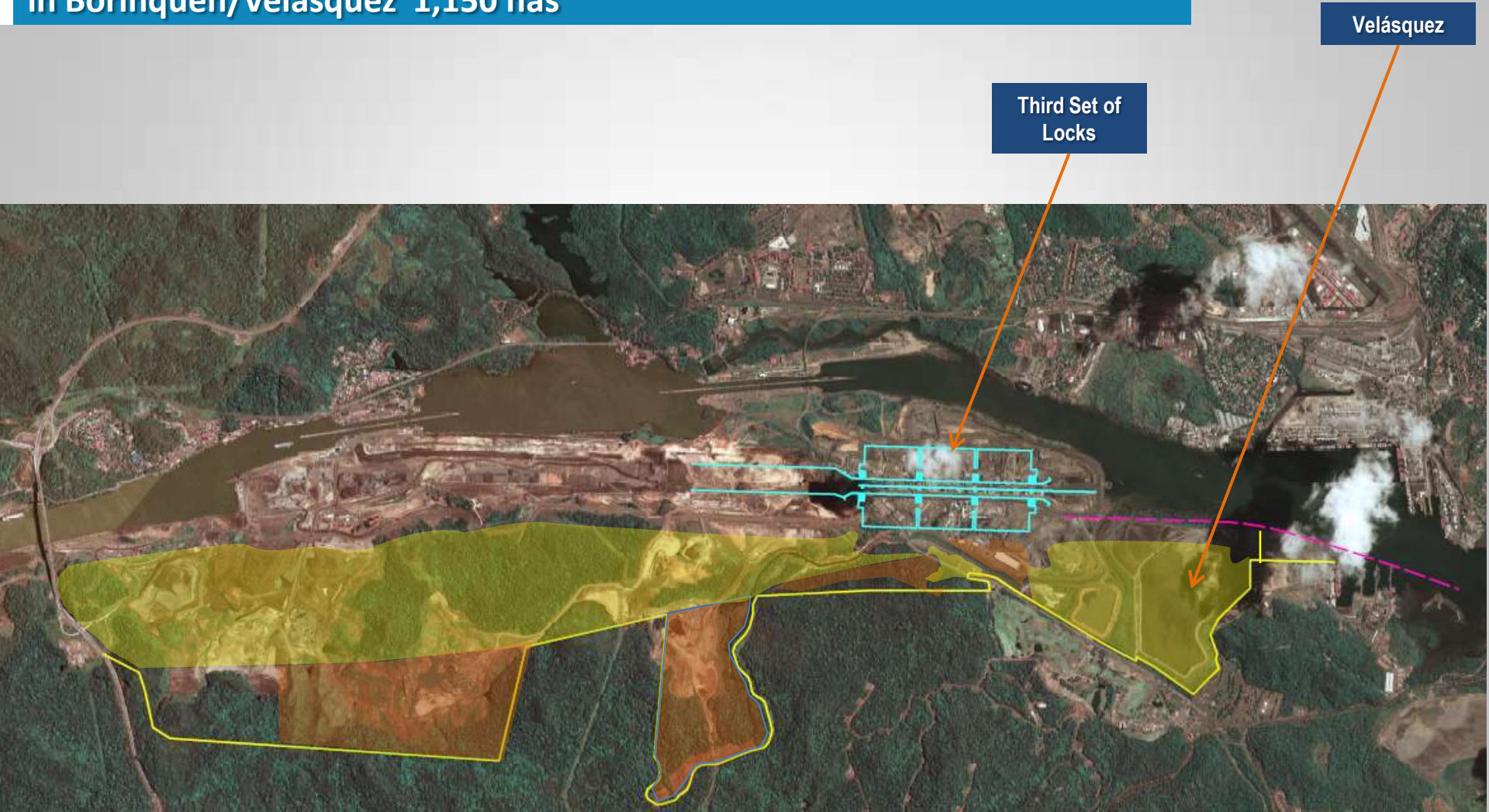
3,600,000
TEUs

Panama Ports Company
Balboa

**Total Port Capacity:
16,550,000 TEUs
2013 Volume: 6.6
million TEUs**



Potential development of a Special Economic Area in Borinquen/Velásquez 1,150 has



-  Land under ACP jurisdiction
-  Areas under use and administration