

平成27年11月の建設工事受注動態統計調査(大手50社調査)結果

民間工事は、不動産業、金融業、保険業、その他等が減少したため、対前年同月比6.0%減少し、2ヶ月連続で減少した。
総計は、同5.7%増加し、先月の減少から再び増加した。

1. 受注総額

- ① 11月の受注総額は1兆45億円。
- ② 対前年同月比は、5.7%増であり、先月の減少から再び増加。
- ③ 国内は、民間工事は減少し、公共工事は増加した。国内計は9,029億円(対前年同月比1.4%減、2ヶ月連続の減少)

2. 民間

- ① 11月の民間工事は5,942億円(対前年同月比6.0%減、2ヶ月連続の減少)
- ② 製造業は増加し、非製造業は減少した。
 - ・ 製造業(同19.7%増)、非製造業(同12.1%減)
 - ・ 発注者別では、運輸業、郵便業、製造業、電気・ガス・熱供給・水道業等が増加し、不動産業、金融業、保険業、その他等が減少した。
 - ・ 工事種類別では、建築は減少し、土木は増加した。宿泊施設、鉄道、倉庫・流通施設等が増加し、住宅、店舗、工場・発電所等が減少した。

3. 公共

- ① 11月の公共工事は2,670億円(対前年同月比9.0%増、先月の減少から再び増加)
- ② 国の機関は増加し、地方の機関は減少した。
 - ・ 国の機関(同37.9%増)、地方の機関(同23.3%減)
 - ・ 発注者別では、国の機関は、独立行政法人、政府関連企業等は増加し、国は減少した。地方の機関は、地方公営企業、その他は増加し、都道府県、市区町村は減少した。
 - ・ 工事種類別では、建築は増加し、土木は減少した。倉庫・流通施設、道路、鉄道、上水道・下水道等が増加し、治山・治水、土地造成、建築その他等が減少した。

4. 海外

- ① 11月の海外工事は1,016億円(対前年同月比190.3%増、5ヶ月ぶりの増加)

※1 平成20年4月より日本標準産業分類が改訂されたため、民間の発注者分類の名称を変更しました。
・ 鉱業、建設業 → 鉱業、採石業、砂利採取業、建設業
・ 卸売・小売業 → 卸売業、小売業
・ 運輸業 → 運輸業、郵便業
・ 金融・保険業 → 金融業、保険業

※2 海外工事の受注額には、現地法人分は含まない。

※3 施工都道府県別受注高を、平成22年12月分からP.3に追加しました。
(施工ブロック別受注高、施工都道府県別受注高は、国内計からその他(駐留軍・外国公館と小口工事)を除いたものです。)

※4 平成27年4月に調査対象を一部変更している。

建設工事受注動態統計調査（大手50社調査） 時系列表

（上段：実額 百万円 下段：前年同期比 %）

年 度	平成 24 年度 平成 25 年度 平成 26 年度	建設工事受注額											建築	土木	施工高	手持ち 工事高	手持ち 工事数
		総計	国内計	民間等			公共機関			その他	海外						
		小計	製造業	非製造業	小計	国の機関	地方の機関	小計	海外								
		11,044,725 2.4	10,528,394 3.3	7,425,835 2.6	1,489,492 ▲ 5.0	5,936,344 4.7	2,621,282 5.3	1,612,894 14.9	1,008,388 ▲ 7.0	481,277 2.2	516,331 ▲ 12.0	7,579,098 3.0	3,465,627 1.3	11,121,742 3.1	11,775,429 ▲ 0.0		
		13,267,704 20.1	12,400,801 17.8	8,482,779 14.2	1,456,789 ▲ 2.2	7,025,989 18.4	3,439,061 31.2	2,135,538 32.4	1,303,523 29.3	478,962 ▲ 0.5	866,903 67.9	8,847,002 16.7	4,420,703 27.6	12,432,664 11.8	12,936,356 9.9		
		14,357,927 8.2	13,590,315 9.6	8,892,769 4.8	1,675,862 15.0	7,216,907 2.7	4,227,154 22.9	2,744,688 28.5	1,482,465 13.7	470,392 ▲ 1.8	767,613 ▲ 11.5	9,183,044 3.8	5,174,884 17.1	12,997,290 5.9	14,032,990 8.5		
四 半 期	26 年 7- 9 月	3,492,618 ▲ 15.0	3,160,523 ▲ 19.5	2,146,387 ▲ 26.4	430,715 1.7	1,715,672 ▲ 31.1	896,563 0.6	535,446 6.4	361,116 ▲ 7.0	117,574 ▲ 0.2	332,095 80.8	2,330,068 ▲ 23.9	1,162,550 11.1	3,010,251 ▲ 2.1	13,943,316 6.2		
	10-12	3,341,424 12.9	3,055,935 10.4	2,065,114 8.9	397,570 21.2	1,667,545 6.4	866,576 14.1	468,880 7.6	397,695 22.9	124,245 10.4	285,489 48.5	2,193,794 15.2	1,147,631 8.8	3,343,973 1.6	13,828,638 7.1		
	27 年 1- 3 月	4,138,708 11.6	4,096,368 22.4	2,801,737 43.2	453,045 14.8	2,348,692 50.4	1,174,180 ▲ 6.6	780,298 ▲ 7.5	393,882 ▲ 4.8	120,450 ▲ 8.9	42,340 ▲ 88.3	2,722,802 24.1	1,415,906 ▲ 6.6	3,894,901 16.4	14,032,990 8.5		
	4- 6	3,334,451 ▲ 1.5	3,224,580 ▲ 1.6	2,304,817 22.6	479,114 21.4	1,825,702 22.9	778,577 ▲ 39.6	541,673 ▲ 43.6	236,903 ▲ 28.2	141,187 30.6	109,871 2.0	2,253,134 16.4	1,081,317 ▲ 25.4	3,134,595 14.1	14,625,297 8.1		
	7- 9	3,370,496 ▲ 3.5	3,293,274 4.2	2,395,425 11.6	556,044 29.1	1,839,381 7.2	778,683 ▲ 13.1	509,211 ▲ 4.9	269,472 ▲ 25.4	119,167 1.4	77,222 ▲ 76.7	2,396,034 2.8	974,462 ▲ 16.2	3,309,192 9.9	14,365,016 3.0		
次	26 年 11 月	950,368 16.9	915,365 27.4	631,938 32.0	122,450 23.9	509,488 34.1	244,921 20.9	129,213 0.4	115,708 56.7	38,507 4.2	35,002 ▲ 63.0	660,183 38.0	290,185 ▲ 13.3	1,020,443 ▲ 10.5	13,965,705 7.2	13.5	
	12	1,219,934 7.5	1,092,520 1.1	724,880 4.6	133,413 0.4	591,467 5.6	329,001 ▲ 5.8	193,548 9.1	135,453 ▲ 21.2	38,640 0.8	127,414 133.8	811,712 14.2	408,222 ▲ 3.8	1,431,985 14.4	13,828,638 7.1	13.2	
	27 年 1 月	1,053,796 27.5	1,037,446 37.6	752,491 43.6	150,178 45.4	602,313 43.2	248,976 27.9	170,252 18.5	78,724 54.4	35,979 2.1	16,350 ▲ 77.5	781,742 34.2	272,054 11.6	866,305 9.5	14,091,135 9.0	13.8	
	2	1,130,574 1.0	1,115,765 18.9	780,944 49.6	117,406 ▲ 4.8	663,538 66.4	291,016 ▲ 23.0	202,450 ▲ 15.2	88,565 ▲ 36.3	43,805 12.4	14,809 ▲ 91.8	778,848 7.2	351,726 ▲ 10.6	1,046,290 9.9	13,981,534 8.1	12.7	
	3	1,954,338 10.8	1,943,157 17.5	1,268,302 39.3	185,460 10.4	1,082,842 45.8	634,189 ▲ 7.4	407,596 ▲ 11.6	226,593 1.3	40,666 ▲ 29.9	11,181 ▲ 89.8	1,162,213 31.4	792,126 ▲ 9.9	1,982,305 13.2	14,032,990 8.5	12.8	
	4	1,183,584 ▲ 12.1	1,173,090 ▲ 12.3	879,138 33.6	213,521 52.2	665,616 28.5	238,294 ▲ 62.9	165,526 ▲ 71.4	72,768 14.4	55,659 48.2	10,494 15.3	848,903 36.7	334,681 ▲ 53.9	929,605 16.5	14,544,901 8.3	13.3	
	5	819,255 ▲ 7.4	793,301 ▲ 2.6	562,182 10.2	113,060 ▲ 2.4	449,122 13.9	195,775 ▲ 27.5	132,343 ▲ 17.7	63,432 ▲ 41.9	35,344 2.5	25,954 ▲ 63.2	528,417 ▲ 4.6	290,838 ▲ 12.1	962,600 15.5	14,525,986 7.6	13.1	
	6	1,331,612 15.4	1,258,189 11.8	863,497 21.4	152,533 10.1	710,964 24.1	344,508 ▲ 8.9	243,805 10.2	100,703 ▲ 35.9	50,184 39.1	73,423 161.3	875,814 15.0	455,798 16.2	1,242,390 11.2	14,625,297 8.1	13.1	
	7	1,016,687 ▲ 4.0	1,004,689 3.9	722,088 12.2	212,216 78.7	509,872 ▲ 2.8	245,441 ▲ 14.3	169,639 2.5	75,802 ▲ 37.3	37,160 ▲ 0.4	11,998 ▲ 86.9	720,206 9.0	296,481 ▲ 25.6	872,844 10.7	14,673,075 6.3	13.1	
	8	917,802 ▲ 15.6	880,006 ▲ 3.6	597,519 7.7	186,670 56.4	410,849 ▲ 5.6	245,508 ▲ 24.4	173,204 ▲ 16.0	72,304 ▲ 39.0	36,979 10.0	37,796 ▲ 78.4	592,752 ▲ 20.4	325,050 ▲ 5.3	1,014,066 10.5	14,216,537 2.5	12.6	
	9	1,436,007 6.7	1,408,579 10.0	1,075,818 13.4	157,158 ▲ 18.4	918,659 21.6	287,733 0.8	166,368 1.6	121,365 ▲ 0.3	45,028 ▲ 3.4	27,428 ▲ 58.2	1,083,076 17.1	352,931 ▲ 16.2	1,422,282 9.0	14,365,016 3.0	12.6	
10	875,437 ▲ 25.2	849,675 ▲ 18.9	568,081 ▲ 19.8	163,226 15.2	404,855 ▲ 28.5	243,910 ▲ 16.7	133,156 ▲ 8.9	110,754 ▲ 24.4	37,684 ▲ 20.0	25,762 ▲ 79.1	586,163 ▲ 18.8	289,274 ▲ 35.6	1,083,466 21.5	14,172,329 0.7	12.3		
11	1,004,489 5.7	902,868 ▲ 1.4	594,249 ▲ 6.0	146,574 19.7	447,675 ▲ 12.1	266,957 9.0	178,205 37.9	88,752 ▲ 23.3	41,662 8.2	101,621 190.3	629,263 ▲ 4.7	375,227 29.3	—	—	—		
累 計	H27.4 ~ 27.11	8,584,874 ▲ 4.6	8,270,397 ▲ 1.6	5,862,571 9.3	1,344,958 23.5	4,517,613 5.6	2,068,126 ▲ 24.1	1,362,246 ▲ 23.1	705,881 ▲ 25.9	339,699 9.1	314,477 ▲ 47.4	5,864,594 3.8	2,720,279 ▲ 18.8	—	—	—	

建設工事受注動態統計調査（大手50社調査） 結果表

1. 受注高（平成 27年11月分）

（単位：百万円、％）

Main data table with columns for '工事種類別' (Construction Type) and '発注者別' (Client Type). Categories include 製造業 (Manufacturing), 農林漁業 (Agriculture), 運輸業 (Transportation), and others. Rows show values for various sub-categories like 事務所, 宿泊, etc., and include '前年同月比' (YoY Change) for many rows.

2. 施工高及び手持ち工事高（平成 27年 10月分）

Table showing construction value and backlog for Oct 27. Columns: 合計 (Total), 建築 (Construction), 土木 (Civil Engineering), 前年同月比 (YoY Change). Rows: 施工高(月間) (Construction Value Monthly), 手持ち工事高(月末) (Backlog End of Month), 手持ち工事月数 (Number of Months Backlog).

3. 大規模工事(受注高10億円以上の国内工事)(平成 27年11月分)

Table for large-scale construction (≥10 billion yen). Columns: 合計 (Total), 建築 (Construction), 土木 (Civil Engineering). Rows: 合計 (Total), 民間等 (Private), 公共機関 (Public Organs).

大規模工事 比率 56.8%

前年同月比 ▲8.9%

4. ブロック別受注高（平成 27年 10月分）

Table showing regional construction value for Oct 27. Columns: 北海道 (Hokkaido), 東北 (Tohoku), 関東 (Kanto), 北陸 (Hokuriku), 中部 (Chubu), 近畿 (Kansai), 中国 (Chugoku), 四国 (Shikoku), 九州・沖縄 (Kyushu/Okinawa). Rows: 受注高 (Construction Value), 前年同月比 (YoY Change).

5. 施工都道府県別受注高（平成27年10月分）

Table showing construction value by prefecture for Oct 27. Columns: 都道府県名 (Prefecture Name), 受注額 (Construction Value). Rows list 47 prefectures and a total row.

注. 「2. 施工高及び手持ち工事高, 手持ち工事月数」, 「4. ブロック別受注高」及び「5. 都道府県別受注高」の数値については, 前月分の値である。

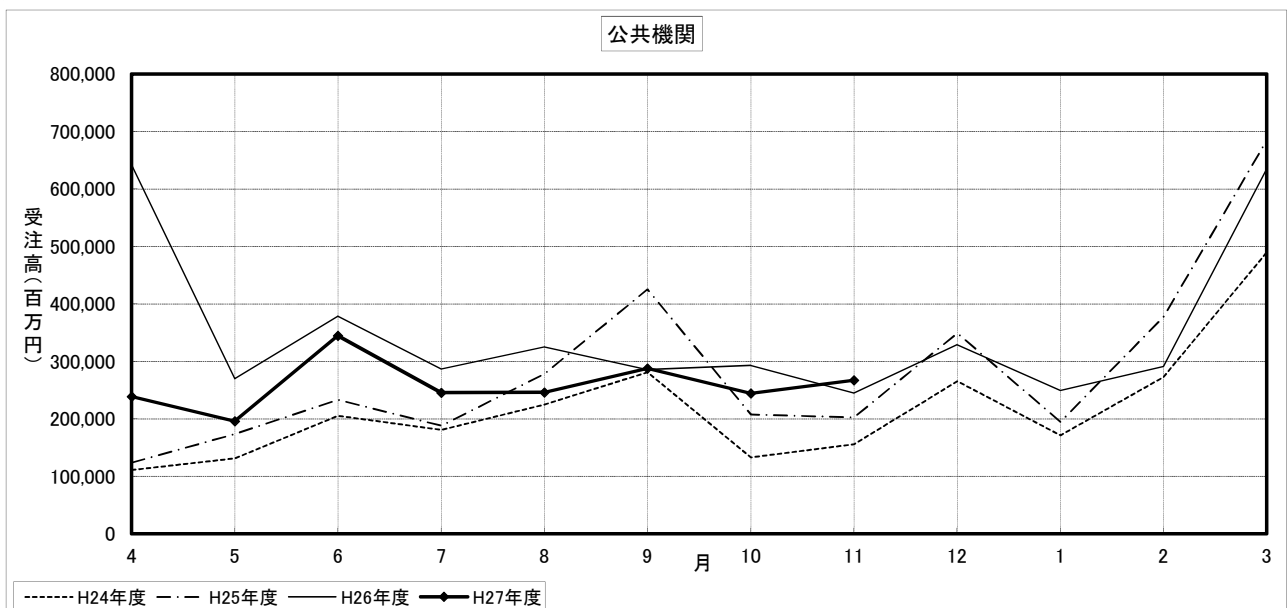
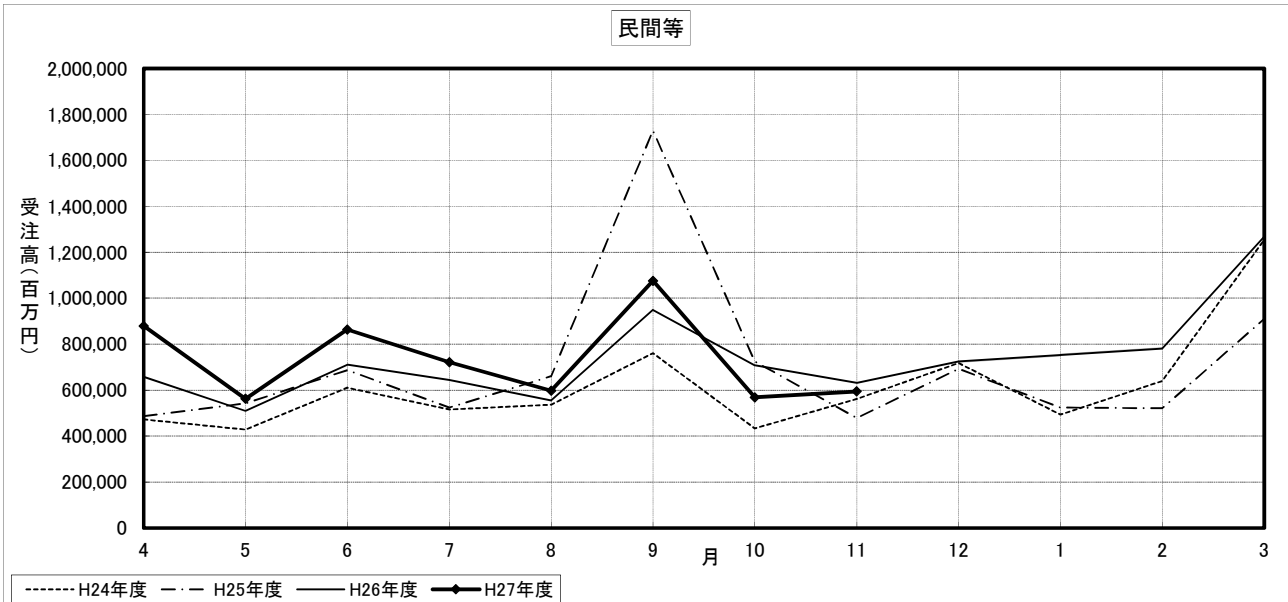
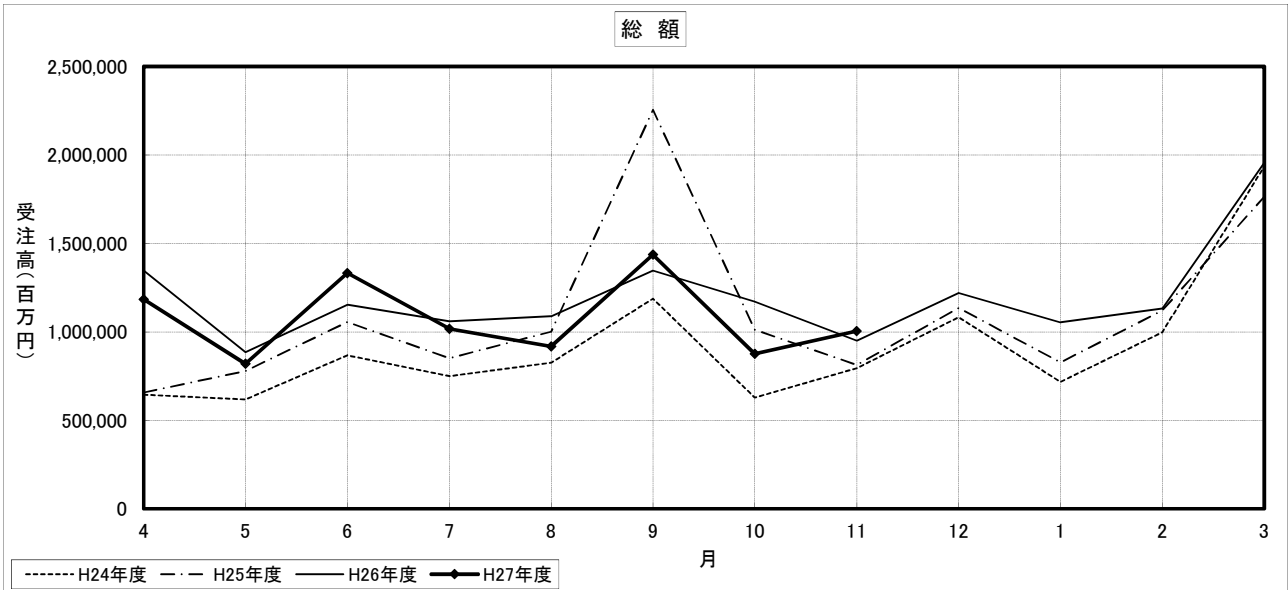
建設工事受注動態統計調査（大手50社調査） 寄与度表

寄与度（平成27年11月分）

工事種類別		建										土				木				合計				
		事務所 庁舎	宿泊 施設	店舗	工場 発電所	倉庫 流通 施設	住宅	教育 研究 文化施設	医療 福祉施設	娯楽 施設	その他	計	治山 治水	鉄道	上水道 下水道	土地造成	港湾 空港	道路	電線路		その他	計		
民間 等	製造業	1.26			-0.18	0.30	0.17	0.43		0.33		2.33							0.24			0.21	2.54	
	非製造業	農林漁業																						
		鉱業、採石業、砂利採取業、建設業		-0.19									-0.11											
		電気・ガス・熱供給・水道業	-0.14			-0.34						0.16	-0.54						0.29	0.88		1.30	0.75	
		運輸業、郵便業	2.63	-0.46	0.14		-0.72		-0.45				1.17		1.41						-0.12	0.14	1.47	2.64
		情報通信業	-0.28	0.77									0.16	0.62										0.68
		卸売業、小売業			0.43	-0.25	0.24							0.39										0.46
		金融業、保険業	-0.95		-2.03							0.29		-2.80										-2.81
		不動産業	-2.83	1.14	-0.29	-0.24	1.33	-9.05	0.88	0.72		0.32	-8.07										0.15	-7.92
		サービス業	0.74	0.86	-0.33	0.10			-1.17	0.15	-0.33	0.14	0.17				0.26					-0.26		0.18
その他		-0.39									-0.49											-0.44		
小計	-0.99	1.80	-2.10	-0.64	0.88	-9.25	-0.76	0.95	-0.29	0.77	-9.65		1.45		0.39			0.46	0.80	3.14	-6.50			
計	0.26	1.80	-2.13	-0.82	1.17	-9.08	-0.33	0.93		0.85	-7.32		1.45		0.45	0.27		0.43	0.77	3.36	-3.97			
公共 機関	国	0.31					0.16				-0.94	-0.61	-0.12						-0.15		-0.16	-0.53	-1.14	
	の独立行政法人	1.72					0.27	0.74				2.71		1.04		-0.92				-0.11		2.76		
	機関政府関連企業等	0.13				1.23		0.47		0.67	-0.30	2.22			0.51		-0.29	0.88	0.25		1.31	3.53		
	小計	2.16				1.20	0.43	1.15	-0.15	0.67	-1.20	4.32		1.04	0.51	-0.99	-0.32	0.77	0.25	-0.31	0.84	5.16		
	地方	-0.71										0.13	-0.55	-3.86				-0.27	0.36		0.16	-3.63	-4.18	
	の市区町村	-0.51					0.48	-0.50	-0.83				-1.36		0.28	-0.52					1.19	1.00	-0.36	
	の地方公営企業											1.38			-0.27							-0.27	1.11	
	その他														0.54							0.59	0.59	
小計	-1.25					0.45	-0.53	0.54		0.29	-0.51	-3.80		0.59	-0.58	-0.29	0.35		1.39	-2.32	-2.84			
計	0.91				1.21	0.88	0.62	0.39	0.65	-0.90	3.80	-3.93	1.10	1.10	-1.57	-0.61	1.12	0.23	1.07	-1.49	2.32			
駐留軍・外国公館										0.37	0.38											0.37		
小口工事											-0.13													
国内	1.17	1.85	-2.12	-0.83	2.38	-8.20	0.29	1.32	0.68	0.32	-3.27	-3.87	2.55	1.10	-1.12	-0.34	1.04	0.66	1.85	1.96	-1.32			
海外	-0.51			-1.10		-0.14	0.88				0.82		0.13	0.41		0.17	4.75		1.49	6.99	7.01			
総計	0.66	1.83	-2.05	-1.94	2.39	-8.34	1.17	1.33	0.68	1.14	-3.25	-3.78	2.68	1.51	-1.12	-0.17	5.79	0.60	3.34	8.95	5.69			

注) 1. 寄与度が0.1に満たない項目は、便宜上空欄としている。

建設工事受注動態統計調査（大手50社調査）の推移



2年	1月	1,803,814	1,299,509	-	-	-	-	-	-	-	-	-	-	299,485	110,410	68,689	-	-	168,843	61,462	96,705	30,247	14,501	81,940
	2	1,797,110	1,316,513	-	-	-	-	-	-	-	-	-	-	368,010	134,435	56,753	-	-	224,092	76,445	103,563	14,299	16,289	80,514
	3	1,862,061	1,341,193	-	-	-	-	-	-	-	-	-	-	401,301	158,879	68,002	-	-	238,341	60,608	139,130	32,978	15,261	90,427
	4	2,214,342	1,559,146	-	-	-	-	-	-	-	-	-	-	496,987	218,925	85,386	-	-	270,579	81,925	122,976	40,382	23,734	92,979
	5	2,163,175	1,582,988	-	-	-	-	-	-	-	-	-	-	407,985	155,323	38,282	-	-	236,014	65,544	106,798	39,869	15,787	84,149
	6	2,255,059	1,724,972	-	-	-	-	-	-	-	-	-	-	386,875	152,452	50,208	-	-	229,089	84,816	107,364	22,941	21,390	72,833
	7	2,079,280	1,481,533	-	-	-	-	-	-	-	-	-	-	439,082	152,612	55,327	-	-	275,710	113,557	104,289	32,521	33,531	56,987
	8	2,171,238	1,696,857	-	-	-	-	-	-	-	-	-	-	424,753	142,380	61,844	-	-	263,365	104,208	127,026	25,192	23,196	45,720
	9	2,033,693	1,599,181	-	-	-	-	-	-	-	-	-	-	336,074	111,078	42,619	-	-	217,578	69,807	104,597	20,364	18,365	45,901
	10	2,094,584	1,507,825	-	-	-	-	-	-	-	-	-	-	474,208	190,763	68,914	-	-	272,065	95,738	112,877	55,269	16,820	53,534
	11	2,307,290	1,630,355	-	-	-	-	-	-	-	-	-	-	459,034	187,363	67,301	-	-	267,142	80,708	126,361	36,404	22,933	123,206
	12	2,148,852	1,579,580	-	-	-	-	-	-	-	-	-	-	493,954	186,069	76,974	-	-	297,847	82,398	131,984	69,920	18,102	42,310
3年	1月	2,048,369	1,452,976	-	-	-	-	-	-	-	-	-	-	464,648	146,959	84,311	-	-	280,364	116,975	123,140	24,025	20,267	52,285
	2	2,249,942	1,650,569	-	-	-	-	-	-	-	-	-	-	486,110	227,103	90,814	-	-	235,481	52,109	135,890	14,764	28,996	61,907
	3	2,121,015	1,512,722	-	-	-	-	-	-	-	-	-	-	492,446	209,661	76,953	-	-	253,786	101,842	129,641	21,874	18,673	75,678
	4	2,286,897	1,664,193	-	-	-	-	-	-	-	-	-	-	514,138	233,368	75,933	-	-	266,604	80,318	139,626	28,689	25,708	54,313
	5	2,175,854	1,567,776	-	-	-	-	-	-	-	-	-	-	496,098	224,273	80,538	-	-	269,414	93,672	127,124	29,420	9,115	53,988
	6	2,075,874	1,488,526	-	-	-	-	-	-	-	-	-	-	438,330	180,187	82,316	-	-	259,158	86,820	126,479	28,748	18,348	82,514
	7	2,122,147	1,521,178	-	-	-	-	-	-	-	-	-	-	458,211	178,860	89,829	-	-	269,420	82,766	129,951	34,762	27,947	52,456
	8	2,075,770	1,479,193	-	-	-	-	-	-	-	-	-	-	513,671	190,676	70,743	-	-	305,790	84,638	179,591	37,466	19,591	72,813
	9	2,207,351	1,592,792	-	-	-	-	-	-	-	-	-	-	485,297	184,931	69,234	-	-	293,370	100,729	143,592	33,013	19,115	43,637
	10	1,988,814	1,371,334	-	-	-	-	-	-	-	-	-	-	501,663	190,418	74,972	-	-	296,684	102,724	119,322	31,886	39,522	47,096
	11	1,881,976	1,158,473	-	-	-	-	-	-	-	-	-	-	529,404	183,591	88,068	-	-	316,428	108,120	148,670	29,738	37,082	84,183
	12	1,975,555	1,344,564	-	-	-	-	-	-	-	-	-	-	495,524	198,938	77,601	-	-	283,403	81,398	143,788	29,190	31,508	91,312
4年	1月	1,803,998	1,251,273	-	-	-	-	-	-	-	-	-	-	442,832	188,997	67,226	-	-	215,225	80,205	116,273	35,907	7,502	56,637
	2	2,433,006	1,723,405	-	-	-	-	-	-	-	-	-	-	583,161	242,599	88,476	-	-	317,486	79,265	169,215	39,565	23,632	61,921
	3	2,376,748	1,732,564	-	-	-	-	-	-	-	-	-	-	492,387	178,041	74,357	-	-	327,152	73,134	121,289	39,662	62,866	140,261
	4	1,688,227	1,192,481	-	-	-	-	-	-	-	-	-	-	414,711	193,850	85,947	-	-	205,102	78,078	120,512	17,414	15,294	38,018
	5	1,860,849	1,181,738	-	-	-	-	-	-	-	-	-	-	550,569	231,296	100,874	-	-	325,979	93,178	151,261	32,905	40,136	72,871
	6	1,863,408	1,211,665	-	-	-	-	-	-	-	-	-	-	558,719	363,743	74,754	-	-	247,367	78,457	121,672	18,095	24,374	43,117
	7	1,969,157	1,218,210	-	-	-	-	-	-	-	-	-	-	624,312	325,194	95,315	-	-	317,425	87,845	163,608	32,925	26,894	86,065
	8	2,055,391	1,074,168	-	-	-	-	-	-	-	-	-	-	776,894	271,827	99,539	-	-	490,892	315,390	162,078	29,866	70,991	125,195
	9	2,022,422	1,266,319	-	-	-	-	-	-	-	-	-	-	675,453	268,145	107,659	-	-	418,095	161,728	185,889	48,510	34,783	▲29,460
	10	1,959,164	1,266,363	-	-	-	-	-	-	-	-	-	-	548,582	201,498	106,286	-	-	344,090	118,044	166,189	37,720	23,980	87,688
	11	1,852,095	1,179,599	-	-	-	-	-	-	-	-	-	-	534,921	213,473	85,384	-	-	315,015	116,889	141,933	28,851	21,843	51,747
	12	1,680,268	1,047,750	-	-	-	-	-	-	-	-	-	-	535,128	231,813	99,121	-	-	298,306	126,047	133,287	26,125	19,518	54,547
5年	1月	2,004,967	1,285,026	-	-	-	-	-	-	-	-	-	-	694,715	294,362	174,434	-	-	374,276	135,295	175,810	24,745	28,716	42,312
	2	1,811,732	1,125,933	-	-	-	-	-	-	-	-	-	-	576,980	243,009	99,896	-	-	330,330	96,548	145,218	37,482	41,283	61,859
	3	1,905,234	1,262,738	-	-	-	-	-	-	-	-	-	-	549,679	219,265	106,051	-	-	333,110	98,501	175,104	39,353	30,896	48,732
	4	1,526,098	959,386	-	-	-	-	-	-	-	-	-	-	519,864	235,662	110,584	-	-	284,599	97,888	153,150	27,026	18,778	50,943
	5	1,632,092	995,131	-	-	-	-	-	-	-	-	-	-	561,992	192,335	94,469	-	-	365,730	100,540	180,943	29,671	32,694	36,004
	6	1,602,203	955,580	-	-	-	-	-	-	-	-	-	-	569,511	179,621	112,636	-	-	402,704	112,215	201,095	34,779	29,501	34,939
	7	1,347,443	799,552	-	-	-	-	-	-	-	-	-	-	446,937	200,484	102,691	-	-	267,893	86,609	125,892	27,912	18,225	70,250
	8	1,520,057	951,959	-	-	-	-	-	-	-	-	-	-	467,114	183,598	74,223	-	-	280,759	93,691	127,461	36,483	27,451	86,214
	9	1,631,011	947,425	-	-	-	-	-	-	-	-	-	-	529,056	240,004	103,533	-	-	284,799	120,359	121,731	22,508	24,856	86,680
	10	1,521,165	910,132	-	-	-	-	-	-	-	-	-	-	505,883	230,587	98,667	-	-	272,006	73,836	147,216	24,585	35,727	61,484
	11	1,575,109	891,652	-	-	-	-	-	-	-	-	-	-	523,447	255,781	92,976	-	-	275,742	94,697	114,389	29,338	27,490	66,784
	12	1,617,885	988,386	-	-	-	-	-	-	-	-	-	-	529,588	230,971	93,624	-	-	289,993	74,715	144,037	46,248	30,313	69,564
6年	1月	1,722,793	1,013,998	-	-	-	-	-	-	-	-	-	-	619,929	249,942	108,295	-	-	338,076	98,685	170,686	31,515	47,989	80,041
	2	1,623,467	992,340	-	-	-	-	-	-	-	-	-	-	514,319	193,849	84,419	-	-	323,958	104,398	158,428	36,901	20,010	70,875
	3	1,583,771	912,660	-	-	-	-	-	-	-	-	-	-	580,421	247,255	136,441	-	-	335,241	112,023	153,838	42,798	30,444	56,309
	4	1,529,950	887,020	-	-	-	-	-	-	-	-	-	-	569,041	204,368	105,204	-	-	387,507	100,392	200,504	53,642	30,753	71,177
	5	1,366,143	861,225	-	-	-	-	-	-	-	-	-	-	389,094	173,225	74,695	-	-	234,700	70,372	109,749	11,151	35,798	68,017
	6	1,558,557	920,705	-	-	-	-	-	-	-	-	-	-	495,748	206,688	81,680	-	-	306,567	92,651	137,578	51,168	21,755	87,958
	7	1,593,316	987,642	-	-	-	-	-	-	-	-	-	-	508,388	173,831	71,921	-	-	357,804	117,407	145,338	40,334	32,612	64,245
	8	1,684,439	1,094,464	-	-	-	-	-	-	-	-	-	-	519,245	190,275	86,565	-	-	318,266	92,729	153,455	26,193	55,367	52,274
	9	1,507,750	928,677	-	-	-	-	-	-	-	-	-	-	484,295	170,432	53,262	-	-	304,782	94,692	138,050	38,844	33,005	3,544
	10	1,630,771	973,635	-	-	-	-	-	-	-	-	-	-	510,081	236,135	98,922	-	-	270,363	101,266	134,488	26,315	13,086	94,201
	11	1,905,098	1,026,721	-	-	-	-	-	-	-	-	-	-	693,765	273,582	153,629	-	-	408,381	160,932	178,362	52,672	22,225	81,614
	12	1,721,158	1,055,992	-	-	-	-	-	-	-	-	-	-	545,696	257,440	150,807	-	-	287,872	101,4				

4	1,652,916	1,020,611	-	-	-	-	-	-	-	-	-	549,976	278,014	117,116	-	-	282,961	82,841	149,992	30,506	38,263	94,494	
5	1,762,477	1,036,911	-	-	-	-	-	-	-	-	-	561,374	349,022	139,566	-	-	301,910	92,992	128,795	23,940	43,562	107,498	
6	1,758,631	998,343	-	-	-	-	-	-	-	-	-	574,739	243,434	128,820	-	-	345,879	84,622	177,392	27,960	44,401	107,257	
7	1,620,329	900,799	-	-	-	-	-	-	-	-	-	623,957	239,477	121,079	-	-	421,077	83,188	185,704	87,997	40,618	67,787	
8	1,516,053	895,664	-	-	-	-	-	-	-	-	-	527,152	267,354	138,809	-	-	284,549	86,743	136,077	30,106	31,763	43,948	
9	1,560,469	871,757	-	-	-	-	-	-	-	-	-	526,246	247,669	118,588	-	-	260,103	101,983	103,059	24,723	36,134	105,509	
10	1,665,282	1,043,411	-	-	-	-	-	-	-	-	-	517,641	189,833	87,085	-	-	317,668	85,100	169,480	32,517	37,451	67,114	
11	1,713,572	901,742	-	-	-	-	-	-	-	-	-	617,859	235,638	133,857	-	-	367,014	108,111	183,197	36,514	37,764	107,645	
12	1,802,650	941,251	-	-	-	-	-	-	-	-	-	752,889	343,040	168,072	-	-	399,908	152,805	177,899	39,564	56,199	94,477	
8年 1月	1,714,550	882,083	-	-	-	-	-	-	-	-	-	739,599	247,216	131,681	-	-	476,414	175,758	153,620	72,622	50,573	83,859	
2	1,705,601	1,014,421	-	-	-	-	-	-	-	-	-	583,801	287,932	166,022	-	-	299,293	100,026	139,779	29,417	35,235	61,654	
3	1,556,465	895,379	-	-	-	-	-	-	-	-	-	541,225	249,746	128,659	-	-	289,384	76,627	144,002	28,151	35,545	80,186	
4	1,765,075	1,049,700	-	-	-	-	-	-	-	-	-	525,208	216,667	111,064	-	-	337,992	95,175	144,896	35,708	51,825	100,296	
5	1,606,311	979,966	-	-	-	-	-	-	-	-	-	482,753	205,480	107,992	-	-	288,555	89,614	131,925	22,200	24,622	112,193	
6	1,609,840	1,000,991	-	-	-	-	-	-	-	-	-	465,671	219,444	90,872	-	-	263,304	76,823	130,091	33,566	21,477	84,926	
7	1,613,434	995,144	-	-	-	-	-	-	-	-	-	477,931	246,201	90,370	-	-	262,430	84,541	122,363	28,748	17,797	87,337	
8	1,714,850	979,759	-	-	-	-	-	-	-	-	-	535,198	215,138	107,787	-	-	316,544	117,986	130,004	35,118	45,675	135,580	
9	2,436,094	1,630,942	-	-	-	-	-	-	-	-	-	640,142	263,645	112,209	-	-	358,882	58,347	182,611	44,601	68,101	124,235	
10	1,729,387	936,814	-	-	-	-	-	-	-	-	-	587,588	250,264	105,538	-	-	327,426	129,688	118,491	38,356	34,764	139,131	
11	1,528,274	889,924	-	-	-	-	-	-	-	-	-	489,825	186,780	85,068	-	-	290,774	93,513	127,141	27,199	40,404	82,297	
12	1,358,544	759,601	-	-	-	-	-	-	-	-	-	490,034	181,715	71,892	-	-	296,223	133,243	131,271	34,775	25,233	92,447	
9年 1月	1,619,342	976,842	-	-	-	-	-	-	-	-	-	499,928	232,587	117,644	-	-	252,611	80,598	117,121	26,640	20,597	117,352	
2	1,491,411	911,536	-	-	-	-	-	-	-	-	-	446,035	194,938	101,355	-	-	255,365	68,483	117,032	26,408	61,194	82,108	
3	1,589,452	983,170	-	-	-	-	-	-	-	-	-	462,833	210,982	108,464	-	-	259,665	78,334	123,209	22,992	34,675	153,626	
4	1,560,942	923,316	-	-	-	-	-	-	-	-	-	444,036	214,303	100,716	-	-	272,524	87,881	118,179	19,316	37,198	88,587	
5	1,755,021	1,159,821	-	-	-	-	-	-	-	-	-	453,917	234,339	84,422	-	-	246,798	57,426	131,885	23,330	17,677	108,281	
6	1,501,557	891,950	-	-	-	-	-	-	-	-	-	507,167	264,703	159,023	-	-	258,397	96,090	119,539	29,966	15,840	54,190	
7	1,680,286	1,018,129	-	-	-	-	-	-	-	-	-	479,376	207,041	121,951	-	-	299,579	91,236	124,750	29,244	39,840	130,418	
8	1,614,311	957,424	-	-	-	-	-	-	-	-	-	494,193	219,560	105,667	-	-	277,354	97,478	124,672	22,520	29,773	105,164	
9	1,627,696	1,039,534	-	-	-	-	-	-	-	-	-	437,132	169,635	56,423	-	-	258,632	80,305	119,104	23,713	37,253	106,375	
10	1,579,148	1,003,190	-	-	-	-	-	-	-	-	-	459,615	184,370	106,618	-	-	268,256	93,924	119,677	30,182	28,324	72,971	
11	1,659,270	1,041,884	-	-	-	-	-	-	-	-	-	476,887	198,865	85,115	-	-	275,834	81,377	116,826	24,981	52,950	80,028	
12	1,473,778	926,514	-	-	-	-	-	-	-	-	-	462,114	230,736	106,976	-	-	237,874	81,689	101,569	19,547	50,152	60,635	
10年 1月	1,402,146	984,208	-	-	-	-	-	-	-	-	-	356,306	182,867	91,189	-	-	166,226	43,496	60,173	22,226	35,957	61,189	
2	1,459,949	913,722	-	-	-	-	-	-	-	-	-	407,331	166,066	93,585	-	-	246,217	111,490	99,739	22,266	21,072	89,110	
3	1,388,711	872,645	-	-	-	-	-	-	-	-	-	405,774	175,072	95,026	-	-	232,232	92,526	85,342	24,143	31,977	86,860	
4	1,411,084	875,792	-	-	-	-	-	-	-	-	-	287,960	128,898	69,274	-	-	197,227	70,025	90,878	19,018	22,300	93,348	
5	1,330,436	884,792	-	-	-	-	-	-	-	-	-	405,899	155,831	75,504	-	-	236,493	72,718	92,468	25,024	32,735	40,979	
6	1,465,822	920,143	-	-	-	-	-	-	-	-	-	437,131	165,326	83,909	-	-	266,652	69,446	129,733	27,894	39,174	65,603	
7	1,448,499	889,236	-	-	-	-	-	-	-	-	-	455,442	270,700	109,733	-	-	210,435	69,350	86,725	22,123	29,805	72,008	
8	1,371,503	839,424	-	-	-	-	-	-	-	-	-	428,550	198,163	92,695	-	-	234,964	75,996	106,662	19,230	19,797	50,059	
9	1,462,059	843,713	-	-	-	-	-	-	-	-	-	520,573	281,674	154,800	-	-	228,047	72,579	112,865	20,168	20,589	41,884	
10	1,392,152	805,117	-	-	-	-	-	-	-	-	-	475,834	217,371	110,960	-	-	255,982	74,378	103,968	41,558	36,435	58,008	
11	1,284,075	807,220	-	-	-	-	-	-	-	-	-	420,922	228,486	112,319	-	-	202,467	63,407	91,417	23,902	21,234	17,103	
12	1,452,492	817,931	-	-	-	-	-	-	-	-	-	436,033	175,238	86,833	-	-	259,480	69,268	96,573	30,522	66,668	155,612	
11年 1月	1,216,275	768,421	-	-	-	-	-	-	-	-	-	417,666	184,218	69,351	-	-	223,128	65,230	120,426	20,883	8,386	52,267	
2	1,401,235	808,930	-	-	-	-	-	-	-	-	-	499,482	223,956	109,249	-	-	278,172	65,854	133,160	57,955	29,545	42,670	
3	1,429,899	888,299	-	-	-	-	-	-	-	-	-	503,176	234,886	106,962	-	-	266,050	65,002	139,769	35,429	29,157	▲ 80,245	
4	1,261,674	683,992	-	-	-	-	-	-	-	-	-	478,497	316,074	112,207	-	-	248,368	68,250	101,194	36,598	27,265	51,310	
5月	1,238,529	760,811	-	-	-	-	-	-	-	-	-	439,040	179,346	86,403	-	-	246,739	72,708	96,859	36,345	18,816	48,376	
6	1,217,201	773,572	-	-	-	-	-	-	-	-	-	370,253	188,088	115,278	-	-	192,702	59,185	83,838	20,371	37,347	41,852	
7	1,179,697	737,258	-	-	-	-	-	-	-	-	-	383,419	195,820	83,122	-	-	206,159	56,959	93,913	28,798	21,835	31,053	
8	1,275,937	784,052	-	-	-	-	-	-	-	-	-	404,640	196,728	104,177	-	-	211,262	71,815	86,598	22,386	22,289	37,763	
9	1,382,040	850,635	-	-	-	-	-	-	-	-	-	445,188	215,875	111,936	-	-	225,922	64,133	111,625	32,449	14,376	25,480	
10	1,184,223	794,726	-	-	-	-	-	-	-	-	-	310,993	143,721	83,082	-	-	169,045	59,552	64,420	16,523	24,628	45,481	
11	1,315,776	831,363	-	-	-	-	-	-	-	-	-	372,197	210,624	108,924	-	-	169,037	57,352	76,305	20,806	17,125	66,264	
12	1,274,724	890,552	-	-	-	-	-	-	-	-	-	297,290	156,928	62,795	-	-	147,606	55,741	73,114	14,467	15,674	41,477	
12年 1月	1,491,883	1,063,117	154,371	909,033	1,962	89,319	56,413	70,929	37,249	330,871	187,623	119,599	140,396	207,792	90,685	90,772	12,519	189,542	69,920	74,287	21,192	11,698	41,584
2	1,432,623	877,354	132,277	735,140	3,148	86,780	44,140	69,852	16,823	229,199	194,516	90,976	431,156	225,707	85,973	90,278	47,132	201,467	64,900	77,253	7,899	73,058	66,480
3	1,497,908	1,016,803	141,836	826,545	3,307	98,751	45,784	66,647	16,165	275,404	200,561	125,109	408,027	192,693	94,757	77,530	16,694	218,030	65,384	88,502	40,123	22,782	21,919
4	1,278,559	825,800	129,432	721,366	1,617	96,734	28,880	50,482	25,215	209,802	178,367	84,645	300,134	178,497	72,558	83,496	15,881	171,772	54,693	83,215	10,640	23,575	44,854
5	1,406,163																						

13年	7	1,105,895	698,941	135,002	556,341	1,023	88,066	20,099	42,612	15,800	171,425	152,477	69,398	339,857	174,265	92,792	52,438	24,698	181,686	55,790	68,626	19,772	37,555	19,172
	8	1,223,222	785,171	149,423	643,968	1,638	62,357	18,076	58,106	21,588	178,318	211,857	76,742	334,239	159,404	74,595	45,701	38,305	174,680	38,884	69,885	32,352	22,558	43,346
	9	1,255,915	800,358	134,915	659,197	1,593	64,941	29,719	43,081	20,519	250,151	176,161	66,591	340,702	174,969	79,752	50,670	36,487	164,356	53,988	64,559	27,248	20,920	52,767
	10	1,228,053	732,059	156,150	569,664	873	68,587	16,501	38,505	18,411	220,720	159,325	49,881	392,314	206,529	69,845	88,801	49,069	184,270	54,877	79,429	18,242	26,909	32,464
	11	1,296,088	789,716	162,276	621,185	2,657	69,529	18,660	39,969	17,950	202,462	214,842	62,841	388,227	180,880	86,910	70,413	21,579	197,713	82,931	77,834	28,144	16,301	61,938
	12	1,242,230	759,712	157,453	603,704	1,360	82,242	31,989	33,795	21,561	176,522	196,418	59,932	350,576	199,029	104,083	63,719	23,040	159,643	51,264	72,891	22,746	19,346	62,435
	1月	1,302,773	750,441	151,171	583,543	1,311	51,439	30,432	31,560	15,232	218,997	173,767	52,875	383,662	186,280	115,288	56,323	16,943	188,324	58,314	70,902	24,349	33,224	126,949
	2	1,227,017	803,387	153,688	630,357	982	83,225	45,005	30,749	15,322	199,456	187,337	66,724	302,920	154,402	73,983	57,743	26,062	148,008	47,936	72,719	18,011	19,162	55,594
	3	1,253,829	830,424	147,335	613,446	588	76,824	29,153	38,950	20,956	203,791	189,032	67,569	336,764	183,676	77,372	59,332	40,725	142,794	33,278	63,989	20,613	15,806	43,244
	4	1,105,377	671,669	147,953	561,849	948	76,440	13,659	34,815	27,185	228,705	147,979	57,845	350,430	140,225	76,910	45,449	15,405	245,387	74,408	66,063	22,222	34,562	38,115
	5	1,138,519	716,049	137,839	600,741	708	72,239	46,508	18,868	30,790	207,643	165,030	60,912	348,072	205,066	79,714	140,322	30,042	146,985	33,791	72,519	15,454	25,339	45,899
	6	1,190,938	739,812	146,739	595,664	626	98,097	20,836	33,275	23,670	189,278	165,292	59,039	351,114	169,593	86,439	62,785	26,708	190,787	48,063	63,332	74,478	26,579	55,675
	7	1,252,751	839,502	131,966	721,612	1,009	69,884	21,797	37,161	118,961	256,719	156,904	88,576	319,106	155,365	85,319	62,648	16,892	174,035	48,512	81,050	19,603	18,495	34,677
	8	1,270,041	779,227	121,367	668,012	859	99,779	20,509	37,414	31,096	241,327	173,762	56,601	370,122	251,232	120,548	99,274	29,250	154,512	46,739	65,401	18,783	17,058	48,862
	9	1,137,332	732,539	105,377	621,452	990	79,651	22,198	44,234	25,392	205,382	190,344	52,414	303,566	158,536	60,884	54,588	36,991	142,878	32,745	65,840	12,773	28,252	34,547
	10	1,161,714	764,456	108,219	678,717	278	103,453	18,202	74,954	23,307	224,391	162,934	57,141	289,799	173,403	84,458	52,038	37,364	116,736	33,470	47,601	12,652	17,387	44,209
	11	1,174,625	718,010	91,535	646,922	1,073	90,861	31,397	41,767	27,108	231,888	150,898	78,305	284,641	138,523	76,312	42,029	26,143	137,577	62,946	53,115	16,009	14,699	110,834
	12	1,163,533	728,056	93,410	617,369	524	93,873	15,090	30,920	30,196	257,045	164,985	35,576	315,993	176,061	92,896	46,140	26,704	148,251	40,589	59,022	35,950	16,245	55,355
14年	1月	1,113,736	731,764	81,206	640,939	177	76,859	14,666	36,705	28,466	213,652	220,536	44,137	329,514	181,726	71,358	50,415	78,012	144,431	43,451	54,305	28,790	18,857	39,938
	2	1,165,041	718,518	82,621	597,575	584	59,507	14,253	34,812	30,928	225,322	190,107	40,606	341,045	202,380	84,779	30,192	60,944	132,004	36,219	59,679	21,607	19,837	41,795
	3	1,110,575	697,226	92,306	527,357	726	61,137	17,145	30,402	25,795	203,754	164,713	37,700	297,980	161,674	80,472	45,786	25,622	136,491	37,167	52,495	22,559	14,325	94,548
	4	972,729	620,416	84,301	613,883	1,481	66,488	15,920	34,673	15,157	209,344	188,155	43,551	297,470	201,392	103,866	37,512	58,529	117,378	42,425	50,330	15,390	7,441	41,637
	5	1,139,800	668,181	80,554	630,921	677	70,550	12,236	38,884	17,843	258,148	166,056	68,422	411,369	205,161	98,716	39,572	120,354	189,938	47,590	86,955	20,264	20,814	62,063
	6	937,185	630,677	75,570	584,089	981	56,895	20,375	28,893	17,770	241,242	173,208	40,005	212,196	108,731	62,430	31,975	16,135	108,168	41,834	51,492	12,841	9,023	50,862
	7	1,166,426	689,078	118,457	599,368	1,851	63,189	23,054	43,386	18,441	206,966	206,588	41,875	340,630	240,059	142,418	106,610	34,182	117,549	37,918	55,529	17,379	6,050	75,985
	8	1,069,100	681,856	91,561	582,668	855	69,031	23,037	31,555	16,407	213,474	185,039	39,732	286,366	152,652	80,911	55,995	17,617	142,971	34,600	65,019	23,840	12,827	45,690
	9	1,080,734	678,834	104,216	565,483	901	59,756	19,205	38,187	21,349	209,980	169,095	44,125	299,579	148,899	83,918	46,710	13,819	148,802	47,550	57,580	22,410	26,725	66,464
	10	1,206,716	774,858	91,198	729,745	1,400	65,955	14,888	34,783	27,509	354,704	192,286	44,596	300,996	151,191	101,433	37,971	13,308	146,555	44,802	62,919	24,951	8,733	65,698
	11	1,053,830	674,333	95,529	577,640	108	53,242	14,551	39,233	14,087	234,785	180,185	39,858	314,434	147,744	92,651	33,214	32,618	159,920	35,814	57,078	42,054	35,311	39,077
	12	1,020,294	619,637	90,674	545,585	954	48,602	8,769	40,262	13,166	202,021	179,370	47,744	320,031	181,358	85,551	56,221	30,029	141,006	56,287	55,416	17,948	18,872	22,168
15年	1月	995,588	668,732	108,002	545,289	1,883	61,208	12,867	40,519	19,343	184,310	180,385	43,923	266,444	143,170	95,785	28,351	22,293	119,128	27,823	56,648	28,223	14,673	48,724
	2	1,051,237	695,715	105,564	535,328	1,136	64,998	14,614	37,376	14,436	207,236	155,482	35,649	274,246	143,283	88,718	47,157	11,104	135,144	43,690	45,249	30,339	11,616	37,514
	3	1,035,907	689,615	94,375	501,188	1,294	64,344	11,312	26,294	19,647	179,199	176,922	40,425	253,806	142,733	76,187	33,687	22,423	111,625	40,944	36,831	17,331	11,252	32,006
	4	1,070,646	677,484	-	-	-	-	-	-	-	-	-	-	334,098	154,964	81,767	-	177,988	33,794	104,783	31,731	5,726	73,414	-
	5	1,096,895	776,989	-	-	-	-	-	-	-	-	-	-	244,404	136,751	74,536	-	102,545	27,474	45,085	23,831	6,204	49,573	-
	6	1,018,995	698,964	-	-	-	-	-	-	-	-	-	-	262,253	131,155	71,361	-	129,933	36,694	64,238	22,870	11,958	27,328	-
	7	1,047,208	685,043	-	-	-	-	-	-	-	-	-	-	249,121	136,543	57,652	-	122,033	38,340	55,488	13,972	12,143	49,458	-
	8	1,048,148	702,871	-	-	-	-	-	-	-	-	-	-	257,061	149,435	87,083	-	118,926	29,061	54,542	18,504	12,874	36,720	-
	9	1,032,848	693,357	-	-	-	-	-	-	-	-	-	-	255,185	142,723	78,128	-	113,680	30,620	47,611	21,406	13,569	45,167	-
	10	1,104,277	736,747	-	-	-	-	-	-	-	-	-	-	256,920	145,605	66,813	-	112,028	39,595	50,715	7,285	9,324	55,536	-
	11	1,095,898	789,689	-	-	-	-	-	-	-	-	-	-	225,733	134,282	73,400	-	99,204	29,769	49,575	15,286	11,388	46,346	-
	12	1,091,252	724,588	-	-	-	-	-	-	-	-	-	-	244,722	135,066	65,530	-	109,150	29,495	49,606	21,401	11,771	67,250	-
16年	1月	1,057,802	688,316	-	-	-	-	-	-	-	-	-	-	296,190	181,936	89,183	-	115,343	36,371	64,059	14,596	8,380	58,014	-
	2	1,010,103	676,635	-	-	-	-	-	-	-	-	-	-	234,356	135,731	72,019	-	100,836	32,825	49,181	15,915	6,594	56,727	-
	3	1,039,578	700,054	-	-	-	-	-	-	-	-	-	-	246,063	134,395	73,218	-	104,059	22,104	50,694	16,832	7,813	8,093	-
	4	1,112,226	814,843	-	-	-	-	-	-	-	-	-	-	198,090	75,491	48,253	-	117,479	31,072	59,215	18,228	7,197	64,056	-
	5	1,098,490	785,270	-	-	-	-	-	-	-	-	-	-	229,613	119,918	62,574	-	110,887	30,893	40,246	21,846	16,269	48,911	-
	6	1,177,940	855,804	-	-	-	-	-	-	-	-	-	-	215,551	99,472	36,977	-	106,729	34,228	52,362	18,325	10,533	68,455	-
	7	1,129,308	776,703	-	-	-	-	-	-	-	-	-	-	234,994	147,643	59,504	-	100,065	26,231	41,854	13,456	19,793	44,809	-

23年 1月	785,458	535,612	-	-	-	-	-	-	-	-	-	-	-	166,981	96,344	42,282	-	-	76,312	17,530	18,356	10,344	29,242	41,639
2	900,273	648,627	-	-	-	-	-	-	-	-	-	-	-	175,011	107,139	46,054	-	-	64,502	19,895	27,787	15,001	2,074	55,759
3	949,165	665,983	-	-	-	-	-	-	-	-	-	-	-	156,222	89,810	38,080	-	-	64,476	8,677	32,477	9,633	6,486	24,284
4	852,691	563,075	-	-	-	-	-	-	-	-	-	-	-	199,672	113,830	56,701	-	-	83,022	18,230	51,916	17,348	7,247	63,102
5	935,674	609,982	-	-	-	-	-	-	-	-	-	-	-	198,383	224,494	41,288	-	-	47,751	13,106	26,162	17,893	1,327	72,577
6	842,890	627,734	-	-	-	-	-	-	-	-	-	-	-	159,121	99,793	48,510	-	-	59,064	12,326	21,730	17,474	8,587	38,828
7	857,274	637,973	-	-	-	-	-	-	-	-	-	-	-	160,874	101,375	48,546	-	-	60,831	16,577	26,726	11,840	5,599	34,720
8	867,359	609,682	-	-	-	-	-	-	-	-	-	-	-	183,783	69,541	38,960	-	-	111,531	47,332	35,254	8,416	16,559	60,061
9	847,191	560,461	-	-	-	-	-	-	-	-	-	-	-	235,845	88,472	46,140	-	-	166,155	172,228	31,657	10,247	2,587	▲ 14,159
10	960,345	607,666	-	-	-	-	-	-	-	-	-	-	-	292,991	113,242	64,734	-	-	138,316	104,191	23,577	14,356	7,221	31,655
11	973,144	634,483	-	-	-	-	-	-	-	-	-	-	-	210,828	130,340	66,688	-	-	76,086	10,051	11,824	24,220	23,137	85,353
12	938,258	653,464	-	-	-	-	-	-	-	-	-	-	-	196,892	105,914	56,897	-	-	93,237	44,273	21,782	23,452	5,221	48,668
24年 1月	984,194	656,993	-	-	-	-	-	-	-	-	-	-	-	237,293	169,016	89,723	-	-	64,280	21,111	17,563	20,388	4,188	52,092
2	863,969	591,425	-	-	-	-	-	-	-	-	-	-	-	207,245	123,967	61,149	-	-	75,321	27,745	24,322	18,807	2,581	49,311
3	974,133	642,123	-	-	-	-	-	-	-	-	-	-	-	218,206	136,946	73,995	-	-	74,806	24,542	25,928	19,688	2,473	39,952
4	974,057	659,612	-	-	-	-	-	-	-	-	-	-	-	232,610	143,544	60,639	-	-	75,540	31,464	28,896	10,117	2,054	47,863
5	870,952	599,075	-	-	-	-	-	-	-	-	-	-	-	216,502	136,789	72,647	-	-	113,571	48,747	34,018	19,358	7,717	28,444
6	892,854	628,601	-	-	-	-	-	-	-	-	-	-	-	224,026	131,417	44,512	-	-	95,669	40,698	33,541	18,256	1,402	25,478
7	903,270	609,555	-	-	-	-	-	-	-	-	-	-	-	250,770	169,211	114,536	-	-	85,116	20,793	24,652	14,375	28,775	15,294
8	914,387	618,499	-	-	-	-	-	-	-	-	-	-	-	244,314	156,990	91,951	-	-	87,336	23,448	29,198	18,726	22,216	35,800
9	906,757	577,502	-	-	-	-	-	-	-	-	-	-	-	192,587	144,058	64,009	-	-	73,643	16,320	30,542	18,116	27,050	80,200
10	800,679	547,207	-	-	-	-	-	-	-	-	-	-	-	173,468	131,820	68,087	-	-	38,105	▲ 14,909	31,660	12,536	18,527	36,981
11	948,793	644,986	-	-	-	-	-	-	-	-	-	-	-	207,003	94,904	48,699	-	-	103,528	18,978	38,301	16,090	10,773	32,601
12	993,803	678,115	-	-	-	-	-	-	-	-	-	-	-	241,417	158,813	54,670	-	-	83,615	13,301	25,937	11,184	40,176	34,825
25年 1月	940,573	641,193	-	-	-	-	-	-	-	-	-	-	-	237,208	127,881	69,868	-	-	122,987	22,204	47,544	20,037	25,294	27,359
2	1,015,878	740,006	-	-	-	-	-	-	-	-	-	-	-	235,006	136,419	63,327	-	-	93,948	20,812	51,711	23,237	7,320	56,351
3	953,794	635,085	-	-	-	-	-	-	-	-	-	-	-	218,995	129,565	58,474	-	-	80,843	22,554	37,777	14,515	1,778	72,563
4	994,168	665,494	-	-	-	-	-	-	-	-	-	-	-	254,912	172,067	70,454	-	-	59,032	25,423	22,271	14,252	4,700	42,988
5	1,059,083	740,032	-	-	-	-	-	-	-	-	-	-	-	264,936	298,525	79,125	-	-	81,878	19,710	37,070	19,656	11,416	39,325
6	1,082,544	698,590	-	-	-	-	-	-	-	-	-	-	-	244,595	195,452	117,335	-	-	78,919	12,523	41,866	6,277	8,664	102,343
7	1,006,660	608,080	-	-	-	-	-	-	-	-	-	-	-	249,743	156,490	85,174	-	-	99,326	20,996	46,136	20,320	6,486	102,982
8	1,107,051	785,196	-	-	-	-	-	-	-	-	-	-	-	291,631	186,354	133,169	-	-	112,046	28,549	61,507	17,830	2,182	36,233
9	1,770,604	1,322,104	-	-	-	-	-	-	-	-	-	-	-	300,794	192,473	83,557	-	-	139,850	32,858	94,994	24,531	3,869	41,928
10	1,267,747	872,360	-	-	-	-	-	-	-	-	-	-	-	270,379	178,967	85,956	-	-	81,046	26,380	32,861	22,051	3,767	49,540
11	992,958	554,941	-	-	-	-	-	-	-	-	-	-	-	279,078	172,266	83,075	-	-	94,618	16,522	41,480	15,456	2,380	82,720
12	1,037,631	644,422	-	-	-	-	-	-	-	-	-	-	-	316,252	162,967	91,134	-	-	138,615	31,923	82,578	22,273	2,874	35,215
26年 1月	1,081,923	677,695	-	-	-	-	-	-	-	-	-	-	-	273,533	175,993	87,407	-	-	96,653	31,425	43,154	11,727	1,271	80,495
2	1,122,591	608,669	-	-	-	-	-	-	-	-	-	-	-	324,095	179,203	89,805	-	-	140,196	94,311	33,199	16,649	4,046	190,902
3	887,907	479,121	-	-	-	-	-	-	-	-	-	-	-	313,635	178,738	87,467	-	-	122,341	84,076	33,144	22,351	3,841	40,335
4	2,036,243	883,457	-	-	-	-	-	-	-	-	-	-	-	1,307,668	973,263	121,883	-	-	153,605	49,577	48,699	22,458	9,631	46,491
5	1,198,656	702,160	-	-	-	-	-	-	-	-	-	-	-	396,078	426,952	177,074	-	-	143,239	42,241	73,002	20,669	8,223	81,954
6	1,146,895	698,045	-	-	-	-	-	-	-	-	-	-	-	382,434	289,628	102,459	-	-	135,609	57,933	46,600	19,622	5,930	40,755
7	1,233,472	740,286	-	-	-	-	-	-	-	-	-	-	-	368,413	245,713	102,929	-	-	140,597	57,095	54,304	9,154	7,129	91,328
8	1,181,552	657,805	-	-	-	-	-	-	-	-	-	-	-	332,925	224,737	97,277	-	-	117,818	49,936	32,899	32,976	7,302	182,375
9	1,075,396	723,561	-	-	-	-	-	-	-	-	-	-	-	208,864	139,771	107,738	-	-	87,763	27,479	30,147	38,587	6,481	53,921
10	1,444,183	825,833	-	-	-	-	-	-	-	-	-	-	-	375,839	198,867	104,527	-	-	158,864	70,100	66,316	16,326	3,489	126,422
11	1,188,806	745,235	-	-	-	-	-	-	-	-	-	-	-	345,094	182,948	119,556	-	-	148,472	56,536	47,550	10,406	4,878	17,752
12	1,133,655	685,541	-	-	-	-	-	-	-	-	-	-	-	302,100	178,952	139,248	-	-	108,245	47,419	42,196	17,133	6,102	107,072
27 1月	1,396,509	995,103	-	-	-	-	-	-	-	-	-	-	-	356,111	215,948	110,990	-	-	154,551	42,555	61,939	9,886	11,532	24,487
2	1,125,789	917,255	-	-	-	-	-	-	-	-	-	-	-	248,761	152,184	85,417	-	-	87,571	37,188	49,753	15,036	1,878	25,544
3	962,671	643,943	-	-	-	-	-	-	-	-	-	-	-	285,711	146,907	60,977	-	-	120,666	8,446	73,318	33,206	715	▲ 52,157
4	1,789,924	1,170,088	-	-	-	-	-	-	-	-	-	-	-	487,739	276,411	154,080	-	-	180,475	38,068	91,013	41,597	5,896	47,492
5	1,117,534	789,059	-	-	-	-	-	-	-	-	-	-	-	284,687	360,179	177,142	-	-	83,341	29,663	52,468	17,507	37	31,840
6	1,311,839	845,679	-	-	-	-	-	-	-	-	-	-	-	342,335	318,283	152,600	-	-	87,159	23,539	29,059	9,896	17,358	84,486
7	1,173,885	828,184	-	-	-	-	-	-	-	-	-	-	-	311,833	254,759	71,173	-	-	86,812	27,196	37,057	14,697	3,043	8,284
8	986,504	707,285	-	-	-	-	-	-	-	-	-	-	-	249,552	187,565	52,479	-	-	71,297	14,625	28,616	25,428	2,840	49,556
9	1,171,568	840,004	-	-	-	-	-	-	-	-	-	-	-	216,497	146,535	101,492	-	-	89,313	21,534	59,340	10,393	5,906	13,751
10	1,076,614	652,006	-	-	-	-	-	-	-	-	-	-	-	313,149	180,618	75,453	-	-	123,853	65,773	34,631	8,756	2,627	26,650
11	1,245,635	679,238	-	-	-	-	-	-	-	-	-	-	-	374,275	246,618	97,504	-	-	110,671	15,655	45,014	24,382	13,109	88,676

(單位:%)

昭和60年	4月	-	-	-	-	-	-	-	-	-	-	-	-	-	-	-	-	-	-	-	-		
	5	14.7	25.3	-	-	-	-	-	-	-	-	-	▲0.7	2.3	157.0	-	-	▲4.1	▲18.3	1.4	28.7	▲10.8	▲10.4
	6	▲7.0	▲18.8	-	-	-	-	-	-	-	-	-	4.4	▲6.1	▲34.6	-	-	10.7	▲16.0	18.6	47.8	30.2	17.9
	7	0.8	▲6.1	-	-	-	-	-	-	-	-	-	0.5	11.1	▲4.3	-	-	▲8.8	▲11.7	▲7.4	▲3.2	▲15.7	▲2.7
	8	▲0.5	15.8	-	-	-	-	-	-	-	-	-	▲5.5	▲18.4	9.6	-	-	7.4	13.1	7.3	▲11.3	▲10.4	▲29.0
	9	6.9	14.7	-	-	-	-	-	-	-	-	-	4.6	▲0.1	▲8.1	-	-	▲3.0	7.6	▲4.5	▲30.7	27.9	▲8.8
	10	22.2	▲0.7	-	-	-	-	-	-	-	-	-	0.8	25.4	30.5	-	-	▲8.5	4.3	▲6.6	22.9	▲42.3	333.6
	11	▲17.1	▲6.6	-	-	-	-	-	-	-	-	-	3.3	▲9.7	▲19.0	-	-	23.5	▲10.2	23.4	35.6	6.1	▲70.6
	12	▲13.5	▲5.3	-	-	-	-	-	-	-	-	-	4.9	8.4	▲15.4	-	-	▲2.9	▲4.3	▲12.2	114.7	8.8	▲56.8
61年	1月	15.6	▲8.2	-	-	-	-	-	-	-	-	-	▲9.6	▲2.8	42.0	-	-	▲24.0	35.7	▲25.6	▲41.7	6.6	435.5
	2	2.0	18.6	-	-	-	-	-	-	-	-	-	18.3	6.5	▲34.2	-	-	41.6	1.8	24.6	23.7	21.7	▲58.9
	3	6.1	13.5	-	-	-	-	-	-	-	-	-	5.0	1.8	64.9	-	-	10.0	▲8.8	72.3	▲22.4	16.1	▲37.7
	4	▲20.2	▲21.4	-	-	-	-	-	-	-	-	-	▲34.6	▲15.6	▲23.4	-	-	▲45.7	▲8.8	▲45.9	▲60.4	▲65.5	50.3
	5	16.2	10.1	-	-	-	-	-	-	-	-	-	51.5	8.5	28.0	-	-	90.2	55.1	32.0	161.2	187.8	▲15.5
	6	1.8	2.0	-	-	-	-	-	-	-	-	-	▲13.6	▲3.8	2.4	-	-	▲17.7	▲27.1	▲0.2	▲40.8	▲3.8	18.0
	7	▲0.1	▲0.3	-	-	-	-	-	-	-	-	-	4.3	3.6	▲2.4	-	-	5.2	▲13.3	0.4	55.9	19.6	▲77.7
	8	7.9	5.1	-	-	-	-	-	-	-	-	-	14.4	▲0.7	▲10.1	-	-	23.4	42.8	8.3	113.2	▲23.1	239.6
	9	▲6.4	▲4.8	-	-	-	-	-	-	-	-	-	▲0.7	8.1	14.4	-	-	▲14.8	▲9.2	▲3.3	▲50.9	▲17.8	17.9
	10	▲2.5	▲5.1	-	-	-	-	-	-	-	-	-	▲10.9	▲20.5	▲25.0	-	-	10.4	12.0	▲4.7	43.7	28.4	28.6
	11	0.9	8.2	-	-	-	-	-	-	-	-	-	▲15.9	▲2.9	▲18.2	-	-	▲22.3	▲20.9	▲36.6	▲37.9	8.8	4.7
	12	9.7	11.7	-	-	-	-	-	-	-	-	-	52.8	94.3	104.6	-	-	15.9	9.8	73.1	14.5	▲22.8	▲33.9
62年	1月	▲0.5	1.6	-	-	-	-	-	-	-	-	-	▲23.4	▲48.2	▲24.9	-	-	0.9	30.9	▲4.9	▲35.9	10.2	24.4
	2	▲4.2	1.6	-	-	-	-	-	-	-	-	-	▲12.6	14.7	▲3.0	-	-	▲27.0	▲59.0	▲10.8	8.3	▲2.1	▲20.1
	3	0.4	▲2.3	-	-	-	-	-	-	-	-	-	7.8	0.8	▲23.5	-	-	9.5	71.6	▲2.8	▲9.2	▲12.0	23.2
	4	▲4.8	▲3.3	-	-	-	-	-	-	-	-	-	▲7.3	▲7.6	10.5	-	-	7.0	16.7	2.3	▲2.2	▲18.2	▲53.3
	5	8.8	5.0	-	-	-	-	-	-	-	-	-	13.5	10.3	32.7	-	-	8.7	▲30.5	10.3	38.1	40.8	105.6
	6	5.0	▲0.5	-	-	-	-	-	-	-	-	-	15.7	21.2	▲11.8	-	-	13.8	84.6	▲7.4	45.4	▲13.1	▲18.3
	7	2.4	▲0.6	-	-	-	-	-	-	-	-	-	▲4.8	▲17.2	12.9	-	-	5.1	▲3.7	12.7	▲28.8	16.2	5.8
	8	▲2.9	2.4	-	-	-	-	-	-	-	-	-	▲4.0	11.7	▲0.8	-	-	▲13.0	▲38.3	▲2.3	▲4.4	9.5	0.1
	9	9.2	5.3	-	-	-	-	-	-	-	-	-	25.3	9.1	21.2	-	-	23.4	42.0	7.8	50.7	89.9	74.6
	10	▲0.4	3.5	-	-	-	-	-	-	-	-	-	▲19.7	▲20.2	▲24.7	-	-	▲12.0	▲16.7	4.3	▲34.3	▲30.6	▲10.1
	11	5.3	8.1	-	-	-	-	-	-	-	-	-	7.9	5.3	7.4	-	-	12.9	24.7	0.3	10.2	▲11.8	▲46.6
	12	▲9.4	▲7.1	-	-	-	-	-	-	-	-	-	3.0	4.6	1.1	-	-	▲0.9	5.2	▲0.3	▲9.5	52.4	2.3
63年	1月	4.7	6.0	-	-	-	-	-	-	-	-	-	▲2.2	13.1	▲6.1	-	-	▲17.6	▲16.3	▲0.7	24.0	▲25.2	▲38.2
	2	3.2	▲0.7	-	-	-	-	-	-	-	-	-	13.8	▲4.9	26.2	-	-	37.6	10.9	23.8	6.2	▲1.4	81.2
	3	▲6.5	▲3.3	-	-	-	-	-	-	-	-	-	▲11.7	▲8.9	▲17.3	-	-	▲7.0	22.5	▲25.0	8.3	▲14.9	▲82.2
	4	15.0	15.3	-	-	-	-	-	-	-	-	-	5.3	18.8	36.4	-	-	▲4.3	▲26.1	2.2	5.3	95.2	395.0
	5	▲4.3	▲4.2	-	-	-	-	-	-	-	-	-	▲7.0	▲13.6	▲22.0	-	-	▲6.8	▲4.3	1.7	▲31.2	▲36.5	27.1
	6	5.1	4.5	-	-	-	-	-	-	-	-	-	6.4	▲12.4	6.8	-	-	16.4	66.8	9.9	30.0	▲14.0	▲27.2
	7	15.4	12.2	-	-	-	-	-	-	-	-	-	6.9	45.0	9.7	-	-	▲8.7	▲18.2	▲7.0	▲22.4	1.8	58.5
	8	▲15.3	▲12.7	-	-	-	-	-	-	-	-	-	▲15.1	▲5.1	0.4	-	-	▲20.1	▲49.1	▲19.2	▲13.2	25.3	▲8.1
	9	▲10.3	▲7.5	-	-	-	-	-	-	-	-	-	▲7.7	▲41.2	▲34.6	-	-	16.3	33.0	21.0	20.3	9.6	▲19.0
	10	30.4	27.0	-	-	-	-	-	-	-	-	-	27.7	74.6	66.6	-	-	8.2	15.8	8.9	3.5	14.0	22.2
	11	▲9.0	▲10.3	-	-	-	-	-	-	-	-	-	▲9.0	▲4.6	1.5	-	-	▲7.6	▲3.4	▲19.6	10.4	▲25.1	▲9.6
	12	43.2	75.9	-	-	-	-	-	-	-	-	-	▲14.4	▲18.5	▲3.9	-	-	▲16.0	16.7	▲12.1	▲41.5	▲25.2	6.5
平成元年	1月	▲21.0	▲35.1	-	-	-	-	-	-	-	-	-	26.0	19.6	▲30.7	-	-	23.6	▲24.8	51.4	406.9	▲5.1	46.4
	2	▲17.4	▲13.4	-	-	-	-	-	-	-	-	-	▲17.8	▲27.7	▲8.6	-	-	▲5.0	36.6	▲33.7	▲77.1	▲5.8	▲25.0
	3	▲4.0	▲6.5	-	-	-	-	-	-	-	-	-	1.4	14.0	21.7	-	-	▲7.9	▲15.4	19.3	▲1.8	41.9	▲6.4
	4	31.0	31.4	-	-	-	-	-	-	-	-	-	24.5	6.1	▲6.4	-	-	48.3	36.2	39.0	121.9	17.2	46.3
	5	▲1.0	▲4.0	-	-	-	-	-	-	-	-	-	15.8	17.3	▲5.8	-	-	6.1	11.1	10.5	▲26.8	▲22.4	▲27.8
	6	▲4.2	▲1.8	-	-	-	-	-	-	-	-	-	▲16.2	4.9	32.7	-	-	▲24.2	▲24.2	▲19.4	▲30.7	37.6	22.3
	7	7.3	10.5	-	-	-	-	-	-	-	-	-	▲12.2	▲25.5	▲25.7	-	-	▲2.6	▲13.1	6.5	7.0	▲33.2	▲3.2
	8	▲0.6	▲1.7	-	-	-	-	-	-	-	-	-	19.5	28.9	24.7	-	-	14.4	35.8	▲6.0	63.9	7.1	22.1
	9	▲7.2	▲8.8	-	-	-	-	-	-	-	-	-	▲3.1	▲9.5	▲6.6	-	-	▲7.4	▲14.6	▲5.2	▲9.7	▲11.5	26.2
	10	11.9	16.6	-	-	-	-	-	-	-	-	-	2.6	13.3	47.6	-	-	3.2	8.0	14.3	▲22.9	30.7	▲37.6
	11	4.8	2.9	-	-	-	-	-	-	-	-	-	5.7	9.8	▲21.5	-	-	5.9	▲1.6	1.7	6.6	▲4.4	▲9.7
	12	1.3	2.8	-	-	-	-	-	-	-	-	-	2.3	▲9.2	▲19.2	-	-	7.0	▲9.6	8.7	85.6	22.4	59.4
2年	1月	▲4.5	▲3.6	-	-	-	-	-	-	-	-	-	▲27.7	▲32.5	27.1	-	-	▲29.1	▲7.2	▲18.8	▲29.2	▲21.0	▲16.4
	2	▲0.4	1.3	-	-	-	-	-	-	-	-	-	22.9	21.8	▲17.4	-	-	32.7	24.4	7.1	▲52.7	12.3	▲1.7
	3	3.6	1.9	-	-	-	-	-	-	-	-	-	9.0	18.2	19.8	-	-	6.4	▲20.7	34.3	130.6	▲6.3	12.3
	4	18.9	16.3	-	-	-	-	-	-	-	-	-	23.8	37.8	25.6	-	-	13.5	35.2	▲11.6	22.5	55.5	2.8
	5	▲2.3	1.5	-	-	-	-	-	-	-	-	-	▲17.9	▲29.1	▲55.2	-	-	▲12.8	▲20.0	▲13.2	▲1.3	▲33.5	▲9.5

	9	2.9	▲ 2.7	-	-	-	-	-	-	-	-	-	-	▲ 0.2	▲ 7.4	▲ 14.6	-	-	▲ 8.6	17.6	▲ 24.3	▲ 17.9	13.8	140.1
	10	6.7	19.7	-	-	-	-	-	-	-	-	-	-	▲ 1.6	▲ 23.4	▲ 26.6	-	-	22.1	▲ 16.6	64.5	31.5	3.6	▲ 36.4
	11	2.9	▲ 13.6	-	-	-	-	-	-	-	-	-	-	19.4	24.1	53.7	-	-	15.5	27.0	8.1	12.3	0.8	60.4
	12	5.2	4.4	-	-	-	-	-	-	-	-	-	-	21.9	45.6	25.6	-	-	9.0	41.3	▲ 2.9	8.4	48.8	▲ 12.2
8年	1月	▲ 4.9	▲ 6.3	-	-	-	-	-	-	-	-	-	-	▲ 1.8	▲ 27.9	▲ 21.7	-	-	19.1	15.0	▲ 13.6	83.6	▲ 10.0	▲ 11.2
	2	▲ 0.5	15.0	-	-	-	-	-	-	-	-	-	-	▲ 21.1	16.5	26.1	-	-	▲ 37.2	▲ 43.1	▲ 9.0	▲ 59.5	▲ 30.3	▲ 26.5
	3	▲ 8.7	▲ 11.7	-	-	-	-	-	-	-	-	-	-	▲ 7.3	▲ 13.3	▲ 22.5	-	-	▲ 3.3	▲ 23.4	3.0	▲ 4.3	0.9	30.1
	4	13.4	17.2	-	-	-	-	-	-	-	-	-	-	▲ 3.0	▲ 13.2	▲ 13.7	-	-	16.8	24.2	0.6	26.8	45.8	25.1
	5	▲ 9.0	▲ 6.6	-	-	-	-	-	-	-	-	-	-	▲ 8.1	▲ 5.2	▲ 2.8	-	-	▲ 14.6	▲ 5.8	▲ 9.0	▲ 37.8	▲ 52.5	11.9
	6	0.2	2.1	-	-	-	-	-	-	-	-	-	-	▲ 3.5	6.8	▲ 15.9	-	-	▲ 8.8	▲ 14.3	▲ 1.4	51.2	▲ 12.8	▲ 24.3
	7	0.2	▲ 0.6	-	-	-	-	-	-	-	-	-	-	2.6	12.2	▲ 0.6	-	-	▲ 0.3	10.0	▲ 5.9	▲ 14.4	▲ 17.1	2.8
	8	6.3	▲ 1.5	-	-	-	-	-	-	-	-	-	-	12.0	▲ 12.6	19.3	-	-	20.6	39.6	6.2	22.2	156.6	55.2
	9	42.1	66.5	-	-	-	-	-	-	-	-	-	-	19.6	22.5	4.1	-	-	13.4	▲ 50.5	40.5	27.0	49.1	▲ 8.4
	10	▲ 29.0	▲ 42.6	-	-	-	-	-	-	-	-	-	-	▲ 8.2	▲ 5.1	▲ 5.9	-	-	▲ 8.8	122.3	▲ 35.1	▲ 14.0	▲ 49.0	12.0
	11	▲ 11.6	▲ 5.0	-	-	-	-	-	-	-	-	-	-	▲ 16.6	▲ 25.4	▲ 19.4	-	-	▲ 11.2	▲ 27.9	7.3	▲ 29.1	16.2	▲ 40.8
	12	▲ 11.1	▲ 14.6	-	-	-	-	-	-	-	-	-	-	0.0	▲ 2.7	▲ 15.5	-	-	1.9	42.5	3.2	27.9	▲ 37.5	12.3
9年	1月	19.2	28.6	-	-	-	-	-	-	-	-	-	-	2.0	28.0	63.6	-	-	▲ 14.7	▲ 39.5	▲ 10.8	▲ 23.4	▲ 18.4	26.9
	2	▲ 7.9	▲ 6.7	-	-	-	-	-	-	-	-	-	-	▲ 10.8	▲ 16.2	▲ 13.8	-	-	1.1	▲ 15.0	▲ 0.1	▲ 0.9	197.1	▲ 30.0
	3	6.6	7.9	-	-	-	-	-	-	-	-	-	-	3.8	8.2	7.0	-	-	1.7	14.4	5.3	▲ 12.9	▲ 43.3	87.1
	4	▲ 1.8	▲ 6.1	-	-	-	-	-	-	-	-	-	-	▲ 4.1	1.6	▲ 7.1	-	-	5.0	12.2	▲ 4.1	▲ 16.0	7.3	▲ 42.3
	5	12.4	25.6	-	-	-	-	-	-	-	-	-	-	2.2	9.3	▲ 16.2	-	-	▲ 9.4	▲ 34.7	11.6	20.8	▲ 52.5	22.2
	6	▲ 14.4	▲ 23.1	-	-	-	-	-	-	-	-	-	-	11.7	13.0	88.4	-	-	4.7	67.3	▲ 9.4	28.4	▲ 10.4	▲ 50.0
	7	11.9	14.1	-	-	-	-	-	-	-	-	-	-	▲ 5.5	▲ 21.8	▲ 23.3	-	-	15.9	▲ 5.1	4.4	▲ 2.4	151.5	140.7
	8	▲ 3.9	▲ 6.0	-	-	-	-	-	-	-	-	-	-	3.1	6.0	▲ 13.4	-	-	▲ 7.4	6.8	▲ 0.1	▲ 23.0	▲ 25.3	▲ 19.4
	9	0.8	8.6	-	-	-	-	-	-	-	-	-	-	▲ 11.5	▲ 22.7	▲ 46.6	-	-	▲ 6.8	▲ 17.6	▲ 4.5	5.3	25.1	1.2
	10	▲ 3.0	▲ 3.5	-	-	-	-	-	-	-	-	-	-	5.1	8.7	89.0	-	-	3.7	17.0	0.5	27.3	▲ 24.0	▲ 31.4
	11	5.1	3.9	-	-	-	-	-	-	-	-	-	-	3.8	7.9	▲ 20.2	-	-	2.8	▲ 13.4	▲ 2.4	▲ 17.2	86.9	9.7
	12	▲ 11.2	▲ 11.1	-	-	-	-	-	-	-	-	-	-	▲ 3.1	16.0	25.7	-	-	▲ 13.8	0.4	▲ 13.1	▲ 21.8	▲ 5.3	▲ 24.2
10年	1月	▲ 4.9	6.2	-	-	-	-	-	-	-	-	-	-	▲ 22.9	▲ 20.7	▲ 14.8	-	-	▲ 30.1	▲ 46.8	▲ 40.8	13.7	▲ 28.3	0.9
	2	4.1	▲ 7.2	-	-	-	-	-	-	-	-	-	-	14.3	▲ 9.2	2.6	-	-	48.1	156.3	65.8	0.2	▲ 41.4	45.6
	3	▲ 4.9	▲ 4.5	-	-	-	-	-	-	-	-	-	-	▲ 0.4	5.4	1.5	-	-	▲ 5.7	▲ 17.0	▲ 14.4	8.4	51.8	▲ 2.5
	4	1.6	0.4	-	-	-	-	-	-	-	-	-	-	▲ 29.0	▲ 26.4	▲ 27.1	-	-	▲ 15.1	▲ 24.3	6.5	▲ 21.2	▲ 30.3	7.5
	5	▲ 5.7	1.0	-	-	-	-	-	-	-	-	-	-	41.0	20.9	9.0	-	-	19.9	3.8	1.7	31.6	46.8	▲ 56.1
	6	10.2	4.0	-	-	-	-	-	-	-	-	-	-	7.7	6.1	11.1	-	-	12.8	▲ 4.5	40.3	11.5	19.7	60.1
	7	▲ 1.2	▲ 3.4	-	-	-	-	-	-	-	-	-	-	4.2	63.7	30.8	-	-	▲ 21.1	▲ 0.1	▲ 33.2	▲ 20.7	▲ 23.9	9.8
	8	▲ 5.3	▲ 5.6	-	-	-	-	-	-	-	-	-	-	▲ 5.9	▲ 26.8	▲ 15.5	-	-	11.7	9.6	23.0	▲ 13.1	▲ 33.6	▲ 30.5
	9	6.6	0.5	-	-	-	-	-	-	-	-	-	-	21.5	42.1	67.0	-	-	▲ 2.9	▲ 4.5	5.8	4.9	4.0	▲ 16.3
	10	▲ 4.8	▲ 4.6	-	-	-	-	-	-	-	-	-	-	▲ 8.6	▲ 22.8	▲ 28.3	-	-	12.2	2.5	▲ 7.9	106.1	77.0	38.5
	11	▲ 7.8	0.3	-	-	-	-	-	-	-	-	-	-	▲ 11.5	5.1	1.2	-	-	▲ 20.9	▲ 14.8	▲ 12.1	▲ 42.5	▲ 41.7	▲ 70.5
	12	13.1	1.3	-	-	-	-	-	-	-	-	-	-	3.6	▲ 23.3	▲ 22.7	-	-	28.2	9.2	5.6	27.7	214.0	809.9
11年	1月	▲ 16.3	▲ 6.1	-	-	-	-	-	-	-	-	-	-	▲ 4.2	5.1	▲ 20.1	-	-	▲ 14.0	▲ 5.8	24.7	▲ 31.6	▲ 87.4	▲ 66.4
	2	15.2	5.3	-	-	-	-	-	-	-	-	-	-	19.6	21.6	57.5	-	-	24.7	1.0	10.6	177.5	252.3	▲ 18.4
	3	2.0	9.8	-	-	-	-	-	-	-	-	-	-	0.7	4.9	▲ 2.1	-	-	▲ 4.4	▲ 1.3	5.0	▲ 38.9	▲ 1.3	▲ 288.1
	4	▲ 11.8	▲ 23.0	-	-	-	-	-	-	-	-	-	-	▲ 4.9	34.6	4.9	-	-	▲ 6.6	5.0	▲ 27.6	3.3	▲ 6.5	▲ 163.9
	5月	▲ 1.8	11.2	-	-	-	-	-	-	-	-	-	-	▲ 8.2	▲ 43.3	▲ 23.0	-	-	▲ 0.7	6.5	▲ 4.3	▲ 0.7	▲ 31.0	▲ 5.7
	6	▲ 1.7	1.7	-	-	-	-	-	-	-	-	-	-	▲ 15.7	4.9	33.4	-	-	▲ 21.9	▲ 18.6	▲ 13.4	▲ 44.0	98.5	▲ 13.5
	7	▲ 3.1	▲ 4.7	-	-	-	-	-	-	-	-	-	-	3.6	4.1	▲ 27.9	-	-	7.0	▲ 3.8	12.0	41.4	▲ 41.5	▲ 25.8
	8	8.2	6.3	-	-	-	-	-	-	-	-	-	-	5.5	0.5	25.3	-	-	2.5	26.1	▲ 7.8	▲ 22.3	2.1	21.6
	9	8.3	8.5	-	-	-	-	-	-	-	-	-	-	10.0	9.7	7.4	-	-	6.9	▲ 10.7	28.9	45.0	▲ 35.5	▲ 32.5
	10	▲ 14.3	▲ 6.6	-	-	-	-	-	-	-	-	-	-	▲ 30.1	▲ 33.4	▲ 25.8	-	-	▲ 25.2	▲ 7.1	▲ 42.3	▲ 49.1	71.3	78.5
	11	11.1	4.6	-	-	-	-	-	-	-	-	-	-	19.7	46.6	31.1	-	-	▲ 0.0	▲ 3.7	18.5	25.9	▲ 30.5	45.7
	12	▲ 3.1	7.1	-	-	-	-	-	-	-	-	-	-	▲ 20.1	▲ 25.5	▲ 42.3	-	-	▲ 12.7	▲ 2.8	▲ 4.2	▲ 30.5	▲ 8.5	▲ 37.4
12年	1月	17.0	19.4	-	-	-	-	-	-	-	-	-	-	38.0	32.4	44.4	-	-	28.4	25.4	1.6	46.5	▲ 25.4	0.3
	2	▲ 4.0	▲ 17.5	▲ 14.3	▲ 19.1	60.4	▲ 2.8	▲ 21.8	▲ 1.5	▲ 54.8	▲ 30.7	3.7	▲ 23.9	5.1	8.6	▲ 5.2	▲ 0.5	276.5	6.3	▲ 7.2	4.0	▲ 62.7	524.5	59.9
	3	4.6	15.9	7.2	12.4	5.1	13.8	3.7	▲ 4.6	▲ 3.9	20.2	3.1	37.5	▲ 5.4	▲ 14.6	10.2	▲ 14.1	▲ 64.6	8.2	0.7	14.6	407.9	▲ 68.8	▲ 67.0
	4	▲ 14.6	▲ 18.8	▲ 8.7	▲ 12.7	▲ 51.1	▲ 2.0	▲ 36.9	▲ 24.3	56.0	▲ 23.8	▲ 11.1	▲ 32.3	▲ 26.4	▲ 7.4	▲ 23.4	7.7	▲ 4.9	▲ 21.2	▲ 16.4	▲ 6.0	▲ 73.5	3.5	104.6
	5	10.0	2.2	39.4	▲ 10.6	14.0	▲ 22.1	7.6	▲ 4.3	▲ 31.6	▲ 5.7	12.0	▲ 16.8	65.5	▲ 4.9	55.4	▲ 23.8	4.6	65.4	▲ 9.4	74.5	323.9	8.5	22.7
	6	▲ 2.5	▲ 3.5	▲ 22.6	5.8	53.9	▲ 23.7	▲ 39.1	26.5	41.1	4.3	9.8	7.6	▲ 24.1	45.8	▲ 26.8	80.8	273.7	▲ 44.0	3.2	▲ 46.2	▲ 67.9	▲ 10.0	114.6
	7	▲ 19.4	▲ 14.2	▲ 3.4	▲ 18.4	▲ 64.0	53.3	6.2	▲ 30.3	▲ 35.1	▲ 16.9	▲ 30.5	▲ 8.4	▲ 9.8	▲ 29.6	12.4	▲ 54.4	▲ 60.2	14.1	9.1	▲ 12.1	36.5	63.2	▲ 83.8
	8	10.6	12.3	10.7	15.8	60.1	▲ 29.2	▲ 10.1	36.4	36.6	4.0	38.9	10.6	▲ 1.7	▲ 8.5	▲ 19.6	▲ 12.8	55.1	▲ 3.9	▲ 30.3	1.8	63.6	▲ 39.9	126.1
	9	2.7	1.9	▲ 9.7	2.4	▲ 2.7	4.1	64.4	▲ 25.9	▲ 5.0	40.3	▲ 16.8	▲ 13.2	1.9	9.8	6.9	10.9	▲ 4.7	▲ 5.9	38.8	▲ 7.6	▲ 15.8	▲ 7.3	21.7
	10	▲ 2.2	▲ 8.5	15.7	▲ 13.6	▲ 45.2	5.6	▲ 44.5	▲ 10.6	▲ 10.3	▲ 11.8	▲ 9.6	▲ 25.1	15.1	18.0	▲ 12.4	75.3	34.5	12.1	1.6	23.0	▲ 33.1	28.6	▲ 38.5
	11	5.5	7.9	3.9	9.0	204.4	1.4	13.1	3.1	▲ 2.5	▲ 8.3	34.8	26.0	▲ 1.0	▲ 12.4	24.4	▲ 20.7	▲ 56.0	7.3	51.1	▲ 2.0	54.3	▲ 39.4	90.8

	12	▲ 4.2	▲ 3.8	▲ 3.0	▲ 2.8	▲ 48.8	18.3	71.4	▲ 14.9	20.1	▲ 12.8	▲ 8.6	▲ 4.6	▲ 9.7	10.0	19.8	▲ 9.5	6.8	▲ 19.3	▲ 38.2	▲ 6.4	▲ 19.2	18.7	0.8
13年	1月	4.9	▲ 1.2	▲ 4.0	▲ 3.3	▲ 3.6	▲ 37.5	▲ 4.9	▲ 6.6	▲ 29.4	24.1	▲ 11.5	▲ 11.8	▲ 9.4	▲ 6.4	10.8	▲ 11.6	▲ 6.8	▲ 19.3	▲ 38.2	▲ 6.4	▲ 19.2	18.7	0.8
	2	▲ 5.8	7.1	1.7	8.0	▲ 3.0	61.8	47.9	▲ 2.6	0.6	▲ 8.9	7.8	26.2	▲ 21.0	▲ 17.1	▲ 35.8	2.5	53.8	▲ 21.4	▲ 17.8	2.6	▲ 26.0	▲ 42.3	▲ 56.2
	3	2.2	▲ 3.4	▲ 4.1	▲ 2.7	▲ 40.1	▲ 7.7	▲ 35.2	26.7	36.8	2.2	0.9	1.3	11.2	19.0	4.6	2.8	56.3	▲ 3.5	▲ 30.6	▲ 12.0	14.4	▲ 17.5	▲ 22.2
	4	▲ 11.8	▲ 19.1	0.4	▲ 8.4	61.2	▲ 0.5	▲ 53.1	▲ 10.6	29.7	12.2	▲ 21.7	▲ 14.4	4.1	▲ 23.7	▲ 0.6	▲ 23.4	▲ 62.2	71.8	123.6	3.2	7.8	118.7	▲ 11.9
	5	3.0	6.6	▲ 6.8	6.9	▲ 25.3	▲ 5.5	240.5	▲ 45.8	13.3	▲ 9.2	11.5	5.3	▲ 0.7	46.2	3.6	208.7	95.0	▲ 40.1	▲ 54.6	9.8	▲ 30.5	▲ 26.7	20.4
	6	4.6	3.3	6.5	▲ 0.8	▲ 11.6	35.8	▲ 55.2	76.4	▲ 23.1	▲ 8.8	0.2	▲ 3.1	0.9	▲ 17.3	8.4	▲ 55.3	▲ 11.1	29.8	42.2	▲ 12.7	381.9	4.9	21.3
	7	5.2	13.5	▲ 10.1	21.1	61.2	▲ 28.8	4.6	11.7	402.6	35.6	▲ 5.1	50.0	▲ 9.1	▲ 8.4	▲ 1.3	▲ 0.2	▲ 36.8	▲ 8.8	0.9	28.0	▲ 30.4	▲ 37.7	
	8	1.4	▲ 7.2	▲ 8.0	▲ 7.4	▲ 14.9	42.8	▲ 5.9	0.7	▲ 73.9	▲ 6.0	10.7	▲ 36.1	16.0	61.7	41.3	58.5	73.2	▲ 11.2	▲ 3.7	▲ 19.3	▲ 4.2	▲ 7.8	40.9
	9	▲ 10.4	▲ 6.0	▲ 13.2	▲ 7.0	15.3	▲ 20.2	8.2	18.2	▲ 18.3	▲ 14.9	9.5	▲ 7.4	▲ 18.0	▲ 36.9	▲ 49.5	▲ 45.0	26.5	▲ 7.5	▲ 29.9	0.7	▲ 32.0	65.6	▲ 29.3
	10	2.1	4.4	2.7	9.2	▲ 71.9	29.9	▲ 18.0	69.4	▲ 8.2	9.3	▲ 14.4	9.0	▲ 4.5	9.4	38.7	▲ 4.7	1.0	▲ 18.3	2.2	▲ 27.7	▲ 0.9	▲ 38.5	28.0
	11	1.1	▲ 6.1	▲ 15.4	▲ 4.7	286.0	▲ 12.2	72.5	▲ 44.3	16.3	3.3	▲ 7.4	37.0	▲ 1.8	▲ 20.1	▲ 9.6	▲ 19.2	▲ 30.0	17.9	88.1	11.6	26.5	▲ 15.5	150.7
	12	▲ 0.9	1.4	2.0	▲ 4.6	▲ 51.2	3.3	▲ 51.9	▲ 26.0	11.4	10.8	9.3	▲ 54.6	11.0	27.1	21.7	9.8	2.1	7.8	▲ 35.5	11.1	124.6	10.5	▲ 50.1
14年	1月	▲ 4.3	0.5	▲ 13.1	3.8	▲ 66.2	▲ 18.1	▲ 2.8	18.7	▲ 5.7	▲ 16.9	33.7	24.1	4.3	3.2	▲ 23.2	9.3	192.1	▲ 2.6	7.1	▲ 8.0	▲ 19.9	16.1	▲ 27.9
	2	4.6	▲ 1.8	1.7	▲ 6.8	229.9	▲ 22.6	▲ 2.8	▲ 5.2	8.6	5.5	▲ 13.8	▲ 8.0	3.5	11.4	18.8	▲ 40.1	▲ 21.9	▲ 8.6	▲ 16.6	9.9	▲ 24.9	2.8	4.6
	3	▲ 4.7	▲ 3.0	11.7	▲ 11.8	24.3	2.7	20.3	▲ 12.7	▲ 16.6	▲ 9.6	▲ 13.4	▲ 7.2	▲ 12.6	▲ 20.1	▲ 5.1	51.6	▲ 58.0	3.4	2.6	▲ 12.0	4.4	▲ 26.1	126.2
	4	▲ 12.4	▲ 11.0	▲ 8.7	16.4	104.0	8.8	▲ 7.1	14.0	▲ 41.2	2.7	14.2	15.5	▲ 0.2	24.6	29.1	▲ 18.1	128.4	▲ 14.0	14.1	▲ 4.1	▲ 31.8	▲ 48.1	▲ 56.0
	5	17.2	7.7	▲ 4.4	2.8	▲ 54.3	6.1	▲ 23.1	12.1	17.7	23.3	▲ 11.7	57.1	38.3	1.9	▲ 5.0	5.5	105.6	61.8	12.2	72.8	31.7	179.7	49.1
	6	▲ 17.8	▲ 5.6	▲ 6.2	▲ 7.4	44.9	▲ 19.4	66.5	▲ 25.7	▲ 0.4	▲ 6.5	4.3	▲ 41.5	▲ 48.4	▲ 47.0	▲ 36.8	▲ 19.2	▲ 86.6	▲ 43.1	▲ 12.1	▲ 40.8	▲ 36.6	▲ 56.6	▲ 18.0
	7	24.5	9.3	56.8	2.6	88.7	11.1	13.1	50.2	3.8	▲ 14.2	19.3	4.7	60.5	120.8	128.1	233.4	111.9	8.7	▲ 9.4	7.8	35.3	▲ 33.0	49.4
	8	▲ 8.3	▲ 1.0	▲ 22.7	▲ 2.8	▲ 53.8	▲ 6.6	▲ 0.1	▲ 27.3	▲ 11.0	3.1	▲ 10.4	▲ 5.1	▲ 15.9	▲ 36.4	▲ 43.2	▲ 47.5	▲ 48.5	21.6	▲ 8.8	17.1	37.2	112.0	▲ 39.9
	9	1.1	▲ 0.4	13.8	▲ 2.9	5.4	1.2	▲ 16.6	21.0	30.1	▲ 1.6	▲ 8.6	11.1	4.6	2.5	3.7	▲ 16.6	▲ 21.6	4.1	37.4	▲ 11.4	▲ 6.0	108.3	45.5
	10	11.7	▲ 12.5	▲ 13.1	29.0	55.4	10.4	▲ 22.5	▲ 8.9	28.9	68.9	13.7	1.1	0.5	1.5	20.9	▲ 18.7	▲ 3.7	▲ 1.5	▲ 5.8	9.3	11.3	▲ 67.3	▲ 1.2
	11	▲ 12.7	▲ 13.0	4.7	▲ 20.8	▲ 92.3	▲ 19.3	▲ 2.3	12.8	▲ 48.8	▲ 33.8	▲ 6.3	▲ 10.6	4.5	▲ 2.3	▲ 8.7	▲ 12.5	145.1	9.1	▲ 20.1	▲ 9.3	68.5	304.4	▲ 40.5
15年	1月	▲ 3.2	▲ 8.1	▲ 5.1	▲ 5.5	783.3	▲ 8.7	▲ 39.7	2.6	▲ 6.5	▲ 14.0	▲ 0.5	19.8	1.8	22.8	▲ 7.7	69.3	▲ 7.9	▲ 11.8	57.2	▲ 2.9	▲ 57.3	▲ 46.6	▲ 43.3
	1月	▲ 2.4	7.9	19.1	▲ 0.1	97.4	25.9	46.7	0.6	46.9	▲ 8.8	0.6	▲ 8.0	▲ 16.7	▲ 21.1	12.0	▲ 49.6	▲ 25.8	▲ 15.5	▲ 50.6	2.2	57.2	▲ 22.2	119.8
	2	5.6	4.0	▲ 2.3	▲ 1.8	▲ 39.7	6.2	13.6	▲ 7.8	▲ 25.4	12.4	▲ 13.8	▲ 18.8	2.9	0.1	7.4	66.3	▲ 50.2	13.4	57.0	▲ 20.1	7.5	▲ 20.8	▲ 23.0
	3	▲ 1.5	▲ 0.9	▲ 10.6	▲ 6.4	13.9	▲ 1.0	▲ 22.6	▲ 29.7	36.1	▲ 13.5	13.8	13.4	▲ 7.5	▲ 0.4	▲ 14.1	▲ 28.6	101.9	▲ 17.4	▲ 6.3	▲ 18.6	▲ 42.9	▲ 3.1	▲ 14.7
	4	3.4	▲ 1.8	-	-	-	-	-	-	-	-	-	-	31.6	8.6	7.3	-	-	59.5	▲ 17.5	184.5	83.1	▲ 49.1	129.4
	5	2.5	14.7	-	-	-	-	-	-	-	-	-	-	▲ 26.8	▲ 11.8	▲ 8.8	-	-	▲ 42.4	▲ 18.7	▲ 57.0	▲ 24.9	8.4	▲ 32.5
	6	▲ 7.1	▲ 10.0	-	-	-	-	-	-	-	-	-	-	7.3	▲ 4.1	▲ 4.3	-	-	26.7	33.6	42.5	▲ 4.0	92.7	▲ 44.9
	7	2.8	▲ 2.0	-	-	-	-	-	-	-	-	-	-	▲ 5.0	4.1	▲ 19.2	-	-	▲ 6.1	4.5	▲ 13.6	▲ 38.9	1.5	81.0
	8	0.1	2.6	-	-	-	-	-	-	-	-	-	-	3.2	9.4	51.0	-	-	▲ 2.5	▲ 24.2	▲ 1.7	32.4	6.0	▲ 25.8
	9	▲ 1.5	▲ 1.4	-	-	-	-	-	-	-	-	-	-	▲ 0.7	▲ 4.5	▲ 10.3	-	-	▲ 4.4	5.4	▲ 12.7	15.7	5.4	23.0
	10	6.9	6.3	-	-	-	-	-	-	-	-	-	-	0.7	2.0	▲ 14.5	-	-	▲ 1.5	29.3	6.5	▲ 66.0	▲ 31.3	23.0
	11	▲ 0.8	7.2	-	-	-	-	-	-	-	-	-	-	▲ 12.1	▲ 7.8	9.9	-	-	▲ 11.4	▲ 24.8	▲ 2.2	109.8	22.1	▲ 16.5
	12	▲ 0.4	▲ 8.2	-	-	-	-	-	-	-	-	-	-	8.4	0.6	▲ 10.7	-	-	10.0	▲ 0.9	0.1	40.0	3.4	45.1
16年	1月	▲ 3.1	▲ 5.0	-	-	-	-	-	-	-	-	-	-	21.0	34.7	36.1	-	-	5.7	23.3	29.1	▲ 31.8	▲ 28.8	▲ 13.7
	2	▲ 4.5	▲ 1.7	-	-	-	-	-	-	-	-	-	-	▲ 20.9	▲ 25.4	▲ 19.2	-	-	▲ 12.6	▲ 9.7	▲ 23.2	9.0	▲ 21.3	▲ 2.2
	3	2.9	3.5	-	-	-	-	-	-	-	-	-	-	5.0	▲ 1.0	1.7	-	-	3.2	▲ 32.7	3.1	5.8	18.5	▲ 85.7
	4	7.0	16.4	-	-	-	-	-	-	-	-	-	-	▲ 19.5	▲ 43.8	▲ 34.1	-	-	12.9	40.6	16.8	8.3	▲ 7.9	691.5
	5	▲ 1.2	▲ 3.6	-	-	-	-	-	-	-	-	-	-	15.9	58.9	29.7	-	-	▲ 5.6	▲ 0.6	▲ 32.0	19.9	126.1	▲ 23.6
	6	7.2	9.0	-	-	-	-	-	-	-	-	-	-	▲ 6.1	▲ 17.0	▲ 40.9	-	-	▲ 3.7	10.8	30.1	▲ 16.1	▲ 35.3	40.0
	7	▲ 4.1	▲ 9.2	-	-	-	-	-	-	-	-	-	-	9.0	48.4	60.9	-	-	▲ 6.2	▲ 23.4	▲ 20.1	▲ 26.6	87.9	▲ 34.5
	8	▲ 1.3	1.5	-	-	-	-	-	-	-	-	-	-	▲ 9.5	▲ 5.9	▲ 11.3	-	-	▲ 14.9	▲ 28.5	▲ 10.5	53.3	▲ 78.3	53.4
	9	0.9	7.6	-	-	-	-	-	-	-	-	-	-	▲ 7.2	▲ 18.0	1.4	-	-	▲ 0.0	▲ 18.9	24.3	▲ 50.9	54.8	▲ 43.3
	10	▲ 0.2	▲ 5.4	-	-	-	-	-	-	-	-	-	-	17.7	33.1	38.0	-	-	7.8	45.0	▲ 9.4	16.5	42.6	18.9
	11	0.3	0.6	-	-	-	-	-	-	-	-	-	-	7.8	5.0	▲ 23.5	-	-	8.3	▲ 1.7	29.3	4.9	53.0	▲ 26.3
	12	▲ 3.7	▲ 1.8	-	-	-	-	-	-	-	-	-	-	▲ 20.5	▲ 31.8	36.1	-	-	▲ 9.4	6.3	▲ 12.7	8.2	▲ 55.4	▲ 9.8
17年	1月	10.4	8.4	-	-	-	-	-	-	-	-	-	-	10.7	1.4	▲ 33.1	-	-	15.3	11.7	▲ 6.2	162.1	26.9	207.2
	2	▲ 28.1	▲ 32.5	-	-	-	-	-	-	-	-	-	-	▲ 12.0	▲ 3.4	9.1	-	-	▲ 11.9	16.2	1.3	▲ 51.7	▲ 58.2	▲ 50.9
	3	53.9	34.0	-	-	-	-	-	-	-	-	-	-	13.0	127.0	187.3	-	-	13.0	▲ 6.9	20.9	▲ 25.2	169.8	108.1
	4	▲ 10.9	16.2	-	-	-	-	-	-	-	-	-	-	▲ 42.6	▲ 45.7	▲ 52.7	-	-	▲ 21.2	▲ 17.2	▲ 24.6	▲ 4.9	▲ 2.6	▲ 58.4
	5	▲ 7.3	▲ 16.1	-	-	-	-	-	-	-	-	-	-	12.8	23.4	14.6	-	-	22.6	13.8	21.7	9.1	▲ 93.6	15.6
	6	▲ 0.9	7.5	-	-	-	-	-	-	-	-	-	-	▲ 22.1	▲ 24.8	▲ 62.3	-	-	▲ 28.6	▲ 14.4	▲ 24.0	334.0	▲ 11.8	334.0
	7	27.8	3.0	-	-	-	-	-	-	-	-	-	-	43.5	33.2	100.5	-	-	65.5	9.2	30.9	66.2	247.1	327.0
	8	▲ 18.7	▲ 0.5	-	-	-	-	-	-	-	-	-	-	▲ 18.7	▲ 22.9	▲ 20.8	-	-	▲ 14.2	10.7	▲ 4.2	▲ 47.5	6.1	▲ 88.2
	9	1.0	▲ 1.3	-	-	-	-	-	-	-	-	-	-	17.0	21.7	81.3	-	-	9.7	▲ 5.6	6.4	49.9	▲ 39.2	80.0
	10	▲ 0.8	▲ 2.5	-	-																			

	3	7.6	2.3	-	-	-	-	-	-	-	-	-	-	-	-	16.4	46.0	4.7	-	-	▲ 16.9	82.6	▲ 11.9	▲ 62.0	0.8	▲ 8.1
	4	3.5	5.9	-	-	-	-	-	-	-	-	-	-	-	-	24.5	32.1	164.0	-	-	8.8	▲ 23.8	43.8	▲ 4.1	▲ 40.8	▲ 17.2
	5	▲ 5.5	▲ 5.1	-	-	-	-	-	-	-	-	-	-	-	-	▲ 42.2	▲ 50.4	▲ 70.2	-	-	▲ 20.2	▲ 35.3	▲ 11.5	1.6	▲ 4.5	▲ 9.7
	6	▲ 1.8	▲ 2.7	-	-	-	-	-	-	-	-	-	-	-	-	32.3	70.9	114.5	-	-	▲ 12.9	▲ 4.4	▲ 16.7	1.1	195.4	52.7
	7	2.5	▲ 0.6	-	-	-	-	-	-	-	-	-	-	-	-	▲ 21.7	▲ 47.5	▲ 47.0	-	-	24.5	10.8	▲ 4.2	47.3	▲ 44.9	53.2
	8	12.8	13.8	-	-	-	-	-	-	-	-	-	-	-	-	36.8	75.5	46.7	-	-	15.9	3.6	30.0	▲ 9.1	78.3	▲ 14.8
	9	▲ 0.5	▲ 13.6	-	-	-	-	-	-	-	-	-	-	-	-	0.1	2.4	13.5	-	-	▲ 5.6	25.0	▲ 21.6	27.7	▲ 41.9	270.0
	10	▲ 3.6	26.5	-	-	-	-	-	-	-	-	-	-	-	-	▲ 9.1	▲ 12.3	▲ 43.2	-	-	▲ 12.1	0.4	▲ 49.2	3.6	42.1	▲ 85.1
	11	▲ 4.5	▲ 11.0	-	-	-	-	-	-	-	-	-	-	-	-	12.0	7.6	64.1	-	-	27.4	16.0	98.1	4.0	▲ 81.0	32.5
	12	▲ 3.0	▲ 3.3	-	-	-	-	-	-	-	-	-	-	-	-	▲ 19.8	▲ 12.9	▲ 42.2	-	-	▲ 26.0	▲ 37.3	▲ 8.0	▲ 51.9	269.7	▲ 35.6
19年	1月	10.8	16.2	-	-	-	-	-	-	-	-	-	-	-	-	13.1	14.6	25.5	-	-	▲ 0.6	▲ 11.7	4.7	231.0	▲ 36.8	11.4
	2	▲ 10.0	▲ 16.0	-	-	-	-	-	-	-	-	-	-	-	-	16.9	27.6	▲ 5.2	-	-	▲ 9.6	▲ 12.6	32.0	▲ 76.5	107.8	6.8
	3	2.9	0.1	-	-	-	-	-	-	-	-	-	-	-	-	▲ 21.8	▲ 22.9	16.4	-	-	▲ 11.4	▲ 86.8	▲ 39.2	96.3	▲ 46.7	37.3
	4	4.6	8.8	-	-	-	-	-	-	-	-	-	-	-	-	22.9	48.5	15.8	-	-	▲ 22.3	737.2	▲ 24.0	▲ 47.1	21.5	▲ 22.7
	5	36.6	22.9	-	-	-	-	-	-	-	-	-	-	-	-	5.1	31.4	▲ 6.7	-	-	9.4	21.7	9.8	▲ 20.7	▲ 55.0	153.1
	6	▲ 15.6	2.4	-	-	-	-	-	-	-	-	-	-	-	-	▲ 17.9	▲ 42.3	13.5	-	-	26.1	▲ 14.4	28.0	359.8	▲ 17.1	▲ 51.9
	7	▲ 28.9	▲ 36.2	-	-	-	-	-	-	-	-	-	-	-	-	▲ 17.0	▲ 6.2	1.3	-	-	▲ 42.1	▲ 25.5	▲ 55.9	▲ 66.1	▲ 9.4	▲ 14.4
	8	11.5	9.8	-	-	-	-	-	-	-	-	-	-	-	-	12.3	▲ 10.2	▲ 13.3	-	-	99.9	327.2	3.3	▲ 36.0	22.1	25.9
	9	▲ 1.8	6.5	-	-	-	-	-	-	-	-	-	-	-	-	▲ 19.8	▲ 3.0	▲ 23.8	-	-	▲ 43.6	▲ 83.7	70.5	▲ 18.0	▲ 50.7	18.0
	10	▲ 13.3	▲ 9.0	-	-	-	-	-	-	-	-	-	-	-	-	▲ 12.9	▲ 19.7	▲ 26.7	-	-	▲ 7.2	▲ 83.2	2.6	30.0	▲ 73.1	▲ 38.7
	11	15.5	12.8	-	-	-	-	-	-	-	-	-	-	-	-	46.1	67.1	84.8	-	-	2.6	392.4	▲ 14.5	▲ 9.2	352.9	5.2
	12	9.0	▲ 3.6	-	-	-	-	-	-	-	-	-	-	-	-	20.9	30.6	18.7	-	-	43.5	▲ 23.3	34.6	81.1	77.0	47.0
20年	1月	3.4	3.9	-	-	-	-	-	-	-	-	-	-	-	-	21.2	3.1	12.1	-	-	18.2	559.5	▲ 0.3	▲ 47.3	82.9	▲ 5.7
	2	5.8	1.1	-	-	-	-	-	-	-	-	-	-	-	-	20.3	16.3	22.9	-	-	▲ 4.2	▲ 43.9	25.1	74.1	9.8	▲ 3.4
	3	▲ 4.4	▲ 2.4	-	-	-	-	-	-	-	-	-	-	-	-	▲ 43.9	▲ 41.4	▲ 48.7	-	-	▲ 40.7	▲ 102.6	▲ 40.4	▲ 19.2	▲ 68.5	85.9
	4	▲ 9.5	▲ 7.4	-	-	-	-	-	-	-	-	-	-	-	-	13.8	▲ 5.7	▲ 25.0	-	-	100.5	▲ 3603.0	10.8	64.6	899.5	▲ 40.9
	5	12.3	11.3	-	-	-	-	-	-	-	-	-	-	-	-	0.1	34.0	57.9	-	-	▲ 10.8	▲ 40.2	64.0	66.9	▲ 99.4	▲ 14.6
	6	▲ 4.4	▲ 5.1	-	-	-	-	-	-	-	-	-	-	-	-	33.6	17.4	▲ 11.9	-	-	17.5	409.5	▲ 19.5	▲ 38.3	2059.3	32.3
	7	18.2	20.4	-	-	-	-	-	-	-	-	-	-	-	-	18.8	30.3	160.5	-	-	▲ 12.0	▲ 67.5	3.9	▲ 41.5	125.9	▲ 25.1
	8	▲ 20.2	▲ 21.2	-	-	-	-	-	-	-	-	-	-	-	-	▲ 34.0	▲ 29.9	▲ 55.2	-	-	▲ 24.9	▲ 15.2	▲ 8.4	22.2	▲ 39.4	8.8
	9	5.4	10.1	-	-	-	-	-	-	-	-	-	-	-	-	▲ 33.6	▲ 45.0	▲ 14.9	-	-	▲ 4.7	▲ 8.5	▲ 23.6	19.6	▲ 36.7	168.3
	10	15.9	▲ 7.3	-	-	-	-	-	-	-	-	-	-	-	-	207.2	294.0	148.0	-	-	52.2	24.2	59.7	89.4	▲ 35.8	▲ 32.5
	11	▲ 29.5	▲ 2.1	-	-	-	-	-	-	-	-	-	-	-	-	▲ 56.4	▲ 65.2	▲ 56.1	-	-	▲ 19.4	18.3	▲ 12.3	▲ 91.5	34.5	▲ 80.2
	12	▲ 15.2	▲ 25.3	-	-	-	-	-	-	-	-	-	-	-	-	25.0	▲ 0.1	10.1	-	-	77.6	18.0	27.3	1888.6	▲ 5.6	▲ 288.5
21年	1月	▲ 7.0	▲ 7.5	-	-	-	-	-	-	-	-	-	-	-	-	▲ 19.2	3.9	12.8	-	-	▲ 53.1	▲ 16.7	▲ 21.3	▲ 73.8	103.5	▲ 139.2
	2	24.6	21.3	-	-	-	-	-	-	-	-	-	-	-	-	20.1	11.1	17.0	-	-	9.7	▲ 26.9	▲ 24.5	▲ 18.7	264.9	110.0
	3	▲ 21.6	▲ 43.2	-	-	-	-	-	-	-	-	-	-	-	-	14.7	9.6	▲ 3.1	-	-	54.4	154.7	98.0	111.3	▲ 67.3	▲ 210.3
	4	12.0	54.7	-	-	-	-	-	-	-	-	-	-	-	-	▲ 15.7	▲ 8.4	▲ 16.7	-	-	▲ 26.9	▲ 40.2	▲ 43.9	▲ 17.0	▲ 21.5	▲ 168.5
	5	▲ 12.5	▲ 19.1	-	-	-	-	-	-	-	-	-	-	-	-	▲ 11.5	14.9	10.0	-	-	▲ 6.1	▲ 12.1	15.2	▲ 44.7	▲ 66.8	▲ 14.3
	6	18.6	19.4	-	-	-	-	-	-	-	-	-	-	-	-	2.7	▲ 15.6	▲ 10.9	-	-	▲ 5.6	▲ 28.5	26.4	24.4	165.2	262.5
	7	▲ 7.4	▲ 5.3	-	-	-	-	-	-	-	-	-	-	-	-	23.9	▲ 5.8	▲ 0.2	-	-	76.6	106.1	11.7	33.7	▲ 25.6	▲ 64.9
	8	5.1	8.3	-	-	-	-	-	-	-	-	-	-	-	-	▲ 28.0	▲ 11.0	16.2	-	-	▲ 38.6	▲ 39.5	▲ 23.9	▲ 15.1	51.2	51.6
	9	25.5	36.6	-	-	-	-	-	-	-	-	-	-	-	-	19.9	33.3	▲ 1.6	-	-	13.3	74.3	▲ 4.8	16.4	▲ 29.2	▲ 60.8
	10	▲ 21.4	▲ 29.5	-	-	-	-	-	-	-	-	-	-	-	-	26.3	12.0	5.1	-	-	7.6	▲ 17.9	37.1	▲ 5.4	27.8	58.2
	11	▲ 0.0	2.5	-	-	-	-	-	-	-	-	-	-	-	-	▲ 12.8	▲ 17.8	▲ 50.5	-	-	9.7	▲ 35.6	▲ 7.3	▲ 8.5	▲ 49.3	42.4
	12	▲ 2.6	▲ 2.2	-	-	-	-	-	-	-	-	-	-	-	-	▲ 26.3	▲ 26.0	19.3	-	-	▲ 17.1	13.4	▲ 23.4	▲ 23.9	318.5	▲ 18.2
22年	1月	10.0	8.8	-	-	-	-	-	-	-	-	-	-	-	-	22.4	21.9	▲ 28.5	-	-	15.5	37.5	74.1	36.1	▲ 64.8	36.3
	2	▲ 15.9	▲ 13.8	-	-	-	-	-	-	-	-	-	-	-	-	▲ 6.2	▲ 10.3	61.5	-	-	▲ 12.5	▲ 22.7	▲ 24.3	▲ 1.4	42.6	▲ 87.0
	3	41.6	26.0	-	-	-	-	-	-	-	-	-	-	-	-	16.0	15.9	9.5	-	-	21.4	27.3	15.6	1.3	1352.3	1352.3
	4	▲ 40.5	▲ 38.3	-	-	-	-	-	-	-	-	-	-	-	-	▲ 25.7	▲ 33.6	▲ 32.1	-	-	▲ 13.5	▲ 19.0	17.6	9.0	▲ 56.4	▲ 59.8
	5	23.7	28.2	-	-	-	-	-	-	-	-	-	-	-	-	▲ 7.6	▲ 13.8	▲ 10.8	-	-	16.4	62.1	▲ 42.6	▲ 43.3	27.1	27.6
	6	0.3	6.6	-	-	-	-	-	-	-	-	-	-	-	-	18.9	28.0	31.0	-	-	▲ 10.4	▲ 30.5	16.3	36.6	235.0	▲ 34.7
	7	3.8	2.1	-	-	-	-	-	-	-	-	-	-	-	-	▲ 11.8	▲ 0.7	▲ 1.8	-	-	▲ 19.8	▲ 28.8	▲ 28.7	42.1	▲ 77.1	82.7
	8	0.2	2.3	-	-	-	-	-	-	-	-	-	-	-	-	14.3	18.4	6.4	-	-	11.4	▲ 1.4	0.6	69.2	▲ 52.4	▲ 57.8
	9	11.4	8.1	-	-	-	-	-	-	-	-	-	-	-	-	8.7	17.2	33.6	-	-	23.1	▲ 14.7	156.9	▲ 70.3	393.1	98.8
	10	▲ 14.2	▲ 5.7	-	-	-	-	-	-	-	-	-	-	-	-	▲ 27.2	▲ 26.1	▲ 43.8	-	-	▲ 53.6	26.7	▲ 72.7	▲ 25.6	▲ 42.5	▲ 15.3
	11	1.6	▲ 7.6	-	-	-	-	-	-	-	-	-	-	-	-	72.9	24.4	85.8	-	-	230.3	134.4	101.2	153.7	235.3	▲ 77.9
	12	14.3	8.6	-	-	-	-	-	-	-	-	-	-	-	-	▲ 16.3	19.6	▲ 18.8	-	-	▲ 47.3	▲ 46.1	▲ 15.8	▲ 53.8	▲ 68.5	572.2
23年	1月	▲ 13.5	▲ 10.6	-	-	-	-	-	-	-	-	-	-	-	-	▲ 14.8	▲ 33.7	▲ 23.8	-	-	27.7	▲ 5.4	▲ 25.5	64.3	517.5	▲ 33.7
	2	14.6	21.1	-	-	-	-	-	-	-	-	-	-	-	-	4.8	11.2	8.9	-	-	▲ 15.5	13.5	51.4	45.0	▲ 92.9	33.9
	3	5.4	2.7	-	-	-	-	-	-	-	-	-	-	-	-	▲ 10.7	▲ 16.2	▲ 17.3	-	-	▲ 0.0	▲ 56.4	16.9	▲ 35.8	212.7	▲ 56.4
	4	▲ 10.2	▲ 15.5	-	-	-	-	-	-	-	-	-	-	-	-	27.8	26.7	48.9	-	-	28.8	110.1	59.9	80.1	11.7	159.9
	5	9.7	8.3	-	-	-	-	-	-	-	-	-	-	-	-	▲ 0.6	97.2	▲ 27.2	-	-	▲ 42.5	▲ 28.1	▲ 49.6	3.1	▲ 81.7	15.0

6	▲ 9.9	2.9	-	-	-	-	-	-	-	-	-	-	▲ 19.8	▲ 55.5	17.5	-	-	23.7	▲ 6.0	▲ 16.9	▲ 2.3	547.1	▲ 46.5
7	1.7	1.6	-	-	-	-	-	-	-	-	-	-	1.1	1.6	0.1	-	-	3.0	34.5	23.0	▲ 32.2	▲ 34.8	▲ 10.6
8	1.2	▲ 4.4	-	-	-	-	-	-	-	-	-	-	14.2	▲ 31.4	▲ 19.7	-	-	83.3	185.5	31.9	▲ 28.9	195.7	73.0
9	▲ 2.3	▲ 8.1	-	-	-	-	-	-	-	-	-	-	28.3	27.2	18.4	-	-	49.0	263.9	▲ 10.2	21.8	▲ 84.4	▲ 123.6
10	13.4	8.4	-	-	-	-	-	-	-	-	-	-	24.2	28.0	40.3	-	-	▲ 16.8	▲ 39.5	▲ 25.5	40.1	179.1	▲ 323.6
11	1.3	4.4	-	-	-	-	-	-	-	-	-	-	▲ 28.0	15.1	3.0	-	-	▲ 45.0	▲ 90.4	▲ 49.8	68.7	220.4	169.6
12	▲ 3.6	3.0	-	-	-	-	-	-	-	-	-	-	▲ 6.6	▲ 18.7	▲ 14.7	-	-	22.5	340.5	84.2	▲ 3.2	▲ 77.4	▲ 43.0
24年 1月	4.9	0.5	-	-	-	-	-	-	-	-	-	-	20.5	59.6	57.7	-	-	▲ 31.1	▲ 52.3	▲ 19.4	▲ 13.1	▲ 19.8	7.0
2	▲ 12.2	▲ 10.0	-	-	-	-	-	-	-	-	-	-	▲ 12.7	▲ 26.7	▲ 31.8	-	-	17.2	31.4	38.5	▲ 7.8	▲ 38.4	▲ 5.3
3	12.8	8.6	-	-	-	-	-	-	-	-	-	-	5.3	10.5	21.0	-	-	▲ 0.7	▲ 11.5	6.6	4.7	▲ 4.2	▲ 19.0
4	▲ 0.0	2.7	-	-	-	-	-	-	-	-	-	-	6.6	4.8	▲ 18.0	-	-	1.0	28.2	11.4	▲ 48.6	▲ 16.9	19.8
5	▲ 10.6	▲ 9.2	-	-	-	-	-	-	-	-	-	-	▲ 6.9	▲ 4.7	19.8	-	-	50.3	54.9	17.7	91.3	275.7	▲ 40.6
6	2.5	4.9	-	-	-	-	-	-	-	-	-	-	3.5	▲ 3.9	▲ 38.7	-	-	▲ 15.8	▲ 16.5	▲ 1.4	▲ 5.7	▲ 81.8	▲ 10.4
7	1.2	▲ 3.0	-	-	-	-	-	-	-	-	-	-	11.9	28.8	157.3	-	-	▲ 11.0	▲ 48.9	▲ 26.5	▲ 21.3	1952.4	▲ 40.0
8	1.2	1.5	-	-	-	-	-	-	-	-	-	-	▲ 2.6	▲ 7.2	▲ 19.7	-	-	2.6	12.8	18.4	30.3	▲ 22.8	134.1
9	▲ 0.8	▲ 6.6	-	-	-	-	-	-	-	-	-	-	▲ 21.2	▲ 8.2	▲ 30.4	-	-	▲ 15.7	▲ 30.4	4.6	▲ 3.3	21.8	124.0
10	▲ 11.7	▲ 5.2	-	-	-	-	-	-	-	-	-	-	▲ 9.9	▲ 8.5	6.4	-	-	▲ 48.3	▲ 191.4	3.7	▲ 30.8	▲ 31.5	▲ 53.9
11	18.5	17.9	-	-	-	-	-	-	-	-	-	-	19.3	▲ 28.0	▲ 28.5	-	-	171.7	▲ 227.3	21.0	28.4	▲ 41.9	▲ 11.8
12	4.7	5.1	-	-	-	-	-	-	-	-	-	-	16.6	67.3	12.3	-	-	▲ 19.2	▲ 29.9	▲ 32.3	▲ 30.5	272.9	6.8
25年 1月	▲ 5.4	▲ 5.4	-	-	-	-	-	-	-	-	-	-	▲ 1.7	▲ 19.5	27.8	-	-	47.1	66.9	83.3	79.2	▲ 37.0	▲ 21.4
2	8.0	15.4	-	-	-	-	-	-	-	-	-	-	▲ 0.9	6.7	▲ 9.4	-	-	▲ 23.6	▲ 6.3	8.8	16.0	▲ 71.1	106.0
3	▲ 6.1	▲ 14.2	-	-	-	-	-	-	-	-	-	-	▲ 6.8	▲ 5.0	▲ 7.7	-	-	▲ 13.9	8.4	▲ 26.9	▲ 37.5	▲ 75.7	28.8
4	4.2	4.8	-	-	-	-	-	-	-	-	-	-	16.4	32.8	20.5	-	-	▲ 27.0	12.7	▲ 41.0	▲ 1.8	164.3	▲ 40.8
5	6.5	11.2	-	-	-	-	-	-	-	-	-	-	3.9	73.5	12.3	-	-	38.7	▲ 22.5	66.4	37.9	142.9	▲ 8.5
6	2.2	▲ 5.6	-	-	-	-	-	-	-	-	-	-	▲ 7.7	▲ 34.5	48.3	-	-	▲ 3.6	▲ 36.5	12.9	▲ 68.1	▲ 24.1	160.2
7	▲ 7.0	▲ 13.0	-	-	-	-	-	-	-	-	-	-	2.1	▲ 19.9	▲ 27.4	-	-	25.9	67.7	10.2	223.7	▲ 25.1	0.6
8	10.0	29.1	-	-	-	-	-	-	-	-	-	-	16.8	19.1	56.3	-	-	12.8	36.0	33.3	▲ 12.3	▲ 66.4	▲ 64.8
9	59.9	68.4	-	-	-	-	-	-	-	-	-	-	3.1	3.3	▲ 37.3	-	-	24.8	15.1	54.4	37.6	77.3	15.7
10	▲ 28.4	▲ 34.0	-	-	-	-	-	-	-	-	-	-	▲ 10.1	▲ 7.0	2.9	-	-	▲ 42.0	▲ 19.7	▲ 65.4	▲ 10.1	▲ 2.6	18.2
11	▲ 21.7	▲ 36.4	-	-	-	-	-	-	-	-	-	-	3.2	▲ 3.7	▲ 3.4	-	-	16.7	▲ 37.4	26.2	▲ 29.9	▲ 36.8	67.0
12	4.5	16.1	-	-	-	-	-	-	-	-	-	-	13.3	▲ 5.4	9.7	-	-	46.5	93.2	99.1	44.1	20.8	▲ 57.4
26年 1月	4.3	5.2	-	-	-	-	-	-	-	-	-	-	▲ 13.5	8.0	▲ 4.1	-	-	▲ 30.3	▲ 1.6	▲ 47.7	▲ 47.3	▲ 55.8	128.6
2	3.8	▲ 10.2	-	-	-	-	-	-	-	-	-	-	18.5	1.8	2.7	-	-	45.1	200.1	▲ 23.1	42.0	218.3	137.2
3	▲ 20.9	▲ 21.3	-	-	-	-	-	-	-	-	-	-	▲ 3.2	▲ 0.3	▲ 2.6	-	-	▲ 12.7	▲ 10.9	▲ 0.2	34.2	▲ 5.1	▲ 78.9
4	129.3	84.4	-	-	-	-	-	-	-	-	-	-	316.9	444.5	39.3	-	-	25.6	▲ 41.0	46.9	0.5	150.7	15.3
5	▲ 41.1	▲ 20.5	-	-	-	-	-	-	-	-	-	-	▲ 69.7	▲ 56.1	45.3	-	-	▲ 6.7	▲ 14.8	49.9	▲ 8.0	▲ 14.6	76.3
6	▲ 4.3	▲ 0.6	-	-	-	-	-	-	-	-	-	-	▲ 3.4	▲ 32.2	▲ 42.1	-	-	▲ 5.3	37.1	▲ 36.9	▲ 5.1	▲ 27.9	▲ 50.3
7	7.5	6.1	-	-	-	-	-	-	-	-	-	-	▲ 3.7	▲ 15.2	0.5	-	-	3.7	▲ 1.4	17.9	▲ 53.3	20.2	124.1
8	▲ 4.2	▲ 11.1	-	-	-	-	-	-	-	-	-	-	▲ 9.6	▲ 8.5	▲ 5.5	-	-	▲ 16.2	▲ 12.5	▲ 39.4	260.2	2.4	99.7
9	▲ 9.0	10.0	-	-	-	-	-	-	-	-	-	-	▲ 37.3	▲ 37.8	10.8	-	-	▲ 25.5	▲ 45.0	▲ 8.4	17.0	▲ 11.2	▲ 70.4
10	34.3	14.1	-	-	-	-	-	-	-	-	-	-	79.9	42.3	▲ 3.0	-	-	81.0	155.1	120.0	▲ 64.7	▲ 46.2	134.5
11	▲ 17.7	▲ 9.8	-	-	-	-	-	-	-	-	-	-	▲ 8.2	▲ 8.0	14.4	-	-	▲ 6.5	▲ 19.3	▲ 28.3	▲ 23.6	39.8	▲ 86.0
12	▲ 4.6	▲ 8.0	-	-	-	-	-	-	-	-	-	-	▲ 12.5	▲ 2.2	16.5	-	-	▲ 27.1	▲ 16.1	▲ 11.3	64.6	25.1	503.2
27年 1月	23.2	45.2	-	-	-	-	-	-	-	-	-	-	17.9	20.7	▲ 20.3	-	-	42.8	▲ 10.3	46.8	▲ 42.3	89.0	▲ 77.1
2	▲ 19.4	▲ 7.8	-	-	-	-	-	-	-	-	-	-	▲ 30.1	▲ 29.5	▲ 23.0	-	-	▲ 43.3	▲ 12.6	▲ 19.7	52.1	▲ 83.7	4.3
3	▲ 14.5	▲ 29.8	-	-	-	-	-	-	-	-	-	-	14.9	▲ 3.5	▲ 28.6	-	-	37.8	▲ 77.3	47.4	120.8	▲ 61.9	▲ 304.2
4	85.9	81.7	-	-	-	-	-	-	-	-	-	-	70.7	88.2	152.7	-	-	49.6	350.7	24.1	25.3	724.6	▲ 191.1
5	▲ 37.6	▲ 32.6	-	-	-	-	-	-	-	-	-	-	▲ 41.6	30.3	15.0	-	-	▲ 53.8	▲ 22.1	▲ 42.4	▲ 57.9	▲ 99.4	▲ 33.0
6	17.4	7.2	-	-	-	-	-	-	-	-	-	-	20.2	▲ 11.6	▲ 13.9	-	-	4.6	▲ 20.6	▲ 44.6	▲ 43.5	46813.5	165.3
7	▲ 10.5	▲ 2.1	-	-	-	-	-	-	-	-	-	-	▲ 8.9	▲ 20.0	▲ 53.4	-	-	▲ 0.4	15.5	27.5	48.5	▲ 82.5	▲ 90.2
8	▲ 16.0	▲ 14.6	-	-	-	-	-	-	-	-	-	-	▲ 20.0	▲ 26.4	▲ 26.3	-	-	▲ 17.9	▲ 46.2	▲ 22.8	73.0	▲ 6.7	498.2
9	18.8	18.8	-	-	-	-	-	-	-	-	-	-	▲ 13.2	▲ 21.9	93.4	-	-	25.3	47.2	107.4	▲ 59.1	▲ 72.3	72.3
10	▲ 8.1	▲ 22.4	-	-	-	-	-	-	-	-	-	-	44.6	23.3	▲ 25.7	-	-	38.7	205.4	▲ 41.6	▲ 15.8	▲ 55.5	93.8
11	15.7	4.2	-	-	-	-	-	-	-	-	-	-	19.5	36.5	29.2	-	-	▲ 10.6	▲ 76.2	30.0	178.5	399.0	232.7

注) ・民間の発注者分類ごとの数値
・国機関のうち、公団・事業団、政府関連企業 の数値

上記のものにつきましては、2003年4月から発注者分類の変更があったため、
季節調整値を算出しておりません。
よって、季節調整替えもできないため、
値はありません。