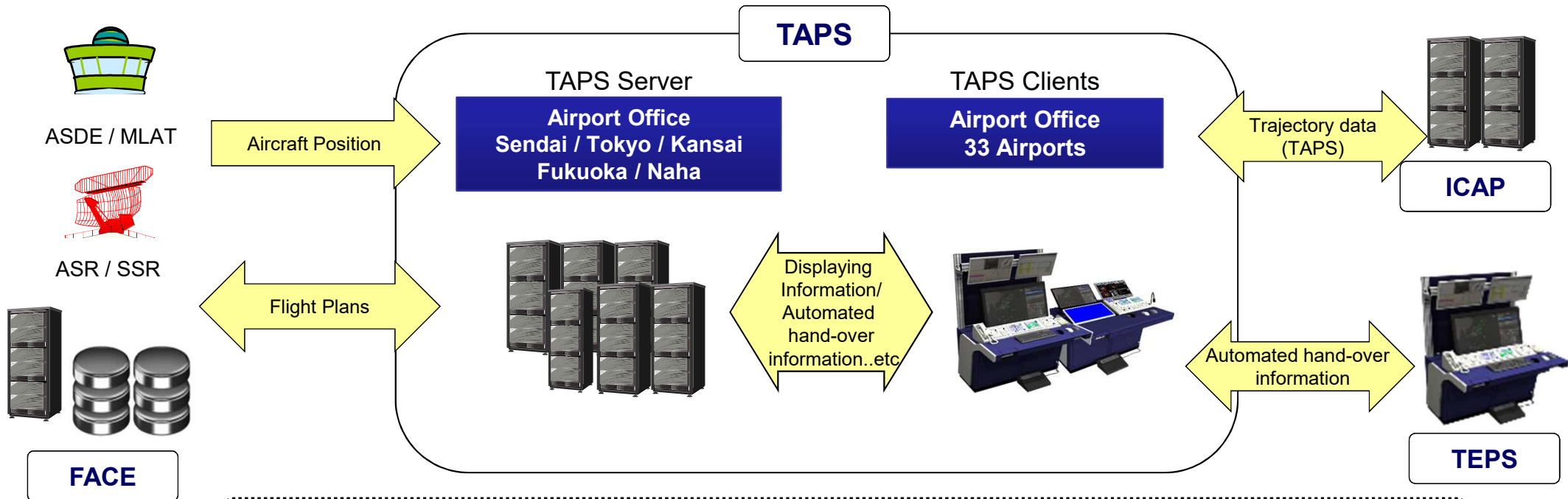


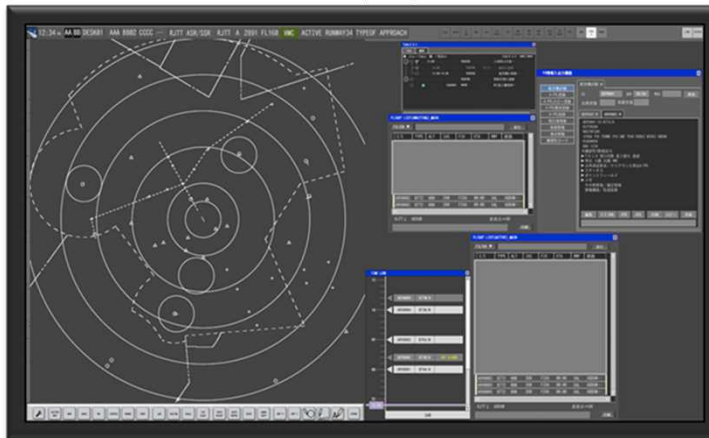
Overview of Trajectorized Airport Traffic Data Processing System(TAPS)

TAPS (Trajectorized Airport Traffic Data Processing System)

TAPS processes information on aircraft operating at airport (flight number, altitude, type of aircraft, predicted location, etc.) by comparing aircraft position information from radars and flight plan information from FACE.



Display



Target Data Block

CAB001	— Aircraft Identification
063↑180	— Current Altitude / Vertical Direction Indicator / Aiming Altitude
23H	— Ground Speed / Wake Turbulence Category / Destination Airport
RJCC	— Radar Position Symbol/Reference for Separation