



Towards the Inclusive Smart Society

Tsukuba Super Science City Initiative

Kenji Suzuki

Executive Office and Dean, University of Tsukuba

Advisor, City of Tsukuba

Architect, Tsukuba Super City Initiative

Tsukuba Super Science Initiative

New choice with science for well-beings



*Exploring
Tomorrow.*
TSUKUBA



Mobility
(Mobility & deliveries)



Voting & Public
(Digital Governance)



Healthcare
(Medicine & Welfare)



Resilience
(Infra & disaster response)



Digital Twin
(Smart planning)

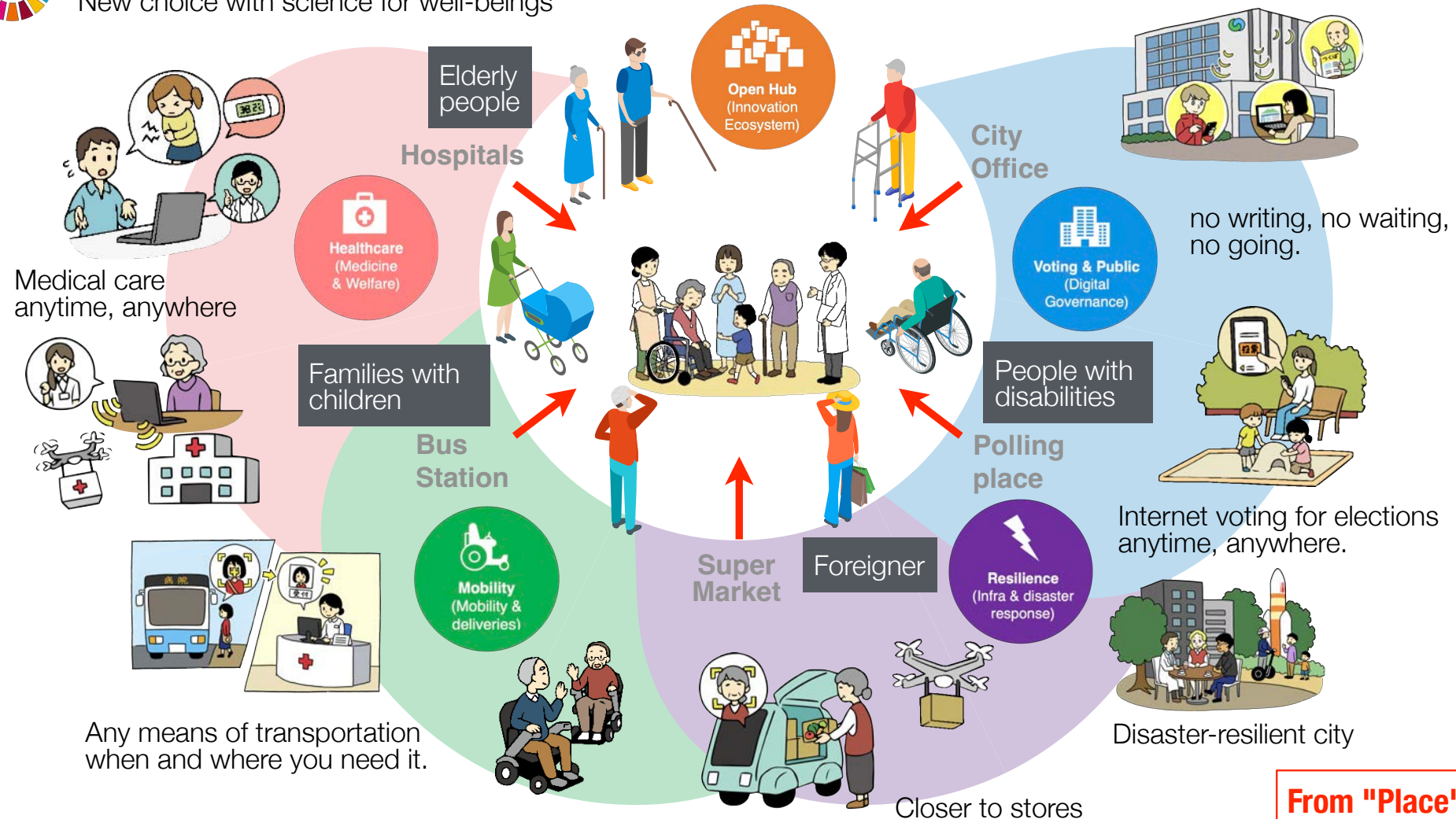


Open Hub
(Innovation Ecosystem)



Tsukuba Super Science Initiative

New choice with science for well-beings



From "Place" to "People"
Inclusive Technology



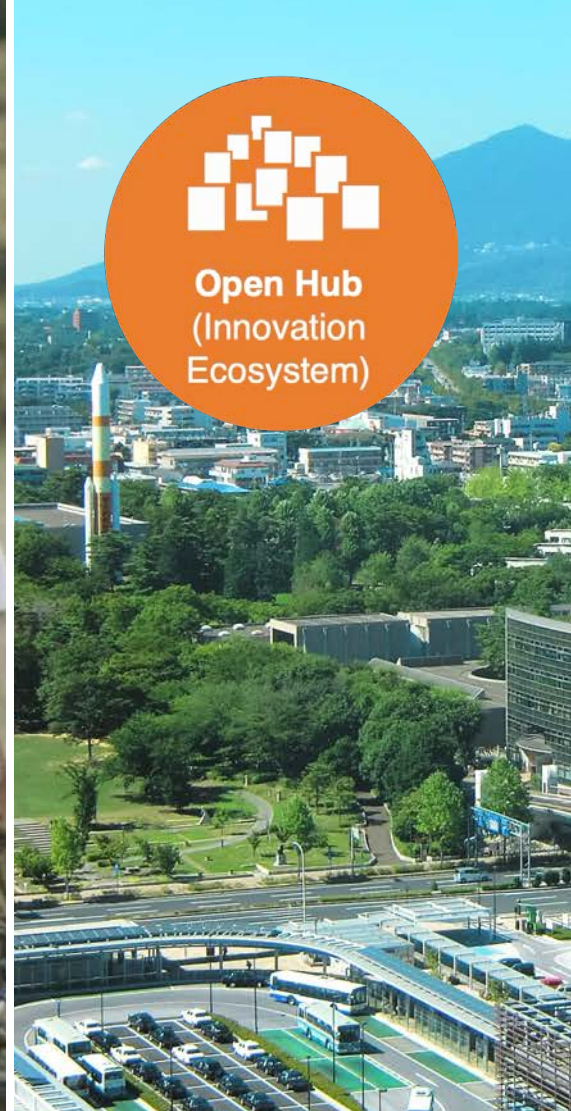
 CYBERDYNE



 PLIMES



 Qolo



Open Hub
(Innovation
Ecosystem)

 Super
City





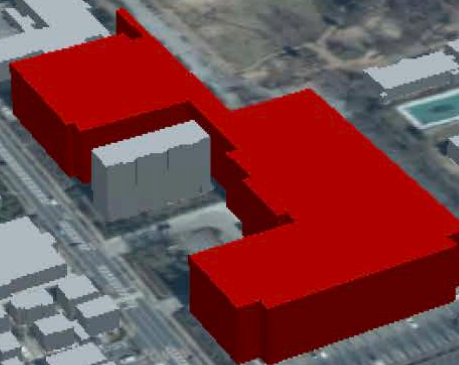
Digital Twin
(Smart planning)



Address *2-20-3 Takezono, Tsukuba*
Building ID *08220-bldg-99018*
Classification *Normal building*
Use *Educational and welfare facilities*
Height *21.2 [m]*
Number of floors *4*

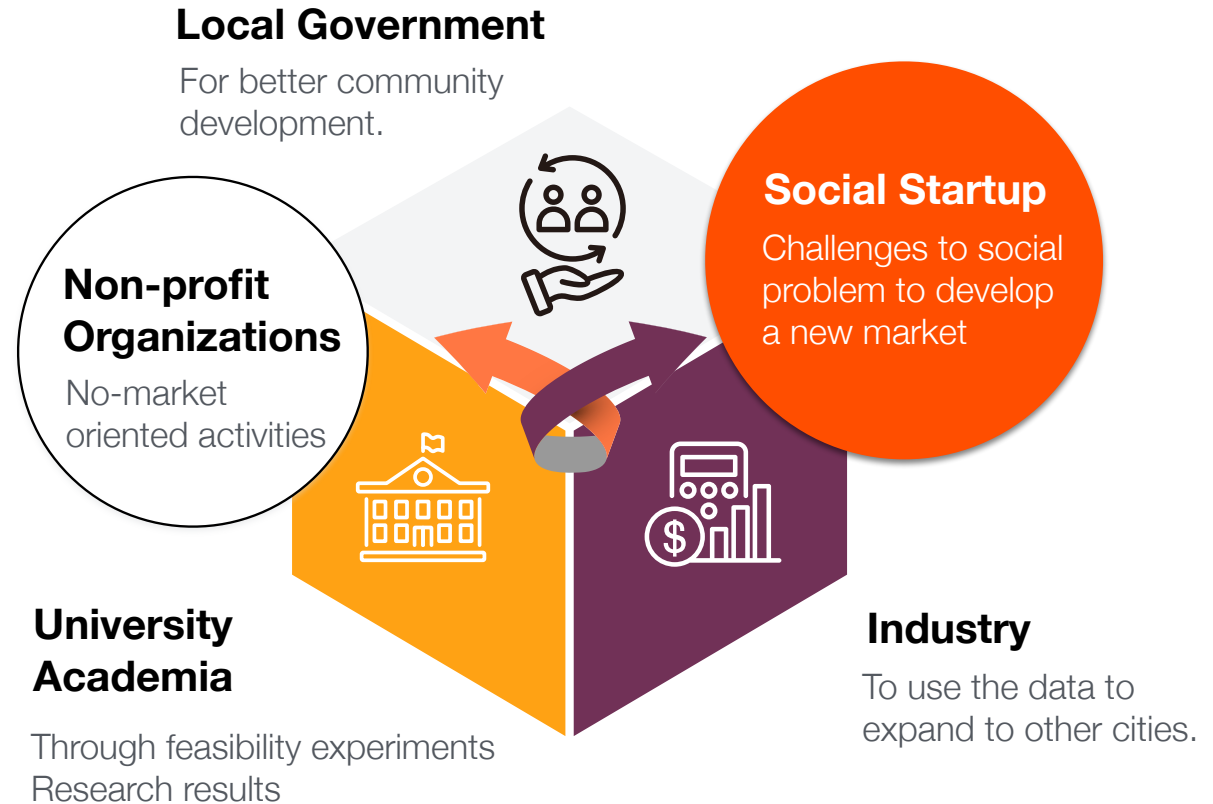


Digital Twin
(Smart planning)



New Ecosystem is Needed

- A social startup is an entrepreneurial venture that has just been established and is market-oriented.
- They develop and implement solutions to social, cultural, or environmental issues.
- For-profit entrepreneurs typically measure performance using business metrics like profit, revenues and increases in stock prices.
- A new ecosystem that connects local governments and markets will become necessary.



A business model development with the public sector