

# 3-16. PBR(Passenger Boarding Roof)



Category	Area	Aircraft Docking and Passenger Boarding Bridges
	Theme	Improving passenger convenience, Security and Safety

## Product Summary

### Passage with an extendable roof

- Extendable part specification (one unit)
  - WGT: About 150 kg; H: 2,600 mm; W: 1,750 mm;
  - L: 1,250 mm -> 250 mm
  - Unit connection allows response to length in accordance with the operating environment.
- Tip part specification
  - WGT: About 300 kg; H: 2,600 mm; W: 1,750 mm
  - It is possible to respond to changes in size, a boarding gate, or the like in accordance with the operating environment.

## Features

- Passenger routes can be established between the terminal and the aircraft even where there is no PBB.
- Can be extended, retracted, and moved by an electric towing vehicle or other means.
- The telescopic mechanism reduces the length to 1/5 of the maximum length when retracted.
- Several colors can be selected for the sealing and sides.

## Applications

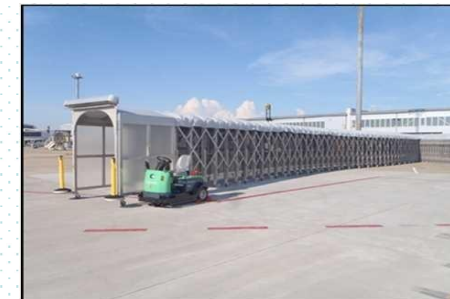
- Aprons
- Ship CIQ facilities
- Event venues.

## Past Installations

- Japanese Airports:
  - Chubu (LCC terminal) OCT 2019, Matsumoto MAR 2024
- Japanese Ports:
  - Shizuoka Shimizu MAR 2021, Kyoto Maizuru JUL 2021
  - Ehime Matsuyama MAR 2024



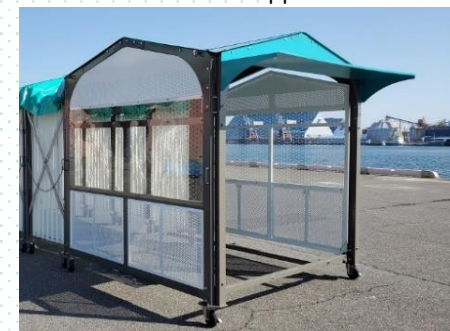
Inside PBR passage



PBR external appearance



Roof and side designs can be changed



Tip part

## Contact Information

AGP CORPORATION  
 TEL: +81 3 3747 1640;  
 E-mail: [h.koyama@agpgroup.co.jp](mailto:h.koyama@agpgroup.co.jp)  
[y.tsuji@agpgroup.co.jp](mailto:y.tsuji@agpgroup.co.jp)  
 URL: <https://www.agpgroup.co.jp>

