

3-18. Monitoring Service by Synthetic Aperture Radar (SAR) Satellite



Category	Area	Airfield Service Equipment
	Theme	Advanced and high quality of maintenance

Product Summary

- Change Detection Service
 - To detect changed areas by analyzing strength information of SAR images from two different periods.
- Time-series Interferometric Analysis Service
 - To detect very slight displacements of infrastructure or ground subsidence etc. by interferometric analysis of phase information of SAR images.

Features

- Analysis unit is 4-8 km square
- Accuracy of displacement measurement is within 3-4mm /year
- Real time data analysis (image acquisition frequency: approx. 1-2 images/month)
- Resolution of satellite images is currently 1-3 m

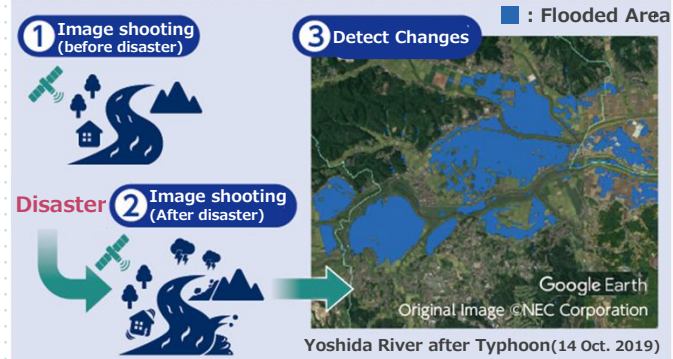
Applications

- Airport / Runways
- Shield construction area
- Port facilities (Tanks, pipelines, etc.)

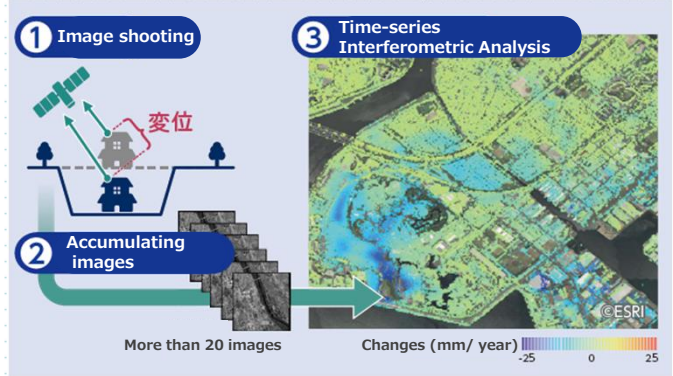
Past Installations

- Japan : Haneda Airport, Kansai Airport, Nanki-Shirahama Airport (PoC project) Shield construction area (In operation)
- Overseas : None

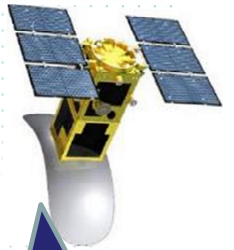
Change Detection Analysis Service



Time-series Interferometric Analysis Service



ASNARO-2
(SAR satellite owned / operated by NEC)



NEC supports Satellite Operation, Sales and Analysis of images from ASNARO-2

Contact Information

Ae Uchikura
 Land, Infrastructure, Transport and Tourism
 Solution Department, NEC Corporation
 TEL: +81-3-3798-6683
 E-mail: uchikura_ae@nec.com
 URL: <https://www.nec.com>