

## 3-19. Road Pavement Damage Diagnosing System



Category	Area	Airfield Service Equipment
	Theme	Advanced and high quality of maintenance

### Product Summary

- By analyzing the video image of road surfaces taken from running cars, damage to roads, such as cracks and rutted roads, is checked.

### Features

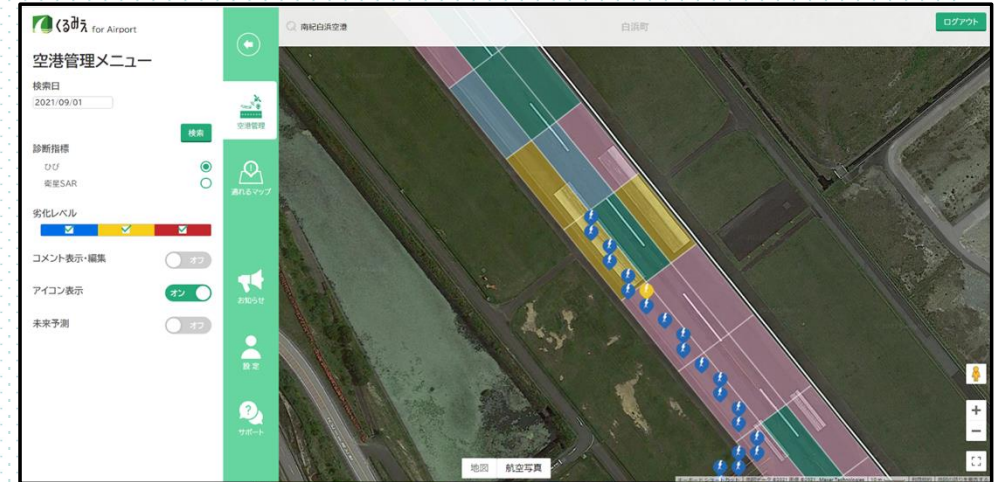
- Inspection is possible at a low cost and over a short period of time.
- It is possible for the central government and local governments to make maintenance plans for higher-priority roads and efficiently conduct inspection activities.

### Applications

- Roads

### Past Installations

- Japan : Nanki-Shirahama Airport
- Overseas : None
- \*Individual consultations for overseas projects



### Contact Information

Ae Uchikura  
 Land, Infrastructure, Transport and Tourism  
 Solution Department, NEC Corporation  
 TEL: +81-3-3798-6683  
 E-mail: [uchikura\\_ae@nec.com](mailto:uchikura_ae@nec.com)  
 URL: <https://www.nec.com>