



## ~ Think Together about the Capital Functions Relocation of Japan ~

### Trends in the Diet

#### House of Representatives

Mr. Eiji Nagai was newly assigned as the Chairman of the Special Committee for the Relocation of the Diet and Other Organizations of the House of Representatives at the committee meeting on January 31.

#### House of councilors

Mr. Giichi Tsunoda was once again assigned as the Chairman of the Special Committee for the Relocation of the Diet and Other Organizations of the House of Councilors at the committee meeting on January 31.

### Proposals of the Panels Related to the Capital Functions Relocation

The Ministry of Land, Infrastructure and Transport (MLIT) has continued its study on the capital functions relocation from three points of view, "Information Technology," "Environment" and "How the New City Should Be," establishing one panel for each subject. Summaries of the proposals and reports of these three panels are introduced here.

For details of each proposal, please refer to the Capital Functions Relocation Homepage of MLIT.  
(Until May: <http://www.nla.go.jp/daishu/info-f.html>)

#### Proposal (Final Proposal) Concerning How the Capital Function City Should Utilize Information Technology (IT)

After the "Panel for Studying How the Capital Function City Should Utilize IT" (chaired by Dean Hideo Aiso of the Tokyo University of Technology) concluded and published an interim proposal (introduced in the December 2000 issue of this newsletter), many opinions were offered to the Panel. The Panel then concluded its final proposal in March 2001 reflecting these opinions. A summary of the important issues raised at the Panel, and new material added to the report, are introduced here.

##### [Summary of the Important Issues Raised by the Panel]

As the Panel expects that discussions about the interrelationship between advanced Information Technology (IT) networking and the capital functions relocation will be extended and deepened, important matters to be noticed and recognized by the Panel based on their discussions on important issues are raised here so as to be of some help for encouraging these discussions.

The first point that we should note these matters in the time-frame.

- (1) As IT networking progresses, measures against possible impediments such as cybernet terrorism will acquire greater importance for the capital functions. Emergency measures peculiar to the advanced information network era are to be implemented in relation to the future capital functions relocation but implemented rapidly even before the relocation takes place.
- (2) Japan is now planning to rapidly promote measures for formulating an advanced information communication network society, and both social and industrial activities will be transformed within the next several years. The significance and effects of the capital functions relocation should be discussed in view of changes taking place at the present time, and considering the future aspects of the advanced information communication network society to be established in Japan.

- (3) In establishing the information infrastructure of the capital function city, as much elasticity as possible should be maintained in preparation for the future, always considering the introduction of the latest technology.

The second point to be advanced is that the meaning of 'real space' in the advanced information network era should be discussed further.

- (1) Even when imaging the capital function city's supposed future IT networking, what should not be presented is a city image in which the information space is overemphasized but an image that gives a vivid impression.
- (2) It is necessary to conceive the capital function city as a real space to convey its identity to the nation.

The third point is to further clarify the fundamental idea of the capital functions relocation through discussions.

- (1) The capital functions relocation should not be considered a temporary economic measure or a simple public work, but should be discussed as a creative project to carry out a paradigmatic shift towards breaking away from catch-up intention.
- (2) The capital functions relocation should be discussed not from the viewpoint of a choice between two things, either focusing on large cities or country, but from the viewpoint of initiating a qualitative improvement of the national land as a whole.

## Proposals by the Panel for Environment of the Capital Functions Relocation

The "Panel for Environment of the Capital Functions Relocation" (chaired by Professor Emeritus Hisato Ide of the University of Tokyo), consisting of experts in the areas of environment and urban planning, studied issues necessary for properly considering environmental factors in planning the new city, the relocation destination, in cooperation with the Ministry of Environment, and submitted a proposal.

### [Summary of the Proposal]

#### 1. How the New City Should be Environment-Friendly

The ideal situation sought for the environment-friendly new city should be a "circulating and continuously developable city which compatible with nature where the environmental load is minimized," i.e. the combination of a "nature-friendly city" and a "zero-emission city." The purpose of the new city is not only to consider the effects on the environment but also to realize a city that endeavors to create a better environment.

##### (1) "Nature-Friendly City"

A city that seeks to promote society living together in harmony with the surrounding creatures to create lifestyles stemming from the natural features of the region.

##### (2) "Zero-Emission City"

A city that seeks to nullify the environmental load in two ways, minimizing the environmental load caused by the new city activities and contributing to the reduction of the environmental load in other regions.

#### 2. How the New City Planning Technique Considering the Environment Should Relocate the Capital Functions?

It is necessary to study the plans to properly consider the environment when preparing a preliminary plan, such as planning by applying "Strategic Environmental Assessment," one of the plans to include environmental consideration, rather than carrying out environmental assessment procedures based on the Environmental Assessment Law.

##### (1) Fundamental Policy (tentative name) Stage of the New City

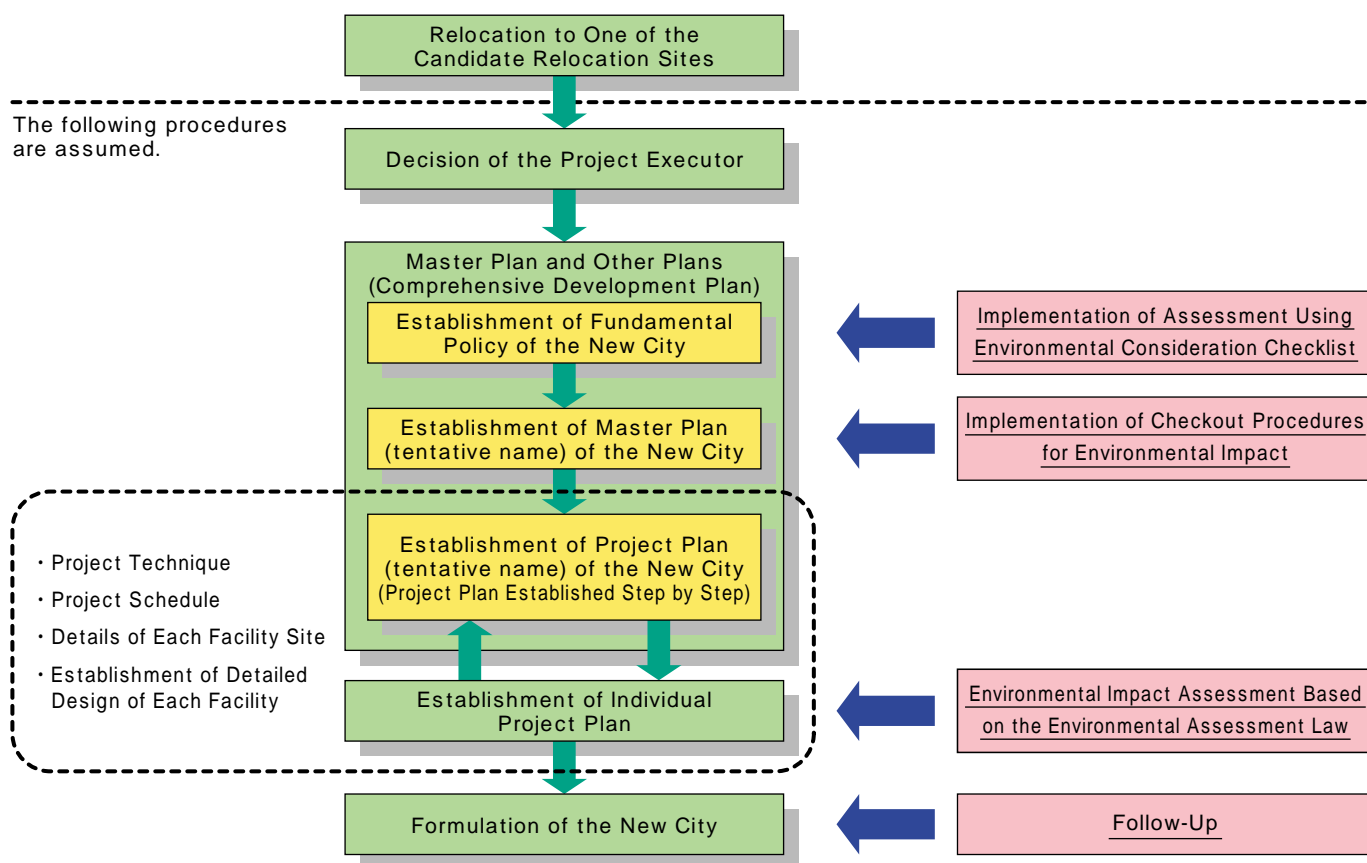
Proper assessment is chiefly carried out by referring to the environmental consideration checklist.

##### (2) Master Plan Stage of the New City

Environmental impact checking procedures, which involve the use of more than one plan, operate mainly on the outlines of land utilization and function distribution.

##### (3) Project Plan (tentative name) Stage of the New City

Environmental assessment is mainly carried out based on the Environmental Assessment Law.



### Approaches to Environmental Consideration at Each Stage of Establishing the Master Plans and Others Plans

#### \* Strategic Environmental Assessment

Strategic environmental assessment is a procedure for evaluating and understanding the environmental impact to assure that the environment is considered sufficiently in the stage of initial policy or preliminary planning for each individual project plan. A supplementary resolution to the bill of the Environmental Assessment Law pointed out that a concrete study should be rapidly promoted to establish a system based on international trends and the present situation in Japan. The Ministry of Environment established the "Panel for Comprehensive Research on Strategic Environmental Assessment" in FY 1998, and has been carrying out comprehensive investigation and research on the implementation status of related systems to systemize environmental assessment.

#### [Constitution of the Panel]

Hisato Ide	(Professor Emeritus of the University of Tokyo) (Visiting Professor of the Waseda University)	< Chairman >
Akira Kameyama	(Professor of the Agricultural Department of the Tokyo University of Agriculture and Technology)	
Masaaki Kobayashi	(Director of the Environmental Impact Assessment Division, Integrated Environmental Policy Bureau, Ministry of the Environment)	
Masaaki Hosomi	(Professor of the Faculty of Engineering Department of the Tokyo University of Agriculture and Technology)	
Toshinori Mizuguchi	(Professor of the System Engineering Department, Shibaura Institute of Technology)	
Tsuneyuki Morita	(Director of the Socio-Environmental Systems Division, National Institute for Environmental Studies) (Professor of the Graduate School of the Tokyo Institute of Technology)	

# Report of the Panel for How the New City, the Relocation Destination, Should Be Based on a New Urban Theory

The "Panel for How the New City, the Relocation Destination, Should Be Based on a New Urban Theory," chaired by Professor Takashi Onishi of the Institute of Frontier Science and Technology of the University of Tokyo and consisting of experts in the areas of urban planning, urban culture, life style and others, has been studying how the new city, the relocation destination, should be as a city to be symbolic of the course that Japan must take. The Panel sorted out fundamental approaches to the formulation of the new city, the relocation destination, and prepared a report on the following items:

- (1) A scenario of coping with urban problems for getting solution
- (2) A scenario of formulating and creating five-sense charm in the new city, the relocation destination

## [Summary of the Report]

### 1. Fundamental Approaches to the New City, the Relocation Destination

How the new city, the relocation destination, is studied based on the following basic approaches:

- (1) To take the lead in solving "urban problems of today" and doing away with the "limits of the twentieth century city" and show a model of new cities in the twenty-first century throughout the country and overseas.
- (2) In solving problems, plans such as introducing various frontier technologies of urban construction should be deployed so as to spread these frontier technologies throughout the country and overseas, for promoting technology development.
- (3) Simultaneously, the new city, the relocation destination, should possess various charms, such as being agreeable towards supporting unique personal exchanges and an abundance of nature and culture, as a city representing Japan. In addition, it should initiate the birth of a new lifestyle for the citizens; a lifestyle supported by new technologies and other factors.

### 2. Strategic Scenario of Formulating the New City, the Relocation Destination

How the new city, the relocation destination, is studied based on the following basic approaches:

#### (1) Scenario of Coping with Urban Problems

In the new city, the relocation destination, four layers, that is "New Urban Infrastructure," "New Lifestyle and Work-Style," "Nucleus of Personal Exchange," and "Five-Sense Charm\*," interrelate with each other and produce a suitable circulation for solving problems and create a unique urban style and culture.

#### \* Five-Sense Charm

This means charm that can be felt by all five human senses (for instance, a feeling of presence, person-to-person relationship, enjoyable get-together, etc.)

Conceptual Drawing Related to the Scenario of Solving Problems by Coping with Urban Problems

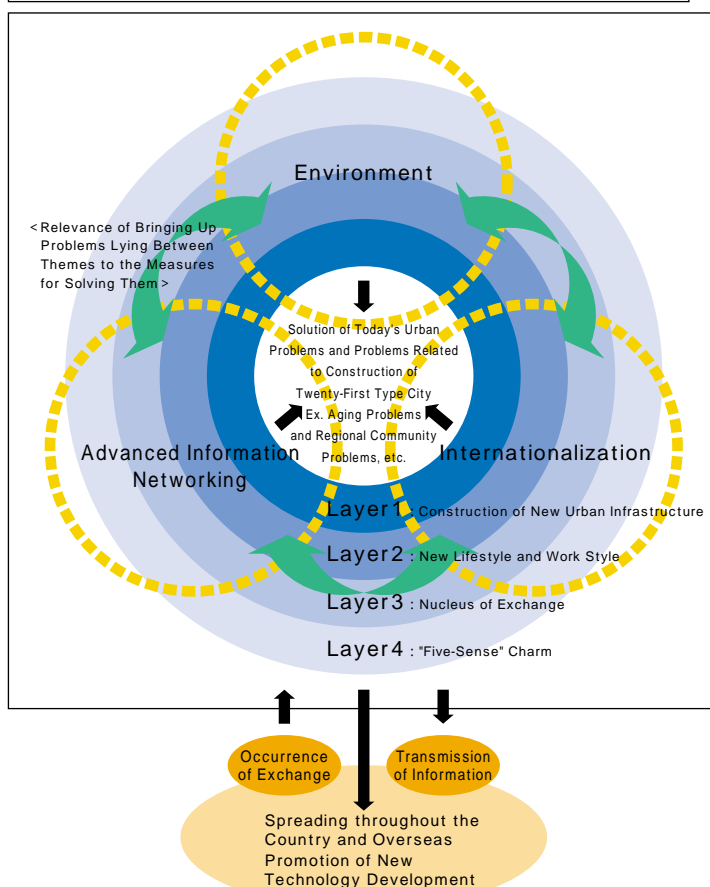


Image of Details of Four Layers Constituting Urban Activity System

Layer 1	<ul style="list-style-type: none"> <li>High-Speed and Large-Capacity Communication Network and Various Systems of Education, Medical Treatment, Disaster Prevention, and Others Utilizing the Network</li> <li>Recycling System for Resources and Energy</li> <li>Transport System Utilizing Information Technology and Environmental Load Decrease Technology</li> <li>The Nature, such as Forests and Rivers Existing in Cities Supporting Eco-Friendliness</li> <li>Facilities for Supporting Social Activities by Females, the Aged, and Foreigners in a Different Way</li> </ul>	New Urban Infrastructure
Layer 2	<ul style="list-style-type: none"> <li>Life and Work Style Recognizing Conservation of Natural Environment</li> <li>Life and Work Style in an Advanced Information Network Society</li> <li>New Life Style Concerning Education, Medical Treatment, and Welfare</li> <li>Life and Work-Style focusing not on the Workplace but on the Community</li> </ul>	New Life and Work Style
Layer 3	<ul style="list-style-type: none"> <li>World Core Facilities and Activities in the Specific Areas Such as Environment and Culture</li> <li>Research Bases in the Specified Areas Such as Environment and Advanced Information</li> <li>Characteristic and Unique Urban System</li> </ul>	Nucleus of Exchange
Layer 4	<ul style="list-style-type: none"> <li>Fun and Pleasure of the Place Where People Meet Each Other</li> <li>Neighborhoodness, Disorderliness, and Bustle</li> <li>Beauty and High Quality</li> <li>Complex and Complicated Land Utilization (Function) Development</li> </ul>	Five-Sense Charm



(2) Scenario of Growth of the New City, the Relocation Destination  
 <Image of the City at Its Opening (when the first Diet session is convened)>

In the new city, the relocation destination, the Diet city and the existing cities around it will construct an urban network to complementarily coordinate with each other in their functions and activities. The construction will be carried out step by step and gradually, while responding flexibly to the trend of the times and social economic demands to minimize financial expenditures.



Distribution of Population

(Shown in red are areas occupied by relocating employees related to capital functions + service function employees + their family members (Assumed to be 100 thousand persons by the Investigation Committee for the Relocation of the Diet and Other Organizations)).

(2) Scenario of Formulating and Creating Five-Sense Charm

The new city, the relocation destination, must both assure a distinctive quality as a city representing Japan, with orderliness, cleanliness, and beauty as a new city, and yet be regarded as a "Fun City," with its own brand of disorder and bustle, but also to possess a flexibility to respond to changes of the times and its needs. In particular, it is necessary to guarantee ample space in which the citizens, enterprises can develop activities freely and independently for creating five-sense charm.

Image of the City at its Opening  
 (when the first Diet session is convened.)



[Members of the Panel]

Takashi Onishi	(Professor of the Research Center for Advanced Science and Technology, the University of Tokyo) <Chairman>
Shigeru Satoh	(Professor of the School of Science and Engineering, Waseda University)
Yumiko Sato	(General Manager of the Research Institute on Continuity and Change in Life)
Masumi Shiraishi	(Senior Researcher of the NLI Research Institute)
Takashi Todokoro	(Professor of the Department of Regional Policy, Takasaki City University of Economics)
Masatake Murahashi	(Professor of the College of Science and Engineering, Ritsumeikan University)

The Capital Functions Relocation Planning Division of the National Land Planning Bureau, Ministry of Land, Infrastructure and Transport (MLIT) is exhibiting the Capital Functions Relocation Pavilion at the Internet Fair. Its status up to the present time, two months after its opening, is introduced here.

## 1. Urban Construction of the Capital Function City

### [Introduction of the Plan]

One scene is chosen every month from the computer graphics (CG) of the capital function city planned by MLIT in 2000. Opinions about the scene are then requested for a specific period (about two weeks) on the Internet. The opinions given are sorted by the Pavilion Manager, and one or more drafts of images reflecting them are made and introduced for soliciting people's votes. Each image selected by the voting will be reflected on the scenes of the virtual capital function city to be made in November 2001. The results of the first and second round votes are introduced here.

### [The First: Transit Mall]

(an urban area in which general vehicle traffic is prohibited, and only public transport, such as buses and streetcars as well as pedestrians is allowed to pass through)

Sixty-four opinions were accepted from December 31, 2000 to January 15, 2001, five kinds of images were made based on those opinions to invite voting, and an image depicting "serene Japanese-style rows of houses including Japanese-style buildings and little streams" was selected.

< CG Image Planned by the National Land Agency in 2000 >



< Image of the Transit Mall Selected >



### [The Second: Housing Area]

Fourteen opinions were accepted, five images were made based on these opinions to invite voting, and an image showing "a town in which biotopes are laid out in the neighborhood to promote a close feeling of nature" was selected.

< CG Image Planned by the National Land Agency in 2000 >



< Image of the Housing Area Selected >





## 2. Inpaku Capital Function City Image Contest

### [Introduction of the Plan]

We are inviting people to paint urban images freely without following the various images of the capital function city painted in the past. We will collect those images and introduce them in the Pavilion to carry out popularity voting. Applications are invited from elementary school and junior high school categories and the general section.

- (1) Ninety works were submitted by elementary school pupils and junior high school students, and two works by general persons.
- (2) To solicit votes for these works on the Internet, the images shown below were selected as excellent monthly works for January and February.

< Image Selected as the Excellent Monthly Work for January >  
"Diet Building I Dream of" by Mr. Kazushi Ichimura



< Image Selected as the Excellent Monthly Work for February >  
"International New City Where People in the World can Come and Go Freely, and Take Part" by Kashihiro Nakakura



## 3. Pavilion Guide Character Design Contest

### [Introduction of the Plan]

We plan to have an amiable virtual character that can effectively act as a guide to the Pavilion and appears in the image. In opening the Pavilion, the characters were first requested and selected by popularity voting on the Internet. The selected character will explain events in the Pavilion and support image operations with animation.

- (1) Twenty-six works were submitted by January 31.
- (2) During voting on the Internet from December 31, 2000 to February 28, 2001, the work shown on the right was selected as the most popular guide character.

< Character Selected >  
"Chinapple" by Miss Miki Noda



# ★ Topics

## The Holding of "On-Line Lecture Meetings" Being Held

Lecture meetings are held on the MLIT Capital Functions Relocation Homepage, inviting knowledgeable persons in different disciplines, such as academic and economic sectors. Please visit this web site.

(Until March: <http://www.nla.go.jp/daishu/online/online-f.html>)

(From April: <http://www.mlit.go.jp/kokudokeikaku/daishu/online/online-f.html>)

### < Published in February >

Mr. Jitsuro Terashima (Director of Mitsui Global Strategic Studies Institute)

Theme "Make Discussions on Capital Functions Relocation a Chance of Social Reform"

Ms. Midori Miyazaki (Assistance Professor of the Department of Political Information, Chiba University of Commerce)

Theme "Get Consensus as a Vision Formulation to Ask about the Shape of Society"

Mr. Ryuuzaburo Kaku (Honorary President of the Canon Inc.)

Theme "Transfer the Capital for Realizing the Idea of 'Living Together'"

### < Published in December >

Mr. Kazuo Yahata (Commentator)

Theme "Try to Get Improved Version of Discussion about Capital Functions Relocation"

### < Published in October >

Mr. Sakyo Komatsu (Writer)

Theme "Seek for a City That Gives Limitless Encouragement to the Future of Mankind"

## Major Recent Activities Related to the Capital Functions Relocation in Each Region

January 24. The Executive Committee for the Hokuto Region Capital Functions Relocation Coordination Project held the "Lecture Meeting for Realizing Capital Functions Relocation" in the Tokyo Metropolitan Area.

February 5. The Chubu Economic Federation (Incorporated) announced the "Approaches to Capital Functions Relocation in the Chuo Region and Their Images."

February 7. The "Hokkaido, Tohoku, and Northern Kanto Economist Convention for Promoting Capital Functions Relocation" was held in Miyagi Prefecture.

February 8. The "Capital Functions Relocation Symposium 'Problems of Japan in the Twenty-First Century'" was held in Gifu Prefecture.

February 13. The "Capital Functions Relocation Forum in Shirakawa" was held in Fukushima Prefecture.

February 18. The "Kohga and Eastern Ohmi New Capital Forum" was held in Shiga Prefecture.

From January to February 28, Public Relations (PR) posters titled "Promotion of Capital Functions Relocation" have been displayed in trains within Aichi Prefecture.

In the middle of February, the Relocation of the Diet and Other Organizations PR posters were displayed at railroad stations in Tochigi Prefecture.

## Accessing Various Information

Various information concerning the capital functions relocation has been provided on the Ministry of Land, Infrastructure and Transport Homepage on the Internet.

Also if you are interested in items in this leaflet and others, please let us know. We will pleasingly send related documents to you. We are awaiting your contact.

## We are Waiting for Your Contact

Address : Capital Functions Relocation Planning Division, National Land Planning Bureau, MLIT

12 Kasumigaseki 1-Chome, Chiyoda-ku, Tokyo 100-8918 Japan

Homepage : Until March; <http://www.nla.go.jp/daishu/index.html>

From April; <http://www.mlit.go.jp/kokudokeikaku/daishu/index.html>

E-Mail : [itenka@mlit.go.jp](mailto:itenka@mlit.go.jp)

Telephone : +81-3-5253-8365 FAX : +81-3-5253-1573