



## ~ Think Together about the Capital Functions Relocation of Japan ~

### Trends in the Diet

#### House of Representatives

The Special Committee for the Relocation of the Diet and Other Organizations held a meeting on October 25 (Thur.), inviting the following persons, who contributed their opinions on the Committee's Homepage or through other media:

Mr. Masaharu Ueda (a consultant engineer); Mr. Hiroshi Otomo (a company employee); Mr. Toshimasa Kaige (a self-employed person); Mr. Nobuyoshi Suzuki (a local government employee); Mr. Susumu Tajima (a local government employee); Mr. Kosaku Nishio (a former government official); Mr. Mitsuji Nomura (an administrative commentator); Mr. Itaru Murayama (a company employee).

After invited persons stated their opinions, the participants had a question and answer session.

Mr. Tadashi Kakei (a company employee), an opinion contributor, who was unable to attend the Committee meeting, stated his opinions on relocating the Diet and other organizations on October 20 (Sat.) in the presence of Chairman Nagai of the Committee. The participants then had a question and answer session.

Examples of the opinions stated by invited persons are as follows.

- (1) The new capital of Japan must change the nation's and people's paradigm as the "New Millennium Capital", drive structural reform of the social and economic systems, and lead construction of the Asia Pacific cultural model.
- (2) I object to the capital functions relocation for three reasons. First, further increases of the national debt are undesirable. Second, Tokyo should be strengthened to prevent degradation of Japan's international competitive power. Third, we enjoy the merits of the monopole concentration, although we are suffering from commuter rush-hour traffic, soaring land prices, and traffic congestion.
- (3) The people's awareness and economic structure must be reformed for Japan to free itself of its present "Saturated Condition," and the capital functions relocation should be accomplished to obtain that objective. I would like to see everybody consider Japan deliberately in the new city coexisting with nature rather than in a noisy city.
- (4) The capital functions relocation is an urgent issue for protection against large-scale disasters. It is important that the new capital be able to cooperate closely with Tokyo because a redundant capital structure cannot be avoided when capital functions are being relocated step by step over tens of years, and face-to-face cooperation is still essential in serious circumstances.
- (5) Discussion on the national administrative reform within the capital relocation deliberators is insufficient. Monopolar concentration of power since the Meiji era should be corrected first and its functions should be break up before relocating the Diet and other organizations regionally.

For details of the opinions, questions and answers, please refer to the Internet Homepage "Proceedings of the Diet Retrieval System" (<http://kokkai.ndl.go.jp/>). Details of opinions can also be obtained from the Special Committee for the Relocation of the Diet and Other Organizations of the House of Representatives Homepage (<http://www.shu-kokkaiiten.go.jp/index2.html>).

## Introduction of the Internet Fair "Capital Functions Relocation Pavilion" (<http://www.inpaku.go.jp/>)

The Capital Functions Relocation Planning Division, National and Regional Planning Bureau, Ministry of Land, Infrastructure, and Transport (MLIT), is exhibiting the Capital Functions Relocation Pavilion at the Internet Fair. Now that only about one month is left before its closing date, part of the exhibition displayed in the past is introduced here.

### 1 . Virtual Capital Function City Construction

**【Introduction of the Plan】** Several scenes were selected from the computer graphics (CGs) of the capital function city planned by the National Land Agency in FY 1999, and your opinions about those scenes were solicited on the Internet. The Pavilion manager subsequently produced five draft images incorporating your opinions for each theme and introduced them to solicit your votes. Images selected for each theme are as follows.

[ Transit Mall (Streets on which passage of general cars is prohibited and only passage of public transport and pedestrians are allowed) ]

[ Housing Area ]

[ Light Rail Transit (LRT)(Eco-considerate and human-friendly vehicles such as streetcars) ]



[ Artificial Lakeside ]



[ Governmental Offices' District ]



[ Diet Square ]



[ Embassy District ]



[ Stall Streets ]



Various scenes of the virtual capital function city constructed based on contributed opinions were displayed since the beginning of November using voices, animation, and other means. Please take a look at these, too.

### 2 . Inpaku Capital Function City Image Contest

**【Introduction of the Plan】** We asked participants to depict city images freely without sticking to various images of the capital function city drawn in the past and introduced those images in the Pavilion to solicit your votes. The images were solicited in the gradeschool and junior high school student section and the general section, and a total of 596 applications were submitted. Monthly winning images selected by popularity vote are shown on the next page.

## 【General Section】

**Aerial City**  
Mr. Hikaru Ueno



Diet Building Symbolizing  
History and Culture Yoshizo Hazeta



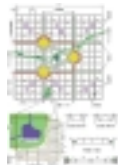
Prime Minister's Official Building Constructed in the  
Original Landscape of Japan Yoshizo Hazeta



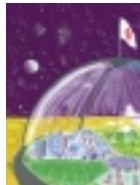
**Town of Water**  
Mr. Takao Ishikawa



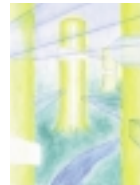
City Coexisting with Natural  
Ecological System Yoshizo Hazeta



「the Forty-eighth Prefecture」  
Mr. Susumu Ichikawa



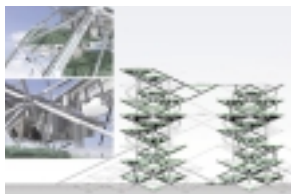
**City with the Nature**  
Mr. Sumiaki Hanaoka



Country Recurring to Trees  
Mr. Masahiro Fujitani



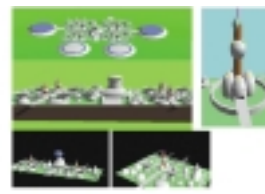
**Hyper-Capital**  
Hyper-Building Research Association



**Near-Future City Type Apartment**  
STUDIO-RUN



**Butterfly Type City (Ecological City)**  
Mr. Akira Otsuka



## 【Schoolchild and Junior High School Student Section】

"International New City" Which People in the World  
can Enter and Leave Freely and Participate in

Diet Building Which I Dream of  
Mr. Kazushi Ichimura



New Capital in My Dream  
Miss Seiko Kato



Mr. Takahiko Hakagura



International Square with the  
Nature and People Miss Shiori Kakegawa



**Future City**  
Mr. Shota Kamikubo



**City with Full of the Nature**  
Miss Mizuki Ikeda



**Full of Greenery**  
Miss Fumine Tateishi



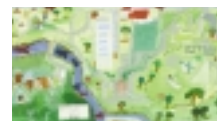
Third-Grade Pupil of Johoku Elementary School  
Miss Maki Toshima



Fifth-Grade Pupil of Josai Elementary School  
Mr. Hitoshi Takahashi



Second-Grade Pupil of Omori Elementary School  
Mr. Shun Kumasaka



First-Grade Pupil of Sakurano-Seibo-Gakuin Elementary School  
Miss Moe Kobayashi



Second-Grade Pupil of Sakurano-Seibo-Gakuin Elementary School  
Miss Haruka Shibata



First-Grade Pupil of Hara Town Third Elementary School  
Miss Satoko Ogata



Third-Grade Pupil of Takahira Elementary School  
Mr. Shogo Tamaki



Third-Grade Pupil of Kagamiishi Third Elementary School  
Miss Nana Kashiwara



Popularity Voting will be conducted once again from November 1 to 30 on a collection of excellent works selected for each month over the past year. We solicit your votes to decide the winning work. Please vote for the work that you think is the best over the past year.

Internet Fair will be closed on December 31, but part of the exhibition will continue to be shown on the MLIT Homepage. Please visit the site at [http:// www.mlit.go.jp/kokudokeikaku/daishu/index.html](http://www.mlit.go.jp/kokudokeikaku/daishu/index.html).



# ★ Topics

## Capital Functions Relocation is Being Studied at Various Places



Eighth-Grade Students of Okazaki City Yahagi-Kita Junior High School in Aichi Prefecture

On October 16, an official of the MLIT Capital Functions Relocation Planning Division visited Okazaki City Yahagi-Kita Junior High School to give a lecture on the capital functions relocation as part of the social studies class for its eighth-grade students class 9. The students seemed to be considering the relocation seriously because they actively asked questions about how the relocation would affect finances and the environment.

### Recent Major Activities Related to the Capital Functions Relocation in Each Region

October 14 and 20. The Tochigi Prefectural Residents' Council for Promoting the Relocation of the Diet and Other Organizations conducted "Nasu Region" observation tours for the relocation of the Diet and other organizations.

October 26. Tokyo Metropolis announced "About Reexamination of the Capital Relocation."

October 27 and 28. The Fukushima Prefectural Residents' Council for Promoting the Relocation of the Diet and Other Organizations conducted tours to experience a "Forest-Clad City."

November 3. Tokyo Metropolis started running wrapping buses for opposing the capital relocation.

November 6. The Executive Committee for the Conference to Think about the Capital Functions Relocation (Including Gifu Prefecture) held a meeting.

November 9. Nishi-Nasuno Doyukai (Economic Association) held a Symposium on the Relocation of the Diet and Other Organizations.

November 16. The Preserved Area Investigation Subcommittee of the Gifu-Tono Region Association for Promoting Attraction of the Capital Functions held a gathering for discussions about the capital functions relocation and natural environment preservation.

### Miniature Lecture on the Capital Functions Relocation "Zero-Emission City"

The "Zero Emission" program seeks to minimize environmental loads (such as waste) caused by urban activities. The environmental load imposed by the "New City" created by the capital functions relocation will be reduced to nearly to the absolute minimum extreme by working out an urban layout plan and introducing frontier technology. It also contributes to realizing zeroemissions in various regions by actively distributing information domestically and overseas. We will create a zero-emission city through the following three concepts:

Realization of cluster type compact city (small cities are laid out like a bunches of grapes)

Realization of a "Frontier Model City" (Frontier environmental load systems, such as joint trash collection systems, are introduced.)

Construction of "Zero-Emission Network Base" (Construct a base for widely disseminating zero-emission disposal measures.)

For further information, please visit the web site at <http://www.mlit.go.jp/kokudokeikaku/daishu/basic f.html>.

## Accessing Various Information

Various information concerning the capital functions relocation has been provided on the MLIT Homepage on the Internet. Please visit this web-site.

Also if you are interested in items in this leaflet and others, please let us know. We will pleasingly send related documents to you. We are awaiting your contact.

## We are Waiting for Your Contact

Address : Capital Functions Relocation Planning Division, National and Regional Planning Bureau, MLIT

1-2, Kasumigaseki 2-Chome, Chiyoda-ku, Tokyo 100-8918 Japan

Homepage : <http://www.mlit.go.jp/kokudokeikaku/daishu/index.html>

E-Mail : [itenka@mlit.go.jp](mailto:itenka@mlit.go.jp)

Telephone : +81-3-5253-8366 FAX : +81-3-5253-1573