



## ~ Think Together about the Capital Functions Relocation of Japan ~

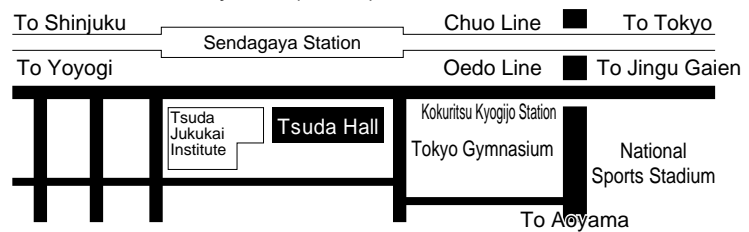
### The Capital Functions Relocation Symposium to be Held

The Ministry of Land, Infrastructure, and Transport (MLIT) is planning to hold the second Capital Functions Relocation Symposium in FY 2001 to stimulate discussions concerning the capital functions relocation. You are cordially invited to participate.

In the symposium, the capital functions relocation will be discussed to determine how the capital functions relocation should be implemented in the twenty-first century, considering Japan's future roles.

1 . Date and Time: From 14:00 to 17:00 on February 13 (Wed.), 2002

2 . Place: Tsuda Hall  
(18-24, Sendagaya 1-Chome,  
Shibuya-ku, Tokyo  
Tel. 03-3402-1851)



Nearest Stations: Two minute on foot from Kokuritsu Kyogijo Station of the subway Oedo Line

3 . Constitution :

(1) Keynote Speeches (for 60 Minutes)

Speakers : Mr. Taichi Sakaiya (an author)

Mr. Kazuki Kasuya (President of Toshi Shuppan Co., Ltd.)

(2) Panel Discussion (for 105 Minutes)

Panelists: Ms. Kuniko Inokuchi (Professor of Sophia University)

Ms. Reiko Okutani (President of The R Co., Ltd.)

Mr. Masayasu Kitagawa (Governor of Mie Prefecture)

Mr. Koichi Hori (President of Dream Incubator Co., Ltd.)

Coordinator: Mr. Hiroyasu Saito (Executive Commentator of NHK)

4 . Sponsorship and Supports :

Sponsored by : Ministry of Land, Infrastructure and Transport

Supported by : Japan Federation of Economic Organizations and the Japan Junior Chamber Inc.

5 . Others :

Those who want to participate in the symposium are requested to submit an application in advance. We will close the list as soon as the number of applications reaches the quota (450 persons).

Admission will be free.

To apply for participation, please refer to the bottom part of Page 3.

### "On-Line Lecture Meetings" Being Held

On the MLIT Capital Functions Relocation Homepage, lecture meetings have been held with thirty-two knowledgeable persons in various disciplines such as academic and economic sectors and the following lectures are newly added.

<January> Mr. Wakao Fujioka (a producer)

Theme: "Show the Dream by the Capital Functions Relocation"

Mz. Reiko Okutani (President of The R Co., Ltd.)

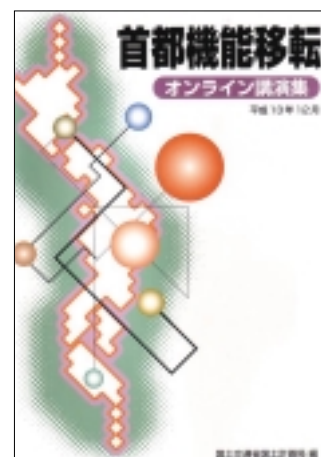
Theme: "Let's Carry Out Structural Reform First and Then Consider the Capital Functions Relocation"

Please visit this web site.

(<http://www.mlit.go.jp/kokudokeikaku/daishu/online-f.html>)

## Knowledgeable Persons' Opinions Concerning the Capital Functions Relocation Assembled in a Book

Ministry of Land, Infrastructure and Transport has been introducing opinions of knowledgeable persons, who play active parts in various sectors, concerning the capital functions relocation, in the "On-Line Lecture Meetings" on its Homepage since FY 1999. Thirty persons' opinions published on the Homepage in FY 1999 and 2000 were recently assembled in a booklet. The booklets will be distributed to libraries and other facilities in all parts of Japan. Those who are interested in the booklet should contact the section of the Division in charge.



## Panel for Studying the New City, Relocation Site as an International Political Center Established

The report submitted by the Council for the Relocation of the Diet and Other Organizations (dated December 1999) stated that the new city, relocation site, is expected to represent those elements that symbolize the direction of Japan's advancement. The report specifically lists "building new information network systems," "consideration of the environment," "functions of a city related to international political activities," and "Majestic scenery" as four items to be considered in constructing the new city. The Capital Functions Relocation Planning Division, National and Regional Planning Bureau, MLIT, recently established the "Panel for Studying the New City, Relocation Site, as an International political center" with the members described below to investigate and study the "functions of a city related international political activities," one of the four items enumerated in the report. The purpose of this panel is to conclude the practical structure of an "international political center" in the new city, relocation site. The panel's first meeting was held on December 21 (Fri.) and various subjects, such as roles that should be played by Japan's international political center, were actively discussed. Two more meetings are scheduled in FY 2001.

Members of the Panel for Studying the New City, Relocation Site, as an International political center

Chairman	Mr. Takashi Todokoro	Professor of the Regional Policy Department of the Takasaki City University of Economics
	Mr. Ryou Oshiba	Professor of Hitotsubashi University
	Mr. Monte Cassim	Professor of Ritsumeikan University
	Mr. Jitsuro Terashima	President of the Mitsui Global Strategic Studies Institute
	Mr. Toshiki Mogami	Professor of the International Christian University

(Honorific titles omitted)

# Internet Fair Closed

Following the closure of the Internet Fair the Capital Functions Relocation Pavilion was also closed at the end of 2001.

The following images were selected through the voting for the best work in the capital function city image contest, the last event of the fair. Your cooperation is highly appreciated.

< Schoolchild and Junior High School Student Section >

Hara Town Third Elementary School  
in Fukushims Prefecture  
Miss Satoko Ogata

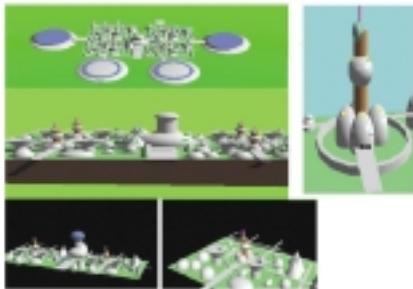


< General Section >

Butterfly City (Ecological City) by Mr. Akira Otsuka

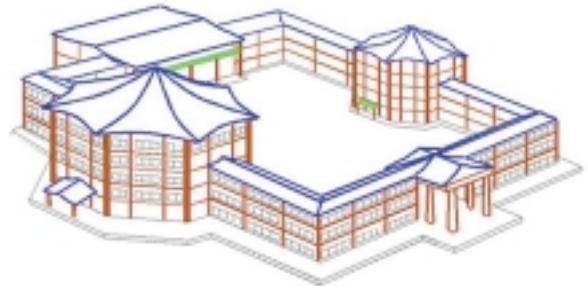
Concept: An eco-friendly city using a butterfly type solar paddle in the sky and having four towers, which are power stations equipped with fuel cells (in the round section surrounding the city)

The city is designed to look like a butterfly when seen from the sky.



Diet Building Symbolizing Japan's History and Culture by Mr. Yoshizo Hazeta

Concept: The new diet building will be built of wood considering the global environment. The building, which houses the main conference halls for the House of Representatives and the House of Councilors, will be designed on the motif of Yumedono of the Horyuji Temple to create an image of a building furnished with corridors laid out rectangularly and let people feel Japan's history. A Japanese garden will be built in the space enclosed by this building to serve as the symbol of nature and the traditional beauty of Japan to Japanese and foreign visitors.



Though the Internet Fair was closed, part of the Pavilion, such as the opinion exchange space, will be maintained continuously on the MLIT Homepage. Please visit this web site

(<http://www.mlit.go.jp/kokudokeikaku/daishu/index.html>).

## Application for Participation in the Capital Functions Relocation Symposium to be Held on February 13

- If you desire to participate, please fill out the application form shown below, and FAX it to the address shown on the application form. To apply through e-mail, enter the specified items, and send the form to ([jimukyoku@mpc-inc.co.jp](mailto:jimukyoku@mpc-inc.co.jp)).
- We will issue admission tickets after accepting the applications. Please bring the ticket with you on the day of the symposium.
- Please understand in advance that we will close the list as soon as the number of applicants reaches the quota.

FAX Application Form for the Capital Functions Relocation Symposium		FAX +81-3-5468-0557
Name of Organization or Office (Not required for individual participation) :		
Address : 〒		TEL FAX
Names of Participants		Job Assignment and Managerial Position

# ★ Topics

## Capital Functions Relocation is Being Studied at Various Places



### Juniors of the Law Department of Daito Bunka University

A MLIT official visited Daito Bunka University to give a lecture on the capital functions relocation while interspersing his speech with foreign examples as part of the "urban politics theory" class for juniors of the University's Law Department on December 10. Students actively asked questions concerning intentions of residents in candidate relocation sites, regional revitalization that could result from the relocation and effects of the relocation on finance and the environment. Each student seemed to think seriously of the advantages and disadvantages of the relocation.



### Kochi Engineering University

The Director of the MLIT Capital Functions Relocation Division gave a lecture utilizing presentation by a personal computer as part of the "national planning" class at the Kochi Engineering University on January 15. He answered questions brought up by the students and professors and exchanged opinions with them to deepen their understanding in areas where they had been in doubt.

## Panel Display of the Capital Functions Relocation to Be Widely Developed in all parts of Japan

The MLIT Capital Functions Relocation Planning Division prepared panels (a set of eight sheets, size: 73cm x 103cm) for introducing the capital functions relocation and is soliciting proper places to display them. If you know of any proper places, such as public facility lobbies attracting people's attention, please contact us at the address shown at the bottom.

## Major Recent Activities Related to the Capital Functions Relocation in Each Region

- December 20 The Tochigi Prefectural Residents' Council and the Fukushima Prefectural Residents' Council for Promoting the Relocation of the Diet and Other Organizations held the Capital Functions Relocation Forum in Koriyama -- Proposal for Constructing a Model City to Contribute to the World Entering the New Century.
- December 20 Governors of eight prefectures related to the candidate relocation sites held an informal gathering in Tokyo and made an appeal for an early realization of the capital functions relocation.

## Accessing Various Information

Various information concerning the capital functions relocation has been provided on the MLIT Homepage on the Internet. Please visit this web-site.

Also if you are interested in items in this leaflet and others, please let us know. We will pleasingly send related documents to you. We are awaiting your contact.

## We are Waiting for Your Contact

Address : Capital Functions Relocation Planning Division, National and Regional Planning Bureau, MLIT

1-2, Kasumigaseki 2-Chome, Chiyoda-ku, Tokyo 100-8918 Japan

Homepage : <http://www.mlit.go.jp/kokudokeikaku/daishu/index.html>

E-Mail : [itenka@mlit.go.jp](mailto:itenka@mlit.go.jp)

Telephone : +81-3-5253-8366 FAX : +81-3-5253-1573