



~ Think Together about the Relocation of the National Diet and Related Organizations ~

Trends in the Diet

The Inter-party Conference Committee of Both Houses on the Relocation of the National Diet and Related Organizations

The sixth meeting of the Inter-party Conference Committee of Both Houses on the Relocation of the National Diet and Related Organizations was held on April 15, 2004, Thursday. In the meeting, members exchanged their opinions freely on the committee's agenda of "Method for seeking the Diet's decision".

The Committee agreed that they should sort out the disputed points, and continue the discussion from the next meeting.

Visit for studying the Administrative Capital Relocation Project of Korea

In Korea, the work for the Administrative Capital Relocation Project is underway. On December 29, 2003, the Special Act for the Administrative Capital Relocation, which provides a legal basis for relocating the administrative capital smoothly and as planned, was passed by the plenary session of the Parliament (Please refer to New Era Vol. 44). Therefore, visiting party of the Ministry of Land, Infrastructure and Transport, Japan, including Mr. Matsuura, Deputy Director-General, visited Korea from the 9th to 11th of March to study the situation concerning the progress of the project. They exchanged opinions with members of the Administrative Capital Relocation Project Team of Korea (hereinafter referred to as Project Team), and visited the Chungcheong area.

1. Exchange of Opinion with the Project Team



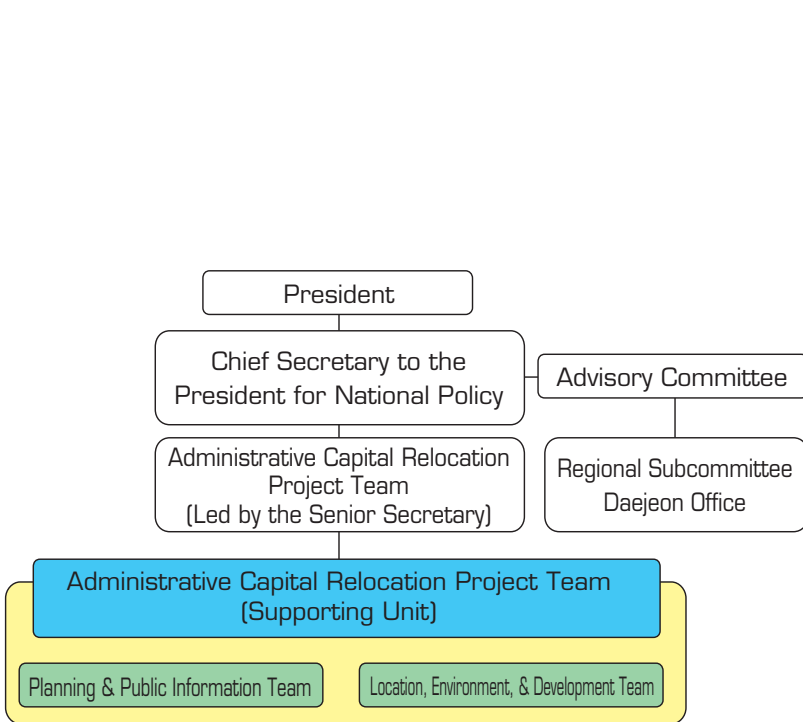
Representative of the Administrative Capital Relocation Project Team of Korea

The visiting party interviewed the Project Team, concerning topics such as how the Parliament passed the Special Act for the Construction of the New Administrative Capital and the work schedule up to selecting a site for the New Administrative Capital, which will be determined by the end of this year.

The Project Team explained the efforts made by concerned parties for the approval of the Special Act, work schedule up to selecting the site, requirements for candidate sites, and more.

2. Visit to the Chungcheong area

As the New Administrative Capital site will be selected in the Chungcheong area (Chungcheongbuk-do, Chungcheongnam-do, and Daejeon Metropolitan City), which is 100-150 km south of Seoul, by the end of this year, the party visited the area.



Organizations for the Administrative Capital Relocation Project



Location of the Chungcheong area
(Chungcheongbuk-do, Chungcheongnam-do, and Daejeon Metropolitan City)

On-Line Lecture Meetings Being Held

On-line lecture meetings are being held on MLIT's Web page for the Relocation of the National Diet and Related Organizations. Lecture meetings have been held with intellectuals in disciplines including academic and economic sectors. The following lectures have been newly added from March. Please visit the Web page at http://www.mlit.go.jp/kokudokeikaku/daishu/online/online_f.html.

Mr. Shuzo Taki (Writer)

Born in Kagawa Prefecture in 1947. Received the Akutagawa Prize for *Kaya no Ki Matsuri* in 1978.

Theme: Capital relocations and decentralization in history

- Topics
- Confronting a powerful civilization and relocating the capital
 - Capital relocations and decentralization in ancient Japan, where there were multiple capitals
 - Japan used to have a more decentralized society
 - Multiple capitals, as a mutual system of checks and balances between political powers
 - Historical patterns of Japan and the psychological attitude of the Japanese
 - Decision making mechanism for capital relocation
 - Relocation of capital functions meets the needs of the times
 - Multiple capitals required by our modern society



Professor Takashi Todokoro (Professor, Takasaki City University of Economics)

Born in Gunma Prefecture in 1948. Was a professor at Ritsumeikan University. Has been a professor at Takasaki City University of Economics since 1996. Is also the Director of the Regional Policy Research Center, Takasaki City University of Economics.

Theme: Image of a new capital function city that creates a national structure in the information age

- Topics
- Japan is going through a major structural change
 - Relationship between the changing times and regional/social structures
 - A city that leads the new era, and capital function relocation
 - From hierarchical network structure to horizontal network structure
 - Several mismatches that obstruct structural conversion
 - National structure re-formation should be developed as a far-sighted program
 - Formation of new national structure, and image of new capital function city



Ms. Motoko Ishii (Lighting designer)

Born in Tokyo. Worked for lighting design firms in Finland and Germany. Founded Motoko Ishii Lighting Design Inc. in 1968. Received the Medal with Purple Ribbon from the Japanese Government in 2000 for her contributions in the field of lighting design.

Theme: Dramatic effect that is required in the image of new cities

- Topics
- Significance of creating a new city
 - New capital function city as a showcase city
 - Importance of the night view as a dramatic effect of a city
 - What is the 21st century city?
 - Urban design that brings back the five senses of the Japanese
 - Urban development for the future, seen from the perspective of lighting design



Professor Yukio Kawamura (Professor, Graduate School, Waseda University)

Born in Fukuoka Prefecture in 1951. Entered the United Nations Headquarters in 1983. Held positions as a legal officer at the Executive Office of the Secretary General and as the chairperson of the property assessment commission at the U. N. Headquarters. Has been a professor at Waseda University since 1997.

Theme: Things to be done in order to advance capital function relocation

- Topics
- Relationship between capital function relocation and the genes of the Japanese
 - An idea for dispersing capital functions to three areas
 - Capital function relocation in Germany and Korea
 - What should be advocated from now on?
 - Improving the crisis-management system and capital function relocation
 - Things to remember when advancing capital function relocation
 - Consensus-building, seen in "kono yubi tomare", in which a child calls for friends to play together
 - Deeper discussion is needed concerning capital function relocation
 - In order to have more confidence in the 21st Century



★ T o p i c s

Recent Major Activities Related to the Relocation of the National Diet and Related Organizations in Each Region

- Members of the Inter-party Conference Committee of Both Houses on the Relocation of the National Diet and Related Organizations and eight Prefectural Governors of the candidate sites held an informal gathering for discussion on March 30. They had an animated discussion.
- The eight Prefectural Governors of the candidate sites held the first meeting of the Capital Function Relocation Study Group, right after the above-mentioned gathering. They proposed establishing a study group under the National Governors' Association, so that there could be wide discussion. They agreed that they should hold an informal gathering for discussion with intellectuals in many disciplines, and study many matters including crisis management, decentralization of authority, and dispersal of capital functions. They also agreed that they should use the new catchphrase, "Japan's security, vitality, and structural reforms start with the capital function relocation", wherever possible.

On the Opinion Exchange Space of our Web page

In the Opinion Exchange Space in the Website for the Relocation of the National Diet and Related Organizations, you can read opinions sent in by many people. You are also welcome to express your own opinions. We are looking forward to your accessing and using the Space.

Accessing Various Information

Various information concerning the capital functions relocation has been provided on the MLIT Homepage on the Internet. Please visit this web-site.

Also if you are interested in items in this leaflet and others, please let us know. We will pleasingly send related documents to you. We are awaiting your contact.

We are Waiting for Your Contact

Address : Capital Functions Relocation Planning Division, National and Regional Planning Bureau, MLIT

1-2, Kasumigaseki 2-Chome, Chiyoda-ku, Tokyo 100-8918 Japan

Homepage : <http://www.mlit.go.jp/kokudokeikaku/daishu/index.html>

E-Mail : itenka@mlit.go.jp

Telephone : +81-3-5253-8366 FAX : +81-3-5253-1573