

# **Transport Network Resilience to Critical events: A Gender Perspective**

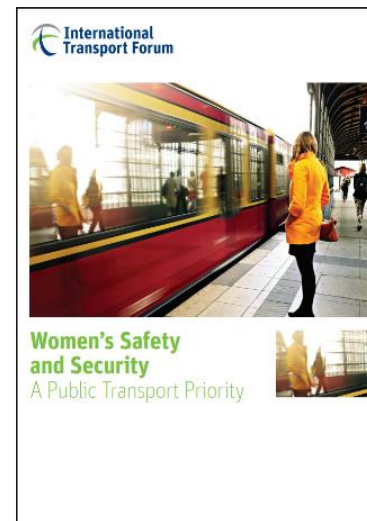
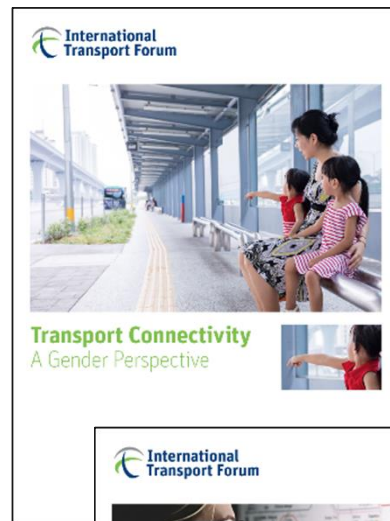
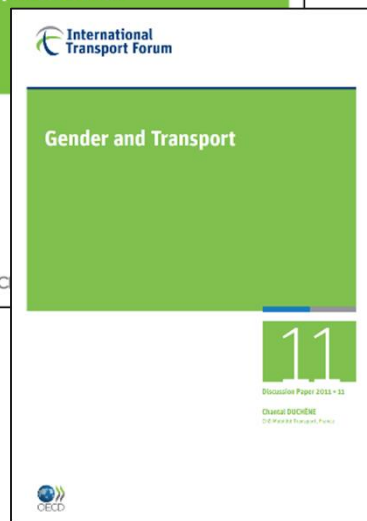
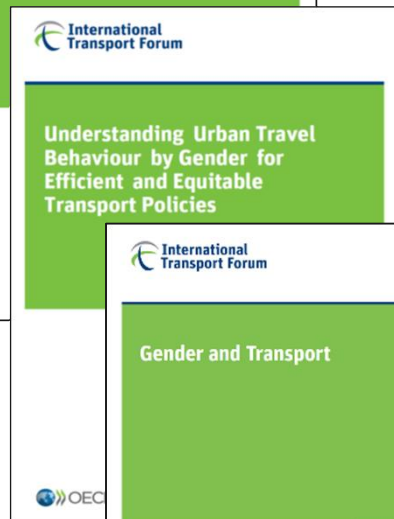
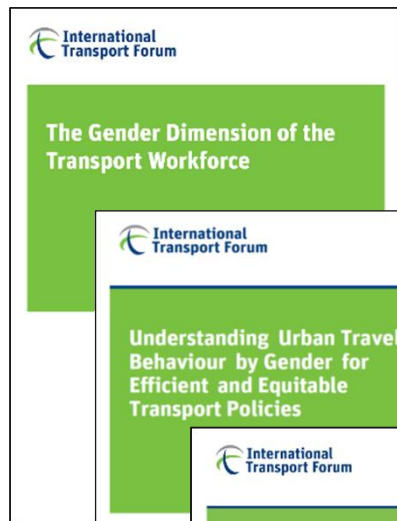
**Launch of a new gender project**

5 September1 ,2025  
Yukari KASAHARA

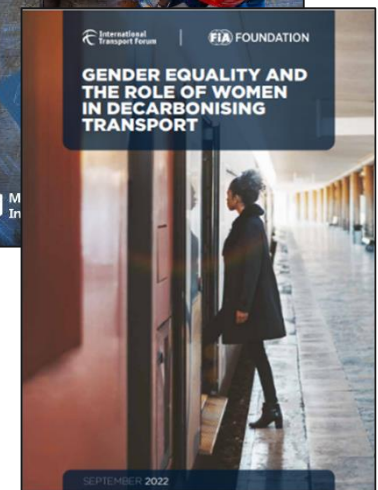
**01**

## ITF work on gender and ITF work on resilience

# ITF work on gender



<https://www.itf-oecd.org/itf-work-gender-transport>



# ITF work on resilience

International  
Transport Forum



## Performance of Maritime Logistics



Case-Specific Policy Analysis

International  
Transport Forum



## Broadening Transport Appraisal

Summary and Conclusions

188  
Pages

International  
Transport Forum



## Using Safety Performance Indicators to Improve Road Safety

The case of Korea



Case-Specific Policy Analysis

International  
Transport Forum

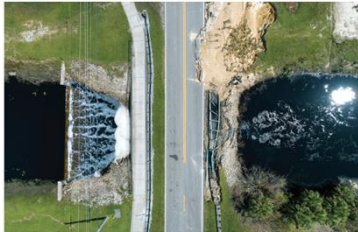


## Information Sharing for Efficient Maritime Logistics



Case-Specific Policy Analysis

International  
Transport Forum



## Transport System Resilience

Summary and Conclusions

194  
Pages

International  
Transport Forum



## Adapting Transport to Climate Change and Extreme Weather

Implications for Infrastructure Owners  
and Network Managers



Research Report

OECD

International  
Transport Forum



## Shaping Post-Covid Mobility in Cities

Summary and Conclusions

190  
Pages

International  
Transport Forum

## The Red Sea Crisis

Impacts on global shipping and the case for  
international co-operation

Background Paper

02

## Launch of a new project

Transport Network Resilience to Critical events:  
A Gender Perspective

# Transport Network Resilience to Critical events: A Gender Perspective

- **Gender influences transport resilience:**

Women's mobility patterns differ due to greater care responsibilities, time constraints, and trip chaining, which affect their mode choices and adaptation strategies during crises.

- **Crises amplify gender inequalities:**

Extreme events often worsen pre-existing disparities by limiting women's ability to move freely and safely, influenced by unequal power relations and intersecting factors.

- **Innovative gender-sensitive approaches needed:**

Traditional crisis management overlooks gendered impacts. Qualitative data is necessary to capture these effects adequately.

# Transport Network Resilience to Critical events: A Gender Perspective

- **Main objectives:**

1. To improve understanding of the intersection between gender equality and transport resilience,
2. To identify knowledge and data gaps and propose ways to address them, and
3. To develop policy recommendations that help countries and other stakeholders review their transport resilience strategies through a gender lens.

- **Project methodology and goals:**

- A combination of literature review, stakeholder engagement, surveys, and case studies in some countries to identify gaps and develop policy recommendations for integrating gender perspectives into transport resilience strategies.
- Its aim is to enhance inclusive, safe, and resilient mobility systems through improved data and planning.

# Thank you

Yukari KASAHARA  
Senior Transport Administrator & Policy Analyst  
2 rue André Pascal  
F-75775 Paris Cedex 16

Publication Alert

