

HUD NEW ORLEANS



OVERVIEW

Sylvia Purvis

Director,
Field, Policy & Management

Elvettra Gibbs

Director, Public and Indian
Housing

Cheryl Breaux

Director, Community Planning and
Development

**HUD NEW
ORLEANS
OPERATIONS
&
KEY STAFF**

Bam Gressett

Chief Counsel, Office of General
Counsel

Sonya M. Brister

Assistant Director, Fort Worth
Region, Office of Disaster
Recovery

Arlene Williams - Tillman

Enforcement Branch Chief, Fair
Housing and Equal Opportunity
(Out Stationed Ft. Worth, TX)

Carla Manzanares

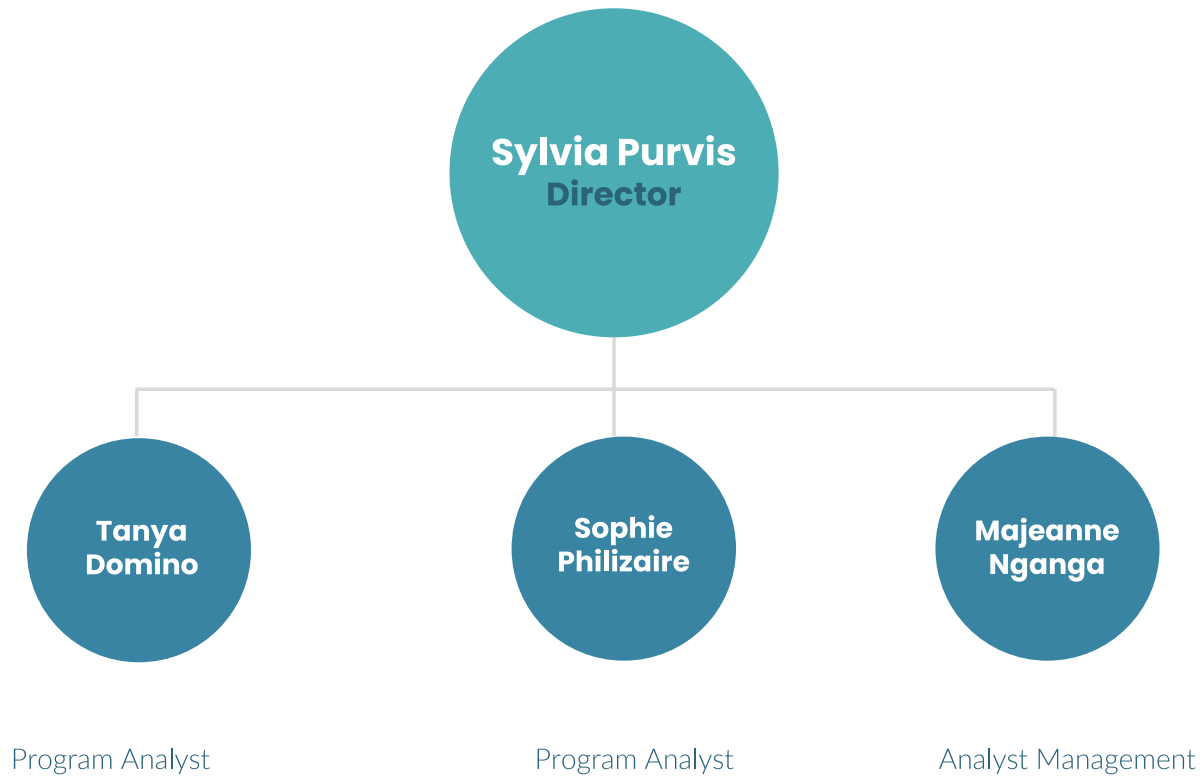
Housing Program Officer, Denver
Homeownership Center (Out
Stationed Denver, CO)

Vincent McClure

Branch Chief, Multifamily, Fort
Worth Asset Management (Out
Stationed, Ft. Worth TX)



FIELD POLICY and MANAGEMENT



FIELD POLICY MANAGEMENT

Critical Function



OFFICE OF FIELD POLICY MANAGEMENT

OFFICE ROLE

FPM serves as the first point of contact for individuals contacting HUD through its various communication systems and highlights the department's overall commitment to embracing high standards, ethics, management, and accountability.

1

Customer Service

2

Disaster Support and Resiliency

FPM implements the agency's efforts related to disaster preparedness, response, and recovery at the regional, state and local level.

FPM engages with a wide range of external partners which includes; Federal, State, and local agencies, non-profit organizations, public/private partners, academic institutions and others.

4

Community Outreach and Partnerships

3

Special Projects

FPM works to advance Secretarial initiatives and HUD's strategic goals. Some of these include; House America, Healthy Homes Partnership, Connect Home, Promise Zones and Reducing Homelessness.



LOUISIANA

Demographics



The jurisdiction of the New Orleans HUD Field Office covers 64 parishes in Louisiana. Louisiana has a land area of 43,193.1 square miles and a water area of 9,168.3 square miles with an estimated population of 4,657,757 as of the 2020 Census. It is the 33rd largest state by area.

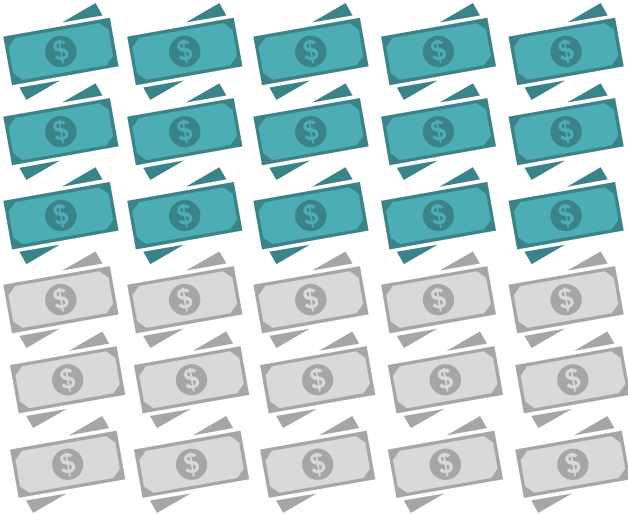


The median household income for Louisiana is \$51,073, lower than the United States median income of \$65,712. The poverty rate in New Orleans' Field Office jurisdiction is 19%, which is 6.7% higher than the poverty rate for the United States at 12.3%.



FUNDING

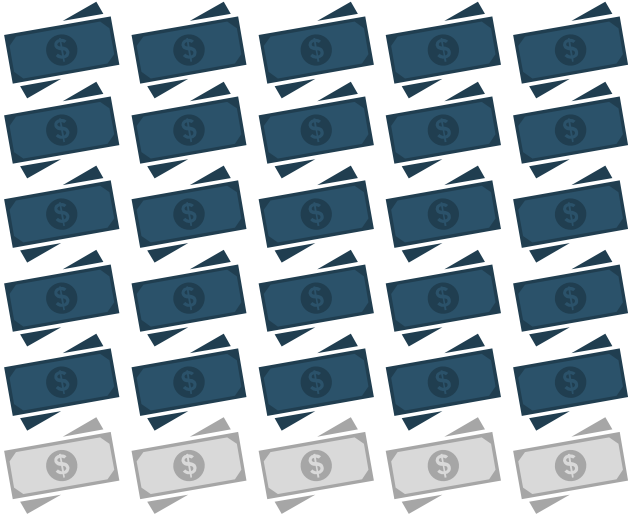
Office of Community Planning and Development (CPD) & Office of Public and Indian Housing (PIH)



\$87.5M

CPD FUNDING FY21 – FY23

OFFICE OF COMMUNITY PLANNING AND DEVELOPMENT FUNDING FY21-FY23	
FISCAL YEAR	AMOUNT
2021	\$25,593,906
2022	\$29,057,672
2023	\$32,898,648
TOTAL Community Planning & Development Funding	\$87,550,226



\$556.7M

PIH Annual Funding

OFFICE OF PUBLIC AND INDIAN HOUSING		
Annual Funding – CY2024	PHA	AUTHORIZED
Housing Choice Voucher	Housing Authority of New Orleans	\$446,416,215
Operating Subsidy	Housing Authority of New Orleans	\$54,901,609
Capital Fund Program	Housing Authority of New Orleans	\$55,436,102
TOTAL		\$556,753,926

