

1. Summary of PRI

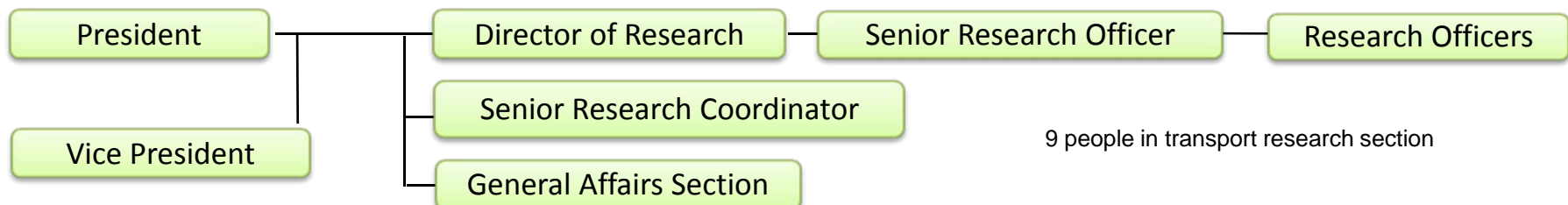
PRI was established under the Ministry of Land, Infrastructure, Transport and Tourism (MLIT), as a think tank of MLIT.

① PRI's Mission

- Support MLIT planning and decision-making processes
(Functions)
 - ✓ Analysis of socio-economic trends and visions for the future
 - ✓ Analysis of policy impacts
 - ✓ Study of new managerial approaches for the public-sector both in Japan and overseas
- Serve as a forum for interactive policy studies and the dissemination of research findings

Facilitate effective policy formation in the land, infrastructure, transport and tourism area

② PRI Organizational Structure



2. PRI Publications and Activities

➤ Research Report

PRI research reports are published in *Policy Research into Land, Infrastructure, Transport and Tourism*.

Now it is published to No.110.

➤ PRI Review

PRI's quarterly journal *PRI Review* contains study and survey reports of policy, legal and institutional issues.

➤ Presentation of Research in Land, Infrastructure, Transport and Tourism

PRI holds an annual presentation session to disseminate its researches and studies to MLIT main body and other research organizations.

➤ Study workshop

PRI organizes regular study workshop for the ministry staffs, where academics and business experts are invited as a lecturer



Policy Research into Land, Infrastructure, Transport and Tourism



PRI Review

3. Research Programme /2012 fiscal year (finished)

Building of Safe and Secure Society

Logistics system at the time of disaster (2012)

- Learn from experience in Tohoku earthquake last year, it aims to make a manual for gathering information of relief goods delivery at the time of disaster.

Challenges towards Decreasing Population and Aging Society

Accessibility to Public Transportation (2012)

- It aims to develop a indicator for accessibility of the people to public transport for their daily life

Other Important Issues

Expansion of Japanese Logistics Companies to China (2012)

- It aims to investigate a situation of business expansion by Japanese logistics companies in China , as well as figure out current and future logistics business circumstances in China.

Policies Regarding Reduction of CO2 in Transport Sector (2012)

- It aims to investigate multilateral and bilateral emission trading scheme and applicability of these in transportation sector. It also aims to develop a comprehensive assessment framework of policy to reduce CO2, which takes side effect of the policy into account.

Effect of Competition Law Exemption in Airline Alliances (2012)

- It aims to understand an application of competition law to airline alliances, as well as the effect of Competition Law exemption in codesharing contract to Japanese aviation market

4. Research Programme / 2013 fiscal year

Building of Safe and Secure Society

Safety Management System in Transportation Companies (2013)

- It aims to propose more sophisticated safety management system in public transport enterprises and support them, by analyzing the government audit results and collecting good cases

Challenges towards Decreasing Population and Aging Society

Maintenance and Expansion of Public Transport Services (2013)

- It aims to study various approaches which intend to keep/expand public transport services in Japan and other countries, and analyze the impacts to Japan.

Other Important Issues

Expansion of Japanese Logistics Companies to ASEAN (2013)

- It aims to investigate a situation of business expansion by Japanese logistics companies in ASEAN Countries , as well as figure out current and future logistics business circumstances in those countries

Expansion of Exporting Traffic System to overseas and Inbound Tourism (2013)

- It aims to study how to export air-traffic control system and inbound tourism, by analyzing the other countries' national policy and collecting information about the other countries' companies.

Impact of LCC(2013)

- It aims to analyze the Impact of LCC on Japanese transport market, and collect and study good cases of local economic development by introducing LCC.

Measure against Influenza(2013)

- It aims to investigate how to continue transport services and preventia spread of Influenza at the time of an epidemic of Influenza.

5. Cooperation of PRI and JTRC

- PRI's contribution to research of JTRC
 - Participate in JTRC project with our researches pushing forward
 - Send experts to Roundtables
- Feedback of JTRC's research to Japan
 - Translate JTRC's researches into Japanese to disseminate them to people concerned in Japan.

“Trends in the Transport Sector 2012” Japanese Edition (published in June 2013)

- Introduce JTRC's researches discussed at Roundtables in PRI's study meetings.

- Long-run Trends in Travel Demand introduced by Prof. Hyodo
- Expanding Airport Capacity under Constraints in Large Urban Areas by Mr. Yamaguchi
- Valuing Convenience in Public Transport by Prof. Kato