



国土交通省

Ministry of Land, Infrastructure, Transport and Tourism

Disaster Prevention Portal

Disaster Prevention Portal Site for Individuals to Practice "Disaster Management and Mitigation to Protect Lives and Livelihoods"



303 Disaster Prevention Sites in 1 Place! Easy Access!

※154 Multilingual Sites (as of April 2024)

Useful Everyday Knowledge

- Conceivable Damage
- Protecting Yourself
- Route Info
- What We're Doing

Useful Information for Your Travel

- Tourism Information
- Route Info



Useful Information During a Disaster

- Damage Status
- Weather Status
- Evacuation Info
- Traffic and Logistics Info
- Disaster Victim Assistance Info
- Safety Status
- Lifeline Information
- Region Information

Disaster Prevention Portal

Search

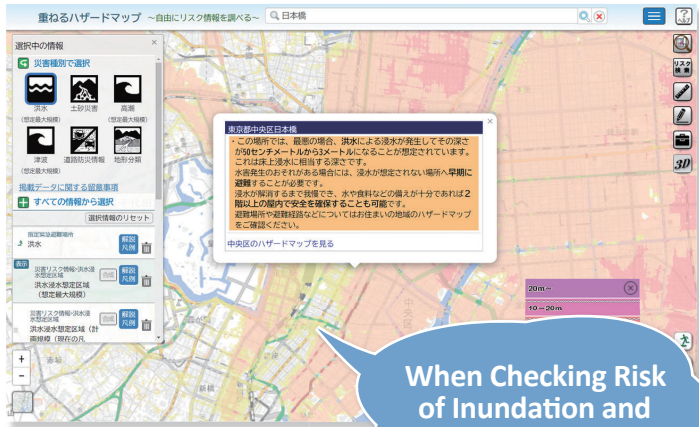




Conceivable Damage

View info on conceivable damage, hazard maps and more pertaining to natural disasters that could occur.

Example Link ▶▶ “MLIT Hazard Map Portal Site (only in Japanese)”



When Checking Risk of Inundation and Other Damage.

Access here! Useful Everyday Knowledge > Conceivable Damage > MLIT Hazard Map Portal Site



What We're Doing

View info on what the MLIT, etc. are doing for disaster response.

Example Link ▶▶ “TEC-Force (Technical Emergency Control Force)”



What is the Technical Emergency Control Force (TEC-FORCE)?

TEC-Force's mission is to understand what assistance disaster-struck local governments need, prevent secondary disasters and facilitate rapid emergency recovery. To that end, TEC-Force conducts damage assessments, emergency response with heavy machinery, provides technical advice and carries out other operations.

Access here! Useful Everyday Knowledge > What We're Doing > TEC-Force (Technical Emergency Control Force)



Protecting Yourself

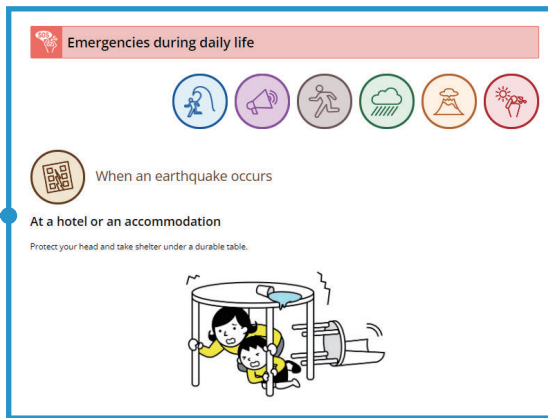
Learn the basics about disasters and view information on protecting yourself in an emergency.

Example Link ▶▶ “Safety tips for travelers”



Access here! Useful Everyday Knowledge > Protecting Yourself > Safety Tips for Travelers

Provides ways foreign tourists can protect themselves in a disaster, along with advisories and warnings.



Tourism Information

See tourism information and information on free Wi-Fi services and lodging facilities.



Route Info

View route maps for buses and railways.

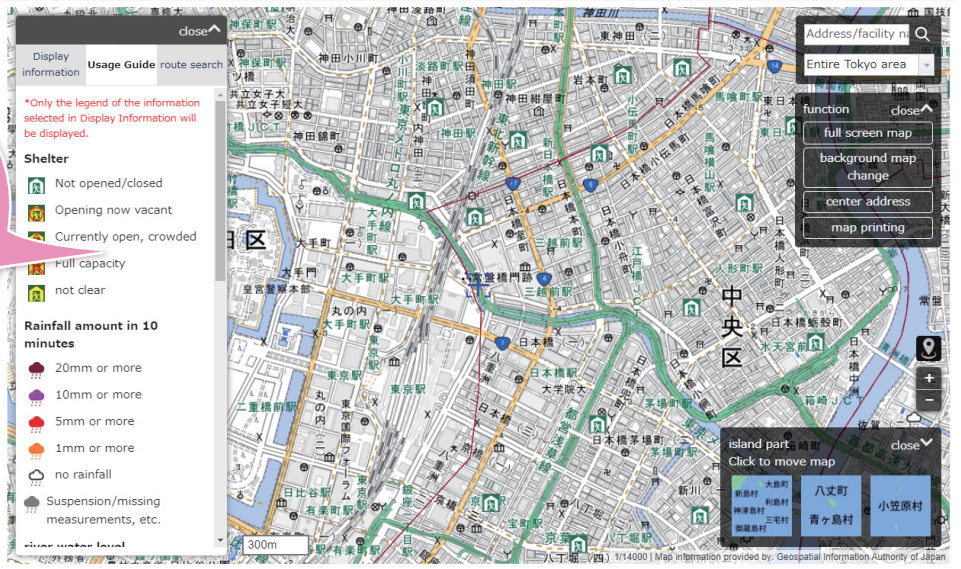


Evacuation Info

Search for evacuation shelters and other disaster management facilities.

Example Link ▶▶▶ ["Tokyo Metropolitan Disaster Prevention Map"](#)

Disaster/disaster prevention map [Click here for press releases, etc. on the Tokyo Metropolitan Disaster Prevention Homepage.](#)



Search for evacuation shelters, emergency water supply station, medical institutions and other disaster management facilities, as well as return-home assistance stations available in disasters (convenience stores, gas stations, etc.).

[Access here!](#) Useful Information During a Disaster > Evacuation Info > Tokyo Metropolitan Disaster Prevention Map



Damage Status

View real-time reports and other resources to quickly learn the state of damage in the wake of a disaster.



Weather Status

View info on weather conditions such as typhoons, along with rainfall, river levels and more from the MLIT, etc.



Traffic and Logistics Info

View info on road closures and other road news, rail service and flight status, and shipping status of logistics companies.



Disaster Victim Assistance Info

View basic info on shelters and disaster management centers, government disaster management info, disaster management maps where you can search for disaster management facilities, multilingual livelihood information, and more.



Safety Status

Use an emergency messaging service and a safety status search service to check whether the people you know are safe.



Lifeline Information

Find updated information on lifeline services (electricity, water, gas, telecommunications).

Useful Information During a Disaster



Region Information

View info on regions provided by regional development bureaus, district transport bureaus, prefectures, and through X.

Portal Site's Key Features

Point 

Multilingual Access※

The portal site is available in English, Chinese (Simplified & Traditional), Korean, Thai, Vietnamese, and Portuguese to allow foreign nationals to find websites they are looking for.



※Expanded Access to Come

Point 

Centralized Info on a Multilingual Page

The collection of multilingual sites is conveniently presented in categories by topic. (Available languages vary by site.)

Example Link ▶▶ “Safety tips for travelers”

Website designed for foreign travelers to confirm scenario-based responses in the event of a natural disaster or other emergencies



Available in English, Chinese (simplified and traditional) and Korean.

Point 

Smartphone Compatibility

The layout is accessible for smartphones and tablets, too.



Point 

Designed for All Kinds of Disasters

Information on earthquake and tsunami disaster, wind and flood disaster, volcanic disaster, and snow disaster!



Earthquake and Tsunami Disaster



Wind and Flood Disaster



Volcanic Disaster



Snow Disaster

How to Access the Portal Site

To access from the MLIT top page

⇒ Access the MLIT top page and find the link in the link banner.

“ MLIT Top page ”



Access here!  [URL] <https://www.mlit.go.jp/>

To access directly

⇒ Enter the URL manually or use a search engine.

Access here!  [URL] <https://www.mlit.go.jp/river/bousai/olympic/en/index.html>

Disaster Prevention Portal

Search



“Disaster Prevention Portal”

