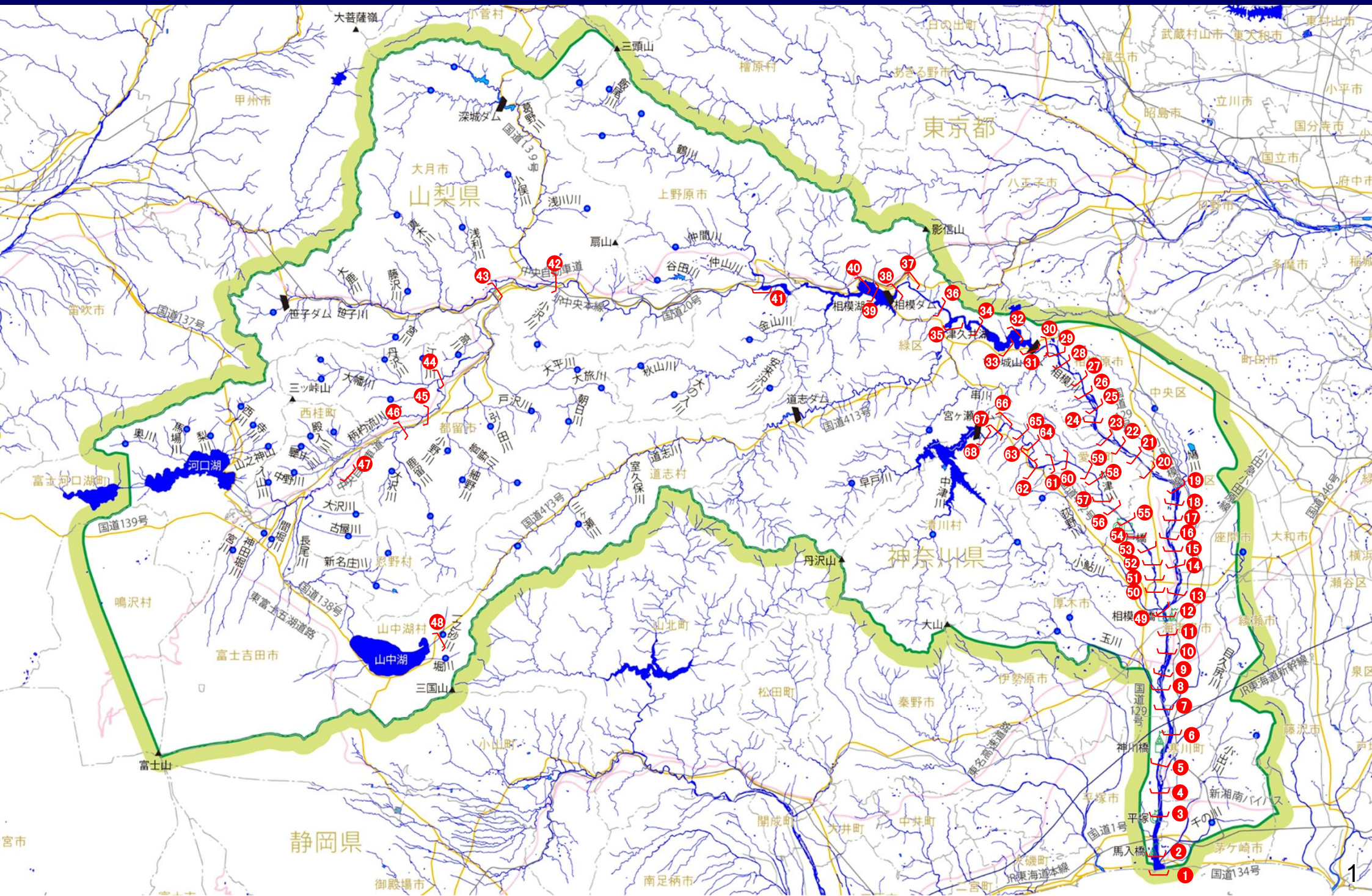


相模川水系 管内図・流域図

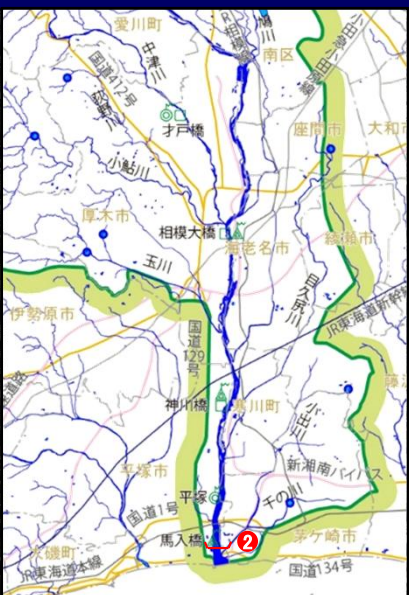
令和 7 年 1 2 月 1 7 日

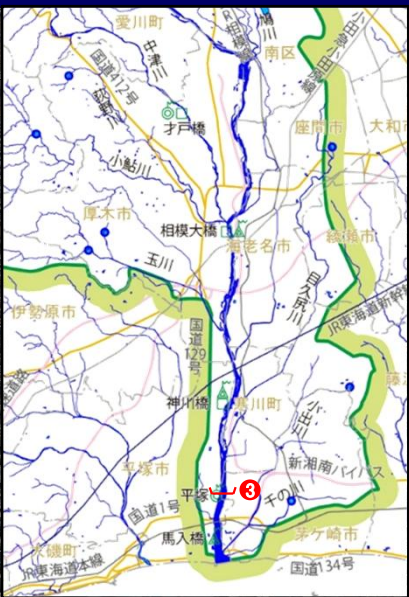
国土交通省 水管理・国土保全局



相模川 管内図・流域図
(令和7年1月撮影)



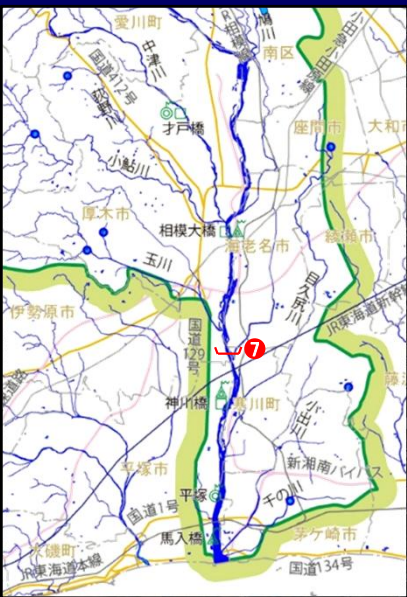


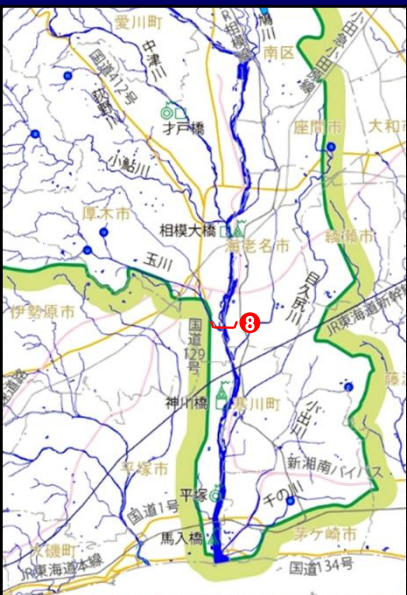




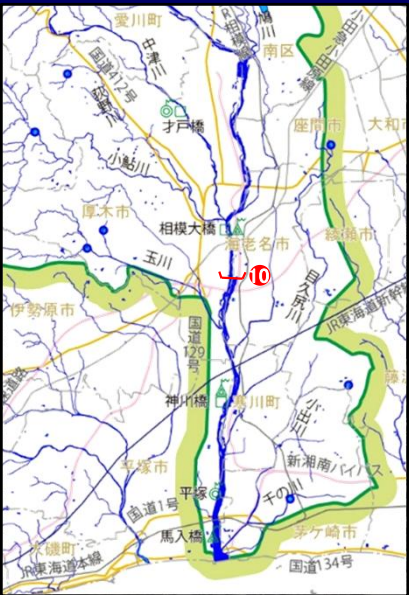


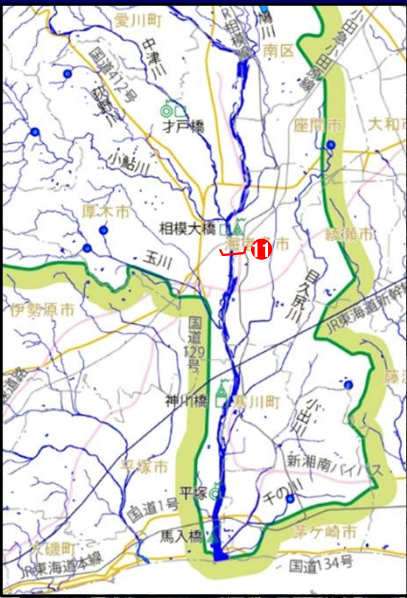






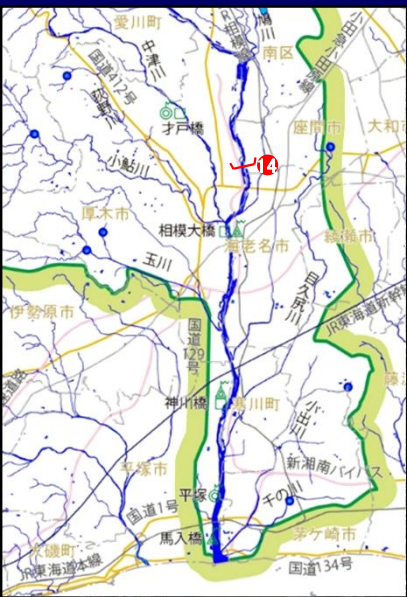


























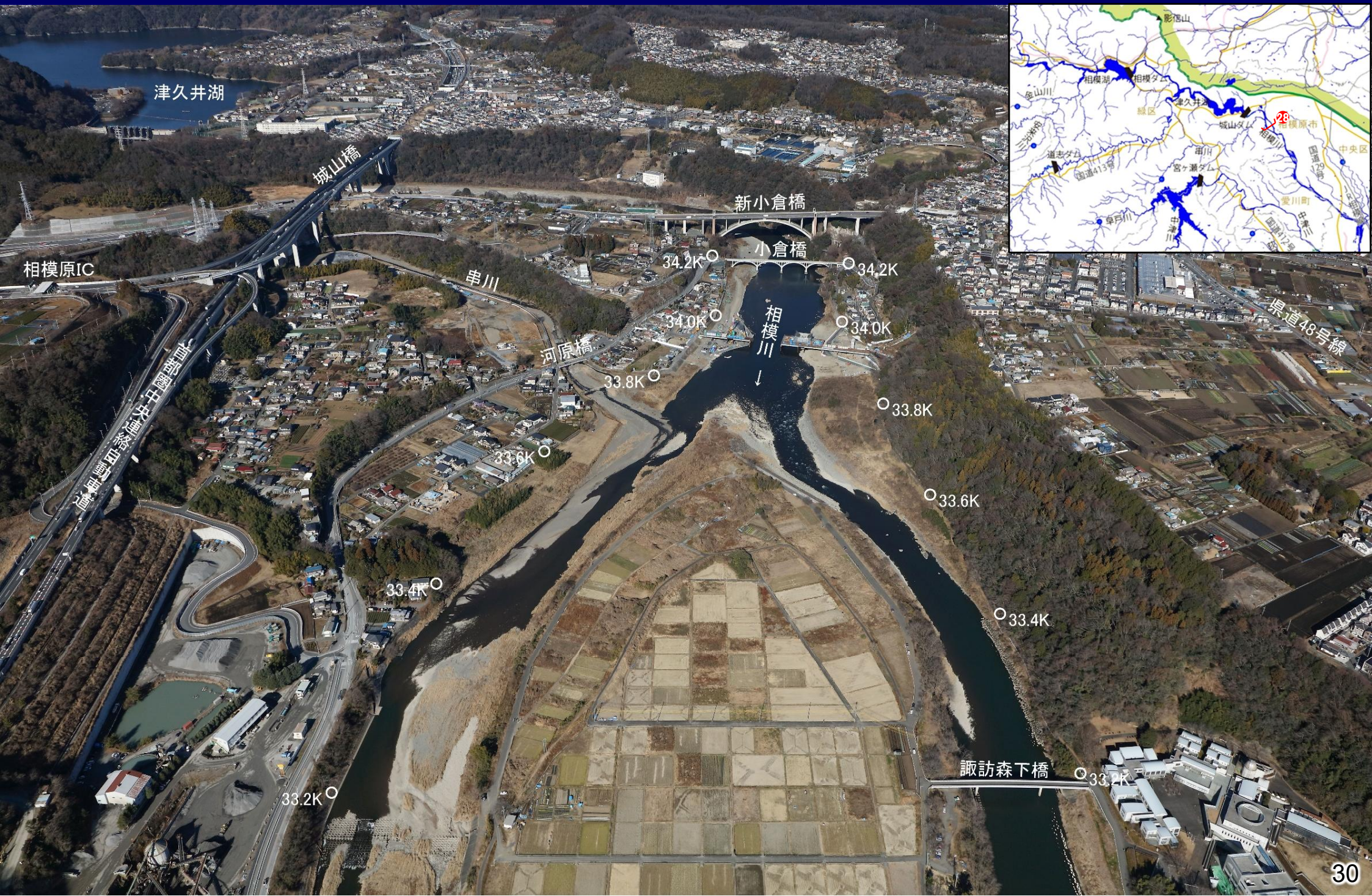


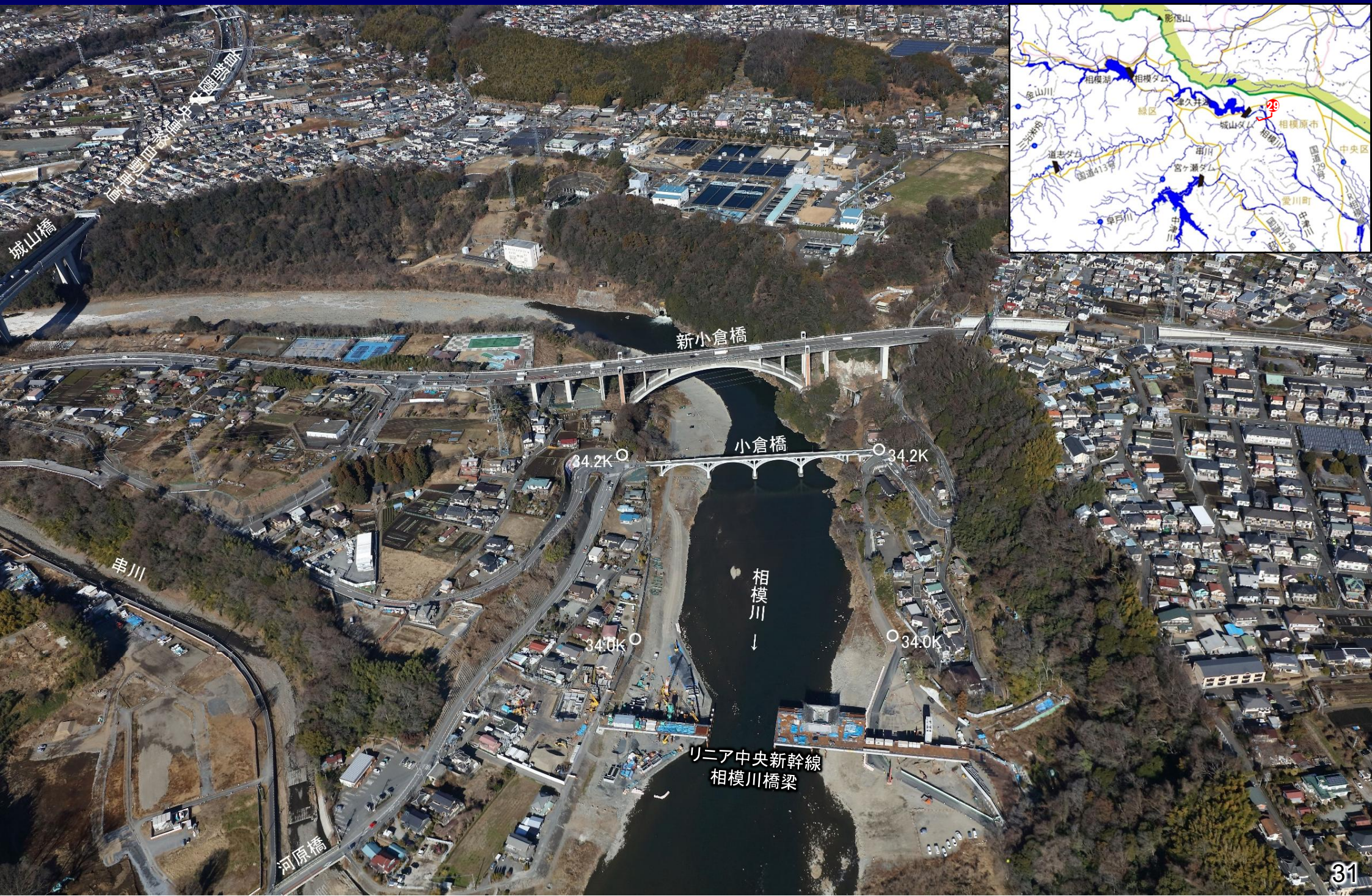










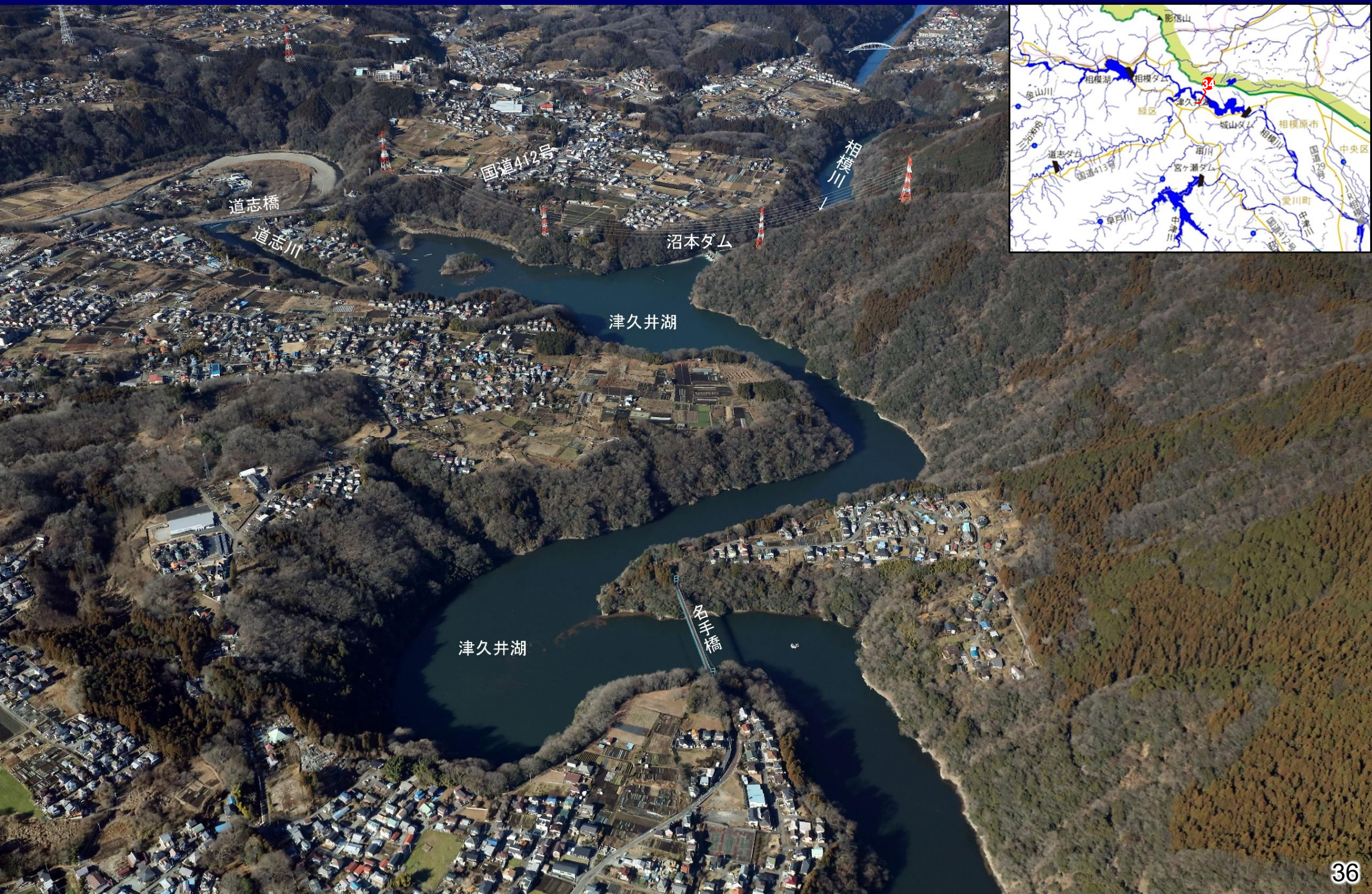


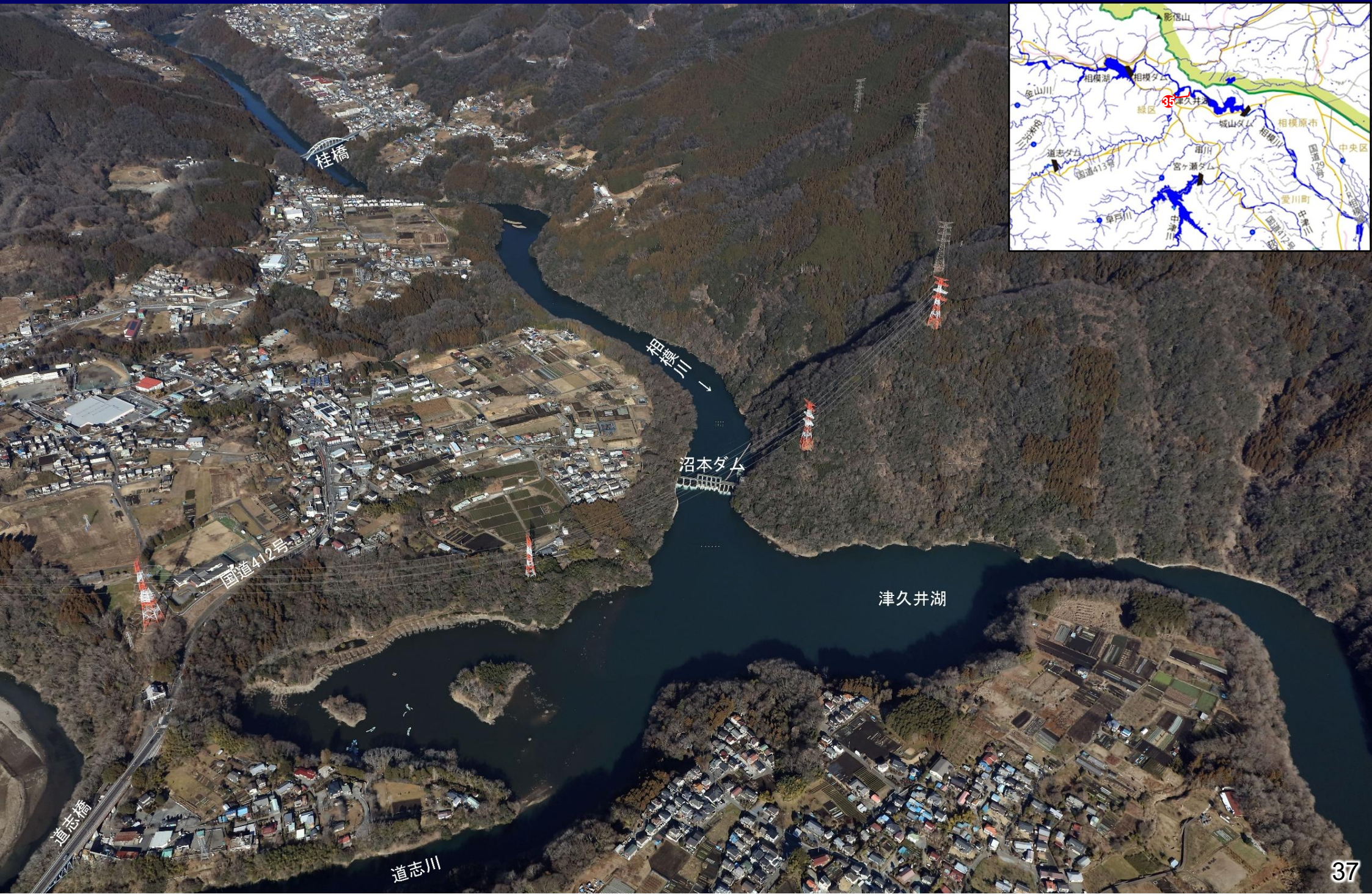


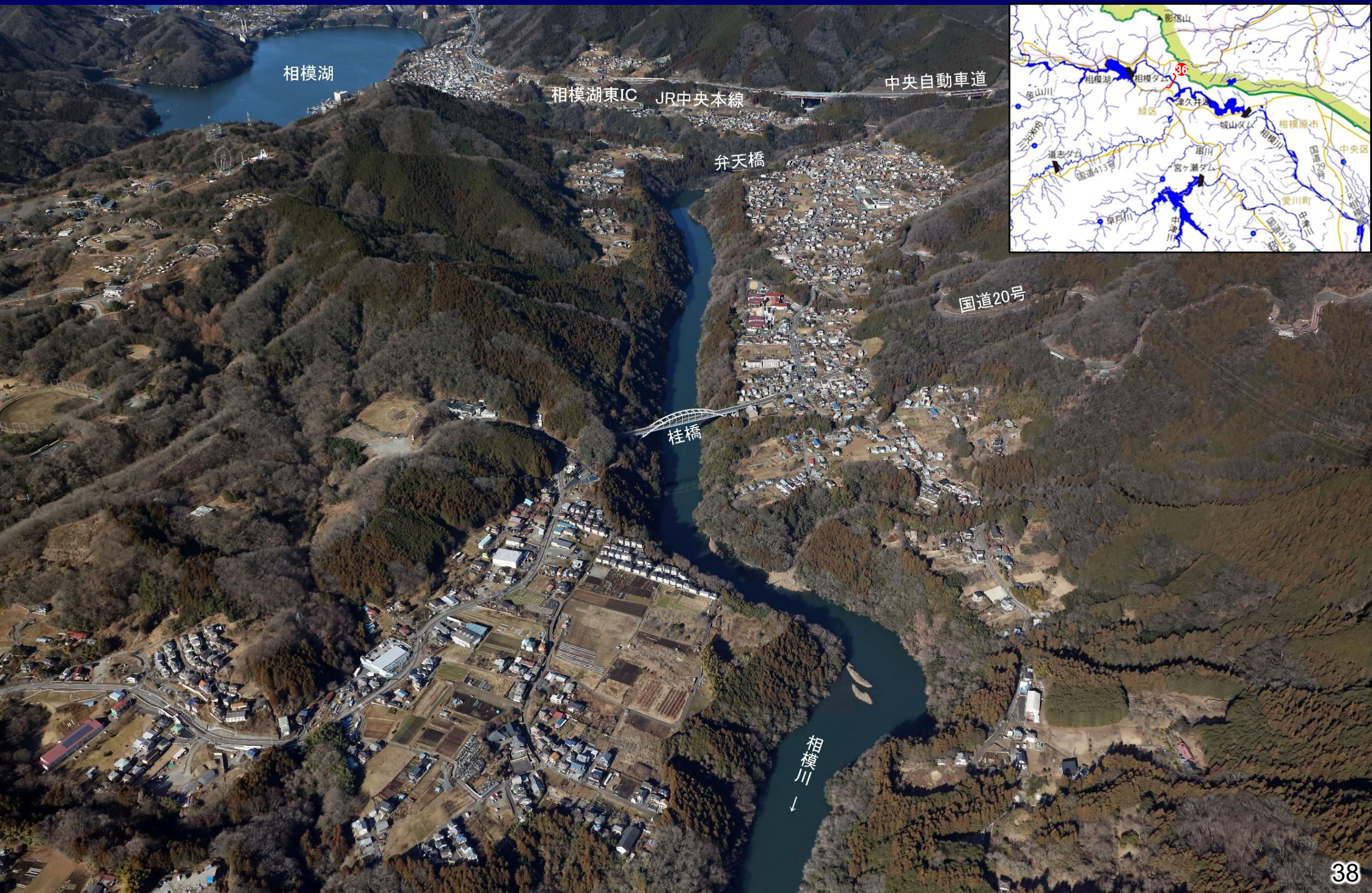


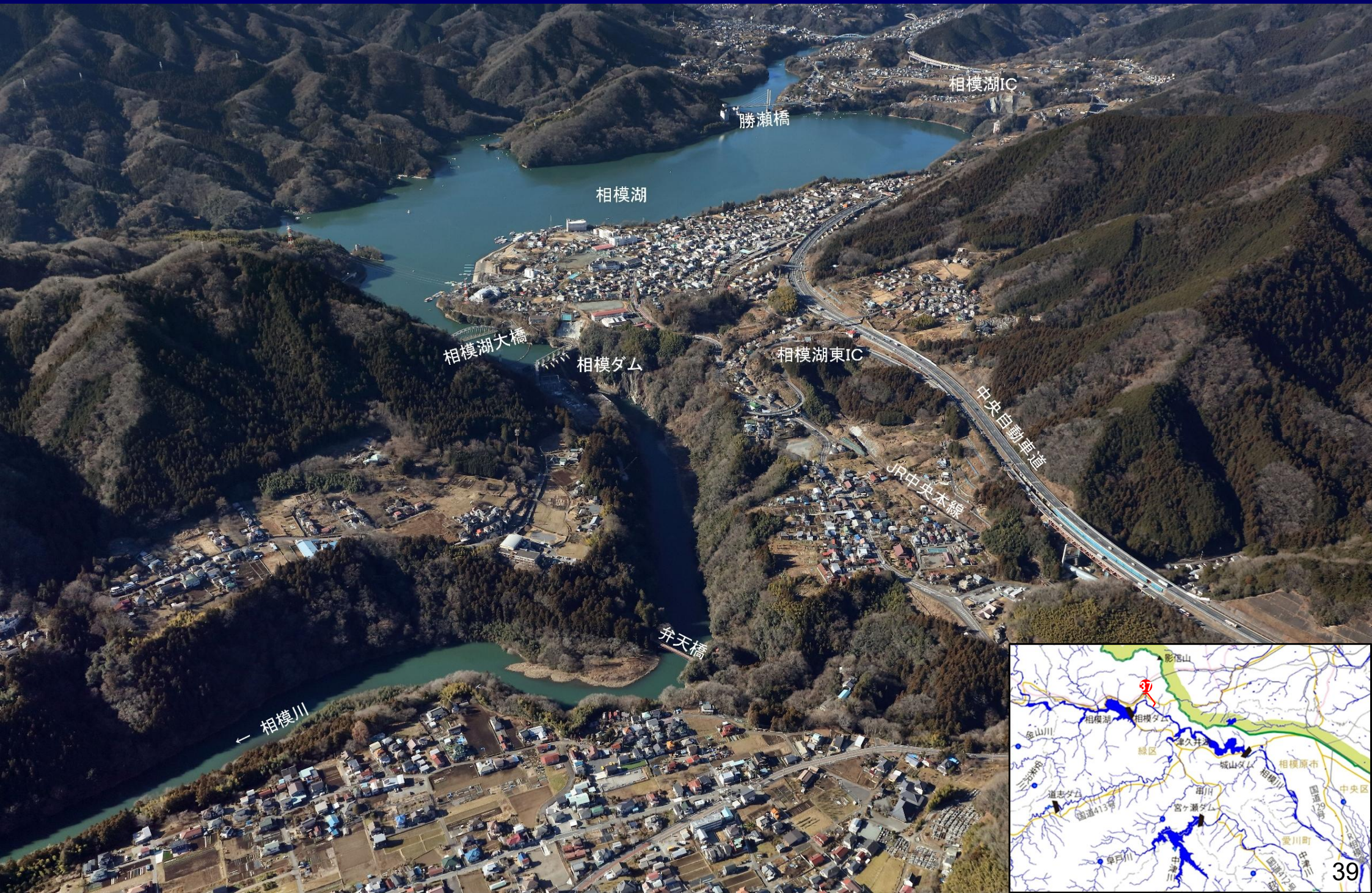










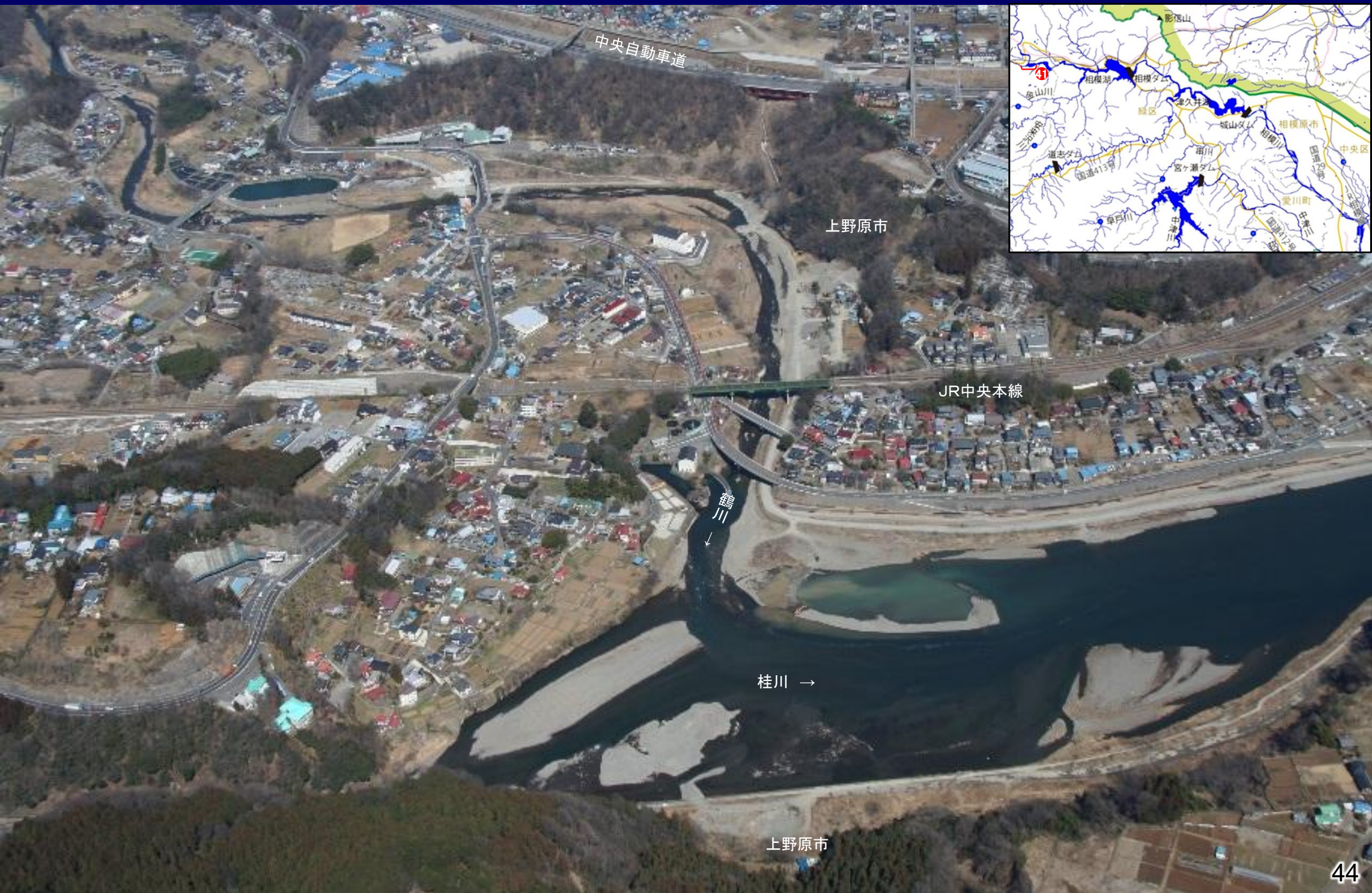








桂川
(平成 1 7 年 1 2 月撮影)





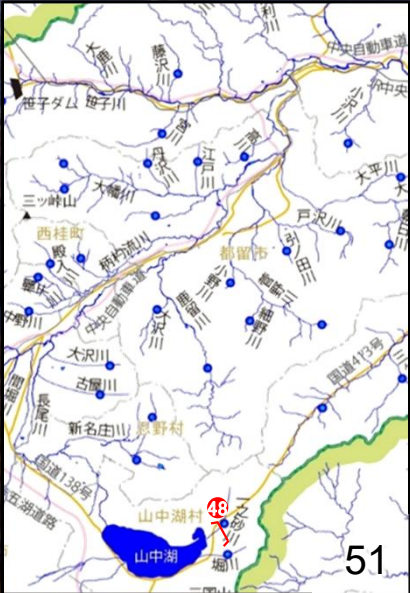
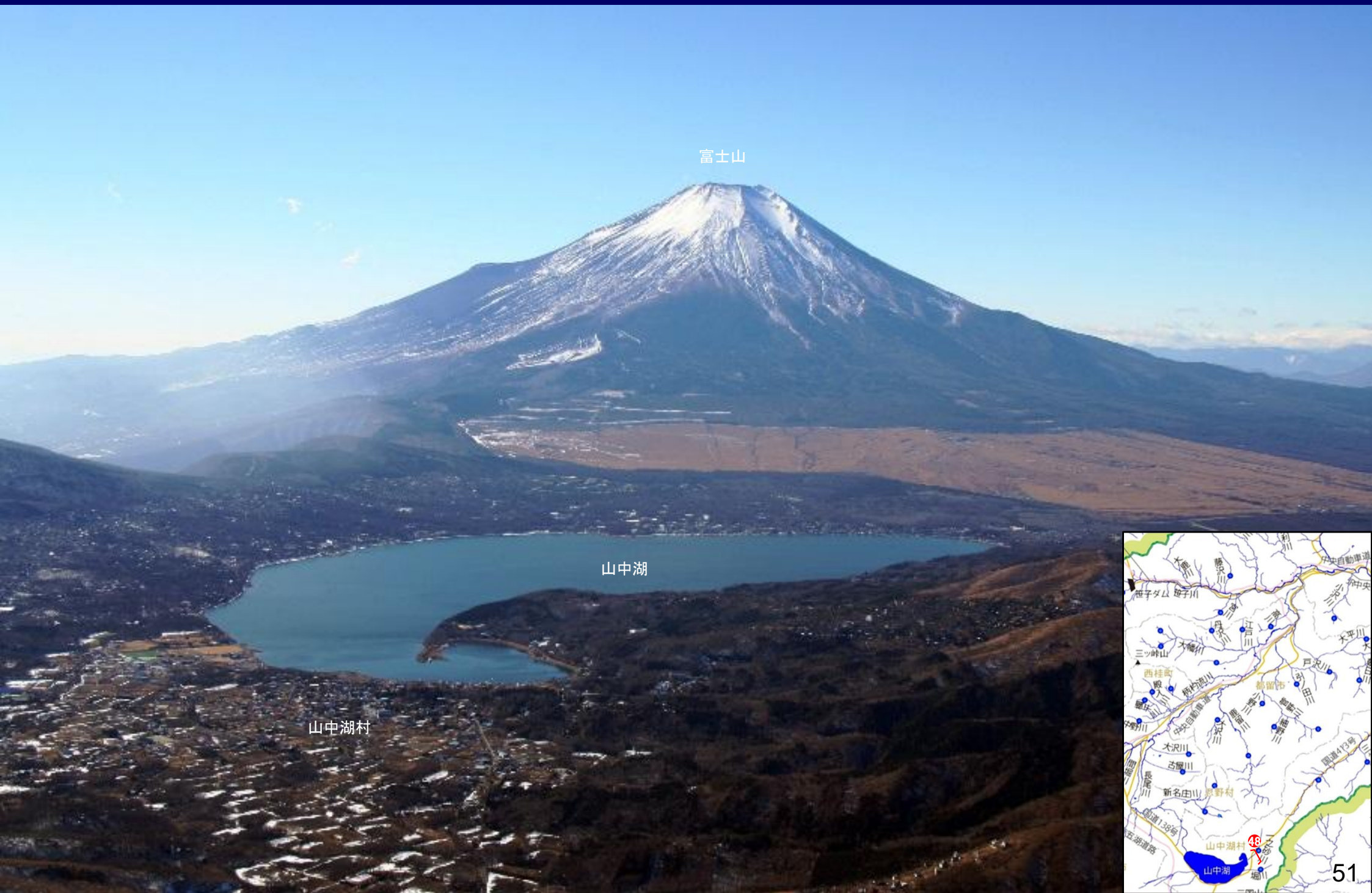






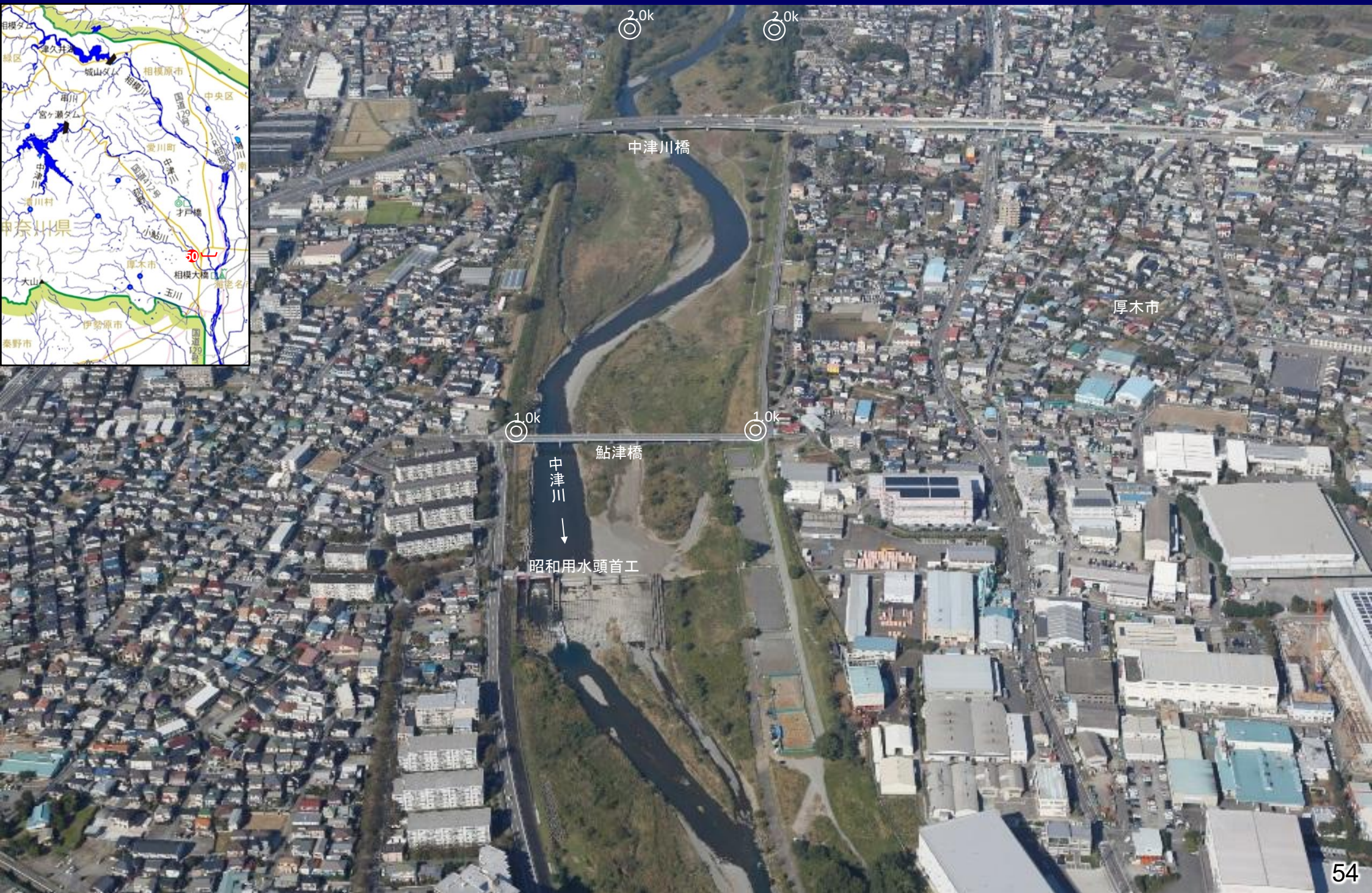






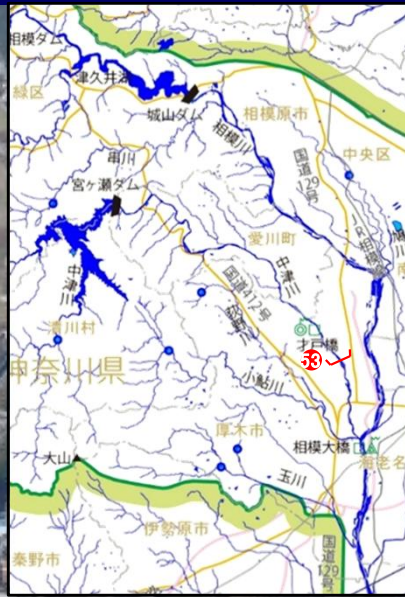
中津川
(平成26年10月撮影)



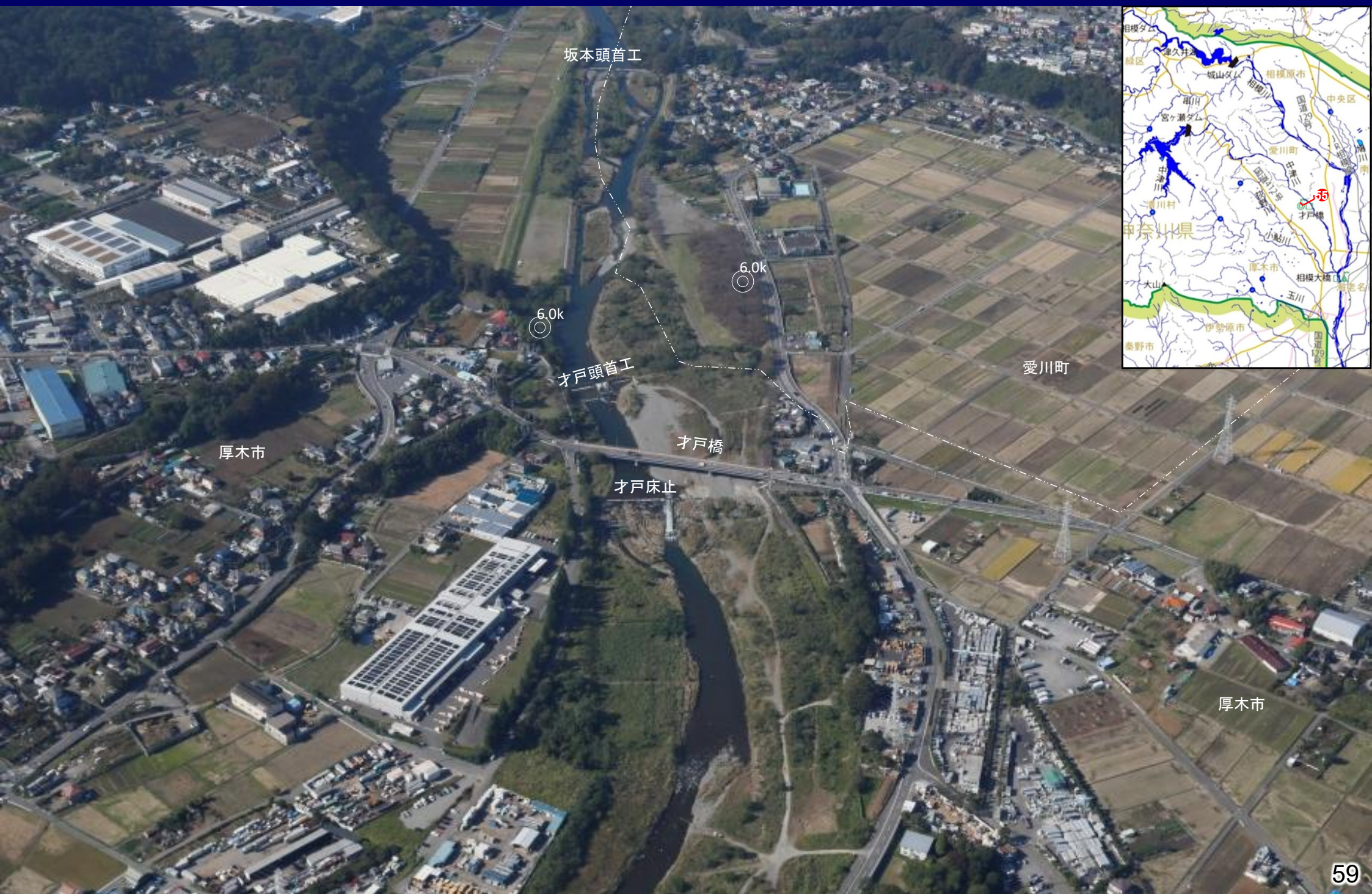




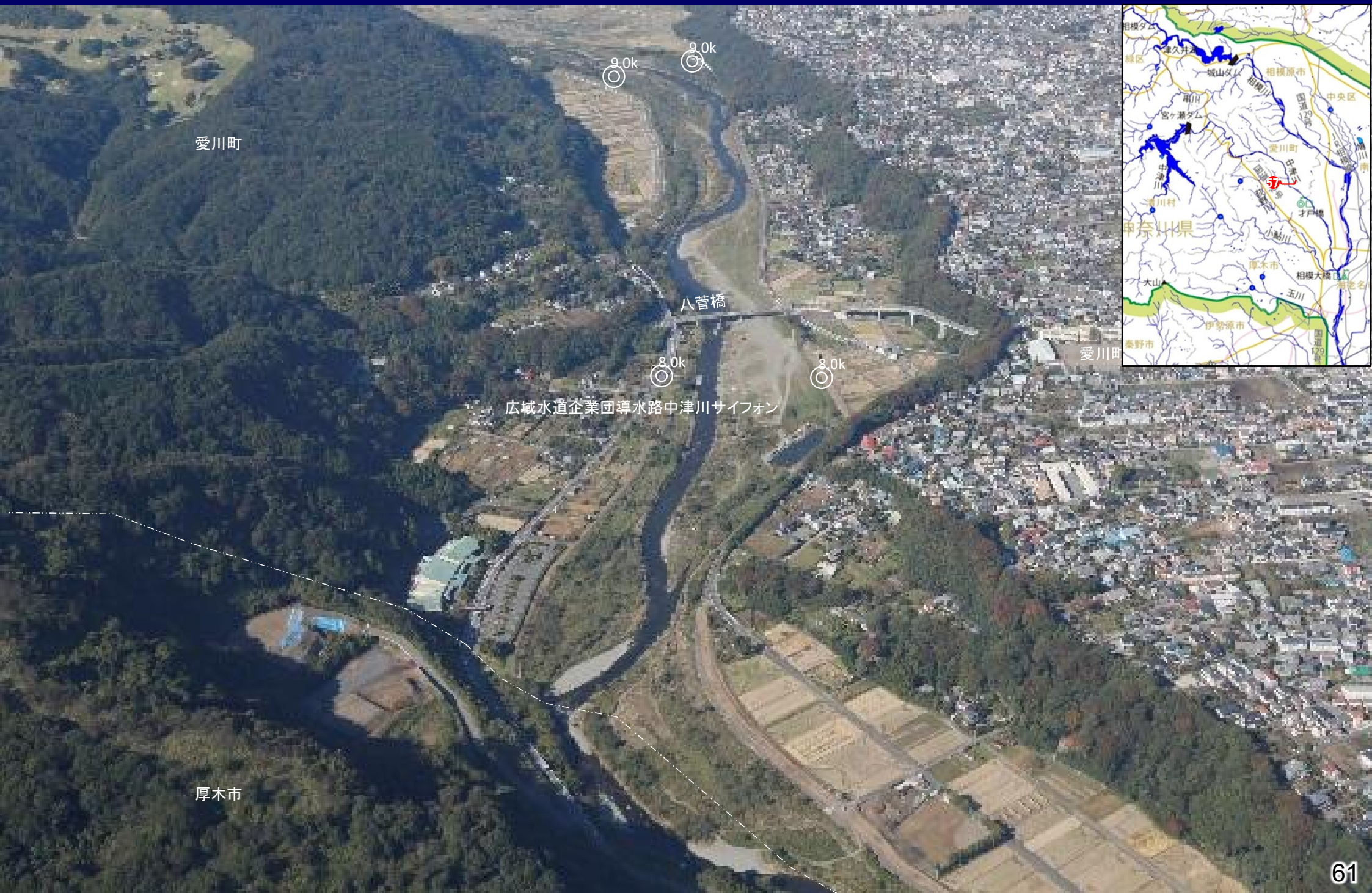
















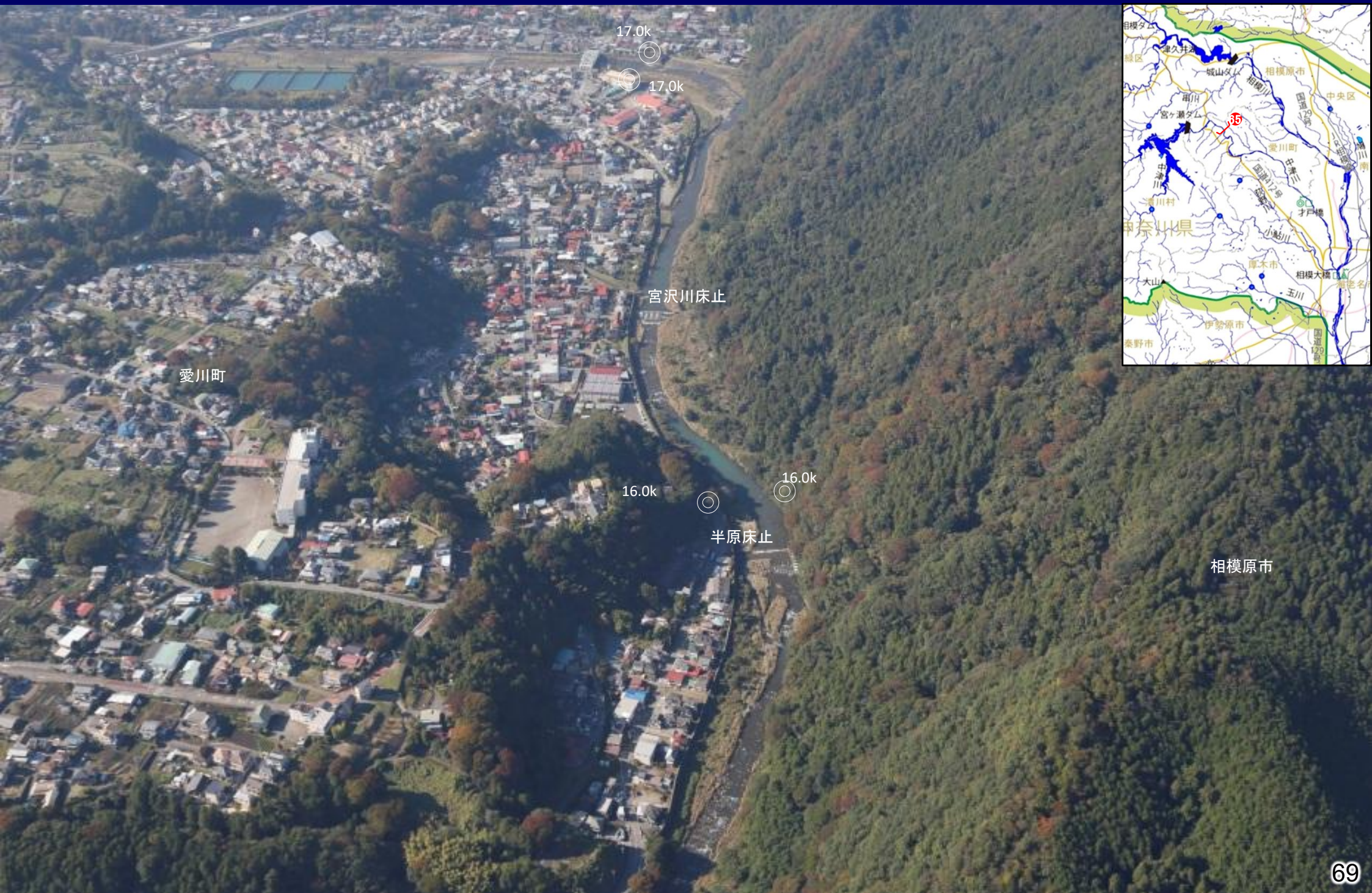














愛川町





愛川町

石小屋ダム

愛川町

