

NATIONAL CYCLE ROUTE



The National Cycle Route is designated by the national government as a cycling route whose attractiveness, riding environment for bicycles, and environment for accepting cyclists, are at a high level.

Initiatives are ongoing at each route to create new tourism value and enhance local attractiveness by utilizing cycle tourism.



1 Tokapuchi400 (Hokkaido)



2 Tsukuba-Kasumigaura Ring Ring Road (Ibaraki Prefecture)



3 Pacific Cycling Road (Chiba, Kanagawa, Shizuoka, Aichi, Mie, and Wakayama Prefectures)



4 Toyama Bay Cycling Route (Toyama Prefecture)



5 BIWAICHI (Shiga Prefecture)



6 SHIMANAMI KAIDO Cycling Road (Hiroshima Prefecture, Ehime Prefecture)





NATIONAL CYCLE ROUTE (NCR) System

The system is designed to designate routes that meet certain standards as "National Cycle Route (NCR)" in order to create new tourism value in Japan and to revitalize regions by promoting cycle tourism that takes advantage of the region's unique tourism resources.

Currently, 6 routes are designated throughout Japan, with a new designation every 3 to 5 years.



NCR Designation Requirements

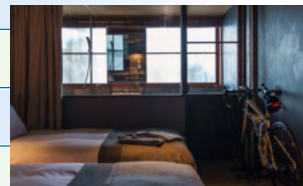
View Points	Requirements
1. Route Configuration	<p>Attractive and safe route that promotes cycle tourism</p> <p>>> The route is approximately 100 km or longer (excluding islands), etc.</p>
2. Road Infrastructure	<p>The environment is safe and comfortable for everyone to ride bikes</p> <p>>> Bicycle lanes are provided with road surface markings, etc.</p>
	<p>The environment where everyone can ride safely and without hesitation</p> <p>>> Road surface markings and signage for routes, etc., shall be provided.</p>
3. Facilities for Cyclists	<p>Gateways are in place to accommodate diverse modes of transportation</p> <p>>> Bicycle rental and changing areas at train stations, etc.</p>
	<p>Equipped with an environment where cyclists can take a break at any time</p> <p>>> Bicycle stations are provided approximately every 20km along the route, etc.</p>
	<p>Equipped with the ability to transport bicycles along the route.</p>
	<p>Equipped with a safe environment for cyclists to stay</p> <p>>> Accommodations for cyclists are available approximately every 60km, etc.</p>
	<p>An environment where cyclists can enjoy local attractions and contribute to the development of the community</p>
4. Information	<p>Equipped to handle bicycle problems</p>
	<p>An environment where support is available in case of emergency</p> <p>>> Ambulances can reach the site approximately every 2 km, etc.</p>
5. Information	<p>Information is readily available to everyone, everywhere</p> <p>>> Information is provided in at least 2 languages (EN/JP) through web sites, etc.</p>
5. Organization	<p>Public-private partnerships necessary to maintain the cycling environment are established</p>



Road Infrastructure



Facilities for Cyclists (Gateway)



Facilities for Cyclists (Hotel for cyclists)

NCR Designation Procedure

