



WE CREATE BETTER FUTURES

STRATEGY - CONCEPTS - DESIGN

SINCE 1999



WE ARE **EXCEPT INTEGRATED SUSTAINABILITY**

WE ARE A **STRATEGY, CONCEPT AND
DEVELOPMENT AGENCY**

WE ARE SPECIALISTS IN **GREEN TRANSFORMATION**

OUR FOUNDER & DIRECTOR

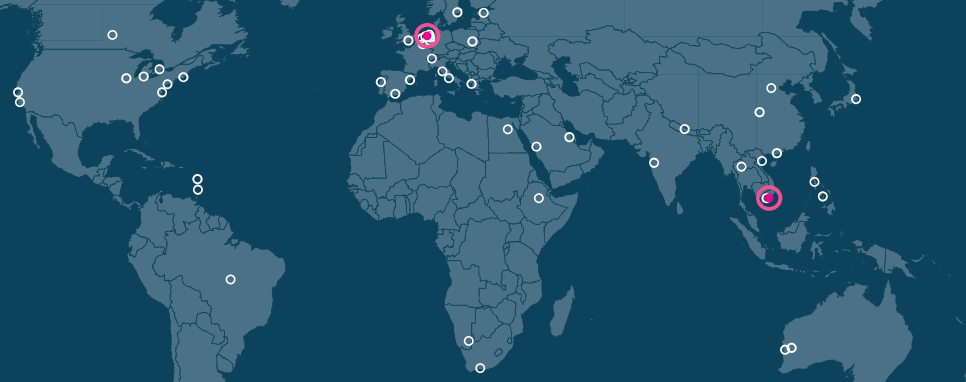


Tom Bosschaert MArch MSc

- › Founded Except at 19 years of age
- › Chairman of Environment committee of World Innovation Change Management Institute (WICMI)
- › Author of the Symbiosis in Development (SiD) systemic sustainability framework
- › Lead consultant for a.o. Heineken, IKEA, Swisslife, Mitsubishi Estate, City of Amsterdam
- › MArch. Architecture & Urban Planning, Yale University
- › MSc. Industrial Design Engineering, Delft University
- › Guest lecturer at universities in Europe and Asia



WE WERE FOUNDED IN **1999**, DEVELOPING **GREEN TRANS-
FORMATION** PROJECTS GLOBALLY, FOR 25+ YEARS



WE WORK **GLOBALLY** ON SEVERAL HUNDRED PROJECTS FROM OFFICES IN THE **NETHERLANDS** AND **VIETNAM**

WHAT IS **GREEN TRANSFORMATION?**



WHAT IS **GREEN TRANSFORMATION?**



CHOSEN BY LEADING ORGANIZATIONS WORLDWIDE



WHAT IS **GREEN TRANSFORMATION?**



HOW TO DO **GREEN TRANSFORMATION?**

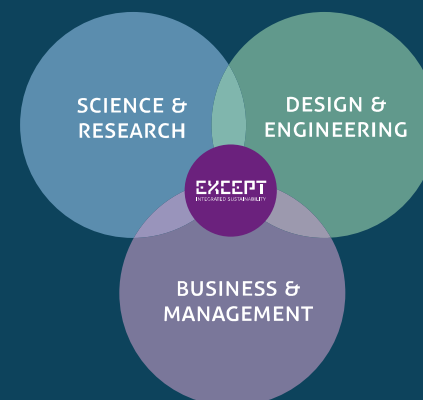
1. ANALYZE LOCATION & CONTEXT
2. DEVELOP STRATEGY & CONCEPT WITH STAKEHOLDERS
3. FINANCIAL ENGINEERING & SYSTEMIC DESIGN
4. IMPLEMENT AND MANAGE



WHAT IS **GREEN TRANSFORMATION?**



GREEN TRANSFORMATION IS A **MULTIDISCIPLINARY EFFORT**



DELIVERING PIONEERING AND INNOVATIVE PROJECTS

URBAN DESIGNS & BUILDINGS



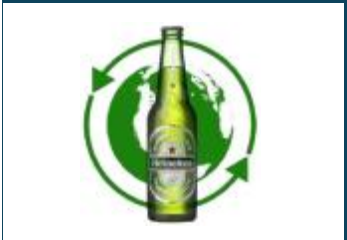
INDUSTRY, FOOD & PRODUCTION



SELF SUSTAINING CITIES & AGRICULTURE



STRATEGY & CIRCULARITY



SUPPLY CHAINS & PRODUCTS



TRAINING & MASTERCLASSES



FREE OPEN SOURCE BOOKS, VIDEO TRAINING, ARTICLES, AND UNIVERSITY TRAINING MATERIALS



THINKSID.ORG

EXCEPT



SYMBIOSIS IN DEVELOPMENT

FRAMEWORK FOR SYSTEMIC GREEN TRANSFORMATION

THEORY - METHOD - PROCESS - TOOLS



EXAMPLE PROJECTS

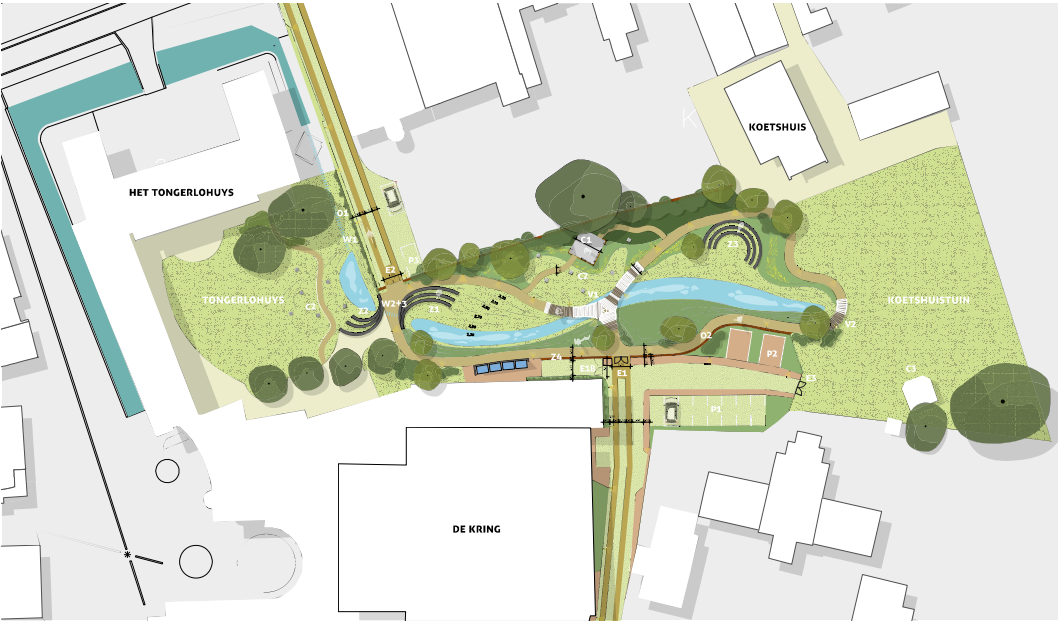


EXCEPT



Climate Adaptive Park Roosendaal
2020-2022

BEFORE
PARKING LOT AND LOADING AREA
MANY CONFLICTING INTERESTS

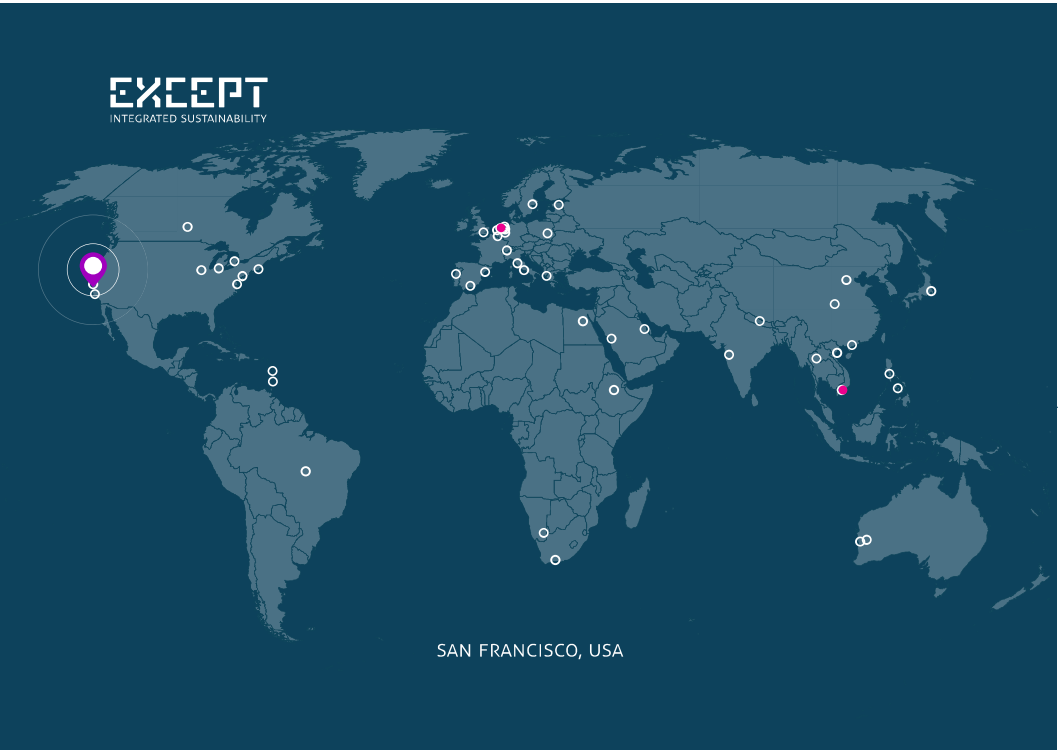




BEFORE

GX

AFTER



BEFORE (UNTIL 2005)





WORLD'S LARGEST ECOSYSTEM ROOFTOP

- 2.2 HECTARES ON 8TH FLOOR
- 600 TREES, 16.000 PLANTS
- STORMWATER RETENTION
- URBAN HEAT ISLAND REDUCTION
- AIR QUALITY IMPROVEMENT
- REAL ESTATE PROPERTY VALUE INCREASE
- GLOBAL VISITOR ATTRACTION



BEFORE



AFTER

GX





BEFORE



COMMUNITY COCREATION & CONSULTATION

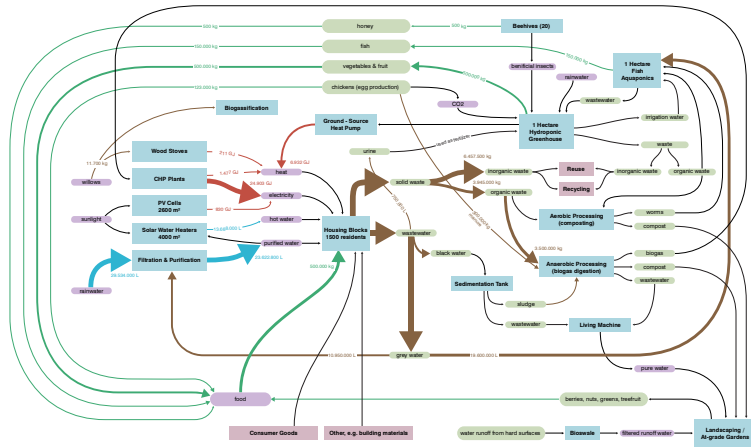


BEFORE

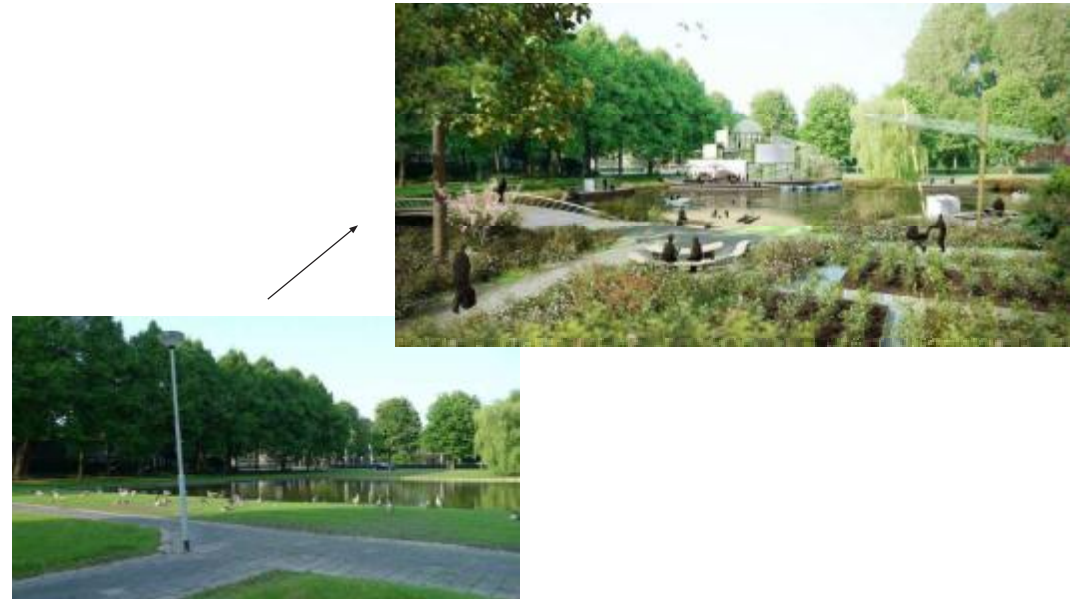
- CRIME
- UNSAFE FEELING & REALITY
- DISCONNECTED COMMUNITY
- STREET WASTE PROBLEMS
- LOW VALUE
- HIGH MAINTENANCE COSTS



GREEN TRANSFORMATION
MASTERPLAN



SYSTEMIC CIRCULAR REDEVELOPMENT PLAN



AFTER



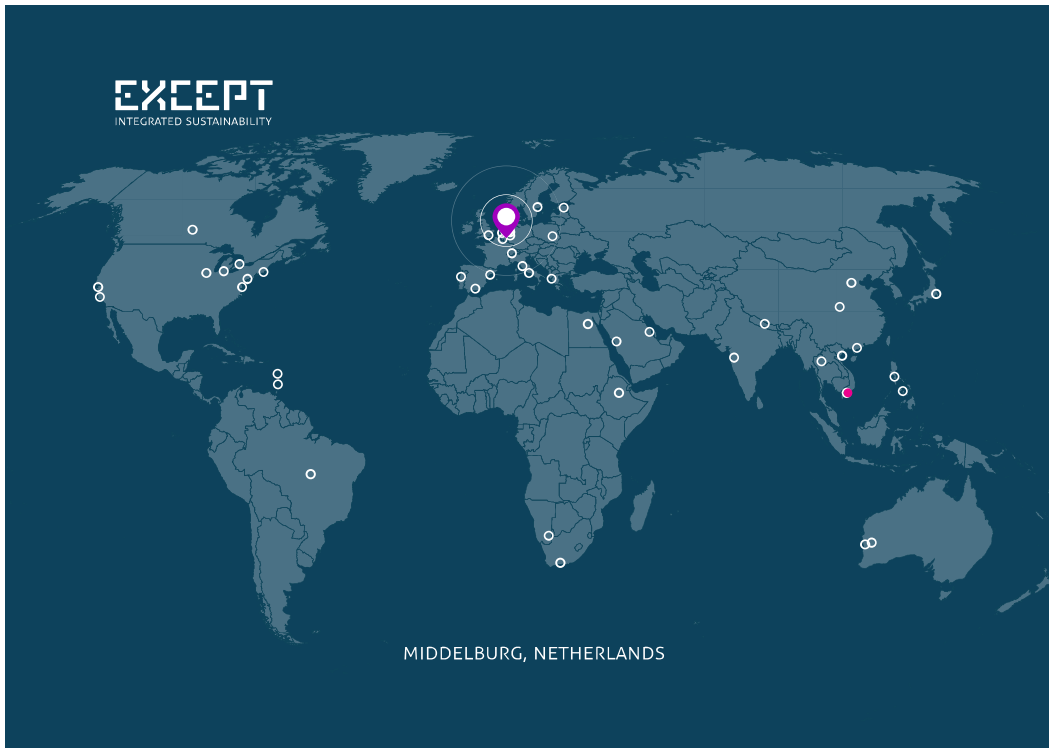
AFTER

RESULTS

- CRIME REDUCED BY 40%
- STREET WASTE REDUCED 70%
- SOCIAL CONNECTIVITY UP 160%
- NEW BUSINESSES & SOCIAL PROJECTS
- LOWER MAINTENANCE COSTS
- HIGHER VALUE

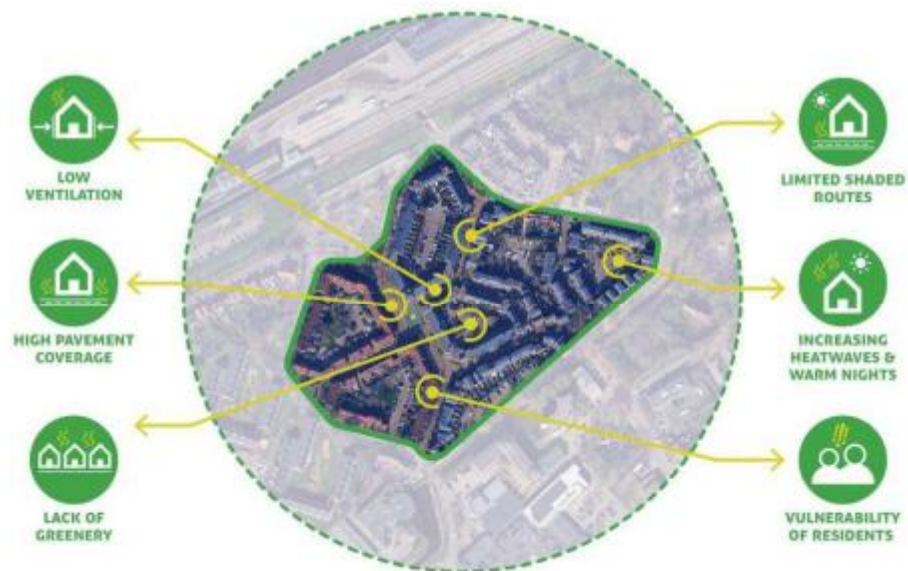


BEFORE
HOUSING NEIGHBORHOOD FROM '70S
1400 INHABITANTS
UNSAFE, UNHAPPY, NOT VALUED, HEAT STRESS



MIDDELBURG, NETHERLANDS





AFTER





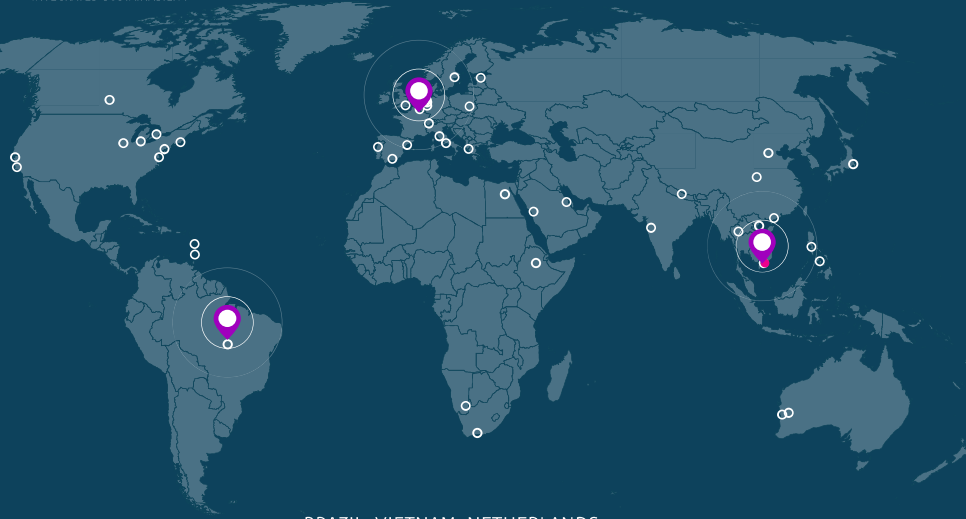
EXCEPT
INTEGRATED SUSTAINABILITY

Middelburg
2010-ongoing

EDELSTENENBUURT

FUTURE OUTLOOK & IMPROVED LIVING ENVIRONMENT





BRAZIL, VIETNAM, NETHERLANDS

Orchid City addresses all these challenges, in one integrated approach.



ORCHID CITY
REINVENTING THE FUTURE OF LIVING



ORCHID CITY

REINVENTING THE FUTURE OF LIVING

Orchid City is the world's first self-sustaining city blueprint.

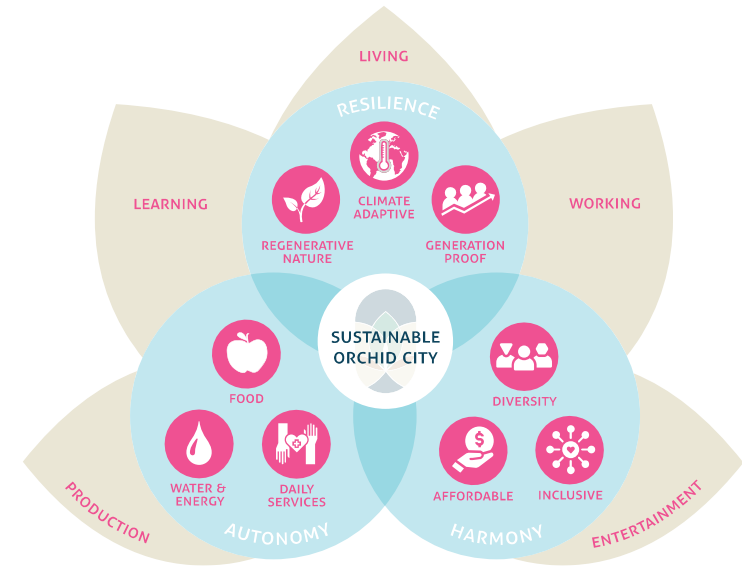
Here, we reinvent how we coexist with nature and with each other.



ORCHID CITY GLOBAL PARTNERSHIPS

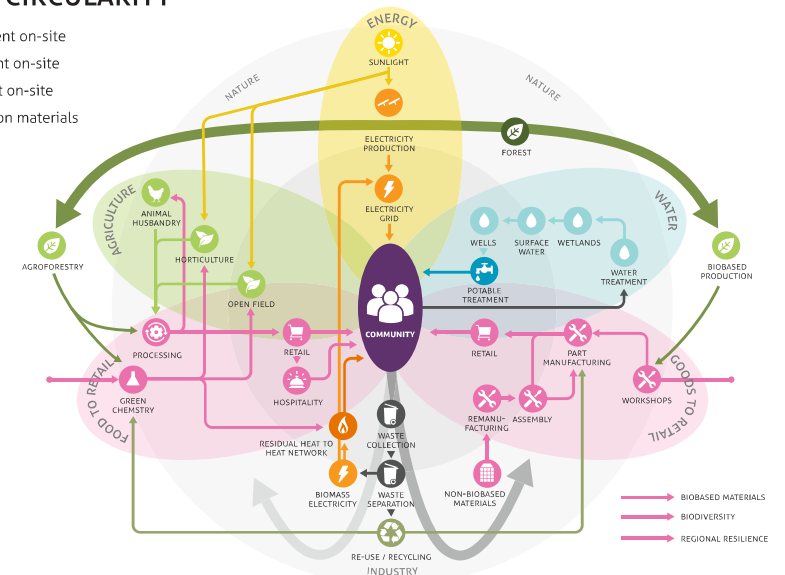


WE BUILD THE PLACE TODAY, WHERE WE WANT TO LIVE 20 YEARS FROM NOW, THAT IS **REALISTIC**, **FEASIBLE**, AND **AFFORDABLE**.

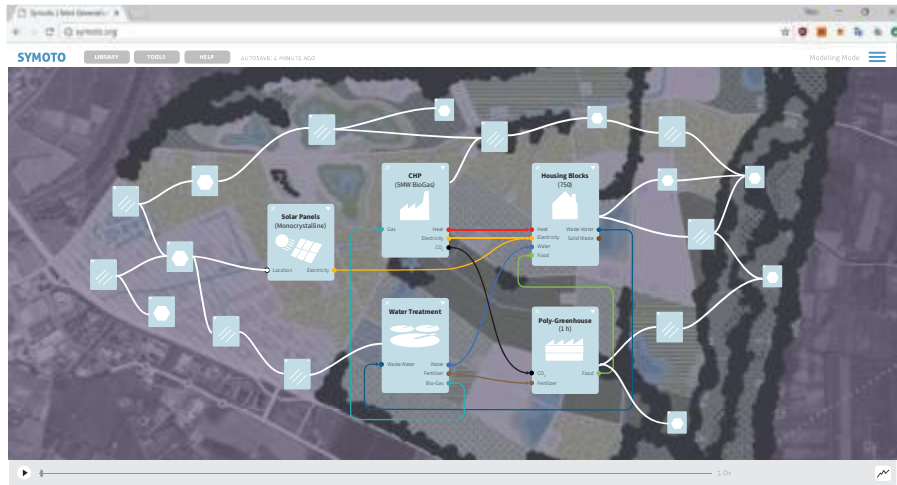


RESOURCE CIRCULARITY

- › Energy self-sufficient on-site
- › Water self-sufficient on-site
- › Food self-sufficient on-site
- › Circular construction materials
- › Circular textiles
- › Circular ceramics
- › Repair workshops



SYMOTO DIGITAL TWIN SIMULATION & MONITORING SOFTWARE



OC VIETNAM
_THE DELTA

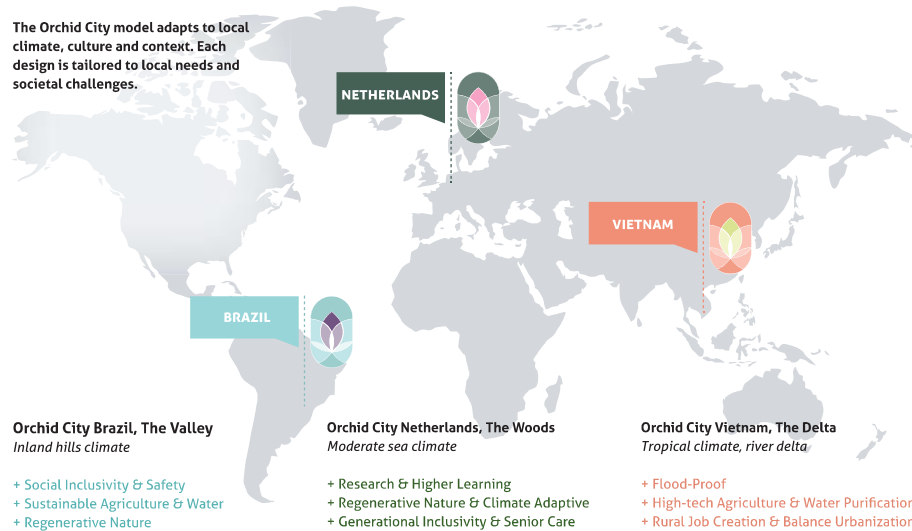


SPECIFIC FEATURES

- › Flood-proofing
- › High-tech agriculture & water purification
- › Fresh locally grown food
- › Rural job creation & De-urbanization

CONTEXT SENSITIVE ADAPTATION

The Orchid City model adapts to local climate, culture and context. Each design is tailored to local needs and societal challenges.



VARIABLE DENSITY



IMPACT OF AN ORCHID CITY OF 50.000 PEOPLE



CLIMATE CHANGE

- › Reduces CO₂ emissions by 133 million tons per year. Saving 140% CO₂ footprint per person.



FOOD PRODUCTION

- › Produces 100% of its food requirement, with 100% organic farms.



JOBS & EDUCATION

- › 30.000 direct jobs created, 100%+ of jobs needed. Part-time, full-time, in different skill levels, and on-site work training.
- › Provides 100% of pre-school, primary, and secondary education.



ORCHID CITY

WWW.ORCHIDCITY.ECO

THANK YOU

EXCEPT
INTEGRATED SUSTAINABILITY

WWW.EXCEPT.ECO

IMPACT OF AN ORCHID CITY OF 50.000 PEOPLE



ECONOMY

- › Contributes € 7 billion to the local economy during development and € 1,2 billion per year during operations for jobs.



LAND & WATER REGENERATION

- › Regenerates 39.000 hectares of land, saving 60%+ of NOx emissions compared to average NL land use.
- › Adds 6.100 ha of wild nature and water.
- › Is 100% water-neutral



BIODIVERSITY

- › Restores beyond 100% of natural biodiversity.
- › Implements localized endangered and rare species development program.